



**Spring 2002
Population
Projections**

2002-2007

**California
Department
of Corrections**

CALIFORNIA DEPARTMENT OF CORRECTIONS

EDWARD ALAMEIDA, Jr.

Director

KATHY M. KINSER

Chief Deputy Director

Support Services

E. A. MITCHELL

Interim Assistant Director

Office of Correctional Planning

ARTHUR CHUNG

Chief (A)

Offender Information Services Branch

PAMELA HOFFMAN

Chief (A)

Estimates and Statistical Analysis Section

JACK LEONARD

Operations Research Specialist III

Population Projections Unit

JACQUI CODER

Lead

Research Analyst II

JUNE DEVOE

Research Analyst II

SHELLEY BUTTLER

Staff Services Analyst

ACKNOWLEDGMENTS

Although the Estimates and Statistical Analysis Section is responsible for the semiannual publication of the Population Projections, others in the Department of Corrections made significant contributions that are greatly appreciated. Among those involved in the projections were (in alphabetical order) the:

- Board of Prison Terms
- Information Systems Division
- Institutions Division
- Office of Budget Management
- Parole and Community Services Division

TABLE OF CONTENTS

PAGE

I. INTRODUCTION ----- 1

A. Factors Affecting Population ----- 3

B. Comparison of Spring 2002 with Fall 2001 Projections ----- 4

II. PREMISES ----- 7

C. Felon Admissions ----- 9

D. Significant Chaptered Legislation and Initiatives -----10

E. The Work Incentive Program (WIP) -----12

F. Court Sentences -----12

G. Placement Need Projections -----12

H. Parole Violators -----13

I. Felon Parole Population -----13

III. SPRING 2002 POPULATION PROJECTIONS -----17

J. Six-Year Population Projections-----19

K. Two-Year Institution Population and Placement Needs Projections -----23

L. Two-Year Parole and Outpatient Population Projections -----33

I. INTRODUCTION

INTRODUCTION

This document contains the California Department of Corrections (CDC) projections of institution, parole, and outpatient populations for Fiscal Years (FY) 2001-02 through 2006-07. The projections are based upon the most current available data and existing law.

The projections incorporate the expected impact of Proposition 36, the Substance Abuse and Crime Act of 2000. This Act, passed November 7, 2000 and effective July 1, 2001, diverts specific new court commitments to local drug treatment programs instead of prison. (Refer to the Fall 2001 Population Projections, Section II. D.1.)

A. Factors Affecting Population

- The CDC institution population has been relatively static over the last several years. On June 30, 2001, the institution population was 161,497, an average increase of almost 1,100 per year since June 30, 1998. This compares to an average growth of nearly 9,000 per year over the previous six years. The decrease since 1998 is mainly due to declining new admissions and the slow decline in the parole violator returned to custody (PV-RTC) rate.
- Since June 30, 2001, the institution population declined by 4,355 inmates to 157,142 on December 31, 2001. This decrease in six months is the largest drop in a six-month period since at least 1980 and countered the increase of the previous three years. This decrease is due to the implementation of Proposition 36.
- Despite the considerable decline in the last six months, the Fall 2001 Population Projections had estimated the decline to be even greater. In those projections, it was estimated the institution population would fall to 156,239 by December 31, 2001. As a result, the actual population was 903 higher than estimated (see Table A on the following page). This difference is mainly due to higher than estimated new admissions (especially in the October through December 2001 quarter) and higher than anticipated PV-RTC rates.

B. Comparison of Spring 2002 with Fall 2001 Projections

1. Institution Population

Based on the foregoing discussion in section A, the Spring 2002 Population Projections have been modified to reflect the impact of fewer Proposition 36 inmate diversions to local treatment. It is now expected that by June 30, 2002, the inmate population will be 1,472 higher than projected in the fall (an increase of 903 has already occurred through December 31, 2001). By June 30, 2003, this difference in projections will increase to 1,610. These increases, however, leave the Spring 2002 projection significantly lower than the actual population levels prior to the implementation of Proposition 36. The Spring 2002 Population Projections for June 30, 2002, still shows a population decline of more than 3,600 in the first year of Proposition 36.

The following Table A compares the Spring 2002 Population Projections to the projections issued last fall.

Table A

Comparison of Spring 2002 with Fall 2001 Projections
Institution Population
June 30, 2001 through June 30, 2007

| <u>Year End June 30</u> | <u>Spring 2002 Projections</u> | <u>Fall 2001 Projections</u> | <u>Difference</u> |
|-----------------------------|------------------------------------|----------------------------------|-------------------|
| 2001 | 161,497* | - | - |
| Dec. 31, 2001 | 157,142* | 156,239 | 903 |
| 2002 | 157,881 | 156,409 | 1,472 |
| 2003 | 157,331 | 155,721 | 1,610 |
| 2004 | 157,898 | 156,337 | 1,561 |
| 2005 | 159,868 | 158,429 | 1,439 |
| 2006 | 162,857 | 161,159 | 1,698 |
| 2007 | 166,473 | 164,623 | 1,850 |

*Actual.

The Spring 2002 Projections for the institution population is higher than forecast in the Fall Projections throughout the projection period. This is the result of a decrease in the expected impact of Proposition 36. The prison population is expected to be 157,881 by June 30, 2002, higher than the Fall Projections by 1,472.

The population on June 30, 2003, is expected to be 157,331, which is 1,610 higher than the Fall 2001 Projections. This increase also is primarily attributable to the reduced impact of Proposition 36.

2. Parole Population

In the Fall 2001 Projections, the parole population was expected to be 123,198 on December 31, 2001, which is 1,378 higher than the actual population for that date. This difference is due mainly to the continuing trend of decreased new admissions and more PV-RTCs than expected.

Table B

Comparison of Spring 2002 with Fall 2001 Projections
Parole Population
June 30, 2001 through June 30, 2007

| <u>Year End</u> <u>June 30</u> | <u>Spring 2002</u> <u>Projections</u> | <u>Fall 2001</u> <u>Projections</u> | <u>Difference</u> |
|-----------------------------------|--|--|-------------------|
| 2001 | 119,636* | - | - |
| Dec. 31, 2001 | 121,820* | 123,198 | -1,378 |
| 2002 | 119,848 | 120,523 | -675 |
| 2003 | 117,233 | 116,811 | 422 |
| 2004 | 113,898 | 112,301 | 1,597 |
| 2005 | 111,024 | 108,667 | 2,357 |
| 2006 | 109,281 | 106,882 | 2,399 |
| 2007 | 107,681 | 104,999 | 2,682 |

*Actual.

By June 30, 2002, the number of parolees supervised in California is projected to be 119,848, a decrease of 675 from the previous projection. This is due to the increase in PV-RTC rates. However, this decrease will be offset by a projected increase in the admissions in the following years beginning in FY 2002-03. By June 30, 2003, the population is expected to be 117,233, which is 422 higher than projected in Fall 2001. A steady decline in the parole population is still expected through June 30, 2007, at which time it is expected to be 107,681.

3. Other Populations

The civil addict institution population was 1,777 on December 31, 2001, over 170 lower than projected in the Fall Projections. It is now estimated that the civil addict population will be 1,726 on June 30, 2002, or 156 lower than the Fall Projections. By June 30, 2007, the population is expected to be 1,677. Conversely, the parole outpatient population increased more than anticipated, rising to 2,739 by December 31, 2001, which was 191 more than the Fall Projections. It is now estimated that the parole outpatient population will be 2,673 on June 30, 2002, which is 106 more than the Fall Projections. The parole outpatient population is expected to be 2,418 by June 30, 2007.

Figures 1 and 2 graphically display the Spring 2002 Projections for the institution and parole and outpatient populations. Figure 1 shows the actual and projected institution population, while Figure 2 shows the actual and projected California supervised parole and outpatient populations. Both figures are for FY 1991-92 through 2006-07.

Figure 1
Total Institution Population
Actual and Projected
Fiscal Years 1991-92 through 2006-07

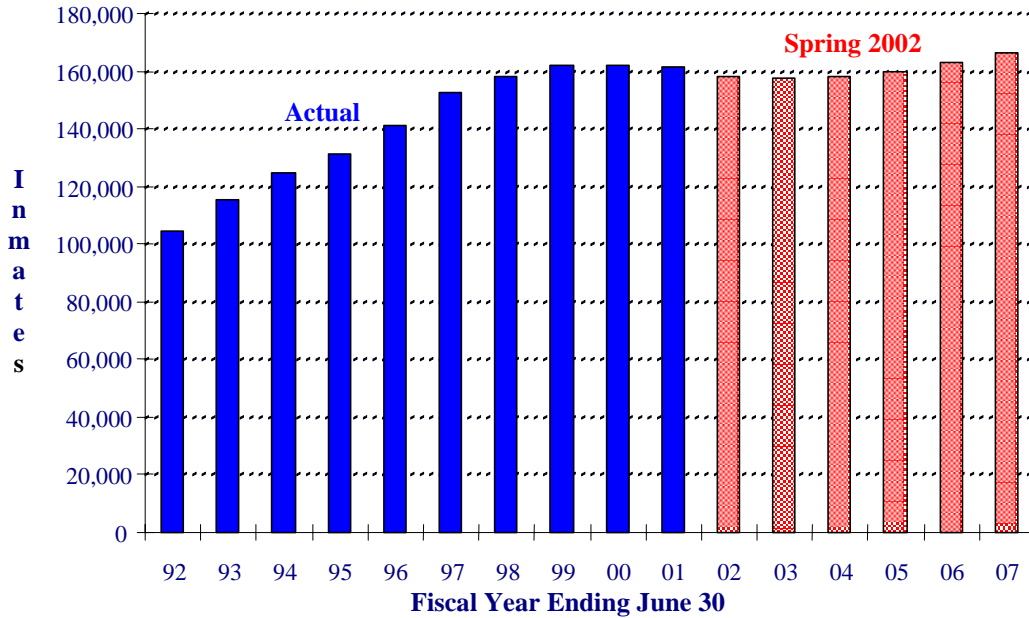
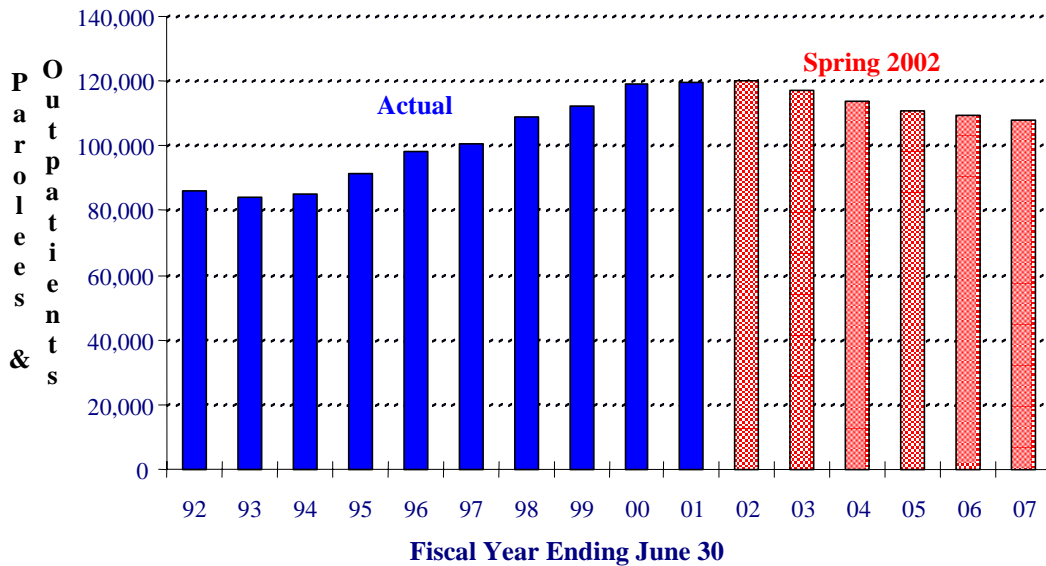


Figure 2
Total Parole and Outpatient Population
California Supervised, Actual and Projected
Fiscal Years 1991-92 through 2006-07



II. PREMISES

Figure 3
Total Felon Admissions*
Actual and Projected
Fiscal Years 1991-92 through 2006-07

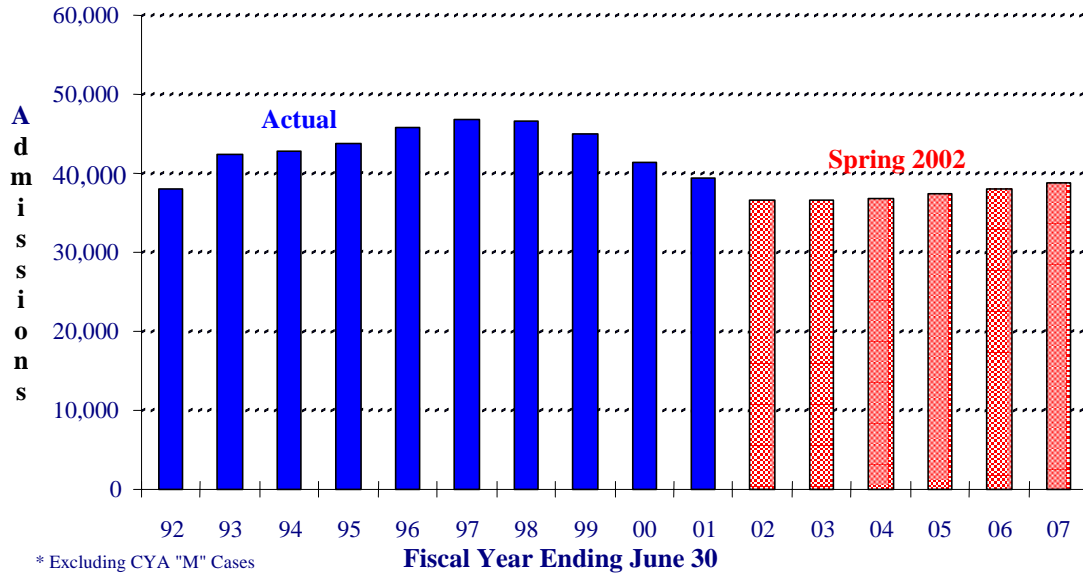
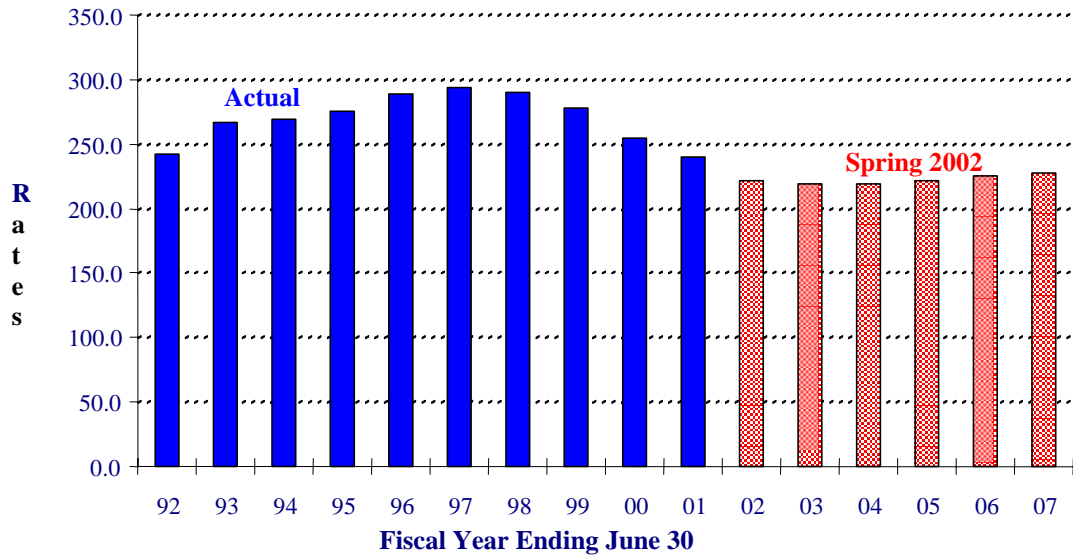


Figure 4
Total Felon Admission Rates
Actual and Projected
Fiscal Years 1991-92 through 2006-07



PREMISES

Figures 3 and 4 on the preceding page display the Spring 2002 Projections for felon admissions. Figure 3 shows the actual and projected felon admissions, while Figure 4 shows the actual and projected felon admission rates per 100,000 California residents, aged 18-49. Both figures are for FY 1991-92 through FY 2006-07.

C. Felon Admissions

Table C, below, summarizes actual felon admissions to a CDC prison from FY 1992-93 through FY 2000-01, while Table D displays the projected felon admissions for FY 2001-02 through FY 2006-07. Consistent with past practices, the admission rates in both tables are expressed as the number of felon admissions to prison from court per 100,000 California residents, aged 18-49.

Table C

Actual Total Felon Admissions to Prison
FY 1992-93 through FY 2000-01

| <u>Fiscal Year</u> | <u>Number of CDC Felon Admissions*</u> | <u>State Population Aged 18-49 (In Thousands)</u> | <u>Admission Rate**</u> |
|--------------------|--|---|-------------------------|
| 1992-93 | 42,339 | 15,846.2 | 267.2 |
| 1993-94 | 42,713 | 15,850.2 | 269.5 |
| 1994-95 | 43,707 | 15,844.2 | 275.9 |
| 1995-96 | 45,876 | 15,860.8 | 289.2 |
| 1996-97 | 46,750 | 15,930.4 | 293.5 |
| 1997-98 | 46,512 | 16,039.1 | 290.0 |
| 1998-99 | 44,985 | 16,170.3 | 278.2 |
| 1999-00 | 41,472 | 16,303.3 | 254.4 |
| 2000-01 | 39,419 | 16,420.3 | 240.1 |

* Not including CYA "M" cases, other state/federal admissions, or direct admissions to parole.
** Number of CDC felon admissions per 100,000 California state residents, aged 18-49.

There has been an absolute decline in admissions for the last four fiscal years. The total felon admissions for FY 2000-01 were 39,419, down 5.0 percent from FY 1999-00. This continued decline in admissions has contributed significantly to a decline in total institution population.

In the last six months, July to December 2001, total admissions were 18,125. This is 7.6 percent lower than admissions for the same time period one year ago, but 952 higher than projected in Fall 2001.

As shown in Table D, the Spring 2002 felon admissions projection is higher than the Fall 2001 Projections throughout the projection period. This increase is due to the assumption that Proposition 36 has not had the impact on admissions that was anticipated in the Fall Projections. Projected admissions gradually increase over the next six years.

Admissions are projected based on current trends, estimated impact of seasonality, and projected state population aged 18-49.

Table D

Projected Total Felon Admissions*
FY 2001-02 through FY 2006-07

| <u>Fiscal Year</u> | <u>Spring 2002</u> | <u>Fall 2001</u> | <u>Difference</u> | <u>Rate</u> |
|--------------------|--------------------|------------------|-------------------|-------------|
| 2001-02 | 36,625* | 34,819 | 1,806 | 221.3 |
| 2002-03 | 36,604 | 35,150 | 1,454 | 219.5 |
| 2003-04 | 36,788 | 35,429 | 1,359 | 219.2 |
| 2004-05 | 37,313 | 35,965 | 1,348 | 221.2 |
| 2005-06 | 37,991 | 36,687 | 1,304 | 224.6 |
| 2006-07 | 38,740 | 37,407 | 1,333 | 228.0 |

* Includes actual July to December data.

D. Significant Chaptered Legislation and Initiatives

1. Proposition 36

Proposition 36, Substance Abuse and Crime Prevention Act of 2000, became effective July 1, 2001. A description of this initiative may be found in the Fall 2001 Projections publication.

2. Legislation

A total of 15 legislative bills were chaptered since the Fall 2001 Projections, 3 of which will have no direct impact on the state prison system. The following 12 legislative bills will have an impact on the state prison system. However, because the impact of the length of confinement could not be estimated for these bills, they will not be included in the Spring 2002 Projections.

- Chapter 126, Statutes of 2001 (SB 0009, Soto), broadens the scope of “criminal storage of a firearm of the first degree,” by increasing the age of a minor to 18 years of age, who obtains a firearm and is involved in a related shooting.

- Chapter 235, Statutes of 2001 (AB 0078, Alquist), lowers the burden of proof required to toll the statute of limitations for the prosecution of specified sex crimes against a minor, when the crime is reported while the victim is still under age 21.
- Chapter 257, Statutes of 2001 (AB 1709, Migden), creates a new alternate felony/misdemeanor for persons who have custody of a mischievous animal, and the animal causes serious bodily injury to any human being, as specified. Urgency clause.
- Chapter 478, Statutes of 2001 (AB 0245, Wyland), expands the conditions of identity theft by removing the requirement that the identity theft be without the consent of the victim.
- Chapter 485, Statutes of 2001 (AB 1004, Bates), requires more frequent updating of sex offender information for a person without a residence address.
- Chapter 486, Statutes of 2001 (AB 1029, Oropeza), expands the scope of Vehicle Code provisions regarding confidentiality of records of persons in sensitive positions, by including specific employees designated by a chief of police or sheriff. Violation of the confidentiality requirements is a felony.
- Chapter 517, Statutes of 2001 (AB 0380, Wright), allows evidence of a prior aggravated sexual assault of a child to be offered in a criminal trial as evidence of a defendant's character.
- Chapter 544, Statutes of 2001 (AB 0004, Bates), requires a convicted sex offender located on the campus of any college, university or community college to register with the campus police chief in addition to the local law enforcement agency. Additionally, requires out-of-state residents who are required to register as sex offenders in their state to register as a sex offender in California if they are carrying on a vocation here.
- Chapter 559, Statutes of 2001 (AB 1012, Corbett), increases the penalty by expanding the scope of felony child pornography provisions to persons who have one of the newly specified prior convictions.
- Chapter 715, Statutes of 2001 (AB 1277, Cardenas), broadens the scope of existing requirements pertaining to pre-need funeral arrangements by requiring a funeral director to disclose provisions of a pre-need funeral agreement with a deceased, including whether benefits are unavailable or limited for any reason.
- Chapter 849, Statutes of 2001 (AB 1078, Jackson), expands the scope, for persons who have a current conviction for driving under the influence (DUI) with a prior felony violation of vehicular manslaughter, by removing the condition that the prior must have occurred within the previous 10 years.
- Chapter 937, Statutes of 2001 (SB 0626, Perata), broadens the exemptions for various firearm offenses that pertain to large-capacity magazines and assault weapons.

E. The Work Incentive Program (WIP)

This program allows eligible inmates to earn up to a six-month reduction per year in sentence length. The WIP applies to all felons who committed their offenses on or after January 1, 1983, and to those felons who committed their offenses before January 1, 1983, who chose to participate. Approximately 73 percent of the June 30, 2000, eligible population was earning one-half sentence reduction and participation is expected to continue at that level throughout the projection period. The Three Strikes Law limits credit earning to 20 percent for affected inmates. The Penal Code also limits persons who have been convicted of any violent felony to no more than a 15 percent sentence reduction.

F. Court Sentences

As shown in Table E, the average sentence for newly admitted felons and for parole violators returned with new terms (PV-WNT) decreased slightly from 54 months for the prior 3 fiscal years to 53 months. For the fifth consecutive year, the average work incentive credit is stabilized at 12 months. The anticipated time to serve continued to decline to approximately 34 months.

Table E

Average Sentence and Credits
For Felon New Admissions and PV-WNTs
(in months)

| <u>Fiscal Year</u> | <u>Sentence</u> ¹ | <u>Pre-confinement Credits</u> | <u>WIP Credits</u> ² | <u>Time to Serve</u> |
|--------------------|------------------------------|--------------------------------|---------------------------------|----------------------|
| 1992-93 | 48.0 | 6.6 | 17.7 | 23.7 |
| 1993-94 | 47.6 | 6.4 | 17.6 | 23.6 |
| 1994-95 | 50.9 | 6.9 | 15.0 | 29.0 |
| 1995-96 | 54.0 | 7.1 | 13.0 | 34.0 |
| 1996-97 | 56.0 | 7.1 | 12.6 | 36.3 |
| 1997-98 | 54.2 | 6.7 | 12.3 | 35.1 |
| 1998-99 | 54.5 | 6.7 | 12.5 | 35.4 |
| 1999-00 | 54.4 | 6.8 | 12.6 | 35.0 |
| 2000-01 | 53.2 | 6.9 | 12.0 | 34.3 |

¹ Includes third-strike and other life commitments.

² WIP credits based on eligibility.

G. Placement Need Projections

As in the Fall 2001 Projections, the Spring 2002 Projections of institution bed needs, by level, consider both inmate classification score level and administrative determinants, such as institutional security and public safety, as specified in Section 62010 of the

California Department of Corrections' Operations Manual. It is assumed that the male felon reception center population will fluctuate proportionately with the changes in male felon intake. Special housing projections assume a constant proportion of the number of inmates of each classification level in each of these categories over the projection period.

H. Parole Violators

For the six-month period July to December 2001, there were 33,303 male felon PV-RTCs or pending parole revocation (PendRev), 2,137 more than projected in the Fall 2001 Projections. The corresponding return rate was 54.5 (3.9 higher than projected). The Spring 2002 Projections assume the PV-RTC/PendRev rate will be about 3 points higher than projected in the Fall 2001 Projections due to Proposition 36, the additional plea negotiations required by the Armstrong II court case, and operational difficulties in processing revocations in a timely manner.

There were 6,174 male felon PV-WNTs for the July to December 2001 period, 87 more than projected in Fall 2001. The corresponding male felon PV-WNT rate was 10.1, only 0.2 higher than projected in Fall 2001. The Spring 2002 Projections assume the PV-WNT rate will be about the same as projected in the Fall 2001 Projections.

The graphs on the following pages illustrate actual and projected parole return numbers and rates. Figure 5 displays the actual number of male felon parole violator returns by quarter since June 1991. Figure 6 shows the actual and projected male felon PV-RTC/PendRev rates by quarter from June 1991 to June 2007, while Figure 7 tracks the actual and projected male felon PV-WNT rates.

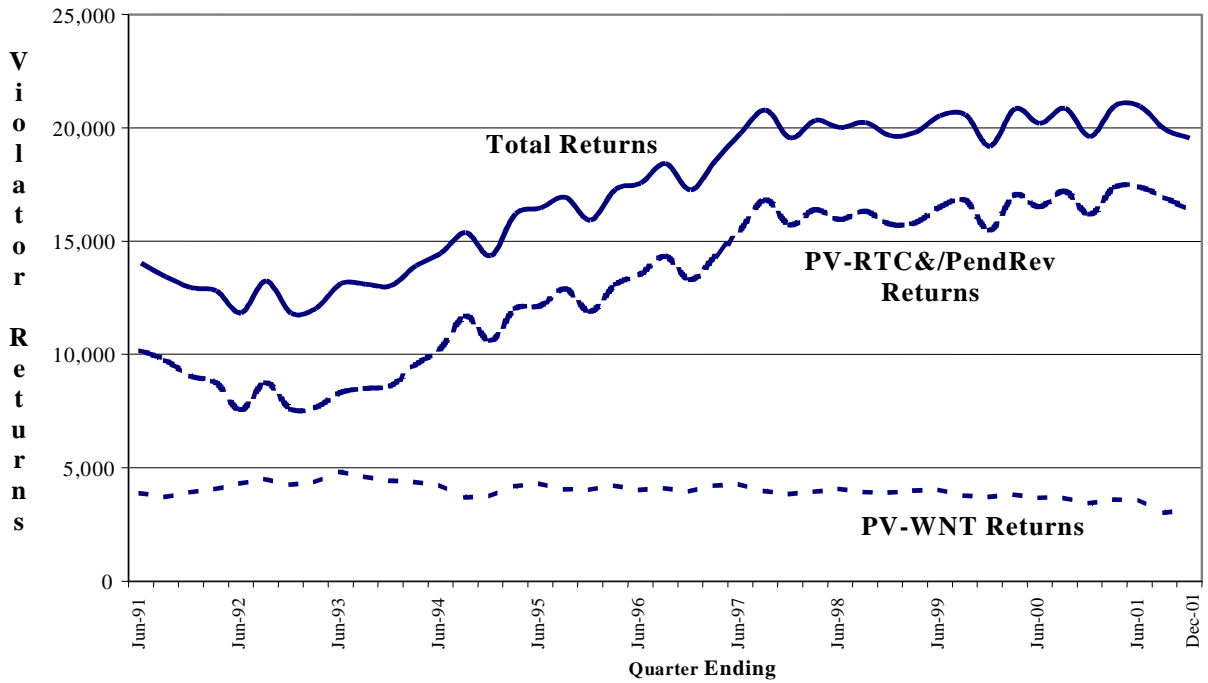
I. Felon Parole Population

On December 31, 2001, the felon parole population was 117,675, which is 1,551 lower than projected in Fall 2001. Between July and December 2001, this population increased by 2,047.

For the six-month period of July to December 2001, there were 16,264 male felon parolees suspended to parolee-at-large (PAL) status, 1,066 more than projected in Fall 2001. The corresponding PAL rate was 31.3, approximately 2.2 higher than projected. The Spring 2002 Projections assume that the male felon PAL rate will be about 2 points higher than projected in the Fall 2001 Projections.

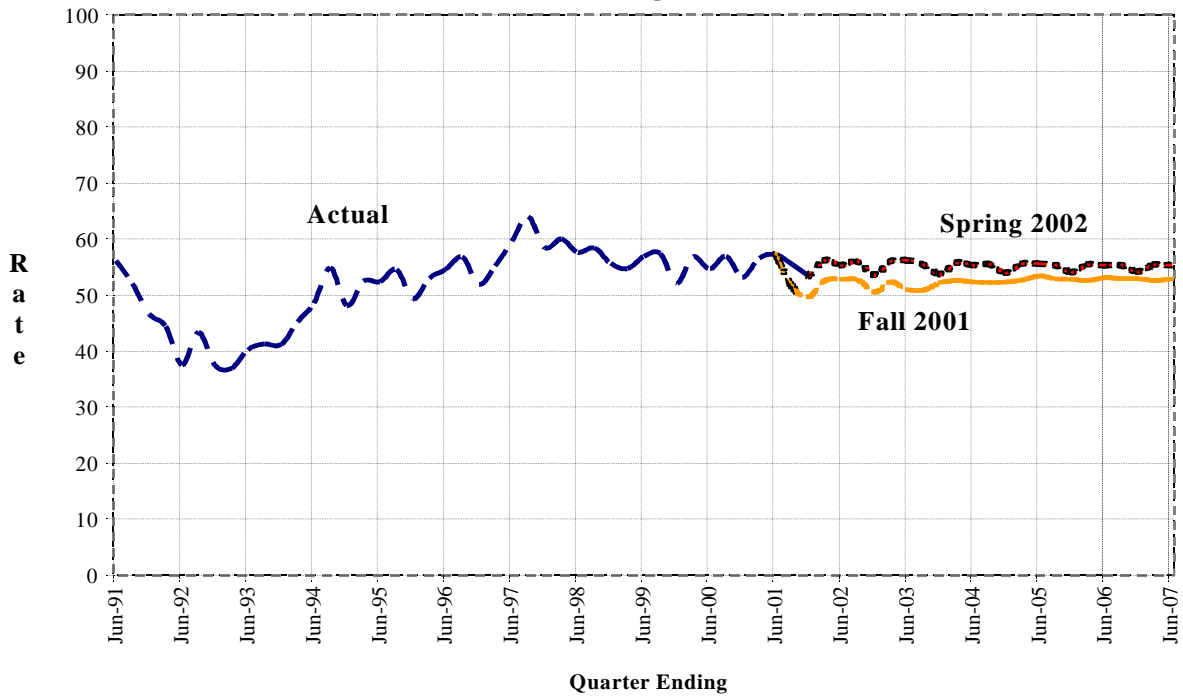
There were 15,354 male felon parolees discharged from parole over the last six months. This was only 208 more than projected in Fall 2001. The corresponding discharge rate was 25.2, only 0.2 higher than projected. The Spring 2002 Projections assume that the male felon discharge rate will be about the same as projected in the Fall 2001 Projections.

Figure 5
Male Felon Parole Violator Returns
June 1991 through December 2001



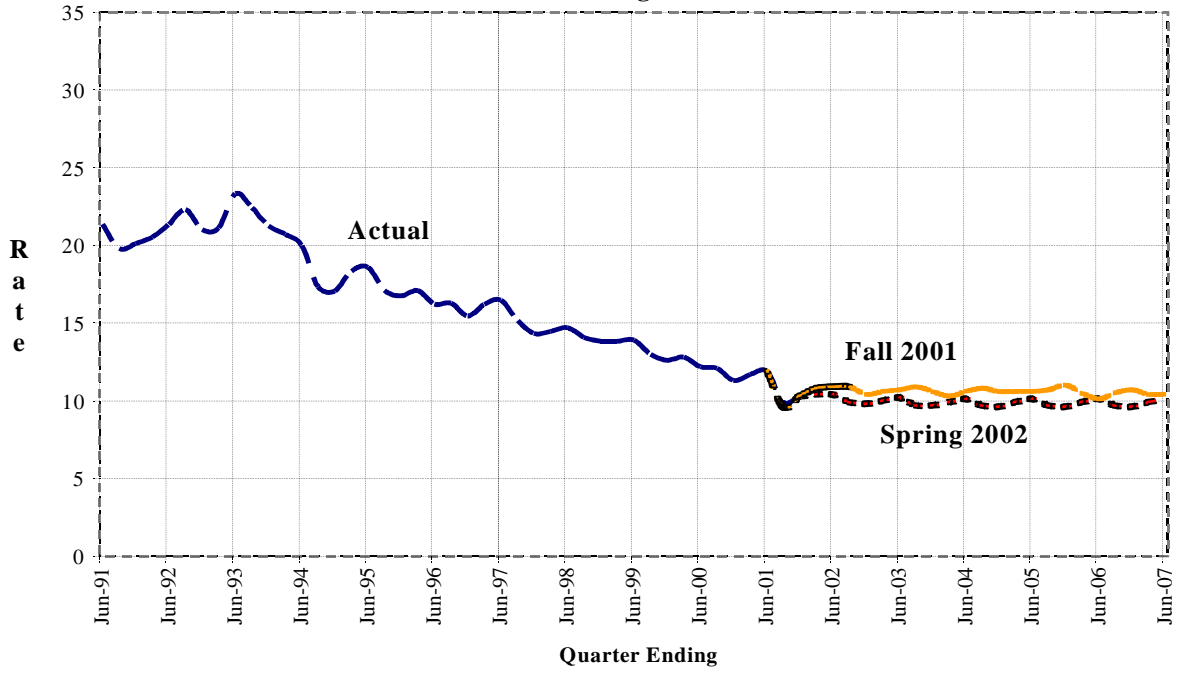
PV-RTC/PendRevs are parole violators returned to custody or pending revocation.
 PV-WNTs are parole violators returned with new term.

Figure 6
Male Felon PV-RTC/PendRev Rates
June 1991 through June 2007



PV-RTC/PendRevs are parole violators returned to custody or pending revocation.

Figure 7
Male Felon PV-WNT Rates
June 1991 through June 2007



PV-WNTs are parole violators returned with new term.

III. SPRING 2002 POPULATION PROJECTIONS

The Spring 2002 Projections are summarized in Tables 1 and 2 and are presented in greater detail in Tables 3 through 16. Tables 3 and 4 present the quarterly institution populations, while Tables 5 and 6 present detailed projections by inmate placement needs. Tables 7 through 10 project the movement of institution populations (including civil narcotic addicts), and Tables 11 through 16 present detailed projections of the parole and outpatient population.

J. Six-Year Population Projections

Tables 1-2

Fiscal Years 2001-02 through 2006-07

Spring 2002 Projections

Table 1
 Institution Population
 June 30, 1992 through June 30, 2007

| <u>As of June 30</u> | <u>Total</u> | <u>Total Males</u> | <u>Male Felons</u> | <u>Male Addicts</u> | <u>Male Others</u> | <u>Total Females</u> | <u>Female Felons</u> | <u>Female Addicts</u> | <u>Female Others</u> |
|--------------------------|--------------|------------------------|------------------------|-------------------------|------------------------|--------------------------|--------------------------|---------------------------|--------------------------|
| Actual | | | | | | | | | |
| 1992 | 104,352 | 98,008 | 94,777 | 2,477 | 754 | 6,344 | 5,654 | 628 | 62 |
| 1993 | 115,534 | 108,302 | 104,768 | 3,067 | 467 | 7,232 | 6,450 | 732 | 50 |
| 1994 | 124,813 | 116,879 | 113,238 | 3,189 | 452 | 7,934 | 7,144 | 750 | 40 |
| 1995 | 131,342 | 122,514 | 119,063 | 3,114 | 337 | 8,828 | 8,026 | 766 | 36 |
| 1996 | 141,017 | 131,273 | 128,497 | 2,465 | 311 | 9,744 | 8,975 | 736 | 33 |
| 1997 | 152,506 | 141,669 | 139,239 | 2,163 | 267 | 10,837 | 10,188 | 583 | 66 |
| 1998 | 158,207 | 147,001 | 144,805 | 1,924 | 272 | 11,206 | 10,594 | 562 | 50 |
| 1999 | 162,064 | 150,581 | 148,621 | 1,703 | 257 | 11,483 | 10,949 | 495 | 39 |
| 2000 | 162,000 | 150,793 | 148,754 | 1,776 | 263 | 11,207 | 10,620 | 535 | 52 |
| 2001 | 161,497 | 150,785 | 148,853 | 1,668 | 264 | 10,712 | 10,261 | 403 | 48 |
| Projected | | | | | | | | | |
| 2002 | 157,881 | 148,148 | 146,464 | 1,410 | 274 | 9,733 | 9,369 | 316 | 48 |
| 2003 | 157,331 | 147,710 | 146,032 | 1,405 | 273 | 9,621 | 9,272 | 301 | 48 |
| 2004 | 157,898 | 148,408 | 146,730 | 1,405 | 273 | 9,490 | 9,151 | 291 | 48 |
| 2005 | 159,868 | 150,409 | 148,731 | 1,405 | 273 | 9,459 | 9,127 | 284 | 48 |
| 2006 | 162,857 | 153,203 | 151,525 | 1,405 | 273 | 9,654 | 9,329 | 277 | 48 |
| 2007 | 166,473 | 156,464 | 154,786 | 1,405 | 273 | 10,009 | 9,689 | 272 | 48 |

Note: Others include county diagnostic cases, persons from other states, federal prisoners, county safekeepers, and California Youth Authority (CYA) wards.

Spring 2002 Projections

Table 2
 Parole and Outpatient Population
 Supervised in California
 June 30, 1992 through June 30, 2007

| <u>As of June 30</u> | <u>Total</u> | <u>Total Males</u> | <u>Male Felons</u> | <u>Male Addicts</u> | <u>Male Others</u> | <u>Total Females</u> | <u>Female Felons</u> | <u>Female Addicts</u> | <u>Female Others</u> |
|--------------------------|--------------|------------------------|------------------------|-------------------------|------------------------|--------------------------|--------------------------|---------------------------|--------------------------|
| Actual | | | | | | | | | |
| 1992 | 85,835 | 77,181 | 72,567 | 2,570 | 2,044 | 8,654 | 7,642 | 825 | 187 |
| 1993 | 83,887 | 75,735 | 70,809 | 2,839 | 2,087 | 8,152 | 7,024 | 941 | 187 |
| 1994 | 85,197 | 77,014 | 72,057 | 3,093 | 1,864 | 8,183 | 7,037 | 980 | 166 |
| 1995 | 91,456 | 83,048 | 78,450 | 3,346 | 1,252 | 8,408 | 7,325 | 960 | 123 |
| 1996 | 98,013 | 88,710 | 84,227 | 3,172 | 1,311 | 9,303 | 8,311 | 870 | 122 |
| 1997 | 100,828 | 91,002 | 87,202 | 2,684 | 1,116 | 9,826 | 8,817 | 880 | 129 |
| 1998 | 108,750 | 97,587 | 94,158 | 2,313 | 1,116 | 11,163 | 10,256 | 751 | 156 |
| 1999 | 112,494 | 100,716 | 97,593 | 1,954 | 1,169 | 11,778 | 10,944 | 678 | 156 |
| 2000 | 119,298 | 106,505 | 103,453 | 1,899 | 1,153 | 12,793 | 12,033 | 603 | 157 |
| 2001 | 119,636 | 106,396 | 103,232 | 2,011 | 1,153 | 13,240 | 12,396 | 674 | 170 |
| Projected | | | | | | | | | |
| 2002 | 119,848 | 106,400 | 103,176 | 1,980 | 1,244 | 13,448 | 12,566 | 693 | 189 |
| 2003 | 117,233 | 104,638 | 101,498 | 1,892 | 1,248 | 12,595 | 11,755 | 651 | 189 |
| 2004 | 113,898 | 101,791 | 98,680 | 1,863 | 1,248 | 12,107 | 11,286 | 632 | 189 |
| 2005 | 111,024 | 99,303 | 96,204 | 1,851 | 1,248 | 11,721 | 10,918 | 614 | 189 |
| 2006 | 109,281 | 97,927 | 94,840 | 1,839 | 1,248 | 11,354 | 10,565 | 600 | 189 |
| 2007 | 107,681 | 96,460 | 93,385 | 1,827 | 1,248 | 11,221 | 10,441 | 591 | 189 |

Note: Others include co-ops and other state/federal parolees.

K. Two-Year Institution Population and Placement Needs Projections

Tables 3-10

Detail Fiscal Years 2001-02 and 2002-03

Fiscal Years 2001-02 through 2006-07 (Tables 5 & 6)

Spring 2002 Projections

Table 3
 Institution Population
 Fiscal Years 2001/02 through 2002/03

| | Actual June 30 2001 | Sep 30 2001 | Dec 31 2001 | Mar 31 2002 | Jun 30 2002 | Sep 30 2002 | Dec 31 2002 | Mar 31 2003 | Jun 30 2003 |
|----------------------------------|---------------------------|----------------|----------------|----------------|----------------|----------------|----------------|----------------|----------------|
| Total Population | 161,497 | 158,759 | 157,142 | 157,854 | 157,881 | 157,307 | 156,623 | 156,779 | 157,331 |
| Men (Inc. CCC) | 150,785 | 148,537 | 147,391 | 148,069 | 148,148 | 147,574 | 147,024 | 147,185 | 147,710 |
| Women (Inc. CCC) | 10,712 | 10,222 | 9,751 | 9,785 | 9,733 | 9,733 | 9,599 | 9,594 | 9,621 |
| Total (Exc. CCC) | 153,758 | 150,994 | 149,376 | 150,095 | 151,550 | 150,854 | 150,170 | 150,297 | 150,849 |
| Men | 143,476 | 141,267 | 140,098 | 140,789 | 142,104 | 141,432 | 140,882 | 141,014 | 141,539 |
| Felons | 141,844 | 139,756 | 138,669 | 139,401 | 140,720 | 140,052 | 139,504 | 139,636 | 140,161 |
| Civil Narcotic Addicts | 1,368 | 1,283 | 1,149 | 1,113 | 1,110 | 1,107 | 1,105 | 1,105 | 1,105 |
| Others 1 | 264 | 228 | 280 | 275 | 274 | 273 | 273 | 273 | 273 |
| Women | 10,282 | 9,727 | 9,278 | 9,306 | 9,446 | 9,422 | 9,288 | 9,283 | 9,310 |
| Felons | 9,831 | 9,328 | 8,902 | 8,938 | 9,082 | 9,062 | 8,932 | 8,931 | 8,961 |
| Civil Narcotic Addicts | 403 | 356 | 328 | 320 | 316 | 312 | 308 | 304 | 301 |
| Others 1 | 48 | 43 | 48 | 48 | 48 | 48 | 48 | 48 | 48 |
| Community Correctional Centers 2 | 7,739 | 7,765 | 7,766 | 7,759 | 6,331 | 6,453 | 6,453 | 6,482 | 6,482 |
| Total Males | 7,309 | 7,270 | 7,293 | 7,280 | 6,044 | 6,142 | 6,142 | 6,171 | 6,171 |
| Male Felons | 7,009 | 6,970 | 6,993 | 6,980 | 5,744 | 5,842 | 5,842 | 5,871 | 5,871 |
| Male Civil Narcotic Addicts | 300 | 300 | 300 | 300 | 300 | 300 | 300 | 300 | 300 |
| Female Felons | 430 | 495 | 473 | 479 | 287 | 311 | 311 | 311 | 311 |

1 Others include county diagnostic cases, other state/federal prisoners, safekeepers, and CYA wards.

2 Community Correctional Center (CCC) data are based on the bed activation schedules provided by the Parole and Institutions Divisions.

Note: Data through December 2001 are actual.

Spring 2002 Projections

Table 4
 Average Daily Institution Population
 Fiscal Years 2001/02 through 2002/03

| | FY 2001/02 Avg | Sep 30 2001 | Dec 31 2001 | Mar 31 2002 | Jun 30 2002 | FY 2002/03 Avg | Sep 30 2002 | Dec 31 2002 | Mar 31 2003 | Jun 30 2003 |
|----------------------------------|----------------------|----------------|----------------|----------------|----------------|----------------------|----------------|----------------|----------------|----------------|
| Total Population | 158,376 | 159,940 | 158,461 | 157,286 | 157,819 | 157,144 | 157,765 | 157,012 | 156,674 | 157,124 |
| Men (Inc. CCC) | 148,374 | 149,514 | 148,407 | 147,544 | 148,031 | 147,479 | 148,015 | 147,351 | 147,067 | 147,483 |
| Women (Inc. CCC) | 10,002 | 10,426 | 10,054 | 9,742 | 9,788 | 9,665 | 9,750 | 9,661 | 9,607 | 9,641 |
| Total (Exc. CCC) | 150,671 | 152,185 | 150,681 | 149,525 | 150,290 | 150,703 | 151,414 | 150,559 | 150,197 | 150,642 |
| Men | 141,139 | 142,224 | 141,119 | 140,262 | 140,952 | 141,344 | 141,955 | 141,209 | 140,901 | 141,312 |
| Felons | 139,679 | 140,655 | 139,641 | 138,853 | 139,566 | 139,965 | 140,572 | 139,830 | 139,523 | 139,934 |
| Civil Narcotic Addicts | 1,194 | 1,323 | 1,210 | 1,131 | 1,112 | 1,106 | 1,109 | 1,106 | 1,105 | 1,105 |
| Others 1 | 267 | 247 | 269 | 277 | 274 | 273 | 274 | 273 | 273 | 273 |
| Women | 9,531 | 9,961 | 9,562 | 9,264 | 9,338 | 9,359 | 9,459 | 9,350 | 9,296 | 9,330 |
| Felons | 9,143 | 9,535 | 9,174 | 8,892 | 8,972 | 9,003 | 9,097 | 8,992 | 8,942 | 8,979 |
| Civil Narcotic Addicts | 341 | 381 | 343 | 324 | 318 | 308 | 314 | 310 | 306 | 303 |
| Others 1 | 47 | 45 | 45 | 48 | 48 | 48 | 48 | 48 | 48 | 48 |
| Community Correctional Centers 2 | 7,706 | 7,755 | 7,780 | 7,760 | 7,528 | 6,441 | 6,351 | 6,453 | 6,477 | 6,482 |
| Total Males | 7,235 | 7,290 | 7,287 | 7,282 | 7,079 | 6,135 | 6,060 | 6,142 | 6,166 | 6,171 |
| Male Felons | 6,935 | 6,990 | 6,987 | 6,982 | 6,779 | 5,835 | 5,760 | 5,842 | 5,866 | 5,871 |
| Male Civil Narcotic Addicts | 300 | 300 | 300 | 300 | 300 | 300 | 300 | 300 | 300 | 300 |
| Female Felons | 471 | 465 | 492 | 478 | 449 | 306 | 291 | 311 | 311 | 311 |

1 Others include county diagnostic cases, other state/federal prisoners, safekeepers, and CYA wards.

2 Community Correctional Center (CCC) data are based on the bed activation schedules provided by the Parole and Institutions Divisions.

Note: Data through December 2001 are actual.

Spring 2002 Projections

Table 5
 Projected Placement Needs for Male Felon Institution Population
 Fiscal Years 2001/02 through 2006/07

| <u>Fiscal Year</u> | <u>Fiscal Quarter</u> | <u>Reception Center</u> | <u>Level I</u> | <u>Level II</u> | <u>Level III</u> | <u>Level IV</u> | <u>Special PHU</u> | <u>Housing SHU</u> | <u>Total Housing</u> | <u>Grand Total</u> |
|--------------------|-----------------------|-------------------------|----------------|-----------------|------------------|-----------------|--------------------|--------------------|----------------------|--------------------|
| 2001/02 | September 30 | 20,393 | 32,628 | 31,510 | 33,765 | 25,490 | 34 | 2,906 | 2,940 | 146,726 |
| | December 31 | 21,251 | 30,791 | 31,385 | 34,075 | 25,235 | 30 | 2,895 | 2,925 | 145,662 |
| | March 31 | 21,720 | 30,776 | 31,410 | 34,130 | 25,410 | 30 | 2,905 | 2,935 | 146,381 |
| | June 30 | 21,415 | 30,784 | 31,455 | 34,240 | 25,610 | 30 | 2,930 | 2,960 | 146,464 |
| 2002/03 | September 30 | 21,195 | 30,529 | 31,240 | 34,210 | 25,745 | 30 | 2,945 | 2,975 | 145,894 |
| | December 31 | 20,920 | 30,306 | 31,055 | 34,195 | 25,880 | 30 | 2,960 | 2,990 | 145,346 |
| | March 31 | 21,030 | 30,212 | 31,005 | 34,235 | 26,020 | 30 | 2,975 | 3,005 | 145,507 |
| | June 30 | 21,150 | 30,257 | 31,080 | 34,340 | 26,185 | 30 | 2,990 | 3,020 | 146,032 |
| 2003/04 | June 30 | 20,700 | 30,265 | 31,175 | 34,715 | 26,785 | 30 | 3,060 | 3,090 | 146,730 |
| 2004/05 | June 30 | 20,575 | 30,686 | 31,655 | 35,270 | 27,390 | 30 | 3,125 | 3,155 | 148,731 |
| 2005/06 | June 30 | 20,395 | 31,460 | 32,420 | 36,010 | 28,005 | 35 | 3,200 | 3,235 | 151,525 |
| 2006/07 | June 30 | 20,335 | 32,401 | 33,300 | 36,820 | 28,630 | 35 | 3,265 | 3,300 | 154,786 |

Note: These estimates assume that the male reception center population will increase proportionately with the increase in male felon intake.

Spring 2002 Projections

Table 6
 Projected Placement Needs for Total Male Institution Population
 Fiscal Years 2001/02 through 2006/07

| <u>Fiscal Year</u> | <u>Fiscal Quarter</u> | <u>Reception Center</u> | <u>Level I</u> | <u>Level II</u> | <u>Level III</u> | <u>Level IV</u> | <u>Special PHU</u> | <u>Housing SHU</u> | <u>Total Housing</u> | <u>Grand Total</u> |
|--------------------|-----------------------|-------------------------|----------------|-----------------|------------------|-----------------|--------------------|--------------------|----------------------|--------------------|
| 2001/02 | September 30 | 20,621 | 32,628 | 33,093 | 33,765 | 25,490 | 34 | 2,906 | 2,940 | 148,537 |
| | December 31 | 21,531 | 30,791 | 32,834 | 34,075 | 25,235 | 30 | 2,895 | 2,925 | 147,391 |
| | March 31 | 21,995 | 30,776 | 32,823 | 34,130 | 25,410 | 30 | 2,905 | 2,935 | 148,069 |
| | June 30 | 21,689 | 30,784 | 32,865 | 34,240 | 25,610 | 30 | 2,930 | 2,960 | 148,148 |
| 2002/03 | September 30 | 21,468 | 30,529 | 32,647 | 34,210 | 25,745 | 30 | 2,945 | 2,975 | 147,574 |
| | December 31 | 21,193 | 30,306 | 32,460 | 34,195 | 25,880 | 30 | 2,960 | 2,990 | 147,024 |
| | March 31 | 21,303 | 30,212 | 32,410 | 34,235 | 26,020 | 30 | 2,975 | 3,005 | 147,185 |
| | June 30 | 21,423 | 30,257 | 32,485 | 34,340 | 26,185 | 30 | 2,990 | 3,020 | 147,710 |
| 2003/04 | June 30 | 20,973 | 30,265 | 32,580 | 34,715 | 26,785 | 30 | 3,060 | 3,090 | 148,408 |
| 2004/05 | June 30 | 20,848 | 30,686 | 33,060 | 35,270 | 27,390 | 30 | 3,125 | 3,155 | 150,409 |
| 2005/06 | June 30 | 20,668 | 31,460 | 33,825 | 36,010 | 28,005 | 35 | 3,200 | 3,235 | 153,203 |
| 2006/07 | June 30 | 20,608 | 32,401 | 34,705 | 36,820 | 28,630 | 35 | 3,265 | 3,300 | 156,464 |

Note: These estimates assume that the male reception center population will increase proportionately with the increase in male felon intake. Reception Center includes others as defined on Table 1. Level II includes civil narcotic addicts.

Population Projections Unit
Estimates and Statistical Analysis Section
Offender Information Services Branch

Department of Corrections
State of California
02/28/2002

Spring 2002 Projections

Table 7
Movement of Male Felon Institution Population
Fiscal Years 2000/01 through 2002/03

| <u>Fiscal Year</u> | <u>Fiscal Quarter</u> | | <u>Total Intake</u> | <u>From Court</u> | <u>PV-WNT</u> | <u>PV-RTC</u> | <u>Other Intake</u> | <u>Total Outgo</u> | <u>First Parole</u> | <u>PV-RTC Parole</u> | <u>Other Outgo</u> | <u>Gain/Loss</u> | <u>Population End of Qtr</u> |
|--------------------|-----------------------|---|---------------------|-------------------|---------------|---------------|---------------------|--------------------|---------------------|----------------------|--------------------|------------------|------------------------------|
| 2000/01 | Jul-Sep | | 29,612 | 8,701 | 3,661 | 17,212 | 38 | 29,007 | 12,547 | 15,632 | 828 | 636 | 149,390 |
| | Oct-Dec | | 28,323 | 8,670 | 3,433 | 16,183 | 37 | 30,065 | 13,077 | 16,114 | 874 | -1,700 | 147,690 |
| | Jan-Mar | | 29,708 | 8,692 | 3,593 | 17,386 | 37 | 29,030 | 12,250 | 15,892 | 888 | 621 | 148,311 |
| | Apr-Jun | | 30,001 | 8,877 | 3,607 | 17,480 | 37 | 29,370 | 12,569 | 15,821 | 980 | 542 | 148,853 |
| | Total | | 117,644 | 34,940 | 14,294 | 68,261 | 149 | 117,472 | 50,443 | 63,459 | 3,570 | 99 | |
| 2001/02 | Jul-Sep | | 27,797 | 7,823 | 3,011 | 16,926 | 37 | 29,961 | 12,483 | 16,543 | 935 | -2,127 | 146,726 |
| | Oct-Dec | | 27,975 | 8,370 | 3,169 | 16,397 | 39 | 29,090 | 12,100 | 16,062 | 928 | -1,064 | 145,662 |
| | Jan-Mar | * | 28,562 | 8,263 | 3,418 | 16,843 | 38 | 27,843 | 11,831 | 15,325 | 687 | 719 | 146,381 |
| | Apr-Jun | * | 28,161 | 8,286 | 3,315 | 16,522 | 38 | 28,078 | 12,016 | 15,297 | 765 | 83 | 146,464 |
| | Total | | 112,495 | 32,742 | 12,913 | 66,688 | 152 | 114,972 | 48,430 | 63,227 | 3,315 | -2,389 | |
| 2002/03 | Jul-Sep | * | 27,872 | 8,161 | 3,290 | 16,383 | 38 | 28,442 | 11,861 | 15,716 | 865 | -570 | 145,894 |
| | Oct-Dec | * | 27,510 | 8,131 | 3,179 | 16,163 | 37 | 28,058 | 11,674 | 15,549 | 835 | -548 | 145,346 |
| | Jan-Mar | * | 27,654 | 8,214 | 3,310 | 16,092 | 38 | 27,493 | 11,403 | 15,299 | 791 | 161 | 145,507 |
| | Apr-Jun | * | 27,814 | 8,360 | 3,294 | 16,122 | 38 | 27,289 | 11,519 | 14,939 | 831 | 525 | 146,032 |
| | Total | | 110,850 | 32,866 | 13,073 | 64,760 | 151 | 111,282 | 46,457 | 61,503 | 3,322 | -432 | |

* Projected

Note: Other intake includes CYA
Other outgo includes discharges and deaths.

Spring 2002 Projections

Table 8
 Movement of Female Felon Institution Population
 Fiscal Years 2000/01 through 2002/03

| <u>Fiscal Year</u> | <u>Fiscal Quarter</u> | <u>Total Intake</u> | <u>From Court</u> | <u>PV-WNT</u> | <u>PV-RTC</u> | <u>Total Outgo</u> | <u>First Parole</u> | <u>PV-RTC Parole</u> | <u>Other Outgo</u> | <u>Gain/Loss</u> | <u>Population End of Qtr</u> |
|--------------------|-----------------------|---------------------|-------------------|---------------|---------------|--------------------|---------------------|----------------------|--------------------|------------------|------------------------------|
| 2000/01 | Jul-Sep | 3,177 | 1,141 | 355 | 1,681 | 3,278 | 1,614 | 1,589 | 75 | -89 | 10,531 |
| | Oct-Dec | 3,068 | 1,116 | 348 | 1,604 | 3,202 | 1,552 | 1,574 | 76 | -104 | 10,427 |
| | Jan-Mar | 3,026 | 1,098 | 326 | 1,602 | 3,186 | 1,527 | 1,579 | 80 | -186 | 10,241 |
| | Apr-Jun | 3,150 | 1,134 | 317 | 1,699 | 3,134 | 1,482 | 1,571 | 81 | 20 | 10,261 |
| Total | | 12,421 | 4,489 | 1,346 | 6,586 | 12,800 | 6,175 | 6,313 | 312 | -359 | |
| 2001/02 | Jul-Sep | 2,801 | 993 | 229 | 1,579 | 3,244 | 1,529 | 1,647 | 68 | -438 | 9,823 |
| | Oct-Dec | 2,628 | 948 | 281 | 1,399 | 3,102 | 1,526 | 1,523 | 53 | -448 | 9,375 |
| | Jan-Mar * | 2,916 | 996 | 303 | 1,617 | 2,874 | 1,386 | 1,453 | 35 | 42 | 9,417 |
| | Apr-Jun * | 2,774 | 961 | 299 | 1,514 | 2,822 | 1,306 | 1,452 | 64 | -48 | 9,369 |
| Total | | 11,119 | 3,898 | 1,112 | 6,109 | 12,042 | 5,747 | 6,075 | 220 | -892 | |
| 2002/03 | Jul-Sep * | 2,781 | 943 | 313 | 1,525 | 2,777 | 1,281 | 1,434 | 62 | 4 | 9,373 |
| | Oct-Dec * | 2,679 | 916 | 303 | 1,460 | 2,809 | 1,284 | 1,462 | 63 | -130 | 9,243 |
| | Jan-Mar * | 2,731 | 936 | 301 | 1,494 | 2,732 | 1,267 | 1,405 | 60 | -1 | 9,242 |
| | Apr-Jun * | 2,681 | 949 | 281 | 1,451 | 2,651 | 1,197 | 1,394 | 60 | 30 | 9,272 |
| Total | | 10,872 | 3,744 | 1,198 | 5,930 | 10,969 | 5,029 | 5,695 | 245 | -97 | |

* Projected

Note: Other outgo includes discharges and deaths.

Spring 2002 Projections

Table 9
 Movement of Male Civil Narcotic Addict Institution Population
 Fiscal Years 2000/01 through 2002/03

| <u>Fiscal Year</u> | <u>Fiscal Quarter</u> | | <u>Total Intake</u> | <u>From Court</u> | <u>Outpatients Returned</u> | <u>Total Outgo</u> | <u>Outpatient Status</u> | <u>Other Outgo</u> | <u>Gain/Loss</u> | <u>Population End of Qtr</u> |
|--------------------|-----------------------|---|---------------------|-------------------|-----------------------------|--------------------|--------------------------|--------------------|------------------|------------------------------|
| 2000/01 | Jul-Sep | | 478 | 275 | 203 | 433 | 350 | 83 | 31 | 1,807 |
| | Oct-Dec | | 498 | 302 | 196 | 598 | 533 | 65 | -107 | 1,700 |
| | Jan-Mar | | 477 | 252 | 225 | 423 | 344 | 79 | 63 | 1,763 |
| | Apr-Jun | | 508 | 280 | 228 | 623 | 493 | 130 | -95 | 1,668 |
| | Total | | 1,961 | 1,109 | 852 | 2,077 | 1,720 | 357 | -108 | |
| 2001/02 | Jul-Sep | | 397 | 193 | 204 | 506 | 430 | 76 | -85 | 1,583 |
| | Oct-Dec | | 381 | 168 | 213 | 501 | 454 | 47 | -134 | 1,449 |
| | Jan-Mar | * | 499 | 327 | 172 | 537 | 400 | 137 | -36 | 1,413 |
| | Apr-Jun | * | 496 | 326 | 170 | 500 | 367 | 133 | -3 | 1,410 |
| | Total | | 1,773 | 1,014 | 759 | 2,044 | 1,651 | 393 | -258 | |
| 2002/03 | Jul-Sep | * | 490 | 324 | 166 | 498 | 365 | 133 | -3 | 1,407 |
| | Oct-Dec | * | 483 | 325 | 158 | 498 | 366 | 132 | -2 | 1,405 |
| | Jan-Mar | * | 486 | 327 | 159 | 491 | 366 | 125 | 0 | 1,405 |
| | Apr-Jun | * | 484 | 327 | 157 | 483 | 360 | 123 | 0 | 1,405 |
| | Total | | 1,943 | 1,303 | 640 | 1,970 | 1,457 | 513 | -5 | |

* Projected

Note: Other outgo includes discharges and deaths.

Spring 2002 Projections

Table 10
 Movement of Female Civil Narcotic Addict Institution Population
 Fiscal Years 2000/01 through 2002/03

| <u>Fiscal Year</u> | <u>Fiscal Quarter</u> | <u>Total Intake</u> | <u>From Court</u> | <u>Outpatients Returned</u> | <u>Total Outgo</u> | <u>Outpatient Status</u> | <u>Other Outgo</u> | <u>Gain/Loss</u> | <u>Population End of Qtr</u> |
|--------------------|-----------------------|---------------------|-------------------|-----------------------------|--------------------|--------------------------|--------------------|------------------|------------------------------|
| 2000/01 | Jul-Sep | 129 | 87 | 42 | 148 | 121 | 27 | -13 | 522 |
| | Oct-Dec | 117 | 73 | 44 | 136 | 114 | 22 | -17 | 505 |
| | Jan-Mar | 111 | 64 | 47 | 173 | 154 | 19 | -62 | 443 |
| | Apr-Jun | 97 | 62 | 35 | 135 | 121 | 14 | -40 | 403 |
| Total | | 454 | 286 | 168 | 592 | 510 | 82 | -132 | |
| 2001/02 | Jul-Sep | 79 | 49 | 30 | 133 | 125 | 8 | -47 | 356 |
| | Oct-Dec | 89 | 52 | 37 | 114 | 107 | 7 | -28 | 328 |
| | Jan-Mar * | 84 | 50 | 34 | 94 | 77 | 17 | -8 | 320 |
| | Apr-Jun * | 85 | 50 | 35 | 90 | 75 | 15 | -4 | 316 |
| Total | | 337 | 201 | 136 | 431 | 384 | 47 | -87 | |
| 2002/03 | Jul-Sep * | 83 | 50 | 33 | 90 | 72 | 18 | -4 | 312 |
| | Oct-Dec * | 79 | 49 | 30 | 86 | 72 | 14 | -4 | 308 |
| | Jan-Mar * | 79 | 47 | 32 | 84 | 70 | 14 | -4 | 304 |
| | Apr-Jun * | 78 | 48 | 30 | 84 | 71 | 13 | -3 | 301 |
| Total | | 319 | 194 | 125 | 344 | 285 | 59 | -15 | |

* Projected

Note: Other outgo includes discharges and deaths.

L. Two-Year Parole and Outpatient Population Projections

Tables 11-16

Detail Fiscal Years 2001-02 and 2002-03

Spring 2002 Projections

Table 11
 California Supervised Parole and Outpatient Population
 Fiscal Years 2001/02 through 2002/03

| | Actual June 30 2001 | Sep 30 2001 | Dec 31 2001 | Mar 31 2002 | Jun 30 2002 | Sep 30 2002 | Dec 31 2002 | Mar 31 2003 | Jun 30 2003 |
|---------------------|---------------------------|----------------|----------------|----------------|----------------|----------------|----------------|----------------|----------------|
| Total Men and Women | 119,636 | 121,188 | 121,820 | 120,908 | 119,848 | 119,440 | 119,212 | 118,401 | 117,233 |
| Felons | 115,628 | 117,055 | 117,675 | 116,759 | 115,742 | 115,376 | 115,177 | 114,399 | 113,253 |
| Outpatients | 2,685 | 2,754 | 2,739 | 2,723 | 2,673 | 2,628 | 2,598 | 2,565 | 2,543 |
| Others 1 | 1,323 | 1,379 | 1,406 | 1,426 | 1,433 | 1,436 | 1,437 | 1,437 | 1,437 |
| Total Men | 106,396 | 107,626 | 108,133 | 107,339 | 106,400 | 106,222 | 106,136 | 105,577 | 104,638 |
| Felons | 103,232 | 104,375 | 104,893 | 104,084 | 103,176 | 103,028 | 102,960 | 102,422 | 101,498 |
| Outpatients | 2,011 | 2,048 | 2,023 | 2,018 | 1,980 | 1,947 | 1,928 | 1,907 | 1,892 |
| Others 1 | 1,153 | 1,203 | 1,217 | 1,237 | 1,244 | 1,247 | 1,248 | 1,248 | 1,248 |
| Total Women | 13,240 | 13,562 | 13,687 | 13,569 | 13,448 | 13,218 | 13,076 | 12,824 | 12,595 |
| Felons | 12,396 | 12,680 | 12,782 | 12,675 | 12,566 | 12,348 | 12,217 | 11,977 | 11,755 |
| Outpatients | 674 | 706 | 716 | 705 | 693 | 681 | 670 | 658 | 651 |
| Others 1 | 170 | 176 | 189 | 189 | 189 | 189 | 189 | 189 | 189 |

1 Others include co-ops and other state/federal parolees.

Note: Data through December 2001 are actual.

Spring 2002 Projections

Table 12
 Average Daily Parole and Outpatient Population
 Fiscal Years 2001/02 through 2002/03

| | FY 2001/02 Avg | Sep 30 2001 | Dec 31 2001 | Mar 31 2002 | Jun 30 2002 | FY 2002/03 Avg | Sep 30 2002 | Dec 31 2002 | Mar 31 2003 | Jun 30 2003 |
|---------------------|----------------------|----------------|----------------|----------------|----------------|----------------------|----------------|----------------|----------------|----------------|
| Total Men and Women | 120,893 | 120,579 | 121,001 | 121,643 | 120,349 | 118,850 | 119,539 | 119,364 | 118,721 | 117,774 |
| Felons | 116,783 | 116,541 | 116,876 | 117,494 | 116,221 | 114,814 | 115,455 | 115,314 | 114,701 | 113,784 |
| Outpatients | 2,718 | 2,711 | 2,732 | 2,731 | 2,697 | 2,599 | 2,648 | 2,613 | 2,583 | 2,552 |
| Others 1 | 1,392 | 1,327 | 1,393 | 1,418 | 1,430 | 1,436 | 1,435 | 1,436 | 1,437 | 1,437 |
| Total Men | 107,358 | 107,144 | 107,459 | 107,957 | 106,870 | 105,817 | 106,206 | 106,195 | 105,775 | 105,091 |
| Felons | 104,131 | 103,961 | 104,223 | 104,708 | 103,630 | 102,640 | 102,998 | 103,010 | 102,608 | 101,945 |
| Outpatients | 2,018 | 2,025 | 2,025 | 2,021 | 1,999 | 1,929 | 1,962 | 1,938 | 1,919 | 1,898 |
| Others 1 | 1,210 | 1,158 | 1,211 | 1,229 | 1,241 | 1,247 | 1,246 | 1,247 | 1,248 | 1,248 |
| Total Women | 13,536 | 13,435 | 13,543 | 13,685 | 13,479 | 13,033 | 13,332 | 13,169 | 12,946 | 12,683 |
| Felons | 12,653 | 12,580 | 12,653 | 12,786 | 12,591 | 12,174 | 12,457 | 12,305 | 12,093 | 11,839 |
| Outpatients | 700 | 686 | 707 | 710 | 698 | 670 | 686 | 675 | 664 | 654 |
| Others 1 | 182 | 169 | 182 | 189 | 189 | 189 | 189 | 189 | 189 | 189 |

1 Others include co-ops and other state/federal parolees.

Note: Data through December 2001 are actual.

Population Projections Unit
Estimates and Statistical Analysis Section
Offender Information Services Branch

Department of Corrections
State of California
02/28/2002

Spring 2002 Projections

Table 13
Movement of Male Felon Parole Population
Fiscal Years 2000/01 through 2002/03

| Fiscal Year | Fiscal Quarter | Total Intake | Paroled | Reinstated | Other Intake | Total Outgo | PV-WNT | PV-RTC | PALS | Other Outgo | Gain/Loss | Population End of Qtr |
|-------------|----------------|--------------|---------|------------|--------------|-------------|--------|--------|--------|-------------|-----------|-----------------------|
| 2000/01 | Jul-Sep | 33,967 | 28,129 | 5,570 | 268 | 34,210 | 3,508 | 15,351 | 7,919 | 7,432 | -360 | 103,093 |
| | Oct-Dec | 34,701 | 29,146 | 5,273 | 282 | 32,930 | 3,307 | 14,527 | 7,336 | 7,760 | 1,944 | 105,037 |
| | Jan-Mar | 34,118 | 28,112 | 5,727 | 279 | 34,806 | 3,439 | 15,501 | 7,682 | 8,184 | -669 | 104,368 |
| | Apr-Jun | 34,323 | 28,352 | 5,674 | 297 | 35,497 | 3,445 | 15,470 | 8,175 | 8,407 | -1,136 | 103,232 |
| Total | | 137,109 | 113,739 | 22,244 | 1,126 | 137,443 | 13,699 | 60,849 | 31,112 | 31,783 | -221 | |
| 2001/02 | Jul-Sep | 34,914 | 28,981 | 5,679 | 254 | 33,847 | 2,888 | 15,007 | 7,782 | 8,170 | 1,143 | 104,375 |
| | Oct-Dec | 34,286 | 28,127 | 5,963 | 196 | 33,833 | 3,038 | 14,497 | 8,480 | 7,818 | 518 | 104,893 |
| | Jan-Mar * | 33,458 | 27,156 | 6,022 | 280 | 34,267 | 3,254 | 14,840 | 8,278 | 7,895 | -809 | 104,084 |
| | Apr-Jun * | 33,268 | 27,313 | 5,699 | 256 | 34,176 | 3,173 | 14,669 | 8,140 | 8,194 | -908 | 103,176 |
| Total | | 135,926 | 111,577 | 23,363 | 986 | 136,123 | 12,353 | 59,013 | 32,680 | 32,077 | -56 | |
| 2002/03 | Jul-Sep * | 33,486 | 27,577 | 5,655 | 254 | 33,634 | 3,132 | 14,475 | 7,866 | 8,161 | -148 | 103,028 |
| | Oct-Dec * | 33,235 | 27,223 | 5,758 | 254 | 33,303 | 3,032 | 14,189 | 7,975 | 8,107 | -68 | 102,960 |
| | Jan-Mar * | 32,678 | 26,702 | 5,721 | 255 | 33,216 | 3,175 | 14,173 | 7,841 | 8,027 | -538 | 102,422 |
| | Apr-Jun * | 32,429 | 26,458 | 5,710 | 261 | 33,353 | 3,136 | 14,150 | 7,708 | 8,359 | -924 | 101,498 |
| Total | | 131,828 | 107,960 | 22,844 | 1,024 | 133,506 | 12,475 | 56,987 | 31,390 | 32,654 | -1,678 | |

* Projected

Note: Other intake includes transfers direct from court, interstate parole unit (ISPU), and co-ops.
PALS are parolees-at-large with warrant issued (absconded from parole supervision).
Other outgo includes transfers to ISPU, discharges and deaths.

Spring 2002 Projections

Table 14
Movement of Female Felon Parole Population
Fiscal Years 2000/01 through 2002/03

| <u>Fiscal Year</u> | <u>Fiscal Quarter</u> | <u>Total Intake</u> | <u>Paroled</u> | <u>Reinstated</u> | <u>Other Intake</u> | <u>Total Outgo</u> | <u>PV-WNT</u> | <u>PV-RTC</u> | <u>PALS</u> | <u>Other Outgo</u> | <u>Gain/Loss</u> | <u>Population End of Qtr</u> |
|--------------------|-----------------------|---------------------|----------------|-------------------|---------------------|--------------------|---------------|---------------|-------------|--------------------|------------------|------------------------------|
| 2000/01 | Jul-Sep | 3,992 | 3,200 | 742 | 50 | 3,904 | 324 | 1,478 | 1,101 | 1,001 | 78 | 12,111 |
| | Oct-Dec | 3,912 | 3,122 | 750 | 40 | 3,696 | 328 | 1,426 | 938 | 1,004 | 229 | 12,340 |
| | Jan-Mar | 3,922 | 3,102 | 769 | 51 | 3,782 | 299 | 1,421 | 1,003 | 1,059 | 141 | 12,481 |
| | Apr-Jun | 3,937 | 3,050 | 840 | 47 | 4,031 | 305 | 1,521 | 1,116 | 1,089 | -85 | 12,396 |
| Total | | 15,763 | 12,474 | 3,101 | 188 | 15,413 | 1,256 | 5,846 | 4,158 | 4,153 | 363 | |
| 2001/02 | Jul-Sep | 4,034 | 3,174 | 815 | 45 | 3,751 | 216 | 1,382 | 1,019 | 1,134 | 284 | 12,680 |
| | Oct-Dec | 3,911 | 3,039 | 846 | 26 | 3,816 | 264 | 1,214 | 1,204 | 1,134 | 102 | 12,782 |
| | Jan-Mar * | 3,803 | 2,839 | 925 | 39 | 3,910 | 268 | 1,394 | 1,136 | 1,112 | -107 | 12,675 |
| | Apr-Jun * | 3,652 | 2,758 | 855 | 39 | 3,761 | 272 | 1,309 | 1,112 | 1,068 | -109 | 12,566 |
| Total | | 15,400 | 11,810 | 3,441 | 149 | 15,238 | 1,020 | 5,299 | 4,471 | 4,448 | 170 | |
| 2002/03 | Jul-Sep * | 3,620 | 2,715 | 866 | 39 | 3,838 | 292 | 1,351 | 1,088 | 1,107 | -218 | 12,348 |
| | Oct-Dec * | 3,605 | 2,746 | 820 | 39 | 3,736 | 273 | 1,264 | 1,080 | 1,119 | -131 | 12,217 |
| | Jan-Mar * | 3,536 | 2,672 | 825 | 39 | 3,776 | 274 | 1,310 | 1,081 | 1,111 | -240 | 11,977 |
| | Apr-Jun * | 3,407 | 2,591 | 777 | 39 | 3,629 | 256 | 1,235 | 1,063 | 1,075 | -222 | 11,755 |
| Total | | 14,168 | 10,724 | 3,288 | 156 | 14,979 | 1,095 | 5,160 | 4,312 | 4,412 | -811 | |

* Projected

Note: Other intake includes transfers direct from court, interstate parole unit (ISPU), and co-ops.
PALS are parolees-at-large with warrant issued (absconded from parole supervision).
Other outgo includes transfers to ISPU, discharges and deaths.

Spring 2002 Projections

Table 15
 Movement of Male Civil Narcotic Addict Outpatient Population
 Fiscal Years 2000/01 through 2002/03

| <u>Fiscal Year</u> | <u>Fiscal Quarter</u> | <u>Total Intake</u> | <u>Released from Institution</u> | <u>Reinstated</u> | <u>Total Outgo</u> | <u>PV-WNT</u> | <u>PV-RTC</u> | <u>RALS</u> | <u>Other Outgo</u> | <u>Gain/Loss</u> | <u>Population End of Qtr</u> |
|--------------------|-----------------------|---------------------|----------------------------------|-------------------|--------------------|---------------|---------------|-------------|--------------------|------------------|------------------------------|
| 2000/01 | Jul-Sep | 393 | 350 | 43 | 368 | 4 | 190 | 41 | 133 | 15 | 1,914 |
| | Oct-Dec | 564 | 533 | 31 | 394 | 11 | 175 | 46 | 162 | 170 | 2,084 |
| | Jan-Mar | 393 | 344 | 49 | 441 | 8 | 205 | 85 | 143 | -45 | 2,039 |
| | Apr-Jun | 547 | 493 | 54 | 583 | 9 | 211 | 75 | 288 | -28 | 2,011 |
| Total | | 1,897 | 1,720 | 177 | 1,786 | 32 | 781 | 247 | 726 | 112 | |
| 2001/02 | Jul-Sep | 468 | 430 | 38 | 429 | 4 | 188 | 86 | 151 | 37 | 2,048 |
| | Oct-Dec | 502 | 454 | 48 | 527 | 7 | 195 | 93 | 232 | -25 | 2,023 |
| | Jan-Mar * | 421 | 400 | 21 | 426 | 6 | 142 | 50 | 228 | -5 | 2,018 |
| | Apr-Jun * | 388 | 367 | 21 | 426 | 6 | 140 | 51 | 229 | -38 | 1,980 |
| Total | | 1,779 | 1,651 | 128 | 1,808 | 23 | 665 | 280 | 840 | -31 | |
| 2002/03 | Jul-Sep * | 386 | 365 | 21 | 419 | 6 | 136 | 48 | 229 | -33 | 1,947 |
| | Oct-Dec * | 386 | 366 | 20 | 405 | 6 | 128 | 45 | 226 | -19 | 1,928 |
| | Jan-Mar * | 384 | 366 | 18 | 405 | 6 | 129 | 45 | 225 | -21 | 1,907 |
| | Apr-Jun * | 378 | 360 | 18 | 393 | 6 | 127 | 45 | 215 | -15 | 1,892 |
| Total | | 1,534 | 1,457 | 77 | 1,622 | 24 | 520 | 183 | 895 | -88 | |

* Projected

Note: RALS are releasees-at-large with warrant issued (absconded from outpatient supervision).
 Other outgo includes discharges and deaths.

Spring 2002 Projections

Table 16
 Movement of Female Civil Narcotic Addict Outpatient Population
 Fiscal Years 2000/01 through 2002/03

| <u>Fiscal Year</u> | <u>Fiscal Quarter</u> | <u>Total Intake</u> | <u>Released from Institution</u> | <u>Reinstated</u> | <u>Total Outgo</u> | <u>PV-WNT</u> | <u>PV-RTC</u> | <u>RALS</u> | <u>Other Outgo</u> | <u>Gain/Loss</u> | <u>Population End of Qtr</u> |
|--------------------|-----------------------|---------------------|----------------------------------|-------------------|--------------------|---------------|---------------|-------------|--------------------|------------------|------------------------------|
| 2000/01 | Jul-Sep | 128 | 121 | 7 | 95 | 1 | 41 | 7 | 46 | 34 | 637 |
| | Oct-Dec | 120 | 114 | 6 | 100 | 1 | 39 | 5 | 55 | 20 | 657 |
| | Jan-Mar | 165 | 154 | 11 | 120 | 1 | 44 | 20 | 55 | 45 | 702 |
| | Apr-Jun | 129 | 121 | 8 | 157 | 1 | 32 | 14 | 110 | -28 | 674 |
| Total | | 542 | 510 | 32 | 472 | 4 | 156 | 46 | 266 | 71 | |
| 2001/02 | Jul-Sep | 133 | 125 | 8 | 98 | 0 | 27 | 12 | 59 | 32 | 706 |
| | Oct-Dec | 118 | 107 | 11 | 109 | 0 | 34 | 16 | 59 | 10 | 716 |
| | Jan-Mar * | 86 | 77 | 9 | 97 | 0 | 34 | 8 | 55 | -11 | 705 |
| | Apr-Jun * | 84 | 75 | 9 | 96 | 0 | 35 | 9 | 52 | -12 | 693 |
| Total | | 421 | 384 | 37 | 400 | 0 | 130 | 45 | 225 | 19 | |
| 2002/03 | Jul-Sep * | 81 | 72 | 9 | 93 | 0 | 33 | 8 | 52 | -12 | 681 |
| | Oct-Dec * | 81 | 72 | 9 | 92 | 0 | 30 | 8 | 54 | -11 | 670 |
| | Jan-Mar * | 79 | 70 | 9 | 91 | 0 | 32 | 8 | 51 | -12 | 658 |
| | Apr-Jun * | 80 | 71 | 9 | 87 | 0 | 30 | 8 | 49 | -7 | 651 |
| Total | | 321 | 285 | 36 | 363 | 0 | 125 | 32 | 206 | -42 | |

* Projected

Note: RALS are releasees-at-large with warrant issued (absconded from outpatient supervision).
 Other outgo includes discharges and deaths.