

*FALL 2000*

*Population Projections*



*2001 - 2006*

*California Department of Corrections*

# CALIFORNIA DEPARTMENT OF CORRECTIONS

**C. A. Terhune**  
*Director*

**TERESA ROCHA**  
*Chief Deputy Director*  
*Support Services*

**STEVEN CAMBRA, JR.**  
*Chief Deputy Director*  
*Field Operations*

**E. A. Mitchell**  
*Interim Assistant Director*  
*Office of Correctional Planning*

**RICHARD S. WELCH**  
*Chief*  
*Offender Information Services Branch*

**GERALD E. BECKETT**  
*Chief*  
*Estimates and Statistical Analysis Section*

**JACK LEONARD**  
*Research Manager I*  
*Population Projections Unit*

---

**Regina Chung**  
*Research Analyst II*

**Jacqui Coder**  
*Research Analyst II*

**Yvonne Jacobs**  
*Secretary*

## **ACKNOWLEDGMENTS**

Although the Estimates and Statistical Analysis Section is responsible for the semiannual publication of the Population Projections, others in the Department of Corrections made significant contributions that are greatly appreciated. Among those involved in the projections were (in alphabetical order) the:

- Board of Prison Terms
- Information Systems Division
- Institutions Division
- Office of Budget Management
- Parole and Community Services Division

	<b>PAGE</b>
<b>I. INTRODUCTION-----</b>	<b>1</b>
<b>A. Factors Affecting Population -----</b>	<b>3</b>
<b>B. Comparison of Fall 2000 with Spring 2000 Projections -----</b>	<b>4</b>
Institution Population,	
June 30, 2000 through June 30, 2006 (Table A) -----	4
Parole and Outpatient Population,	
June 30, 2000 through June 30, 2006 (Table B) -----	5
Total Institution Population, Actual and Projected,	
Fiscal Years 1990-91 through 2005-06 (Figure 1)-----	6
Total Parole and Outpatient Population, California Supervised, Actual and Projected,	
Fiscal Years 1990-91 through 2005-06 (Figure 2)-----	6
<b>II. PREMISES -----</b>	<b>7</b>
Total Felon Admissions, Actual and Projected,	
Fiscal Years 1990-91 through 2005-06 (Figure 3) -----	8
Total Felon Admission Rates, Actual and Projected,	
Fiscal Years 1990-91 through 2005-06 (Figure 4) -----	8
<b>C. Felon Admissions -----</b>	<b>9</b>
Actual Total Felon Admissions To Prison,	
Fiscal Years 1990-91 through 1999-00 (Table C) -----	9
Projected Total Felon Admissions,	
Fiscal Years 2000-01 through 2005-06 (Table D) -----	10
<b>D. Significant Chaptered Legislation and Initiatives -----</b>	<b>10</b>
<b>E. The Work Incentive Program (WIP) -----</b>	<b>11</b>
<b>F. Court Sentences -----</b>	<b>11</b>
Average Sentence and Credits, Felon New Admissions and PV-WNTs,	
Fiscal Years 1992-93 through 1999-00 (Table E) -----	12
<b>G. Placement Need Projections -----</b>	<b>12</b>
<b>H. Parole Violators -----</b>	<b>12</b>
(Continued)	

TABLE OF CONTENTS

---

<b>II. PREMISES (Continued)</b>	<b>PAGE</b>
<b>I. Felon Parole Population -----</b>	<b>13</b>
Male Felon Parole Violator Returns,	
June 1990 through June 2000 (Figure 5)-----	14
Male Felon PV-RTC/PendRev Rates,	
June 1990 through June 2006 (Figure 6)-----	15
Male Felon PV-WNT Rates,	
June 1990 through June 2006 (Figure 7)-----	15
<b>III. FALL 2000 POPULATION PROJECTIONS -----</b>	<b>17</b>
<b>J. Six-Year Population Projections-----</b>	<b>19</b>
Institution Population,	
June 30, 1991 through June 30, 2006 (Table 1)-----	20
Parole and Outpatient Population, Supervised in California	
June 30, 1991 through June 30, 2006 (Table 2)-----	21
<b>K. Two-Year Institution Population and Placement Needs Projections -----</b>	<b>23</b>
Institution Population,	
Fiscal Years 2000-01 and 2001-02 (Table 3)-----	24
Average Daily Institution Population,	
Fiscal Years 2000-01 and 2001-02 (Table 4)-----	25
Projected Placement Needs for Male Felon Institution Population,	
Fiscal Years 2000-01 through 2005-06 (Table 5)-----	26
Projected Placement Needs for Total Male Institution Population,	
Fiscal Years 2000-01 through 2005-06 (Table 6)-----	27
Movement of Male Felon Institution Population,	
Fiscal Years 1999-00 through 2001-02 (Table 7)-----	28
Movement of Female Felon Institution Population,	
Fiscal Years 1999-00 through 2001-02 (Table 8)-----	29
Movement of Male Civil Narcotic Addict Institution Population,	
Fiscal Years 1999-00 through 2001-02 (Table 9)-----	30
Movement of Female Civil Narcotic Addict Institution Population,	
Fiscal Years 1999-00 through 2001-02 (Table 10) -----	31

(Continued)

<b>III. FALL 2000 POPULATION PROJECTIONS (Continued)</b>	<b>PAGE</b>
<b>L. Two-Year Parole and Outpatient Population Projections -----</b>	<b>33</b>
California Supervised Parole and Outpatient Population,	
Fiscal Years 2000-01 and 2001-02 (Table 11) -----	34
Average Daily Parole and Outpatient Population,	
Fiscal Years 2000-01 and 2001-02 (Table 12) -----	35
Movement of Male Felon Parole Population,	
Fiscal Years 1999-00 through 2001-02 (Table 13) -----	36
Movement of Female Felon Parole Population,	
Fiscal Years 1999-00 through 2001-02 (Table 14) -----	37
Movement of Male Civil Narcotic Addict Outpatient Population,	
Fiscal Years 1999-00 through 2001-02 (Table 15) -----	38
Movement of Female Civil Narcotic Addict Outpatient Population,	
Fiscal Years 1999-00 through 2001-02 (Table 16) -----	39

# I. INTRODUCTION

---

## INTRODUCTION

This document contains the California Department of Corrections' (CDC) projections of institution, parole, and outpatient populations for Fiscal Years (FY) 2000-01 through 2005-06. The projections are based upon the most current available data and existing law, including the Gang Violence and Juvenile Crime Prevention Act.

### **A. Factors Affecting Population**

The CDC institution population on June 30, 2000 was 162,000, a decline of 64 in FY 1999-00. This compares to an increase of 3,857 in FY 1998-99. The last time there was a decline in the institution population during a 12-month period ending June 30 was 22 years ago.

Sixty-three percent of the decline in the institution population growth was due to a drop in new admissions from court, as discussed in the Premises section of this document. Parole violators returned to prison with new terms (PV-WNT) made up 24 percent of the total decline in population growth, and parole violators returned to custody (PV-RTC/PendRev) contributed the remaining 13 percent of the decline.



**B. Comparison of Fall 2000 with Spring 2000 Projections**

**1. Institution Population**

In the Spring 2000 forecast, the total institution population was expected to be 161,203 by June 30, 2000, which is 797 lower than the actual population. This difference is due primarily to more new admissions and PV-RTC/PendRev returns than expected, partially offset by more releases to parole than expected.

Table A

Comparison of Fall 2000 with Spring 2000 Projections  
Institution Population<sup>1</sup>  
June 30, 2000 through June 30, 2006

<u>Year End June 30</u>	<u>Fall 2000 Projections</u>	<u>Spring 2000 Projections</u>	<u>Difference</u>
2000	162,000*	161,203	797
2001	163,898	160,060	3,838
2002	166,876	160,804	6,072
2003	170,160	163,248	6,912
2004	175,097	168,008	7,089
2005	180,445	173,000	7,445
2006	185,865	---	---

\*Actual Population

The Fall 2000 projection for the institution population is higher than forecasted in the Spring Projections throughout the projection period. There are several factors involved in this increase. In the first two years, the increase is primarily due to an increase in the rate of parole violators returned to custody and an increase in felon new admissions. By the third year, the increase is primarily due to the impact of Proposition 21, the Gang Violence and Juvenile Crime Prevention Act, which was passed on March 7, 2000. This law is expected to impact the prison population as it expands the definition of serious or violent offenses, potentially resulting in more strikes and the increased penalties under the Three Strikes Law. It also broadens the scope and increases the penalties and enhancements for persons convicted of various felonies in association with any criminal street gang, resulting in additional time in prison. Partially offsetting these increases is a small reduction in the average sentences of new commitments from court. The prison population is expected to be 163,898 by June 30, 2001, which is 3,838 higher than the Spring Projections. On June 30, 2006 the population is expected to be 185,865, an increase of almost 24,000 over the next six years.

<sup>1</sup> The population of the institutions consists of felons, civil narcotic addicts, county diagnostic cases, Youth Authority wards, persons from other states, federal prisoners, and county prisoners held for safekeeping. Felons include individuals under supervision in community-based facilities (in contract and non-contract beds) and State hospitals, as well as those actually in prison.

**2. Parole Population**

In the Spring 2000 Projections the parole population was expected to be 119,197 on June 30, 2000, which is 101 lower than the actual population for that date. The difference is due mainly to an overestimation of parolees-at-large (PAL) and the number of parole discharges, partly offset by an underestimation of parole violators returned to custody.

Table B

Comparison of Fall 2000 with Spring 2000 Projections  
Parole and Outpatient Population  
June 30, 2000 through June 30, 2006

<u>Year End June 30</u>	<u>Fall 2000 Projections</u>	<u>Spring 2000 Projections</u>	<u>Difference</u>
2000	119,298*	119,197	101
2001	122,880	120,299	2,581
2002	125,164	118,825	6,339
2003	126,934	115,559	11,375
2004	127,100	114,602	12,498
2005	128,631	113,892	14,739
2006	128,391	---	---

\*Actual Population

The parole population is anticipated to be higher than projected in the Spring throughout the projection period. This is primarily due to a decrease in the PAL rate and a decrease in the rate felon parolees are discharged from parole. Other factors which will increase the parole population are an increase in felon new admissions and a decrease in time served in the institution. These increases will be partially offset by delay of releases due to the impact of Proposition 21 and an increase in the rate of PV-RTCs. By June 30, 2001 the number of parolees and outpatients supervised in California is projected to be 122,880, an increase of 2,581 from the previous projection. By June 30, 2006 the parole population will be 128,391, an increase of about 9,000 over the next six years.

**3. Other Populations**

The civil addict institution population, which began to decline in FY 1994-95 with the implementation of the Three Strikes Law, increased by 113 in FY 1999-00. The population was 2,311 on June 30, 2000, which was 204 higher than projected. It is now estimated that the civil addict population will be 2,414 on June 30, 2001, which is 462 higher than the Spring Projections. Similarly, the parole outpatient population decreased less than anticipated, dropping to 2,502 by June 30, 2000, which was 118 more than projected in the Spring. The parole outpatient population is expected to be 2,602 by June 30, 2001.

Figures 1 and 2 graphically display the Fall 2000 Projections for the institution and parole and outpatient populations. Figure 1 shows the actual and projected institution population, while Figure 2 shows the actual and projected California Supervised parole and outpatient populations. Both figures are for FY 1990-91 through 2005-06.

Figure 1  
Total Institution Population  
Actual and Projected  
Fiscal Years 1990-91 through 2005-06

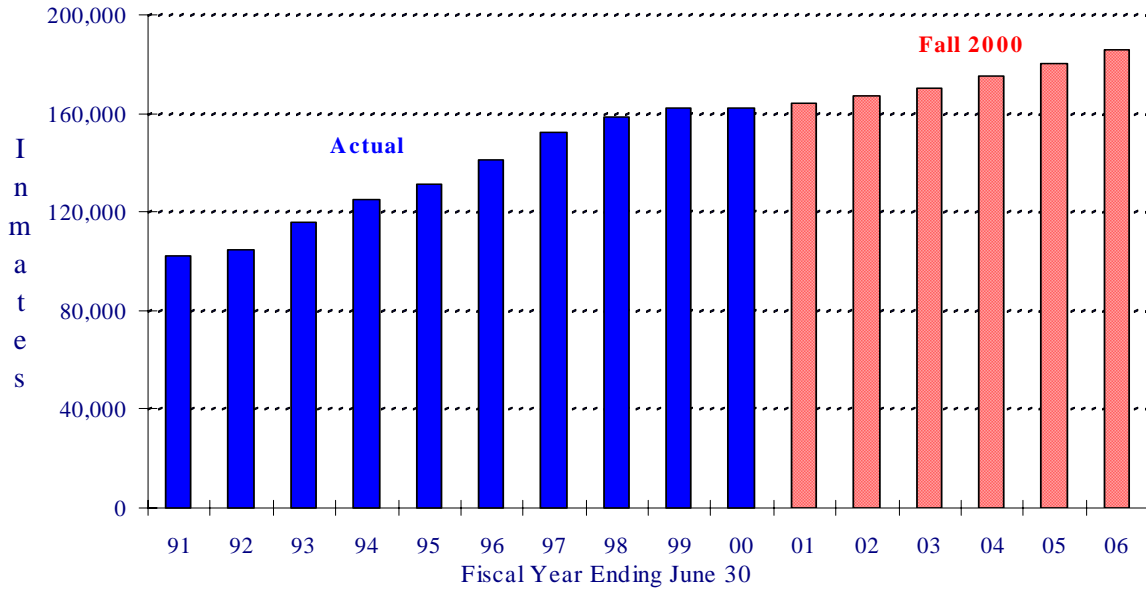
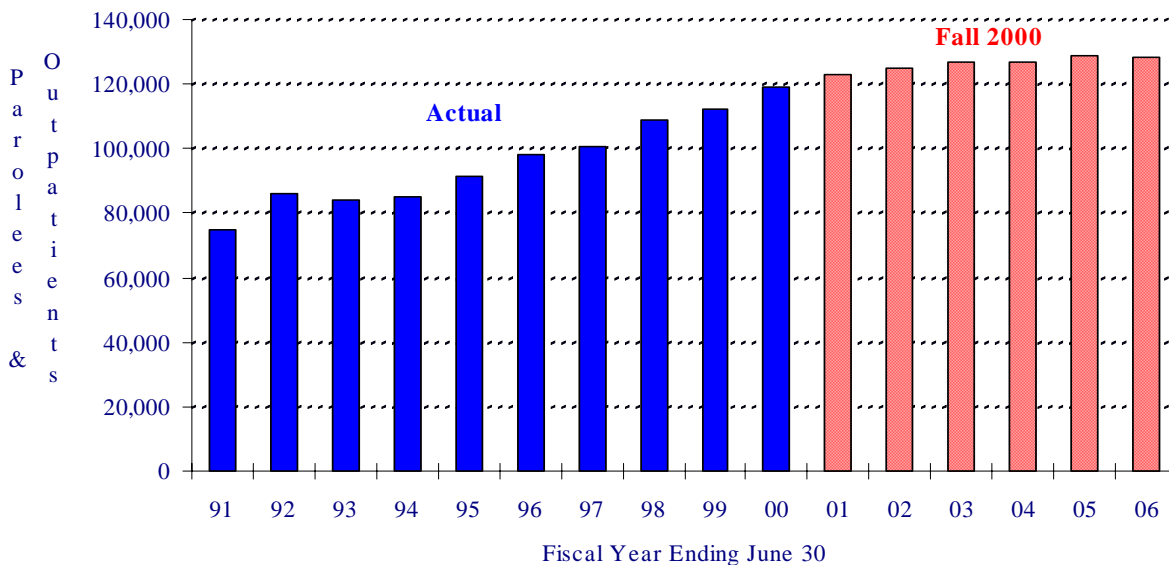


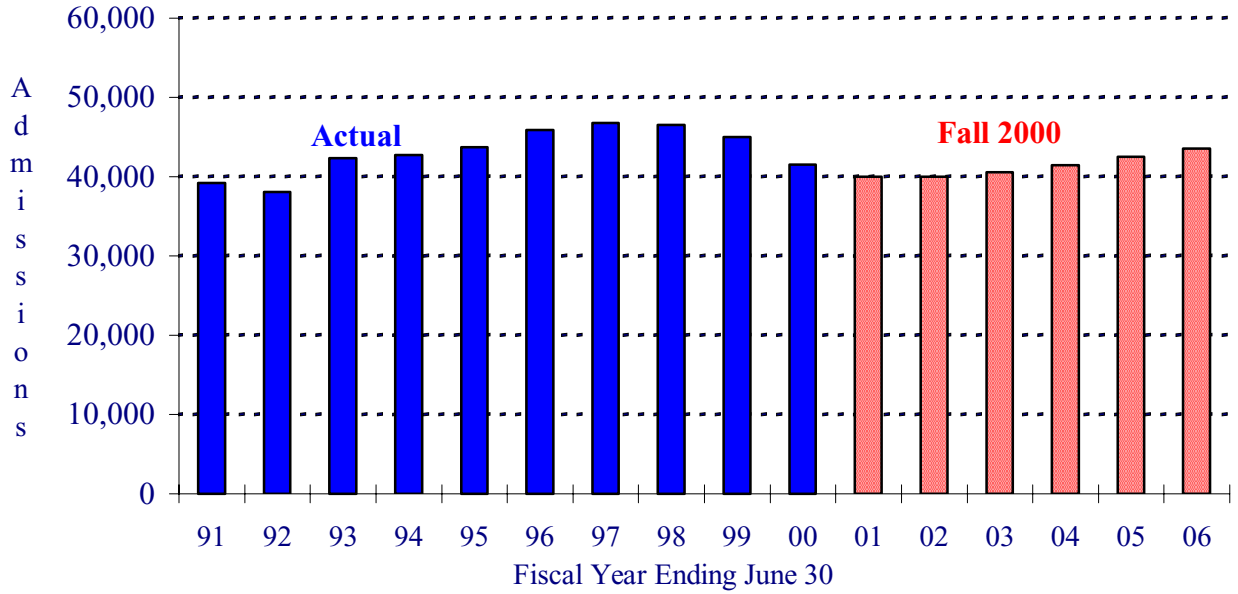
Figure 2  
Total Parole and Outpatient Population  
California Supervised, Actual and Projected  
Fiscal Years 1990-91 through 2005-06



## II. PREMISES

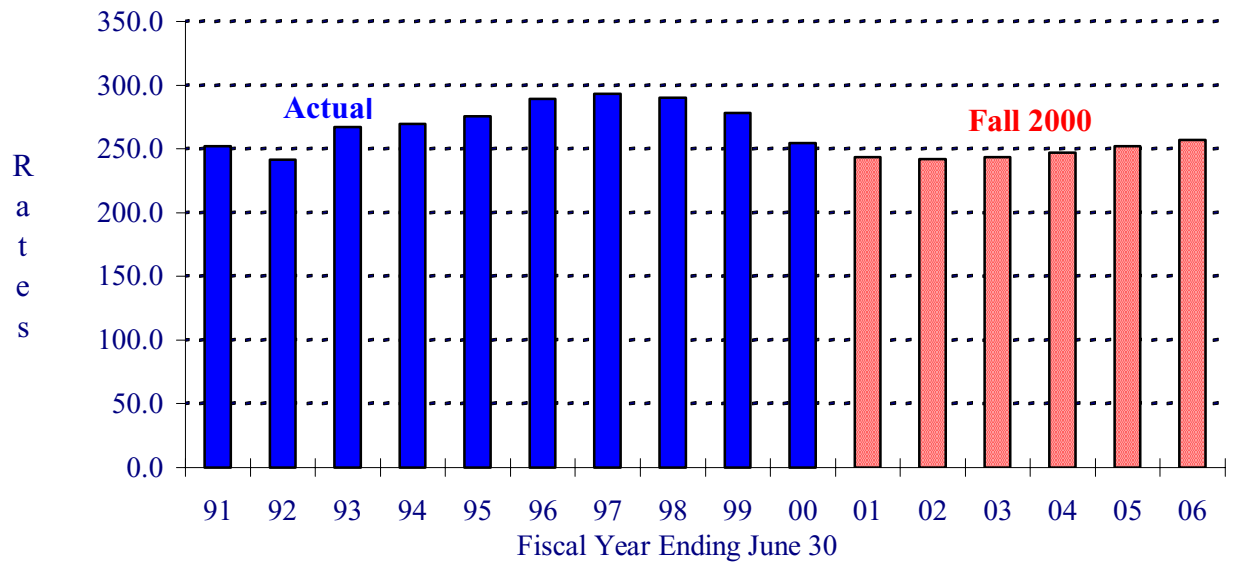
---

Figure 3  
 Total Felon Admissions\*  
 Actual and Projected  
 Fiscal Years 1990-91 through 2005-06



\* Excluding CYA "M" Cases

Figure 4  
 Total Felon Admission Rates  
 Actual and Projected  
 Fiscal Years 1990-91 through 2005-06



**PREMISES**

Figures 3 and 4 on the preceding page display the Fall 2000 Projections for felon admissions. Figure 3 shows the actual and projected felon admissions, while Figure 4 shows the actual and projected felon admission rates (per 100,000 California residents aged 18-49). Both figures are for FY 1990-91 through 2005-06.

**C. Felon Admissions**

Table C, below, summarizes actual felon admissions to state prison from FY 1990-91 through FY 1999-00, while Table D displays the projected admissions from FY 2000-01 through FY 2005-06. Consistent with past practice, admission rates displayed in Tables C and D are expressed as the number of felon admissions to prison from court per 100,000 California residents, aged 18-49.

Table C

Actual Total Felon Admissions To Prison  
Fiscal Years 1990-91 through 1999-00

<u>Fiscal Year</u>	<u>Number of CDC Felon Admissions<sup>1</sup></u>	<u>State Population Aged 18-49 (In Thousands)</u>	<u>Admission Rate<sup>2</sup></u>
1990-91	39,175	15,532.3	252.2
1991-92	38,037	15,737.4	241.7
1992-93	42,339	15,846.2	267.2
1993-94	42,713	15,850.2	269.5
1994-95	43,707	15,844.2	275.9
1995-96	45,876	15,860.8	289.2
1996-97	46,750	15,930.4	293.5
1997-98	46,512	16,039.1	290.0
1998-99	44,984	16,170.3	278.2
1999-00	41,493	16,303.3	254.5

<sup>1</sup> Not including CYA "M" cases, other state/federal admissions, or direct admissions to parole

<sup>2</sup> Number of CDC felon admissions per 100,000 California state residents, aged 18-49

There has been an absolute decline in admissions for the last three fiscal years. The total admissions for FY 1999-00 were 41,493, down 7.8 percent from FY 1998-99. This continued decline in admissions has contributed significantly to a decline in total institution population, the first such decline in 22 years.

In the last six months (January-June 2000), total admissions were 20,675. This is 6.5 percent lower than admissions for the same time period one year ago, but 286 higher than projected in Spring 2000.

As shown in Table D, there is very little change in the Fall 2000 felon admissions projection when compared to the Spring Projections. Projected admissions are relatively flat for the first three years, then gradually increase over the next three years.

Admissions are projected based on current trend, estimated impact of legislation, seasonality, and projected state population aged 18-49 years old.

Table D

Projected Total Felon Admissions<sup>1</sup>  
(Without Incapacitation Adjustment)  
Fiscal Years 2000-01 through 2005-06

<u>Fiscal Year</u>	<u>Fall 2000</u>	<u>Spring 2000</u>	<u>Difference</u>	<u>Fall 2000 Rates</u>
2000-01	40,023	39,643	380	243.7
2001-02	40,032	39,535	497	241.9
2002-03	40,603	40,293	310	243.5
2003-04	41,481	41,482	-1	247.1
2004-05	42,493	42,847	-354	251.9
2005-06	43,515	---	---	257.2

<sup>1</sup>Not including CYA 'M' cases and other state/federal admissions, or direct admissions to parole

**D. Significant Chaptered Legislation and Initiatives**

Six legislative bills were chaptered since the Spring 2000 Projections, three of which will have either negligible or no direct impact on the state prison system. The remaining three are listed below. However, the impact of the length of confinement could not be estimated for these bills, and will not be included in the Fall 2000 Projections. The estimated impact of Proposition 21 is described in Section B.1.

1. Chapter 31, Statutes of 2000 (AB 809, Lowenthal), effective June 8, 2000, creates a new alternate felony misdemeanor for persons who use a false or fictitious name to knowingly make any false statements, or conceal any material fact on a refund claim for the Department of Motor Vehicles' smog impact fee. This law will result in some persons new to state prison.
2. Chapter 153, Statutes of 2000 (AB 1988, Strickland), effective January 1, 2001, provides that any inmate released on parole for a conviction of lewd act with child or continuous sexual abuse of a child, shall not reside, for the duration of his or her period of parole, within one-quarter mile of any school, as specified. This law will result in more parole periods revoked and parolees returned to prison.
3. Chapter 97, Statutes of 2000 (AB 2063, Zettel), effective January 1, 2001, allows evidence of past abuse of an elder or dependent adult to be offered in a criminal trial to prove the

defendant's conduct on a specific occasion. This law will result in more convictions and some persons new to state prison.

Below is a listing of legislation included in the Spring 2000 Projections:

1. Statutes of 1999: Chapter 561 (AB 59, Cedillo); 563 (AB 140, Hertzberg); 128 (AB 202, Knox); 566 (AB 208, Knox); 569 (AB 313, Zettel); 298 (AB 381, Cardoza); 571 (AB 491, Scott); 826 (AB 510, Wright); 975 (AB 924, Committee on Public Safety); 615 (AB 1127, Steinberg); 576 (AB 1193, Leonard); 706 (AB 1236, Battin); 248 (SB 15, Polanco); 129 (SB 23, Perata); 265 (SB 103, Johannessen); 662 (SB 218, Solis); 996 (SB 334, Alpert & Pacheco); 901 (SB 341, Figueroa); 932 (SB 433, Johnson); 660 (SB 563, Speier); 853 (SB 832, Committee on Public Safety); 940 (SB 1162, Burton); 854 (SB 1282, Lewis).

A description of the above legislation may be found in the Spring 2000 Projections publication.

**E. The Work Incentive Program (WIP)**

This program allows eligible inmates to earn up to a six-month reduction per year in sentence length. The WIP applies to all felons who committed their offenses on or after January 1, 1983 and to those felons who committed their offenses before January 1, 1983 who chose to opt in. Approximately 73 percent of the June 30, 2000 eligible population were earning one-half sentence reduction, and participation is expected to continue at that level throughout the projection period. The Three Strikes Law (AB 971) limits credit-earning to 20 percent for affected inmates. AB 2716 also limits persons who have been convicted of any violent felony to no more than 15 percent sentence reduction.

**F. Court Sentences**

As shown in Table E, the mean sentence for felons steadily increased in the first few years after implementation of the Three Strikes Law in March 1994, but has stabilized at about 54 months over the last three years. The average work incentive credits steadily decreased since the Three Strikes Law, but has stabilized at about 12 months in the last three years.



Table E

Average Sentence and Credits  
 In Months  
 Felon New Admissions and PV-WNTs  
 Fiscal Years 1992-93 through 1999-00

<u>Fiscal Year</u>	<u>Sentence<sup>1</sup></u>	<u>Preconfinement Credits</u>	<u>WIP Credits<sup>2</sup></u>	<u>Time to Serve</u>
1992-93	47.9	6.6	17.7	23.6
1993-94	47.5	6.4	17.6	23.5
1994-95	50.9	6.9	15.0	29.0
1995-96	54.0	7.1	12.9	34.0
1996-97	56.0	7.1	12.5	36.4
1997-98	54.4	6.7	12.4	35.3
1998-99	54.6	6.7	12.4	35.5
1999-00	54.3	6.7	12.3	35.3

<sup>1</sup> Includes third-strike and other life commitments

<sup>2</sup> Work Incentive Program credits based on eligibility

**G. Placement Need Projections**

As in the Spring 2000 Projections, projections of institution bed needs by level consider both inmate classification score level and administrative determinants, such as institutional security and public safety, as specified in Section 62010 of the California Department of Corrections' Operations Manual. It is assumed that the male felon reception center population will fluctuate proportionately with the changes in male felon intake. Special housing projections assume a constant proportion of the number of inmates of each classification level in each special housing category over the projection period. Security Housing Unit (SHU) projections assume a cap of 3,000 male felon beds.

**H. Parole Violators**

For the six-month period January-June 2000, there were 33,505 male felon parole violators (PV-RTCs and PendRevs) returned to custody, 1,166 more than projected in Spring 2000. The corresponding return rate was 55.7, 2.3 higher than projected. It is still anticipated that the impact of new drug and mental health programs will cause the return rate to decrease, but at a slower pace than projected in the Spring. The Fall 2000 Projections assume that the male felon PV-RTC rate will be about 4 points higher by FY 2001-02 compared to the Spring Projections.

There were 7,461 male felon PV-WNTs for the January-June 2000 period, just 8 more than projected in Spring 2000. The corresponding male felon PV-WNT rate was 12.4, virtually

the same as projected. The Fall 2000 Projections assume the PV-WNT rate will be the same as projected in the Spring.

The graphs on the following pages illustrate actual and projected parole return numbers and rates. Figure 5 displays the actual number of male felon parole violator returns by quarter since June 1990. Figure 6 shows the male felon PV-RTC/PendRev rates by quarter from June 1990 to June 2006, while Figure 7 tracks the male felon PV-WNT rates.

## **I. Felon Parole Population**

On June 30, 2000 the felon parole population was 115,486, which is only 7 lower than projected in Spring 2000. Between December 31, 1999 and June 30, 2000, this population increased by 1,766.

For the six-month period January-June 2000, there were 13,805 male felon parolees suspended to PAL status, 1,005 less than projected in Spring 2000. The corresponding PAL rate was 26.9, 1.9 lower than projected. The Fall 2000 Projections assume that the male felon PAL rate will be about 6 points lower by FY 2001-02 compared to the Spring Projections.

There were 13,843 male felon parolees discharged from parole over the last six months. This was 771 less than projected in Spring 2000. The corresponding discharge rate was 23.3, 1.2 lower than projected. The Fall 2000 Projections assume that the male felon discharge rate will be almost 4 points lower by FY 2001-02 compared to the Spring Projections.

Figure 5  
 Male Felon Parole Violator Returns  
 June 1990 through June 2000

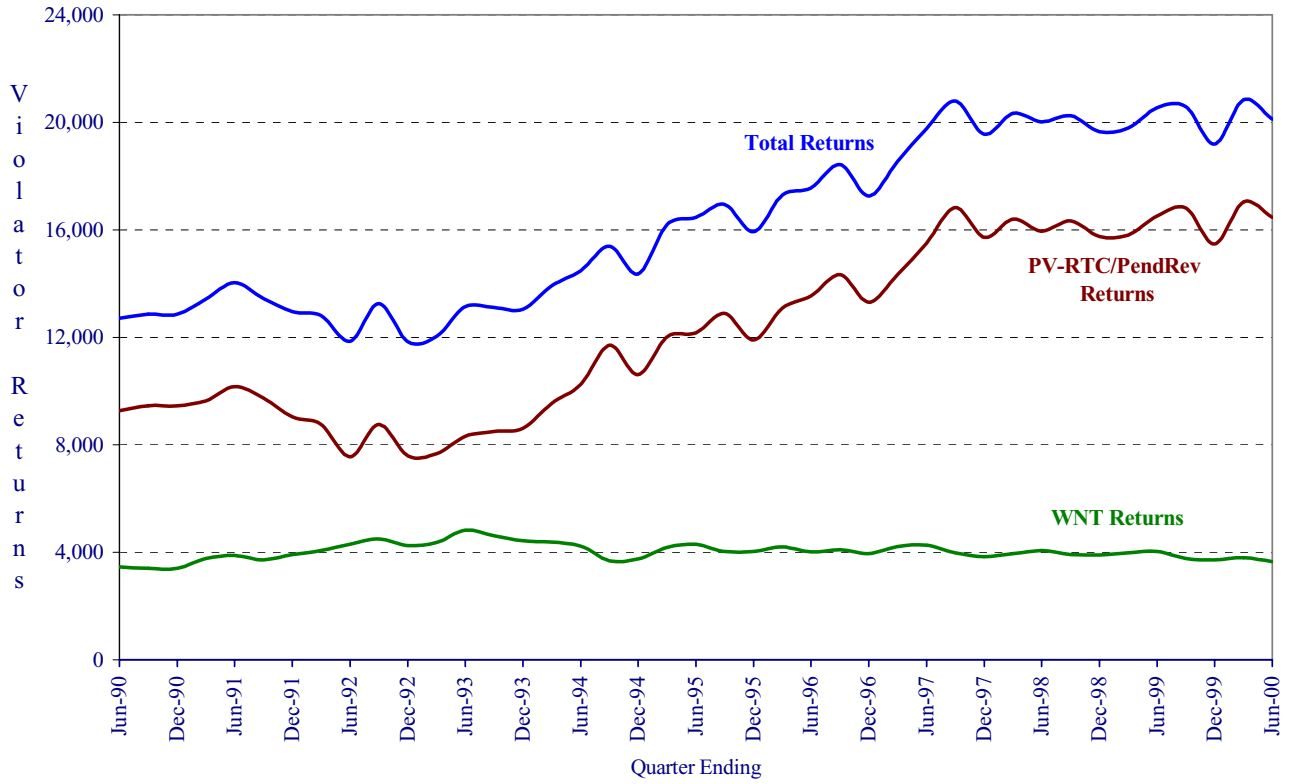


Figure 6  
Male Felon PV-RTC/PendRev Rates  
June 1990 through June 2006

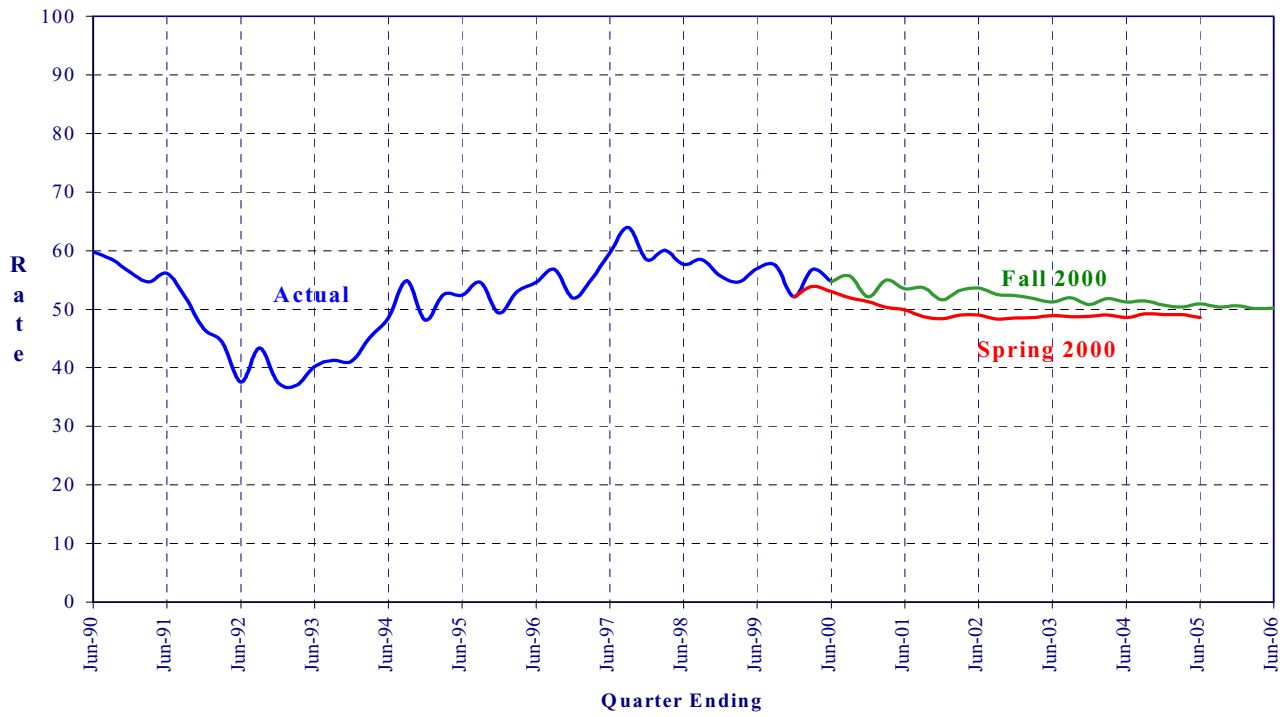
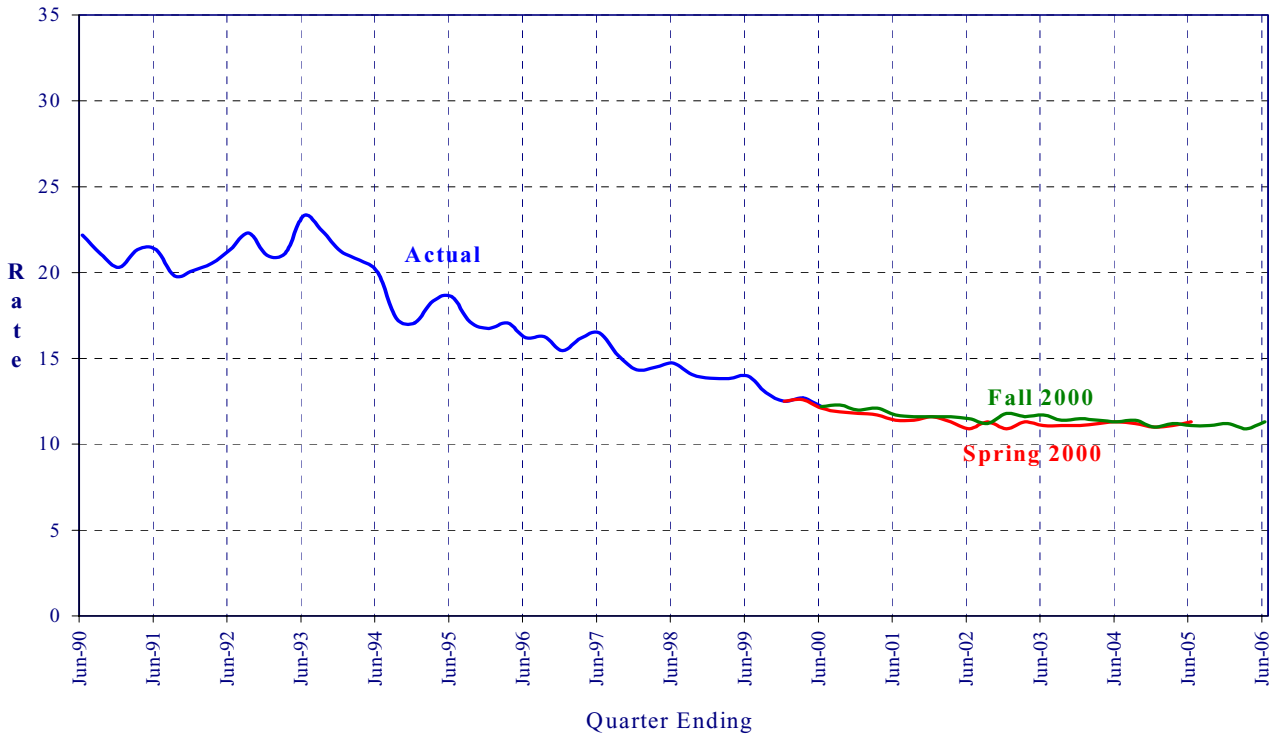


Figure 7  
Male Felon PV-WNT Rates  
June 1990 through June 2006



## **III. FALL 2000 POPULATION PROJECTIONS**

---

The Fall 2000 Projections are summarized in Tables 1 and 2, and are presented in greater detail in Tables 3 through 16. Tables 3 and 4 present the quarterly institution populations, while Tables 5 and 6 present detailed projections by inmate placement needs. Tables 7 through 10 project the movement of institution populations (including civil narcotic addicts), and Tables 11 through 16 present detailed projections of the parole and outpatient population.

# **J. Six-Year Population Projections**

---

**Tables 1-2**

**Fiscal Years 2000-01 through 2005-06**

Fall 2000 Projections

Table 1  
 Institution Population  
 June 30, 1991 through June 30, 2006

<u>As of June 30</u>	<u>Total</u>	<u>Total Males</u>	<u>Male Felons</u>	<u>Male Addicts</u>	<u>Male Others</u>	<u>Total Females</u>	<u>Female Felons</u>	<u>Female Addicts</u>	<u>Female Others</u>
Actual									
1991	101,995	95,339	92,615	2,280	444	6,656	5,999	615	42
1992	104,352	98,008	94,777	2,477	754	6,344	5,654	628	62
1993	115,534	108,302	104,768	3,067	467	7,232	6,450	732	50
1994	124,813	116,879	113,238	3,189	452	7,934	7,144	750	40
1995	131,342	122,514	119,063	3,114	337	8,828	8,026	766	36
1996	141,017	131,273	128,497	2,465	311	9,744	8,975	736	33
1997	152,506	141,669	139,239	2,163	267	10,837	10,188	583	66
1998	158,207	147,001	144,805	1,924	272	11,206	10,594	562	50
1999	162,064	150,581	148,621	1,703	257	11,483	10,949	495	39
2000	162,000	150,793	148,754	1,776	263	11,207	10,620	535	52
Projected									
2001	163,898	152,694	150,580	1,851	263	11,204	10,597	563	44
2002	166,876	155,265	153,151	1,851	263	11,611	11,002	565	44
2003	170,160	158,154	156,040	1,851	263	12,006	11,397	565	44
2004	175,097	162,588	160,474	1,851	263	12,509	11,900	565	44
2005	180,445	167,550	165,436	1,851	263	12,895	12,286	565	44
2006	185,865	172,360	170,246	1,851	263	13,505	12,896	565	44

Note: Others include county diagnostic cases, persons from other states, federal prisoners, county safekeepers, and California Youth Authority (CYA) wards.

Fall 2000 Projections

Table 2  
 Parole and Outpatient Population  
 Supervised in California  
 June 30, 1991 through June 30, 2006

<u>As of June 30</u>	<u>Total</u>	<u>Total Males</u>	<u>Male Felons</u>	<u>Male Addicts</u>	<u>Male Others</u>	<u>Total Females</u>	<u>Female Felons</u>	<u>Female Addicts</u>	<u>Female Others</u>
Actual									
1991	74,997	67,657	63,268	2,210	2,179	7,340	6,414	734	192
1992	85,835	77,181	72,567	2,570	2,044	8,654	7,642	825	187
1993	83,887	75,735	70,809	2,839	2,087	8,152	7,024	941	187
1994	85,197	77,014	72,057	3,093	1,864	8,183	7,037	980	166
1995	91,456	83,048	78,450	3,346	1,252	8,408	7,325	960	123
1996	98,013	88,710	84,227	3,172	1,311	9,303	8,311	870	122
1997	100,828	91,002	87,202	2,684	1,116	9,826	8,817	880	129
1998	108,750	97,587	94,158	2,313	1,116	11,163	10,256	751	156
1999	112,494	100,716	97,593	1,954	1,169	11,778	10,944	678	156
2000	119,298	106,505	103,453	1,899	1,153	12,793	12,033	603	157
Projected									
2001	122,880	109,641	106,516	1,972	1,153	13,239	12,452	630	157
2002	125,164	111,799	108,674	1,972	1,153	13,365	12,576	632	157
2003	126,934	113,331	110,206	1,972	1,153	13,603	12,814	632	157
2004	127,100	113,301	110,176	1,972	1,153	13,799	13,010	632	157
2005	128,631	114,483	111,358	1,972	1,153	14,148	13,359	632	157
2006	128,391	113,992	110,867	1,972	1,153	14,399	13,610	632	157

Note: Others include co-ops and other state/federal parolees.



## **K. Two-Year Institution Population and Placement Needs Projections**

---

**Tables 3-10**

**Detail Fiscal Years 2000-01 and 2001-02**

**Fiscal Years 2000-01 through 2005-06 (Tables 5 & 6)**

Fall 2000 Projections

Table 3  
 Institution Population  
 Fiscal Years 2000/01 through 2001/02

	Actual June 30 2000	Sep 30 2000	Dec 31 2000	Mar 31 2001	Jun 30 2001	Sep 30 2001	Dec 31 2001	Mar 31 2002	Jun 30 2002
Total Population	162,000	162,844	162,153	163,469	163,898	164,516	164,296	165,436	166,876
Men (Inc. CCC)	150,793	151,644	151,005	152,207	152,694	153,230	152,958	153,942	155,265
Women (Inc. CCC)	11,207	11,200	11,148	11,262	11,204	11,286	11,338	11,494	11,611
Total (Exc. CCC)	153,752	154,898	154,205	154,991	155,405	155,988	155,768	156,908	158,348
Men	143,002	144,124	143,485	144,215	144,687	145,223	144,951	145,935	147,258
Felons	141,366	142,321	141,671	142,401	142,873	143,409	143,137	144,121	145,444
Civil Narcotic Addicts	1,373	1,540	1,551	1,551	1,551	1,551	1,551	1,551	1,551
Others 1	263	263	263	263	263	263	263	263	263
Women	10,750	10,774	10,720	10,776	10,718	10,765	10,817	10,973	11,090
Felons	10,163	10,179	10,121	10,173	10,111	10,156	10,208	10,364	10,481
Civil Narcotic Addicts	535	551	555	559	563	565	565	565	565
Others 1	52	44	44	44	44	44	44	44	44
Community Correctional Centers 2	8,248	7,946	7,948	8,478	8,493	8,528	8,528	8,528	8,528
Total Males	7,791	7,520	7,520	7,992	8,007	8,007	8,007	8,007	8,007
Male Felons	7,388	7,220	7,220	7,692	7,707	7,707	7,707	7,707	7,707
Male Civil Narcotic Addicts	403	300	300	300	300	300	300	300	300
Female Felons	457	426	428	486	486	521	521	521	521

1 Others include county diagnostic cases, other state/federal prisoners, safekeepers, and CYA wards.

2 Community Correctional Centers data are based on the bed activation schedule provided by the Parole and Community Services Division.

Fall 2000 Projections

Table 4  
 Average Daily Institution Population  
 Fiscal Years 2000/01 through 2001/02

	FY 2000/01 Avg	Sep 30 2000	Dec 31 2000	Mar 31 2001	Jun 30 2001	FY 2001/02 Avg	Sep 30 2001	Dec 31 2001	Mar 31 2002	Jun 30 2002
Total Population	162,684	162,125	162,531	162,574	163,505	164,826	164,078	164,354	164,754	166,119
Men (Inc. CCC)	151,531	150,995	151,374	151,437	152,318	153,457	152,847	153,049	153,345	154,585
Women (Inc. CCC)	11,153	11,130	11,157	11,138	11,187	11,370	11,231	11,305	11,408	11,535
Total (Exc. CCC)	154,576	154,163	154,585	154,530	155,024	156,300	155,556	155,826	156,226	157,591
Men	143,869	143,465	143,854	143,835	144,323	145,450	144,840	145,042	145,338	146,578
Felons	142,069	141,704	142,043	142,021	142,509	143,636	143,026	143,228	143,524	144,764
Civil Narcotic Addicts	1,537	1,497	1,548	1,551	1,551	1,551	1,551	1,551	1,551	1,551
Others 1	263	263	263	263	263	263	263	263	263	263
Women	10,707	10,699	10,731	10,695	10,701	10,850	10,716	10,784	10,887	11,014
Felons	10,107	10,106	10,133	10,093	10,095	10,241	10,107	10,175	10,278	10,405
Civil Narcotic Addicts	556	548	554	558	562	565	565	565	565	565
Others 1	44	45	44	44	44	44	44	44	44	44
Community Correctional Centers 2	8,109	7,962	7,946	8,045	8,481	8,527	8,522	8,528	8,528	8,528
Total Males	7,662	7,530	7,520	7,601	7,995	8,007	8,007	8,007	8,007	8,007
Male Felons	7,357	7,213	7,220	7,301	7,695	7,707	7,707	7,707	7,707	7,707
Male Civil Narcotic Addicts	305	318	300	300	300	300	300	300	300	300
Female Felons	447	431	426	443	486	520	515	521	521	521

1 Others include county diagnostic cases, other state/federal prisoners, safekeepers, and CYA wards.

2 Community Correctional Centers data are based on the bed activation schedule provided by the Parole and Community Services Division.

Fall 2000 Projections

Table 5  
 Projected Placement Needs for Male Felon Institution Population  
 Fiscal Years 2000/01 through 2005/06

<u>Fiscal Year</u>	<u>Fiscal Quarter</u>	<u>Reception Center</u>	<u>Level I</u>	<u>Level II</u>	<u>Level III</u>	<u>Level IV</u>	<u>Special PHU</u>	<u>Housing SHU</u>	<u>Total Housing</u>	<u>Grand Total</u>
2000/01	September 30	21,820	33,756	32,835	33,555	24,985	30	2,560	2,590	149,541
	December 31	20,930	33,636	32,830	33,645	25,240	30	2,580	2,610	148,891
	March 31	21,820	33,618	32,885	33,685	25,455	30	2,600	2,630	150,093
	June 30	21,590	33,695	33,045	33,870	25,715	30	2,635	2,665	150,580
2001/02	September 30	21,545	33,756	33,165	34,015	25,950	30	2,655	2,685	151,116
	December 31	21,080	33,674	33,125	34,100	26,160	30	2,675	2,705	150,844
	March 31	21,605	33,713	33,205	34,210	26,370	30	2,695	2,725	151,828
	June 30	21,845	33,996	33,495	34,450	26,615	30	2,720	2,750	153,151
2002/03	June 30	21,465	34,680	34,220	35,295	27,540	30	2,810	2,840	156,040
2003/04	June 30	21,470	35,884	35,340	36,350	28,495	30	2,905	2,935	160,474
2004/05	June 30	21,670	37,271	36,550	37,470	29,445	30	3,000	3,030	165,436
2005/06	June 30	21,585	38,696	37,800	38,640	30,490	35	3,000	3,035	170,246

Note: These estimates assume that the male reception center population will increase proportionately with the increase in male felon intake.

Fall 2000 Projections

Table 6  
 Projected Placement Needs for Total Male Institution Population  
 Fiscal Years 2000/01 through 2005/06

<u>Fiscal Year</u>	<u>Fiscal Quarter</u>	<u>Reception Center</u>	<u>Level I</u>	<u>Level II</u>	<u>Level III</u>	<u>Level IV</u>	<u>Special PHU</u>	<u>Housing SHU</u>	<u>Total Housing</u>	<u>Grand Total</u>
2000/01	September 30	22,083	33,756	34,675	33,555	24,985	30	2,560	2,590	151,644
	December 31	21,193	33,636	34,681	33,645	25,240	30	2,580	2,610	151,005
	March 31	22,083	33,618	34,736	33,685	25,455	30	2,600	2,630	152,207
	June 30	21,853	33,695	34,896	33,870	25,715	30	2,635	2,665	152,694
2001/02	September 30	21,808	33,756	35,016	34,015	25,950	30	2,655	2,685	153,230
	December 31	21,343	33,674	34,976	34,100	26,160	30	2,675	2,705	152,958
	March 31	21,868	33,713	35,056	34,210	26,370	30	2,695	2,725	153,942
	June 30	22,108	33,996	35,346	34,450	26,615	30	2,720	2,750	155,265
2002/03	June 30	21,728	34,680	36,071	35,295	27,540	30	2,810	2,840	158,154
2003/04	June 30	21,733	35,884	37,191	36,350	28,495	30	2,905	2,935	162,588
2004/05	June 30	21,933	37,271	38,401	37,470	29,445	30	3,000	3,030	167,550
2005/06	June 30	21,848	38,696	39,651	38,640	30,490	35	3,000	3,035	172,360

Note: These estimates assume that the male reception center population will increase proportionately with the increase in male felon intake. Reception center includes others as defined on Table 1. Level II includes civil narcotic addicts.

Population Projections Unit  
 Estimates and Statistical Analysis Section  
 Offender Information Services Branch

Department of Corrections  
 State of California  
 10/05/2000

Fall 2000 Projections

Table 7  
 Movement of Male Felon Institution Population  
 Fiscal Years 1999/00 through 2001/02

Fiscal Year	Fiscal Quarter		Total Intake	From Court	PV-WNT	PV-RTC	Other Intake	Total Outgo	First Parole	PV-RTC Parole	Other Outgo	Gain/Loss	Population End of Qtr
1999/00	Jul-Sep		30,111	9,499	3,770	16,811	31	29,599	13,163	15,630	806	500	149,121
	Oct-Dec		28,198	8,980	3,714	15,480	24	29,881	13,502	15,553	826	-1,566	147,555
	Jan-Mar		30,023	9,139	3,813	17,039	32	28,997	13,003	15,132	862	863	148,418
	Apr-Jun		29,449	9,232	3,672	16,508	37	29,137	13,040	15,247	850	336	148,754
	Total		117,781	36,850	14,969	65,838	124	117,614	52,708	61,562	3,344	133	
2000/01	Jul-Sep	*	29,549	8,919	3,723	16,869	38	28,762	12,475	15,531	756	787	149,541
	Oct-Dec	*	28,345	8,718	3,676	15,930	21	28,995	12,666	15,733	596	-650	148,891
	Jan-Mar	*	29,553	8,832	3,720	16,978	23	28,351	12,516	15,357	478	1,202	150,093
	Apr-Jun	*	29,240	9,032	3,612	16,572	24	28,753	12,383	15,889	481	487	150,580
	Total		116,687	35,501	14,731	66,349	106	114,861	50,040	62,510	2,311	1,826	
2001/02	Jul-Sep	*	29,179	8,821	3,603	16,729	26	28,643	11,973	16,153	517	536	151,116
	Oct-Dec	*	28,546	8,695	3,644	16,186	21	28,818	11,967	16,313	538	-272	150,844
	Jan-Mar	*	29,262	8,825	3,649	16,764	24	28,278	11,962	15,804	512	984	151,828
	Apr-Jun	*	29,586	9,010	3,630	16,919	27	28,263	11,963	15,723	577	1,323	153,151
	Total		116,573	35,351	14,526	66,598	98	114,002	47,865	63,993	2,144	2,571	

\* Projected

Note: Other intake includes CYA 'M' cases and transfers from other states.  
 Other outgo includes discharges and deaths.

Fall 2000 Projections

Table 8  
 Movement of Female Felon Institution Population  
 Fiscal Years 1999/00 through 2001/02

<u>Fiscal Year</u>	<u>Fiscal Quarter</u>		<u>Total Intake</u>	<u>From Court</u>	<u>PV-WNT</u>	<u>PV-RTC</u>	<u>Total Outgo</u>	<u>First Parole</u>	<u>PV-RTC Parole</u>	<u>Other Outgo</u>	<u>Gain/Loss</u>	<u>Population End of Qtr</u>
1999/00	Jul-Sep		3,225	1,153	391	1,681	3,322	1,664	1,603	55	-100	10,849
	Oct-Dec		3,099	1,194	394	1,511	3,313	1,645	1,603	65	-196	10,653
	Jan-Mar		3,290	1,164	360	1,766	3,193	1,573	1,564	56	92	10,745
	Apr-Jun		3,071	1,135	379	1,557	3,174	1,580	1,536	58	-125	10,620
	Total		12,685	4,646	1,524	6,515	13,002	6,462	6,306	234	-329	
2000/01	Jul-Sep	*	3,152	1,163	368	1,621	3,167	1,574	1,550	43	-15	10,605
	Oct-Dec	*	3,143	1,150	410	1,583	3,199	1,551	1,606	42	-56	10,549
	Jan-Mar	*	3,199	1,135	421	1,643	3,089	1,537	1,514	38	110	10,659
	Apr-Jun	*	3,099	1,088	429	1,582	3,161	1,548	1,582	31	-62	10,597
	Total		12,593	4,536	1,628	6,429	12,616	6,210	6,252	154	-23	
2001/02	Jul-Sep	*	3,168	1,156	396	1,616	3,088	1,499	1,542	47	80	10,677
	Oct-Dec	*	3,136	1,147	395	1,594	3,084	1,464	1,582	38	52	10,729
	Jan-Mar	*	3,190	1,175	415	1,600	3,034	1,469	1,532	33	156	10,885
	Apr-Jun	*	3,203	1,205	399	1,599	3,086	1,476	1,573	37	117	11,002
	Total		12,697	4,683	1,605	6,409	12,292	5,908	6,229	155	405	

\* Projected

Note: Other outgo includes discharges and deaths.

Fall 2000 Projections

Table 9  
 Movement of Male Civil Narcotic Addict Institution Population  
 Fiscal Years 1999/00 through 2001/02

<u>Fiscal Year</u>	<u>Fiscal Quarter</u>		<u>Total Intake</u>	<u>From Court</u>	<u>Outpatients Returned</u>	<u>Total Outgo</u>	<u>Outpatient Status</u>	<u>Other Outgo</u>	<u>Gain/Loss</u>	<u>Population End of Qtr</u>
1999/00	Jul-Sep		509	244	265	583	486	97	-83	1,620
	Oct-Dec		500	258	242	436	355	81	76	1,696
	Jan-Mar		538	290	248	476	416	60	43	1,739
	Apr-Jun		524	301	223	473	410	63	37	1,776
	Total		2,071	1,093	978	1,968	1,667	301	73	
2000/01	Jul-Sep	*	555	306	249	491	419	72	64	1,840
	Oct-Dec	*	511	270	241	500	374	126	11	1,851
	Jan-Mar	*	501	264	237	501	363	138	0	1,851
	Apr-Jun	*	501	264	237	501	363	138	0	1,851
	Total		2,068	1,104	964	1,993	1,519	474	75	
2001/02	Jul-Sep	*	501	264	237	501	363	138	0	1,851
	Oct-Dec	*	501	264	237	501	363	138	0	1,851
	Jan-Mar	*	501	264	237	501	363	138	0	1,851
	Apr-Jun	*	501	264	237	501	363	138	0	1,851
	Total		2,004	1,056	948	2,004	1,452	552	0	

\* Projected

Note: Other outgo includes discharges and deaths.



Fall 2000 Projections

Table 10  
 Movement of Female Civil Narcotic Addict Institution Population  
 Fiscal Years 1999/00 through 2001/02

<u>Fiscal Year</u>	<u>Fiscal Quarter</u>		<u>Total Intake</u>	<u>From Court</u>	<u>Outpatients Returned</u>	<u>Total Outgo</u>	<u>Outpatient Status</u>	<u>Other Outgo</u>	<u>Gain/Loss</u>	<u>Population End of Qtr</u>
1999/00	Jul-Sep		159	96	63	168	144	24	-15	480
	Oct-Dec		102	57	45	114	91	23	-8	472
	Jan-Mar		154	86	68	106	84	22	49	521
	Apr-Jun		128	84	44	108	89	19	14	535
	Total		543	323	220	496	408	88	40	
2000/01	Jul-Sep	*	144	80	64	128	97	31	16	551
	Oct-Dec	*	134	76	58	130	89	41	4	555
	Jan-Mar	*	136	78	58	132	89	43	4	559
	Apr-Jun	*	136	78	58	132	88	44	4	563
	Total		550	312	238	522	363	159	28	
2001/02	Jul-Sep	*	134	76	58	132	89	43	2	565
	Oct-Dec	*	132	75	57	132	87	45	0	565
	Jan-Mar	*	132	75	57	132	87	45	0	565
	Apr-Jun	*	132	75	57	132	87	45	0	565
	Total		530	301	229	528	350	178	2	

\* Projected

Note: Other outgo includes discharges and deaths.

# **L. Two-Year Parole and Outpatient Population Projections**

---

**Tables 11-16**

**Detail Fiscal Years 2000-01 and 2001-02**

Fall 2000 Projections

Table 11  
 California Supervised Parole and Outpatient Population  
 Fiscal Years 2000/01 through 2001/02

	Actual June 30 2000	Sep 30 2000	Dec 31 2000	Mar 31 2001	Jun 30 2001	Sep 30 2001	Dec 31 2001	Mar 31 2002	Jun 30 2002
Total Men and Women	119,298	119,592	121,414	121,771	122,880	123,731	124,962	125,138	125,164
Felons	115,486	115,706	117,511	117,863	118,968	119,817	121,048	121,224	121,250
Outpatients	2,502	2,576	2,593	2,598	2,602	2,604	2,604	2,604	2,604
Others 1	1,310	1,310	1,310	1,310	1,310	1,310	1,310	1,310	1,310
Total Men	106,505	106,735	108,327	108,607	109,641	110,505	111,704	111,821	111,799
Felons	103,453	103,622	105,202	105,482	106,516	107,380	108,579	108,696	108,674
Outpatients	1,899	1,960	1,972	1,972	1,972	1,972	1,972	1,972	1,972
Others 1	1,153	1,153	1,153	1,153	1,153	1,153	1,153	1,153	1,153
Total Women	12,793	12,857	13,087	13,164	13,239	13,226	13,258	13,317	13,365
Felons	12,033	12,084	12,309	12,381	12,452	12,437	12,469	12,528	12,576
Outpatients	603	616	621	626	630	632	632	632	632
Others 1	157	157	157	157	157	157	157	157	157

1 Others include co-ops and other state/federal parolees.

Fall 2000 Projections

Table 12  
 Average Daily Parole and Outpatient Population  
 Fiscal Years 2000/01 through 2001/02

	FY 2000/01 Avg	Sep 30 2000	Dec 31 2000	Mar 31 2001	Jun 30 2001	FY 2001/02 Avg	Sep 30 2001	Dec 31 2001	Mar 31 2002	Jun 30 2002
Total Men and Women	120,927	119,241	120,520	121,598	122,348	124,556	123,382	124,431	125,056	125,353
Felons	117,034	115,384	116,623	117,692	118,438	120,642	119,469	120,517	121,142	121,439
Outpatients	2,582	2,546	2,587	2,596	2,600	2,604	2,604	2,604	2,604	2,604
Others 1	1,310	1,310	1,310	1,310	1,310	1,310	1,310	1,310	1,310	1,310
Total Men	107,883	106,423	107,520	108,427	109,161	111,270	110,131	111,174	111,774	112,000
Felons	104,768	103,336	104,399	105,302	106,036	108,145	107,006	108,049	108,649	108,875
Outpatients	1,962	1,934	1,968	1,972	1,972	1,972	1,972	1,972	1,972	1,972
Others 1	1,153	1,153	1,153	1,153	1,153	1,153	1,153	1,153	1,153	1,153
Total Women	13,044	12,818	13,000	13,170	13,188	13,286	13,251	13,257	13,281	13,354
Felons	12,266	12,048	12,224	12,390	12,402	12,497	12,462	12,468	12,492	12,565
Outpatients	621	613	619	624	628	632	632	632	632	632
Others 1	157	157	157	157	157	157	157	157	157	157

1 Others include co-ops and other state/federal parolees.

Fall 2000 Projections

Table 13  
Movement of Male Felon Parole Population  
Fiscal Years 1999/00 through 2001/02

Fiscal Year	Fiscal Quarter		Total Intake	Paroled	Reinstated	Other Intake	Total Outgo	PV-WNT	PV-RTC	PALS	Other Outgo	Gain/Loss	Population End of Qtr
1999/00	Jul-Sep		34,258	28,722	5,259	277	32,841	3,578	14,812	7,417	7,034	1,894	99,487
	Oct-Dec		33,849	29,016	4,600	233	31,326	3,556	13,767	6,559	7,444	2,480	101,967
	Jan-Mar		33,399	28,092	5,049	258	32,914	3,642	15,263	6,608	7,401	556	102,523
	Apr-Jun		33,674	28,255	5,197	222	32,762	3,517	14,855	7,200	7,190	930	103,453
	Total		135,180	114,085	20,105	990	129,843	14,293	58,697	27,784	29,069	5,860	
2000/01	Jul-Sep	*	33,506	28,006	5,281	219	33,337	3,509	14,923	7,498	7,407	169	103,622
	Oct-Dec	*	33,341	28,399	4,693	249	31,761	3,439	14,074	7,057	7,191	1,580	105,202
	Jan-Mar	*	33,237	27,873	5,084	280	32,957	3,507	14,966	7,168	7,316	280	105,482
	Apr-Jun	*	33,849	28,272	5,321	256	32,815	3,385	14,738	7,207	7,485	1,034	106,516
	Total		133,933	112,550	20,379	1,004	130,870	13,840	58,701	28,930	29,399	3,063	
2001/02	Jul-Sep	*	33,760	28,126	5,380	254	32,896	3,357	14,796	7,225	7,518	864	107,380
	Oct-Dec	*	33,816	28,280	5,282	254	32,617	3,420	14,295	7,363	7,539	1,199	108,579
	Jan-Mar	*	33,254	27,766	5,233	255	33,137	3,425	14,880	7,419	7,413	117	108,696
	Apr-Jun	*	33,274	27,686	5,327	261	33,296	3,436	15,008	7,475	7,377	-22	108,674
	Total		134,104	111,858	21,222	1,024	131,946	13,638	58,979	29,482	29,847	2,158	

\* Projected

Note: Other intake includes transfers direct from court, interstate parole unit (ISPU), and co-ops.  
PALS are parolees-at-large with warrant issued (absconded from parole supervision).  
Other outgo includes transfers to ISPU, discharges and deaths.

Fall 2000 Projections

Table 14  
 Movement of Female Felon Parole Population  
 Fiscal Years 1999/00 through 2001/02

Fiscal Year	Fiscal Quarter		Total Intake	Paroled	Reinstated	Other Intake	Total Outgo	PV-WNT	PV-RTC	PALS	Other Outgo	Gain/Loss	Population End of Qtr
1999/00	Jul-Sep		4,088	3,262	772	54	3,756	353	1,496	966	941	389	11,333
	Oct-Dec		3,958	3,243	670	45	3,534	374	1,322	845	993	420	11,753
	Jan-Mar		3,910	3,132	726	52	3,726	341	1,565	867	953	185	11,938
	Apr-Jun		3,832	3,113	676	43	3,737	347	1,393	960	1,037	95	12,033
	Total		15,788	12,750	2,844	194	14,753	1,415	5,776	3,638	3,924	1,089	
2000/01	Jul-Sep	*	3,903	3,124	745	34	3,852	333	1,425	1,087	1,007	51	12,084
	Oct-Dec	*	3,904	3,157	713	34	3,679	371	1,400	909	999	225	12,309
	Jan-Mar	*	3,808	3,051	723	34	3,736	383	1,451	917	985	72	12,381
	Apr-Jun	*	3,872	3,130	708	34	3,801	388	1,398	969	1,046	71	12,452
	Total		15,487	12,462	2,889	136	15,068	1,475	5,674	3,882	4,037	419	
2001/02	Jul-Sep	*	3,778	3,041	703	34	3,793	368	1,413	977	1,035	-15	12,437
	Oct-Dec	*	3,803	3,046	723	34	3,771	367	1,396	966	1,042	32	12,469
	Jan-Mar	*	3,796	3,001	761	34	3,737	384	1,416	933	1,004	59	12,528
	Apr-Jun	*	3,844	3,049	761	34	3,796	369	1,372	1,006	1,049	48	12,576
	Total		15,221	12,137	2,948	136	15,097	1,488	5,597	3,882	4,130	124	

\* Projected

Note: Other intake includes transfers direct from court, interstate parole unit (ISPU), and co-ops.  
 PALS are parolees-at-large with warrant issued (absconded from parole supervision).  
 Other outgo includes transfers to ISPU, discharges and deaths.

Fall 2000 Projections

Table 15  
 Movement of Male Civil Narcotic Addict Outpatient Population  
 Fiscal Years 1999/00 through 2001/02

<u>Fiscal Year</u>	<u>Fiscal Quarter</u>	<u>Total Intake</u>	<u>Released from Institution</u>	<u>Reinstated</u>	<u>Total Outgo</u>	<u>PV-WNT</u>	<u>PV-RTC</u>	<u>RALS</u>	<u>Other Outgo</u>	<u>Gain/Loss</u>	<u>Population End of Qtr</u>
1999/00	Jul-Sep	552	486	66	540	1	249	86	204	26	1,980
	Oct-Dec	402	355	47	492	9	214	96	173	-86	1,894
	Jan-Mar	474	416	58	488	4	234	68	182	-28	1,866
	Apr-Jun	464	410	54	445	9	199	59	178	33	1,899
Total		1,892	1,667	225	1,965	23	896	309	737	-55	
2000/01	Jul-Sep *	476	419	57	415	9	221	111	74	61	1,960
	Oct-Dec *	434	374	60	422	9	214	88	111	12	1,972
	Jan-Mar *	423	363	60	423	9	210	87	117	0	1,972
	Apr-Jun *	423	363	60	423	9	210	87	117	0	1,972
Total		1,756	1,519	237	1,683	36	855	373	419	73	
2001/02	Jul-Sep *	423	363	60	423	9	210	87	117	0	1,972
	Oct-Dec *	423	363	60	423	9	210	87	117	0	1,972
	Jan-Mar *	423	363	60	423	9	210	87	117	0	1,972
	Apr-Jun *	423	363	60	423	9	210	87	117	0	1,972
Total		1,692	1,452	240	1,692	36	840	348	468	0	

\* Projected

Note: RALS are releasees-at-large with warrant issued (absconded from outpatient supervision).  
 Other outgo includes discharges and deaths.

Fall 2000 Projections

Table 16  
 Movement of Female Civil Narcotic Addict Outpatient Population  
 Fiscal Years 1999/00 through 2001/02

<u>Fiscal Year</u>	<u>Fiscal Quarter</u>		<u>Total Intake</u>	<u>Released from Institution</u>	<u>Reinstated</u>	<u>Total Outgo</u>	<u>PV-WNT</u>	<u>PV-RTC</u>	<u>RALS</u>	<u>Other Outgo</u>	<u>Gain/Loss</u>	<u>Population End of Qtr</u>
1999/00	Jul-Sep		158	144	14	163	3	55	33	72	-3	675
	Oct-Dec		97	91	6	124	1	40	23	60	-28	647
	Jan-Mar		100	84	16	136	1	61	13	61	-34	613
	Apr-Jun		102	89	13	108	1	43	8	56	-10	603
	Total		457	408	49	531	6	199	77	249	-75	
2000/01	Jul-Sep	*	105	97	8	92	0	54	19	19	13	616
	Oct-Dec	*	98	89	9	93	0	49	18	26	5	621
	Jan-Mar	*	98	89	9	93	0	49	19	25	5	626
	Apr-Jun	*	97	88	9	93	0	49	18	26	4	630
	Total		398	363	35	371	0	201	74	96	27	
2001/02	Jul-Sep	*	98	89	9	96	0	49	18	29	2	632
	Oct-Dec	*	96	87	9	96	0	48	18	30	0	632
	Jan-Mar	*	96	87	9	96	0	48	18	30	0	632
	Apr-Jun	*	96	87	9	96	0	48	18	30	0	632
	Total		386	350	36	384	0	193	72	119	2	

\* Projected

Note: RALS are releasees-at-large with warrant issued (absconded from outpatient supervision).  
 Other outgo includes discharges and deaths.