

# Spring 2007

---



Adult  
Population  
Projections  
2007 - 2012

California Department of Corrections and Rehabilitation



# CALIFORNIA DEPARTMENT OF CORRECTIONS AND REHABILITATION

**JAMES E. TILTON**

*Secretary*

**STEPHEN W. KESSLER**

*Undersecretary, Program Support*

**STEVEN F. CHAPMAN, Ph.D**

*Assistant Secretary*

*Office of Research*

**L.J. CARR, Ph.D.**

*Chief*

*Offender Information Services Branch*

**JAY ATKINSON**

*Research Manager II*

*Estimates and Statistical Analysis Section*

**JACK LEONARD**

*Operations Research Specialist III*



## **Population Projections Unit**

**JACQUI CODER**

*Research Manager I*

**SHELLEY BUTTLER**

*Research Analyst II*

**LORAN SHELEY**

*Research Analyst II*

**PAULA ENSELE**

*Research Analyst I*

## **ACKNOWLEDGMENTS**

Although the Estimates and Statistical Analysis Section is responsible for the semiannual publication of the Population Projections, others in the Department of Corrections and Rehabilitation made significant contributions that are greatly appreciated. Among those involved in the projections were (in alphabetical order) the:

- Board of Parole Hearings
- Division of Adult Institutions
- Division of Adult Parole Operations
- Office of Budget Management
- Enterprise Information Systems

**TABLE OF CONTENTS**

**PAGE**

**EXECUTIVE SUMMARY ----- 1**

**SPRING 2007 ADULT POPULATION PROJECTIONS----- 5**

**INTRODUCTION----- 7**

**A. Factors Affecting Population ----- 7**

**B. Comparison of Spring 2007 with Fall 2006 Projections ----- 8**

**PREMISES----- 12**

**C. Felon Admissions----- 12**

**D. Significant Chaptered Legislation and Initiatives ----- 13**

**E. The Work Incentive Program ----- 15**

**F. Court Sentences ----- 16**

**G. Placement Need Projections----- 16**

**H. Parole Violators ----- 17**

**I. Felon Parole Population ----- 18**

**SPRING 2007 POPULATION PROJECTIONS TABLES----- 23**

**J. Six Year Population Projections ----- 25**

**K. Institution Population and Placement Needs Projections ----- 29**

**L. Two Year Parole and Outpatient Population Projections ----- 39**

# EXECUTIVE SUMMARY

---

## EXECUTIVE SUMMARY

On December 31, 2006, the total institution population was 172,528. This is 4,493 (2.7 percent) higher than the December 31, 2005 population. This compares to an increase of 4,069 (2.5 percent) over the same time period one year ago. This increase is the result of increases in parole violators with new terms (PV-WNT), and parole violators returned to custody (PV-RTC).

The number of new admissions (NA) from court during calendar year 2006 was 50,644. This is a decrease of less than 1 percent (133) compared to the NAs in calendar year 2005. New admissions in calendar year 2005 were 50,777 or 3.8 percent more (1,849) than those in calendar year 2004.

There were 20,785 PV-WNT returns during calendar year 2006. This is a 4.9 percent (973) increase over returns in calendar year 2005. Returns in calendar year 2005 were 10.9 percent (1,945) more than those in calendar year 2004.

There were 69,859 PV-RTC returns during calendar year 2006. This is a 12.7 percent (7,872) increase over returns in calendar year 2005. PV-RTC returns in calendar year 2005 were 3.9 percent (2,355) higher than in calendar year 2004.

The parole population on December 31, 2006 was 121,808, or 6,807 higher than the December 31, 2005 parole population. The primary reasons for this growth are an increase in prison releases to parole and a decrease in discharges from parole.

The Spring 2007 projected institution population is lower than Fall 2006 projections throughout the projection cycle. The difference is primarily due to decreased new admissions from court. The population is projected to be 175,210 on June 30, 2007, 878 lower than projected in Fall 2006. On June 30, 2008, the population is projected to be 178,236, which is 1,322 lower than projected in Fall 2006. By June 30, 2012, the population is projected to be 749 lower than the Fall 2006 Projections.

The parole population is projected to be higher than forecasted in Fall 2006 throughout the projection cycle. The change is largely due to an increase in releases from prison as well as a decrease in discharges from parole. On June 30, 2008, the population is projected to be 120,117, which is 643 higher than projected in Spring 2006. On June 30, 2012, the population is projected to be 126,068, which is 2,732 higher than projected in Fall 2006. By June 30, 2012, the population is projected to be 1,411 higher than the Fall 2006 Projections.

# SPRING 2007 ADULT POPULATION PROJECTIONS

---

## INTRODUCTION

Following are the California Department of Corrections and Rehabilitation's (CDCR) projections of adult institution, parole, and outpatient populations for fiscal years (FY) 2006-07 through 2011-12. The projections are based upon the most current available data and include existing laws and regulations as well as any signed legislation that will come into effect during the current projections cycle. The projections do not include proposed legislation, programs, propositions, or policy changes that have not been signed or affirmed as of the beginning of the projection process.

The projections do not include the impact of the recent U.S. Supreme Court ruling (*Cunningham v. California*) that invalidates California's criminal sentencing law. It is unknown at this time how this ruling may impact current and future court sentencing practices.

### **A. Factors Affecting Population**

- On December 31, 2006, the total institution population was 172,528. This is 4,493 (2.7 percent) higher than the December 31, 2005 population. This compares to an increase of 4,096 (2.5 percent) over the same time period one year ago. This increase is the result of increases in parole violators with new terms (PV-WNT), and parole violators returned to custody (PV-RTC).
- The number of new admissions (NA) from court during calendar year 2006 was 50,644. This is a decrease of less than 1 percent (133) compared to the NAs in calendar year 2005. New admissions in calendar year 2005 were 50,777 or 3.8 percent more (1,849) than those in calendar year 2004.
- There were 20,785 PV-WNT returns during calendar year 2006. This is a 4.9 percent (973) increase over returns in calendar year 2005. Returns in calendar year 2005 were 10.9 percent (1,945) more than those in calendar year 2004.
- There were 69,859 PV-RTC returns during calendar year 2006. This is a 12.7 percent (7,872) increase over returns in calendar year 2005. PV-RTC returns in calendar year 2005 were 3.9 percent (2,355) higher than calendar year 2004.
- The parole population on December 31, 2006 was 121,808, or 6,807 higher than the December 31, 2005, parole population. The primary reasons for this growth are an increase in prison releases to parole and a decrease in discharges from parole.



**B. Comparison of Spring 2007 with Fall 2006 Projections**

**1. Institution Population**

The total institution population was 172,528 on December 31, 2006, or 572 lower than forecasted in the Fall 2006 Adult Population Projections (Fall 2006 Projections). The difference is due to fewer new admissions and more releases to parole, partially offset by more parolees returned to custody than expected.

The following table compares the Spring 2007 Adult Population Projections (Spring 2007 Projections) to the Fall 2006 Projections.

Table A

Comparison of Spring 2007 with Fall 2006 Projections  
Institution Population  
June 30, 2007 through June 30, 2012

---

<u>Year End June 30</u>	<u>Spring 2007 Projections</u>	<u>Fall 2006 Projections</u>	<u>Difference</u>
2007	175,210	176,088	-878
2008	178,236	179,558	-1,322
2009	180,981	182,399	-1,418
2010	183,300	185,511	-2,211
2011	186,148	187,619	-1,471
2012	189,176	189,925	-749

---

The Spring 2007 projected institution population is lower than Fall 2006 Projections throughout the projection cycle. The difference is primarily due to decreased new admissions from court. The population is projected to be 175,210 on June 30, 2007, 878 lower than projected in Fall 2006. On June 30, 2008, the population is projected to be 178,236, which is 1,322 lower than projected in Fall 2006. By June 30, 2012, the population is projected to be 749 lower than the Fall 2006 Projections.

**2. Parole Population**

The parole population was 121,808 on December 31, 2006, or 2,401 higher than projected in the Fall 2006 Projections. This difference is mainly due to more re-releases to parole and fewer discharges than expected, partially offset by more parolees returned to custody than expected.

Table B

Comparison of Spring 2007 with Fall 2006 Projections  
Parole Population  
June 30, 2007 through June 30, 2012

---

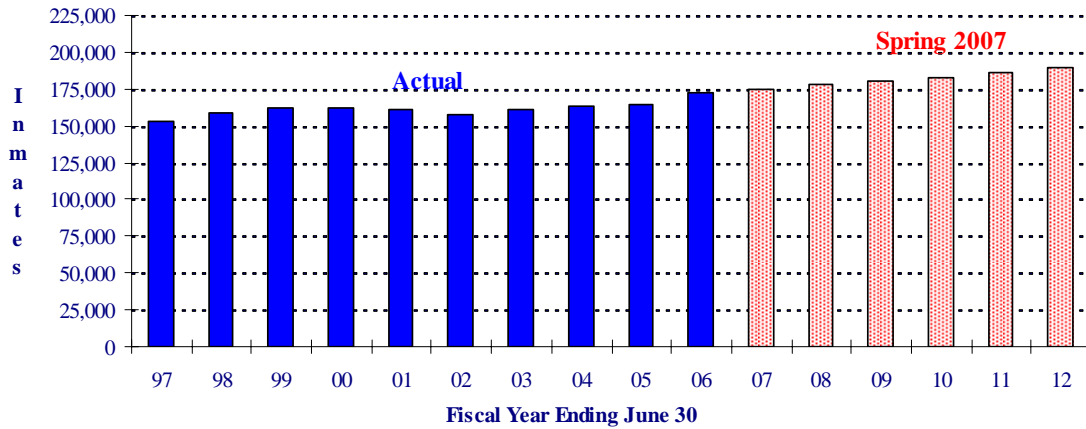
<u>Year End</u> <u>June 30</u>	<u>Spring 2007</u> <u>Projections</u>	<u>Fall 2006</u> <u>Projections</u>	<u>Difference</u>
2007	122,833	120,117	2,716
2008	126,068	123,336	2,732
2009	128,041	126,911	1,130
2010	130,500	128,841	1,659
2011	132,410	131,081	1,329
2012	134,301	132,890	1,411

---

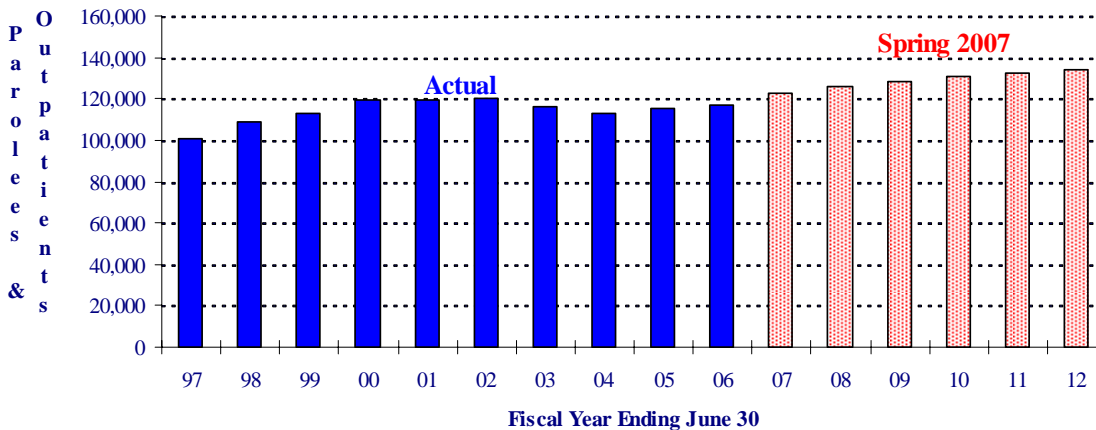
The parole population is projected to be higher than forecasted in Fall 2006 throughout the projection cycle. The change is largely due to an increase in releases from prison as well as a decrease in discharges from parole. On June 30, 2007, the population is projected to be 122,833, which is 2,716 higher than projected in Fall 2006. On June 30, 2008, the population is projected to be 126,068, which is 2,732 higher than projected in Fall 2006. By June 30, 2012, the population is projected to be 134,301 or 1,411 higher than the Fall 2006 Projections.

Figures 1 and 2 graphically display the Spring 2007 Projections for the institution and parole and outpatient populations. Figure 1 shows the actual and projected institution population, while Figure 2 shows the actual and projected California supervised parole and outpatient populations. Both figures are for FY 1996-97 through 2011-12.

**Figure 1**  
**Total Institution Population**  
**Fiscal Years 1996-97 through 2011-12**

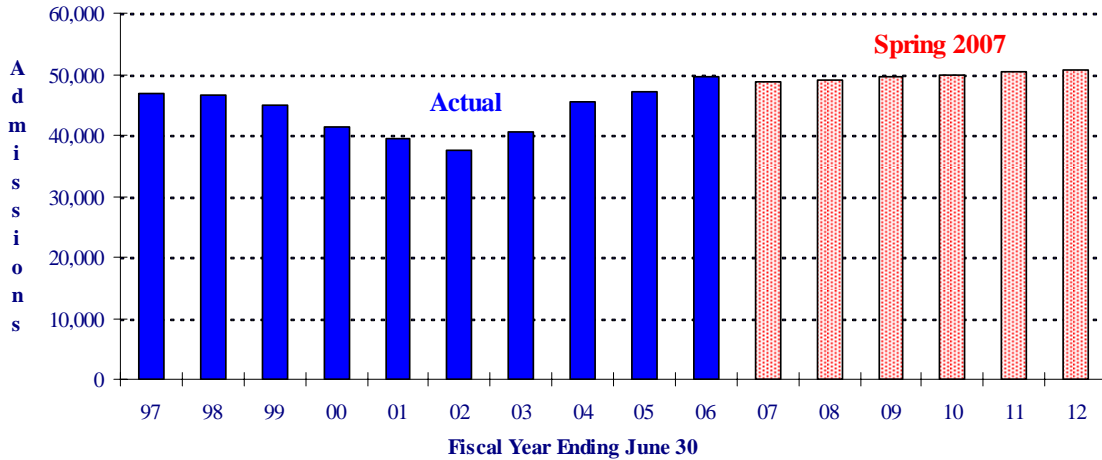


**Figure 2**  
**Total Parole Population**  
**Fiscal Years 1996-97 through 2011-12**

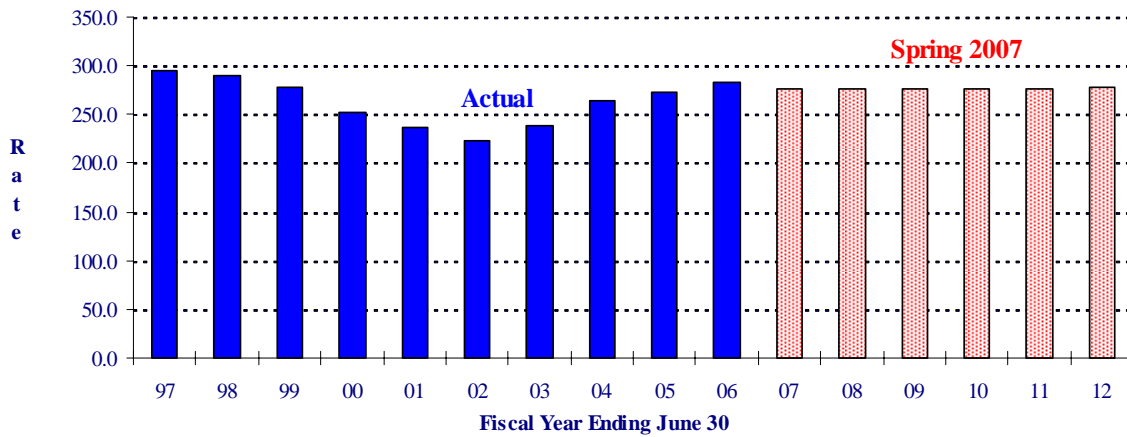


Figures 3 and 4 display the Spring 2007 Projections for felon admissions. Figure 3 shows the actual and projected felon admissions, while Figure 4 shows the actual and projected felon admission rates per 100,000 California residents, ages 18-49. Both figures are for FY 1996-97 through FY 2011-12.

**Figure 3**  
**Total Felon Admissions**  
**Fiscal Years 1996-97 through 2011-12**



**Figure 4**  
**Total Felon Admission Rates**  
**Fiscal Years 1996-97 through 2011-12**



**PREMISES**

**C. Felon Admissions**

Table C, below, summarizes actual felon admissions to California Department of Corrections and Rehabilitation (CDCR) prisons from FY 1996-97 through FY 2005-06, while Table D displays the projected felon admissions for FY 2006-07 through FY 2011-12. Consistent with past practice, admission rates displayed in Tables C and D are expressed as the number of felon admissions to prison from court per 100,000 California residents, ages 18-49.

Table C

Actual Total Felon Admissions  
Fiscal Years 1996-97 through 2005-06

---



---

<u>Fiscal Year</u>	<u>Number of CDCR Felon Admissions*</u>	<u>State Population Ages 18-49 (In Thousands)</u>	<u>Admission Rate**</u>
1996-97	46,750	15,872.7	294.5
1997-98	46,511	16,031.4	290.1
1998-99	44,983	16,215.1	277.4
1999-00	41,469	16,401.5	252.8
2000-01	39,350	16,613.3	236.9
2001-02	37,517	16,832.3	222.9
2002-03	40,616	16,997.8	238.9
2003-04	45,434	17,146.4	265.0
2004-05	47,205	17,293.5	273.0
2005-06	49,483	17,441.7	283.7

\* Not including Division of Juvenile Justice cases, other state/federal admissions, or direct admissions to parole.

\*\* Number of CDCR felon admissions per 100,000 California state residents, ages 18-49.

---



---

The increase in admissions continued over the last fiscal year. Felon admissions for FY 2005-06 were 49,483, up 4.8 percent from FY 2004-05. This is more than the increase in FY 2004-05, during which admissions were 3.9 percent higher than the previous fiscal year. Admissions have been increasing for the past four fiscal years.

In the last six months, July to December 2006, total felon admissions were 23,953, or 3.4 percent less compared to the same time period one year ago. Female felon admissions also declined during this period. Compared to the last six months of 2005, female felon admissions decreased 3.5 percent in the July to December 2006 period.

As shown in Table D, the Spring 2007 felon admissions projection is lower than the Fall 2006 Projections throughout the projection cycle. This change is mainly due to the fact that although felon admissions have continued to grow, the rate of growth has slowed. New admissions are projected based on trends.

Table D

Projected Total Felon Admissions  
Fiscal Years 2006-07 through 2011-12

<u>Fiscal Year</u>	<u>Spring 2007</u>	<u>Fall 2006</u>	<u>Difference</u>	<u>Rate</u>
2006-07	48,632	49,086	-454	276.5
2007-08	49,114	49,662	-548	276.8
2008-09	49,538	50,138	-600	276.7
2009-10	49,926	50,534	-608	276.7
2010-11	50,288	50,854	-566	276.9
2011-12	50,627	51,120	-493	277.2

**D. Significant Chaptered Legislation and Initiatives**

**1. Legislation**

The following legislative bills were chaptered and will have an impact on the state prison system. However, because the impact of the length of confinement could not be estimated or was insignificant, these bills are not included in the Spring 2007 Projections.

- Chapter 432, Statutes of 2006 [Assembly Bill (AB) 2190, Benoit], creates a new alternate felony/misdemeanor for a person convicted of reckless driving that proximately causes one or more of various specified injuries to a person other than the driver.
- Chapter 522, Statutes of 2006 (AB 2886, Frommer), creates a new alternate felony/misdemeanor for every person who, with the intent to defraud: acquires or retains possession of the personal identifying information of another person, and has previously been convicted of the same; acquires or retains personal identifying information of 10 or more other persons; or sells, transfers, or conveys personal identifying information.

- Chapter 337, Statutes of 2006 [Senate Bill (SB) 1128, Alquist], although similar to the Jessica's Law initiative, this bill created additional new offenses and sentence enhancements for specified sexual crimes.
- Chapter 596, Statutes of 2006 (SB 1222, Ackerman), added various offenses relating to prohibited possession of a firearm, carrying a concealed firearm, and carrying a loaded firearm, to the list of offenses which, if committed by members of the criminal street gang, established a pattern of criminal gang activity.
- Chapter 646, Statutes of 2006 (SB 1299, Speier), creates a new felony for any person who possesses specified chemicals with the intent to sell, transfer, or otherwise furnish those chemicals to another, knowing that they will be used to manufacture phencyclidine or methamphetamine.
- Chapter 650, Statutes of 2006 (SB 1318, Cedillo), creates a new 1-year enhancement for any person who is convicted of trafficking any of the controlled substances, as specified, if the violation occurred upon the grounds of, or within 1,000 feet of, a drug treatment center, detoxification facility, or homeless shelter.
- Chapter 668, Statutes of 2006 (SB 1538, Scott), expands current law related to persons who are prohibited from obtaining a firearm, and who knowingly furnish a fictitious name or address, or knowingly furnish any incorrect information, or knowingly omits any information required to be provided for the register.
- Chapter 688, Statutes of 2006 (SB 1735, Cox), creates a new alternate felony/misdemeanor for any person who willfully flees or attempts to elude a pursuing peace officer, as specified, when the person operating the pursued vehicle willfully drives that vehicle on a highway in the opposite direction of lawful traffic.
- Chapter 875, Statutes of 2006 (SB 1453, Speier), provides that specified persons who successfully complete an in-prison drug treatment program, may enter into a residential aftercare drug treatment program when paroled. Upon the successful completion of the 150-day residential aftercare, the parolee shall be discharged from parole, as specified.

**2. Initiatives**

The following initiative passed and will have an impact on the state prison system. However, because the impact of the length of confinement could not be estimated or was insignificant, this initiative is not included in the Spring 2007 Projections.

- The Sexual Predator Punishment and Control Act: Jessica's Law. This Initiative proposed numerous amendments and additions to the Penal and Welfare and Institutions Codes with respect to the incarceration and parole of specified sex offenders. Due to data limitations surrounding many of the proposed changes to law, a complete estimate of the impact of this initiative was not possible.

**E. The Work Incentive Program**

This program allows eligible inmates to earn up to a six-month reduction per year in sentence length. The Work Incentive Program applies to all felons who committed their offenses on or after January 1, 1983, and to those felons who committed their offenses before January 1, 1983, who choose to participate. Approximately 89 percent of the June 30, 2006, eligible population was earning a one-half sentence reduction, and participation is expected to continue at that level throughout the projection period. The Three Strikes Law limits credit earning to 20 percent for affected inmates. The Penal Code also limits persons who have been convicted of any violent felony to no more than a 15 percent sentence reduction.



**F. Court Sentences**

As shown in Table E, the average sentence for newly admitted felons and parole violators returned with new terms (PV-WNT) was 47.0 months for FY 2005-06, a significant decrease compared to FY 2004-05. This was the third consecutive year the average sentence decreased significantly. Pre-confinement credits have remained relatively steady for the past 10 years.

Table E

Average Sentence and Credits  
For Felon New Admissions and PV-WNTs  
(in months)

<u>Fiscal Year</u>	<u>Sentence<sup>1</sup></u>	<u>Pre-Confinement Credits</u>
1996-97	56.2	7.1
1997-98	54.4	6.8
1998-99	54.7	6.8
1999-00	54.4	6.9
2000-01	53.3	7.0
2001-02	53.6	7.2
2002-03	53.1	7.2
2003-04	50.5	7.1
2004-05	48.2	7.0
2005-06	47.0	7.0

<sup>1</sup> Includes third-strike and other life commitments.

**G. Placement Need Projections**

As in the Fall 2006 Projections, the Spring 2007 Projections of institution bed needs, by level, consider both inmate classification score level and administrative determinants, such as institutional security and public safety, as specified in Section 62010 of the California Department of Corrections and Rehabilitation’s Department Operations Manual. It is assumed that the male felon reception center population will fluctuate proportionately with the changes in male felon intake. Special housing projections assume a constant proportion of the number of inmates of each classification level in each of these categories over the projection period. The projections do not consider the impact of operational changes such as the need to single-cell Level IV inmates in the Enhanced Outpatient Program or the increase in indeterminate Security Housing Unit (SHU) terms. Each of these changes in policy or programs could result in the need for additional Level IV and SHU beds.

## **H. Parole Violators**

For the six-month period from July to December 2006, there were 31,689 male felon parole violators returned to custody or pending parole revocation (PV-RTC/PendRev), 575 more than projected in the Fall 2006 Projections. The corresponding return rate was 53.1, or less than one point higher than projected. The assumption for the Spring 2007 Projections is that the male PV-RTC/PendRev rate will slightly increase to about 53.7 for FY 2006-07 through 2008-09, then slightly decrease to about 53.0 for the remaining fiscal years in the projection cycle.

There were 9,232 male felon PV-WNTs for the same July to December 2006 period, 149 less than projected in the Fall 2006 Projections. The corresponding male felon PV-WNT return rate was 15.5, or less than one-half a point lower than projected. The Spring 2007 Projections assume the male PV-WNT rate will remain close to the current level of 15.5 throughout the projection cycle.

There were 2,890 female felon PV-RTC/PendRev returns during the July to December 2006 period, 166 more than the Fall 2006 Projections. The corresponding return rate was 38.2, or about 2.5 points higher than projected. The assumption for the Spring 2007 Projections is that the female PV-RTC/PendRev rate will increase to 39.1 for the remainder of FY 2006-07, then gradually decrease to 35.9 by FY 2011-12.

There were 938 female felon PV-WNTs for the same July to December 2006 period, 69 more than the Fall 2006 Projections. The corresponding female felon PV-WNT return rate was 12.4, or about one point higher than projected. The Spring 2007 Projections assume the female PV-WNT rate will stay at about 12.4 throughout the projection cycle.

The average time served for male PV-RTCs during the July to December 2006 period was 4.0 months, which was about 2 days more than the average time served by this group during the January to June 2006 period. The Spring 2007 Projections assume that this will remain unchanged at 4.0 months.

The average time served for male parolees Continued on Parole (COP) during the July to December 2006 time period was 0.7 months, or about 7 days more than the average time served by this group in the January to June 2006 period. The Spring 2007 Projections assume that this will remain unchanged at 0.7 months

The average time served for female PV-RTCs during the July to December 2006 period was 3.8 months, which was about 3 days less than the average time served by this group during the January to June 2006 period. The Spring 2007 Projections assume that this will remain unchanged at 3.8 months.

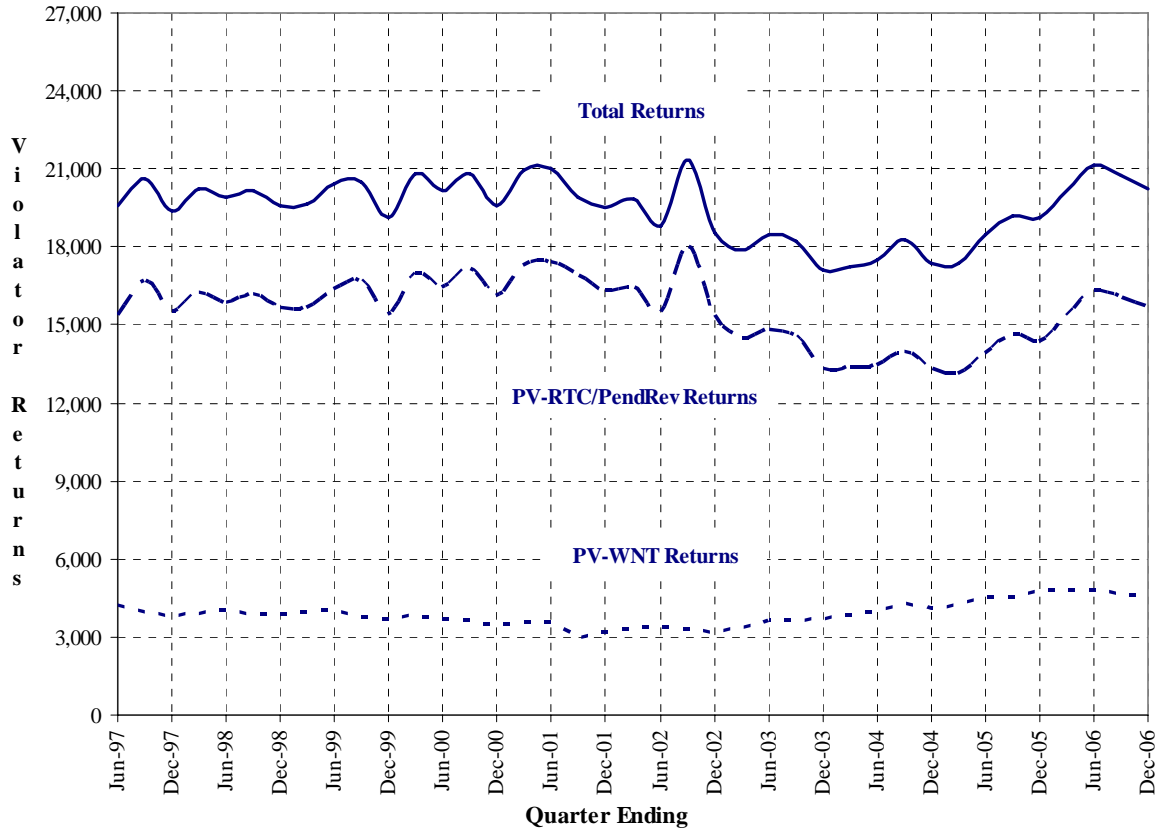
The average time served for female COPs during the July to December 2006 time period was 0.5 months, or about 2 days more than the average time served by this group in the January to June 2006 period. The Spring 2007 Projections assume that this will remain unchanged at 0.5 months.

The graphs on the following pages illustrate actual parole returns to prison. Figure 5 displays the number of male felon parole violator returns, by quarter, since June 1997; Figure 6 shows the number of female felon parole violator returns, by quarter, for the same time period. Figures 7 and 8 show actual and projected PV-RTC/PendRev rates for male and female felons for the period from June 1997 through June 2012; Figures 9 and 10 show actual and projected PV-WNT rates for male and female felons for the same time period

**I. Felon Parole Population**

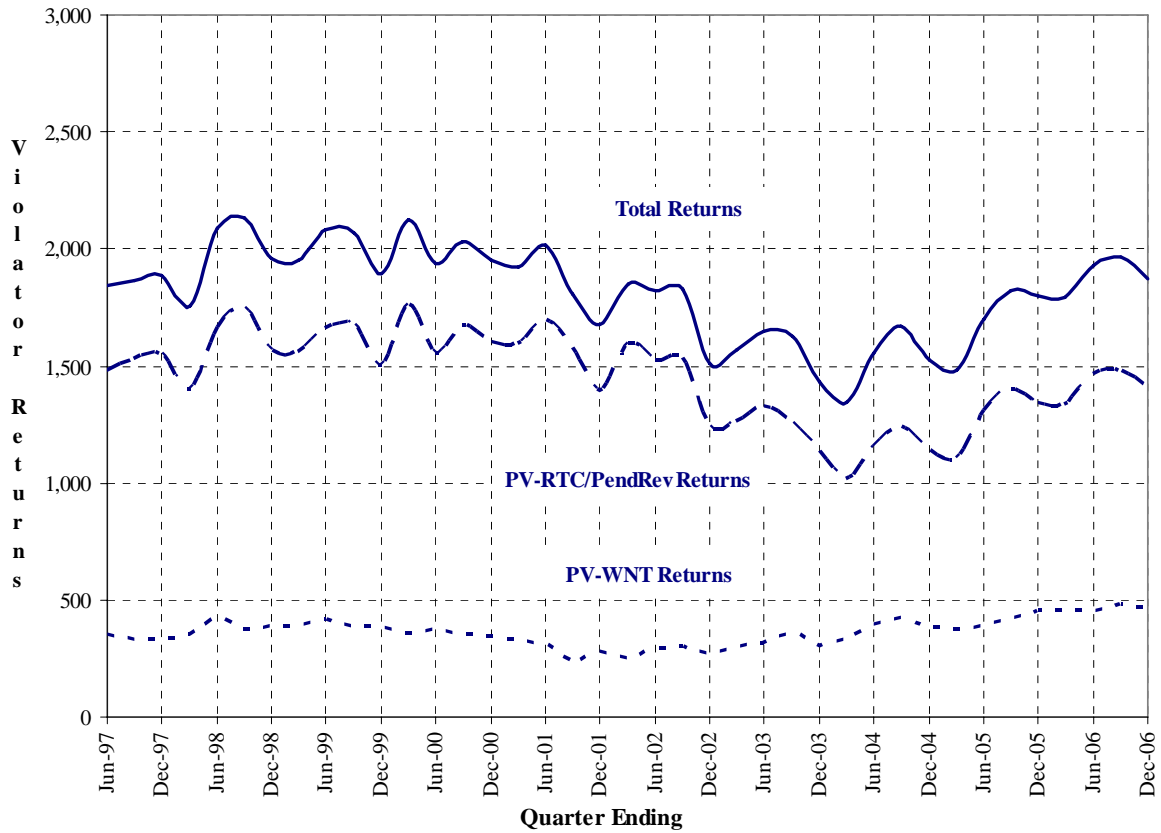
On December 31, 2006, the felon parole population was 118,551, which is 2,387 higher than projected in the Fall 2006 Projections. Between July and December 2006, this population increased by 5,279.

**Figure 5**  
**Male Felon Parole Violator Returns**  
**June 1997 through December 2006**



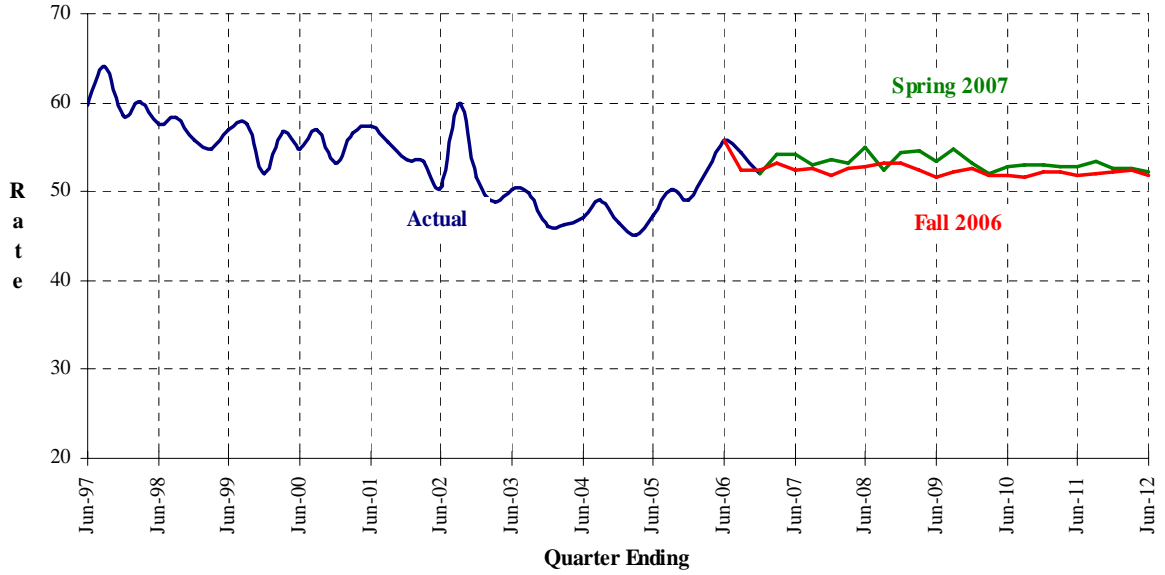
Note: PV-RTC/PendRevs are parole violators returned to custody or pending revocation.  
 PV-WNTs are parole violators returned with new term.

**Figure 6**  
**Female Felon Parole Violator Returns**  
**June 1997 through December 2006**

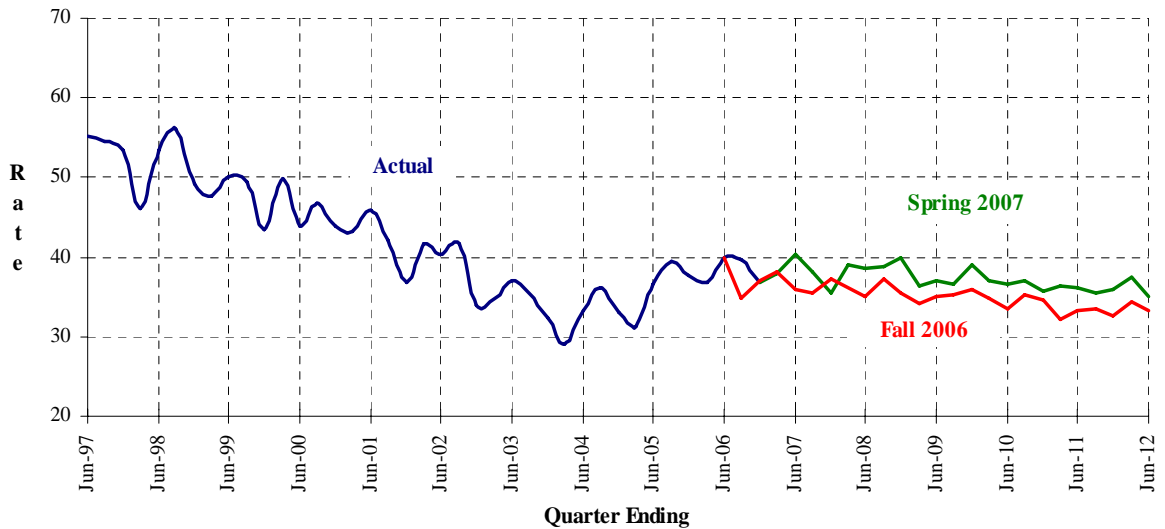


Note: PV-RTC/PendRevs are parole violators returned to custody or pending revocation.  
 PV-WNTs are parole violators returned with new term.

**Figure 7**  
**Male Felon PV-RTC/PendRev Rates**  
**June 1997 through June 2012**

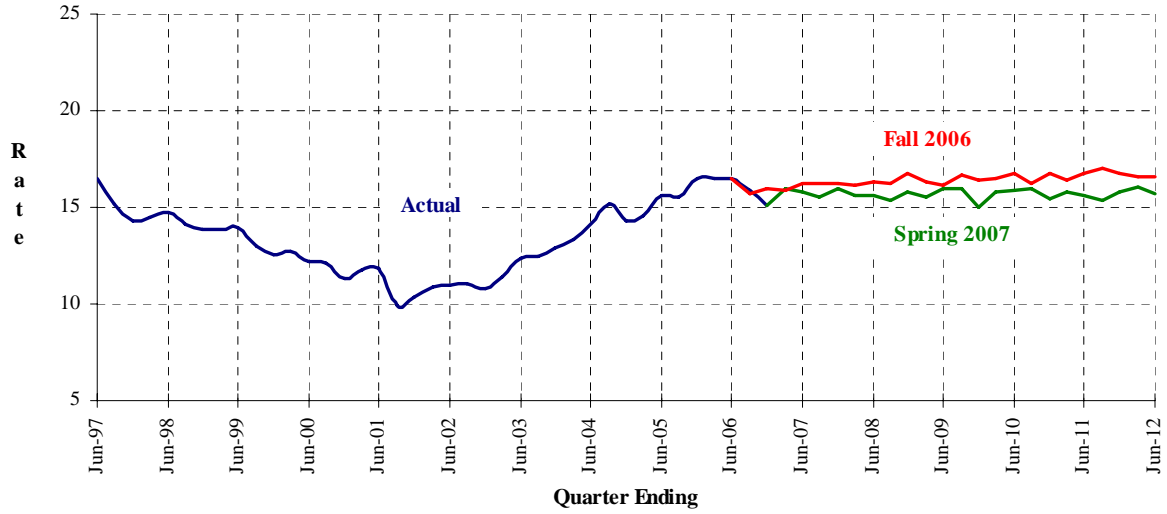


**Figure 8**  
**Female Felon PV-RTC/PendRev Rates**  
**June 1997 through June 2012**

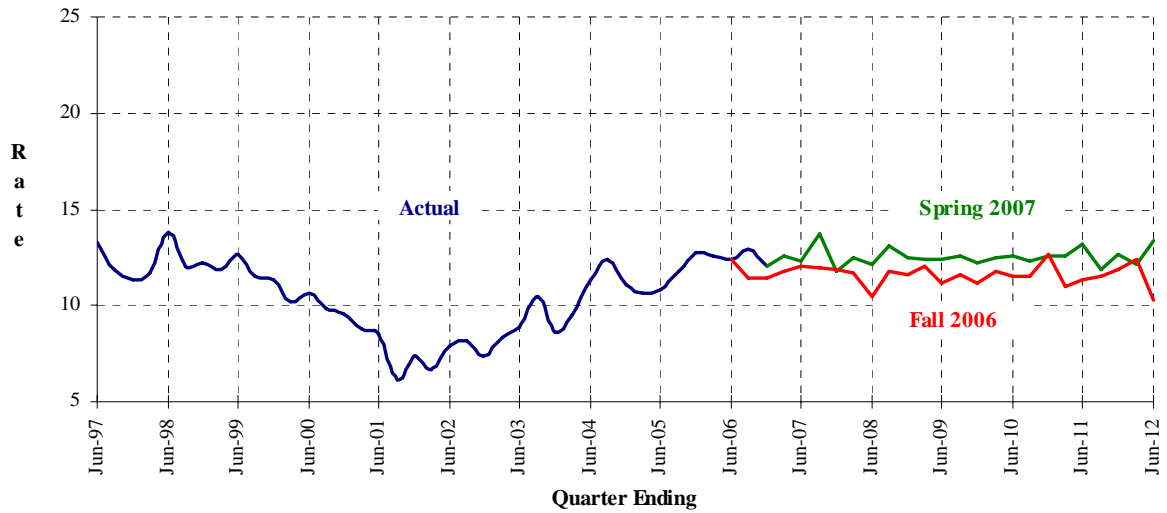


PV-RTC/PendRevs are parole violators returned to custody or pending revocation. Rates are calculated by dividing annualized returns by the average daily parole and Parolee-at-Large (PAL) populations then multiplying by 100.

**Figure 9**  
**Male Felon PV-WNT Rates**  
**June 1997 through June 2012**



**Figure 10**  
**Female Felon PV-WNT Rates**  
**June 1997 through June 2012**



PV-WNTs are parole violators returned with a new term. Rates are calculated by dividing annualized returns by the average daily parole and Parolee-at-Large (PAL) populations then multiplying by 100.

**SPRING 2007 POPULATION PROJECTIONS TABLES**

The Spring 2007 Projections are summarized in Tables 1 and 2 and are presented in greater detail in Tables 3 through 16. Tables 3 and 4 present the quarterly institution populations, while Tables 5 and 6 present detailed projections by inmate placement needs. Tables 7 through 10 project the movement of institution populations (including civil narcotic addicts), and Tables 11 through 16 present detailed projections of the parole and outpatient populations.



**J. Six Year Population Projections**

**Tables 1-2**

**Fiscal Years 2006-07 through 2011-12**

Department of Corrections and Rehabilitation  
State of California  
02/13/2007

Population Projections Unit  
Estimates and Statistical Analysis Section  
Offender Information Services Branch

Spring 2007 Projections

Table 1  
Institution Population  
June 30, 1997 through June 30, 2012

As of June 30	Total	Total Males		Male		Male		Male		Total Females		Female		Female				
		Males	Felons	Addicts	Others	Felons	Addicts	Others	Felons	Addicts	Others	Addicts	Others					
Actual																		
1997	152,506	141,669	139,239	2,163	267	10,837	10,188	583	66	11,206	10,594	562	50	11,483	10,949	495	39	
1998	158,207	147,001	144,805	1,924	272	11,206	10,594	562	50	11,483	10,949	495	39	11,207	10,620	535	52	
1999	162,064	150,581	148,621	1,703	257	11,207	10,620	535	52	10,712	10,261	403	48	9,826	9,453	311	62	
2000	162,000	150,793	148,754	1,776	263	10,856	10,528	283	45	11,749	11,335	366	48	10,080	9,752	270	58	
2001	161,497	150,785	148,853	1,668	264	10,641	10,339	261	41	10,856	10,528	283	45	10,641	10,339	261	41	
2002	157,979	148,153	146,455	1,351	347	10,856	10,528	283	45	11,749	11,335	366	48	10,856	10,528	283	45	
2003	160,931	150,851	149,449	1,104	298	9,826	9,453	311	62	10,080	9,752	270	58	10,080	9,752	270	58	
2004	163,500	152,859	151,493	1,086	280	10,641	10,339	261	41	10,641	10,339	261	41	10,641	10,339	261	41	
2005	164,179	153,323	152,016	966	341	10,856	10,528	283	45	10,856	10,528	283	45	10,856	10,528	283	45	
2006	172,561	160,812	159,616	908	288	11,749	11,335	366	48	11,749	11,335	366	48	11,749	11,335	366	48	
Projected																		
2007	175,210	163,140	161,978	867	295	12,070	11,680	344	46	12,070	11,680	344	46	12,070	11,680	344	46	
2008	178,236	165,891	164,734	862	295	12,345	11,955	344	46	12,345	11,955	344	46	12,345	11,955	344	46	
2009	180,981	168,347	167,192	860	295	12,634	12,244	344	46	12,634	12,244	344	46	12,634	12,244	344	46	
2010	183,300	170,393	169,239	859	295	12,907	12,517	344	46	12,907	12,517	344	46	12,907	12,517	344	46	
2011	186,148	172,845	171,691	859	295	13,303	12,913	344	46	13,303	12,913	344	46	13,303	12,913	344	46	
2012	189,176	175,613	174,459	859	295	13,563	13,173	344	46	13,563	13,173	344	46	13,563	13,173	344	46	

Note: Others include county diagnostic cases, persons from other states, federal prisoners, county safekeepers, and Juvenile Justice (JJ) wards.

Department of Corrections and Rehabilitation  
State of California  
02/13/2007

Population Projections Unit  
Estimates and Statistical Analysis Section  
Offender Information Services Branch

Spring 2007 Projections

Table 2  
Parole and Outpatient Population  
Supervised in California  
June 30, 1997 through June 30, 2012

As of June 30	Total	Total Males			Male Addicts			Male Others			Total Females			Female Addicts			Female Others		
		Total	Male Felons	Male Addicts	Male Others	Total	Female Felons	Female Addicts	Female Others	Total	Female Felons	Female Addicts	Female Others						
Actual																			
1997	100,828	91,002	87,202	2,684	1,116	9,826	8,817	880	129										
1998	108,750	97,587	94,158	2,313	1,116	11,163	10,256	751	156										
1999	112,494	100,716	97,593	1,954	1,169	11,778	10,944	678	156										
2000	119,298	106,505	103,453	1,899	1,153	12,793	12,033	603	157										
2001	119,636	106,396	103,232	2,011	1,153	13,240	12,396	674	170										
2002	120,336	107,136	103,794	2,027	1,315	13,200	12,366	646	188										
2003	116,173	103,371	99,937	2,034	1,400	12,802	11,976	636	190										
2004	112,685	100,399	97,311	1,628	1,460	12,286	11,563	533	190										
2005	115,371	102,783	99,930	1,473	1,380	12,588	11,946	458	184										
2006	116,563	103,551	100,850	1,327	1,374	13,012	12,422	419	171										
Projected																			
2007	122,833	109,040	106,360	1,285	1,395	13,793	13,189	430	174										
2008	126,068	111,672	108,992	1,278	1,402	14,396	13,791	430	175										
2009	128,041	113,316	110,636	1,275	1,405	14,725	14,118	430	177										
2010	130,500	115,291	112,611	1,273	1,407	15,209	14,601	430	178										
2011	132,410	116,985	114,304	1,273	1,408	15,425	14,816	430	179										
2012	134,301	118,459	115,777	1,273	1,409	15,842	15,233	430	179										

Note: Others include co-ops and other state/federal parolees.

**K. Institution Population and Placement Needs Projections**

**Tables 3-10**

**Detail Fiscal Years 2006-07 and 2007-08**

**Fiscal Years 2006-07 through 2011-12 (Tables 5 & 6)**

Department of Corrections and Rehabilitation  
State of California  
02/13/2007

Population Projections Unit  
Estimates and Statistical Analysis Section  
Offender Information Services Branch

Spring 2007 Projections

Table 3  
Institution Population  
Fiscal Years 2006/07 through 2007/08

	Actual June 30 2006	Sep 30 2006	Dec 31 2006	Mar 31 2007	Jun 30 2007	Sep 30 2007	Dec 31 2007	Mar 31 2008	Jun 30 2008
Total Population	172,561	173,101	172,528	173,984	175,210	175,422	175,910	176,799	178,236
Men (Inc. CCC)	160,812	161,225	160,770	162,090	163,140	163,224	163,804	164,599	165,891
Women (Inc. CCC)	11,749	11,876	11,758	11,894	12,070	12,198	12,106	12,200	12,345
Total (Exc. CCC)	166,381	166,906	166,233	166,978	168,084	168,141	168,509	169,278	170,582
Men	155,301	155,699	155,144	155,883	156,843	156,837	157,327	158,032	159,233
Felons	154,105	154,524	154,000	154,708	155,681	155,688	156,170	156,863	158,076
Civil Narcotic Addicts	908	901	873	878	867	862	868	872	862
Others 1	288	274	271	297	295	287	289	297	295
Women	11,080	11,207	11,089	11,095	11,241	11,304	11,182	11,246	11,349
Felons	10,666	10,792	10,700	10,701	10,851	10,912	10,792	10,855	10,959
Civil Narcotic Addicts	366	364	345	347	344	347	345	345	344
Others 1	48	51	44	47	46	45	45	46	46
Community Correctional Centers 2	6,180	6,195	6,295	7,006	7,126	7,281	7,401	7,521	7,654
Total Males	5,511	5,526	5,626	6,207	6,297	6,387	6,477	6,567	6,658
Male Felons	5,511	5,526	5,626	6,207	6,297	6,387	6,477	6,567	6,658
Male Civil Narcotic Addicts	0	0	0	0	0	0	0	0	0
Female Felons	669	669	669	799	829	894	924	954	996

1 Others include county diagnostic cases, other state/federal prisoners, safekeepers, and JJ wards.

2 Community Correctional Center (CCC) data are based on the bed activation schedules provided by the Divisions of Adult Institutions and Adult Parole.

Note: Data through December 2006 are actual.

Population Projections Unit  
Estimates and Statistical Analysis Section  
Offender Information Services Branch

Department of Corrections and Rehabilitation  
State of California  
02/13/2007

Spring 2007 Projections

Table 4  
Average Daily Institution Population  
Fiscal Years 2006/07 through 2007/08

	FY	Sep 30	Dec 31	Mar 31	Jun 30	FY	Sep 30	Dec 31	Mar 31	Jun 30
	2006/07 Avg	2006	2006	2007	2007	2007/08 Avg	2007	2007	2008	2008
Total Population	173,159	172,427	172,868	172,744	174,598	176,193	175,361	175,663	176,204	177,544
Men (Inc. CCC)	161,349	160,672	161,086	160,986	162,654	164,020	163,216	163,527	164,037	165,300
Women (Inc. CCC)	11,810	11,755	11,782	11,758	11,944	12,173	12,145	12,137	12,168	12,245
Total (Exc. CCC)	166,615	166,234	166,623	166,070	167,532	168,792	168,146	168,322	168,743	169,958
Men	155,530	155,148	155,510	155,059	156,402	157,543	156,874	157,095	157,515	158,687
Felons	154,359	153,973	154,332	153,897	155,235	156,383	155,716	155,933	156,357	157,527
Civil Narcotic Addicts	886	902	894	872	874	868	868	872	865	868
Others 1	285	274	283	290	293	292	290	290	293	293
Women	11,085	11,086	11,113	11,011	11,130	11,250	11,272	11,228	11,229	11,270
Felons	10,689	10,685	10,714	10,619	10,739	10,858	10,879	10,836	10,838	10,880
Civil Narcotic Addicts	349	353	351	346	346	346	347	346	344	346
Others 1	46	48	48	46	44	45	46	45	46	44
Community Correctional Centers 2	6,544	6,192	6,245	6,674	7,066	7,401	7,215	7,341	7,461	7,586
Total Males	5,820	5,523	5,576	5,927	6,252	6,477	6,342	6,432	6,522	6,612
Male Felons	5,820	5,523	5,576	5,927	6,252	6,477	6,342	6,432	6,522	6,612
Male Civil Narcotic Addicts	0	0	0	0	0	0	0	0	0	0
Female Felons	725	669	669	747	814	924	873	909	939	974

1 Others include county diagnostic cases, other state/federal prisoners, safekeepers, and JJ wards.  
2 Community Correctional Center (CCC) data are based on the bed activation schedules provided by the Divisions of Adult Institutions and Adult Parole.

Note: Data through December 2006 are actual.

Population Projections Unit  
 Estimates and Statistical Analysis Section  
 Offender Information Services Branch

Department of Corrections and Rehabilitation  
 State of California  
 02/13/2007

Spring 2007 Projections

Table 5  
 Projected Placement Needs for Male Felon Institution Population  
 Fiscal Years 2006/07 through 2011/12

Fiscal Year	Fiscal Quarter	Reception Center	Level I	Level II	Level III	Level IV	Special PHU	Housing SHU	Total Housing	Grand Total
2006/07	September 30	25,357	29,285	41,875	34,175	26,315	17	3,026	3,043	160,050
	December 31	25,766	29,076	41,595	33,970	26,100	16	3,103	3,119	159,626
	March 31	27,035	29,470	41,185	33,760	26,325	20	3,120	3,140	160,915
	June 30	27,395	29,933	41,145	33,750	26,590	20	3,145	3,165	161,978
2007/08	September 30	26,805	30,325	41,110	33,775	26,860	20	3,180	3,200	162,075
	December 31	27,130	30,512	40,940	33,765	27,080	20	3,200	3,220	162,647
	March 31	27,205	30,830	40,960	33,865	27,325	20	3,225	3,245	163,430
	June 30	28,050	30,919	40,980	33,970	27,545	20	3,250	3,270	164,734
2008/09	June 30	28,010	31,417	41,230	34,675	28,490	20	3,350	3,370	167,192
2009/10	June 30	28,195	31,344	41,325	35,495	29,410	20	3,450	3,470	169,239
2010/11	June 30	28,400	31,341	41,570	36,430	30,375	20	3,555	3,575	171,691
2011/12	June 30	28,475	31,554	41,935	37,425	31,375	20	3,675	3,695	174,459

Note: These estimates assume that the male reception center population will increase proportionately with the increase in male felon intake.

Population Projections Unit  
 Estimates and Statistical Analysis Section  
 Offender Information Services Branch

Department of Corrections and Rehabilitation  
 State of California  
 02/13/2007

Spring 2007 Projections

Table 6  
 Projected Placement Needs for Total Male Institution Population  
 Fiscal Years 2006/07 through 2011/12

Fiscal Year	Fiscal Quarter	Reception Center	Level I	Level II	Level III	Level IV	Special PHU	Housing SHU	Total Housing	Grand Total
2006/07	September 30	25,631	29,285	42,776	34,175	26,315	17	3,026	3,043	161,225
	December 31	26,037	29,076	42,468	33,970	26,100	16	3,103	3,119	160,770
	March 31	27,332	29,470	42,063	33,760	26,325	20	3,120	3,140	162,090
	June 30	27,690	29,933	42,012	33,750	26,590	20	3,145	3,165	163,140
2007/08	September 30	27,092	30,325	41,972	33,775	26,860	20	3,180	3,200	163,224
	December 31	27,419	30,512	41,808	33,765	27,080	20	3,200	3,220	163,804
	March 31	27,502	30,830	41,832	33,865	27,325	20	3,225	3,245	164,599
	June 30	28,345	30,919	41,842	33,970	27,545	20	3,250	3,270	165,891
2008/09	June 30	28,305	31,417	42,090	34,675	28,490	20	3,350	3,370	168,347
2009/10	June 30	28,490	31,344	42,184	35,495	29,410	20	3,450	3,470	170,393
2010/11	June 30	28,695	31,341	42,429	36,430	30,375	20	3,555	3,575	172,845
2011/12	June 30	28,770	31,554	42,794	37,425	31,375	20	3,675	3,695	175,613

Note: These estimates assume that the male reception center population will increase proportionately with the increase in male felon intake. Reception Center includes others as defined on Table 1. Level II includes civil narcotic addicts.



Department of Corrections and Rehabilitation  
State of California  
02/13/2007

Population Projections Unit  
Estimates and Statistical Analysis Section  
Offender Information Services Branch

Spring 2007 Projections

Table 7  
Movement of Male Felon Institution Population  
Fiscal Years 2005/06 through 2007/08

Fiscal Year	Fiscal Quarter	Total Intake	From Court	PV- WNT	PV- RTC	Other Intake	Total Outgo	First Parole	PV-RTC Parole	Other Outgo	Gain/ Loss	Population End of Qtr
2005/06	Jul-Sep	30,010	10,747	4,538	14,672	53	27,930	14,379	12,959	592	1,709	153,725
	Oct-Dec	30,135	10,895	4,809	14,381	50	28,688	14,546	13,556	586	1,588	155,313
	Jan-Mar	30,874	10,609	4,836	15,380	49	28,455	14,177	13,672	606	2,290	157,603
	Apr-Jun	32,233	10,989	4,833	16,360	51	30,233	14,891	14,745	597	2,013	159,616
Total		123,252	43,240	19,016	60,793	203	115,306	57,993	54,932	2,381	7,600	
2006/07	Jul-Sep	31,354	10,508	4,698	16,088	60	30,825	15,248	14,999	578	434	160,050
	Oct-Dec	30,672	10,403	4,547	15,673	49	31,194	15,187	15,410	597	-424	159,626
	Jan-Mar	32,090	10,563	4,889	16,614	24	30,801	15,164	15,057	580	1,289	160,915
	Apr-Jun	32,520	11,007	4,833	16,644	36	31,457	15,253	15,623	581	1,063	161,978
Total		126,636	42,481	18,967	65,019	169	124,277	60,852	61,089	2,336	2,362	
2007/08	Jul-Sep	* 31,821	10,586	4,792	16,385	58	31,724	15,452	15,659	613	97	162,075
	Oct-Dec	* 32,203	10,513	4,957	16,677	56	31,631	15,102	15,957	572	572	162,647
	Jan-Mar	* 32,294	10,655	4,893	16,675	71	31,511	15,095	15,806	610	783	163,430
	Apr-Jun	* 33,298	11,058	4,902	17,279	59	31,994	15,301	16,064	629	1,304	164,734
Total		129,616	42,812	19,544	67,016	244	126,860	60,950	63,486	2,424	2,756	

\* Projected

Note: Other intake includes 'J' 'M' cases and transfers from other states.  
Other outgo includes discharges and deaths.

Department of Corrections and Rehabilitation  
State of California  
02/13/2007

Population Projections Unit  
Estimates and Statistical Analysis Section  
Offender Information Services Branch

Spring 2007 Projections

Table 8  
Movement of Female Felon Institution Population  
Fiscal Years 2005/06 through 2007/08

Fiscal Year	Fiscal Quarter	Total Intake	From Court	PV-WNT	PV-RTC	Total Outgo	First Parole	PV-RTC Parole	Other Outgo	Gain/Loss	Population End of Qtr
2005/06	Jul-Sep	3,424	1,600	418	1,406	3,065	1,828	1,195	42	399	10,927
	Oct-Dec	3,333	1,528	456	1,349	3,227	1,863	1,310	54	149	11,076
	Jan-Mar	3,371	1,576	457	1,338	3,182	1,899	1,241	42	167	11,243
	Apr-Jun	3,479	1,548	458	1,473	3,395	1,890	1,461	44	92	11,335
Total		13,607	6,252	1,789	5,566	12,869	7,480	5,207	182	807	
2006/07	Jul-Sep	3,492	1,529	482	1,481	3,377	2,026	1,301	50	126	11,461
	Oct-Dec	3,362	1,491	460	1,411	3,437	1,987	1,414	36	-92	11,369
	Jan-Mar	3,523	1,546	491	1,486	3,392	1,938	1,412	42	131	11,500
	Apr-Jun	3,679	1,607	486	1,586	3,499	2,029	1,429	41	180	11,680
Total		14,056	6,173	1,919	5,964	13,705	7,980	5,556	169	345	
2007/08	Jul-Sep	* 3,654	1,602	542	1,510	3,528	1,995	1,471	62	126	11,806
	Oct-Dec	* 3,423	1,529	470	1,424	3,513	2,016	1,457	40	-90	11,716
	Jan-Mar	* 3,673	1,582	505	1,586	3,580	2,085	1,451	44	93	11,809
	Apr-Jun	* 3,721	1,640	498	1,583	3,575	2,065	1,457	53	146	11,955
Total		14,471	6,353	2,015	6,103	14,196	8,161	5,836	199	275	

\* Projected

Note: Other outgo includes discharges and deaths.

Population Projections Unit  
 Estimates and Statistical Analysis Section  
 Offender Information Services Branch

Department of Corrections and Rehabilitation  
 State of California  
 02/13/2007

Spring 2007 Projections

Table 9  
 Movement of Male Civil Narcotic Addict Institution Population  
 Fiscal Years 2005/06 through 2007/08

Fiscal Year	Fiscal Quarter	Total Intake	From Court	Outpatients Returned	Total Outgo	Outpatient Status	Other Outgo	Gain/Loss	Population End of Qtr
2005/06	Jul-Sep	357	159	198	339	242	97	12	978
	Oct-Dec	318	154	164	322	255	67	-9	969
	Jan-Mar	329	155	174	374	311	63	-55	914
	Apr-Jun	345	164	181	353	295	58	-6	908
Total		1,349	632	717	1,388	1,103	285	-58	
2006/07	Jul-Sep	331	148	183	332	268	64	-7	901
	Oct-Dec	279	141	138	332	275	57	-28	873
	Jan-Mar	374	219	155	369	313	56	5	878
	Apr-Jun	359	207	152	370	288	82	-11	867
Total		1,343	715	628	1,403	1,144	259	-41	
2007/08	Jul-Sep	*	210	154	369	296	73	-5	862
	Oct-Dec	*	375	158	369	313	56	6	868
	Jan-Mar	*	371	157	367	306	61	4	872
	Apr-Jun	*	359	152	369	289	80	-10	862
Total		1,469	848	621	1,474	1,204	270	-5	

\* Projected

Note: Other outgo includes discharges and deaths.

Population Projections Unit  
Estimates and Statistical Analysis Section  
Offender Information Services Branch

Department of Corrections and Rehabilitation  
State of California  
02/13/2007  
Spring 2007 Projections

Table 10  
Movement of Female Civil Narcotic Addict Institution Population  
Fiscal Years 2005/06 through 2007/08

Fiscal Year	Fiscal Quarter	Total Intake	From Court	Outpatients Returned	Total Outgo	Outpatient Status	Other Outgo	Gain/Loss	Population End of Qtr
2005/06	Jul-Sep	97	65	32	71	56	15	27	310
	Oct-Dec	98	70	28	68	60	8	34	343
	Jan-Mar	90	64	26	93	76	17	-4	340
	Apr-Jun	116	88	28	88	72	16	26	366
Total		401	287	114	320	264	56	83	
2006/07	Jul-Sep	89	61	28	87	66	21	-2	364
	Oct-Dec	76	54	22	92	83	9	-18	345
	Jan-Mar	89	64	25	87	69	18	2	347
	Apr-Jun	84	61	23	87	66	21	-3	344
Total		338	240	98	353	284	69	-21	
2007/08	Jul-Sep	90	65	25	87	73	14	3	347
	Oct-Dec	85	62	23	87	68	19	-2	345
	Jan-Mar	87	63	24	87	69	18	0	345
	Apr-Jun	86	62	24	87	67	20	-1	344
Total		348	252	96	348	277	71	0	

\* Projected

Note: Other outgo includes discharges and deaths.

**L. Two Year Parole and Outpatient Population Projections**

**Tables 11-16**

**Detail Fiscal Years 2006-07 and 2007-08**

Department of Corrections and Rehabilitation  
State of California  
02/13/2007

Population Projections Unit  
Estimates and Statistical Analysis Section  
Offender Information Services Branch

Spring 2007 Projections

Table 11  
California Supervised Parole and Outpatient Population  
Fiscal Years 2006/07 through 2007/08

	Actual June 30 2006	Sep 30 2006	Dec 31 2006	Mar 31 2007	Jun 30 2007	Sep 30 2007	Dec 31 2007	Mar 31 2008	Jun 30 2008
Total Men and Women	116,563	117,983	121,808	122,444	122,833	124,148	124,784	125,906	126,068
Felons	113,272	114,775	118,551	119,144	119,549	120,866	121,491	122,608	122,783
Outpatients	1,746	1,658	1,728	1,735	1,715	1,711	1,719	1,724	1,708
Others 1	1,545	1,550	1,529	1,565	1,569	1,571	1,574	1,574	1,577
Total Men	103,551	104,812	108,094	108,695	109,040	110,299	110,800	111,678	111,672
Felons	100,850	102,185	105,451	106,001	106,360	107,624	108,114	108,987	108,992
Outpatients	1,327	1,252	1,294	1,302	1,285	1,278	1,287	1,292	1,278
Others 1	1,374	1,375	1,349	1,392	1,395	1,397	1,399	1,399	1,402
Total Women	13,012	13,171	13,714	13,749	13,793	13,849	13,984	14,228	14,396
Felons	12,422	12,590	13,100	13,143	13,189	13,242	13,377	13,621	13,791
Outpatients	419	406	434	433	430	433	432	432	430
Others 1	171	175	180	173	174	174	175	175	175

1 Others include co-ops and other state/federal parolees.

Note: Data through December 2006 are actual.

Population Projections Unit  
Estimates and Statistical Analysis Section  
Offender Information Services Branch

Department of Corrections and Rehabilitation  
State of California  
02/13/2007

Spring 2007 Projections

Table 12  
Average Daily Parole and Outpatient Population  
Fiscal Years 2006/07 through 2007/08

	FY	2006/07	Sep 30	Dec 31	Mar 31	Jun 30	FY	2007/08	Sep 30	Dec 31	Mar 31	Jun 30
	Avg	2006	2006	2007	2007	2007	Avg	2007/08	2007	2007	2008	2008
Total Men and Women	120,717	117,677	119,993	122,461	122,735	124,862	124,862	123,492	124,484	125,469	126,002	
Felons	117,456	114,423	116,784	119,178	119,440	121,570	121,570	120,202	121,189	122,182	122,707	
Outpatients	1,706	1,707	1,663	1,725	1,727	1,718	1,718	1,720	1,723	1,712	1,718	
Others 1	1,555	1,546	1,546	1,559	1,567	1,573	1,573	1,570	1,572	1,575	1,576	
Total Men	107,168	104,548	106,537	108,677	108,910	110,811	110,811	109,711	110,560	111,324	111,647	
Felons	104,506	101,885	103,917	105,999	106,221	108,125	108,125	107,028	107,870	108,643	108,960	
Outpatients	1,281	1,289	1,248	1,293	1,295	1,287	1,287	1,287	1,292	1,281	1,286	
Others 1	1,382	1,375	1,373	1,384	1,394	1,399	1,399	1,396	1,398	1,400	1,401	
Total Women	13,549	13,128	13,456	13,785	13,825	14,051	14,051	13,781	13,924	14,145	14,355	
Felons	12,951	12,539	12,868	13,178	13,219	13,444	13,444	13,173	13,318	13,539	13,747	
Outpatients	425	418	416	432	432	432	432	433	432	431	432	
Others 1	173	172	173	174	173	175	175	174	174	175	175	

1 Others include co-ops and other state/federal parolees.

Note: Data through December 2006 are actual.

Department of Corrections and Rehabilitation  
State of California  
02/13/2007

Population Projections Unit  
Estimates and Statistical Analysis Section  
Offender Information Services Branch

Spring 2007 Projections

Table 13  
Movement of Male Felon Parole Population  
Fiscal Years 2005/06 through 2007/08

Fiscal Year	Fiscal Quarter	Total Intake	Paroled	Reinstated	Other Intake	Total Outgo	PV- WNT	PV- RTC	PALS	Other Outgo	Gain/Loss	Population End of Qtr
2005/06	Jul-Sep	35,702	27,302	7,989	411	36,822	4,273	12,355	11,333	8,861	-893	99,037
	Oct-Dec	36,097	28,064	7,629	404	35,218	4,547	12,090	10,198	8,383	737	99,774
	Jan-Mar	35,472	27,818	7,251	403	34,979	4,592	13,069	9,110	8,208	412	100,186
	Apr-Jun	37,581	29,601	7,596	384	36,869	4,565	13,928	10,270	8,106	664	100,850
Total		144,852	112,785	30,465	1,602	143,888	17,977	51,442	40,911	33,558	920	
2006/07	Jul-Sep	37,991	30,222	7,495	274	36,826	4,449	13,838	10,544	7,995	1,335	102,185
	Oct-Dec	38,332	30,573	7,573	186	35,272	4,338	13,519	9,904	7,511	3,266	105,451
	Jan-Mar	38,194	30,174	7,799	221	37,644	4,642	14,351	10,374	8,277	550	106,001
	Apr-Jun	38,777	30,847	7,725	205	38,418	4,572	14,388	10,576	8,882	359	106,360
Total		153,294	121,816	30,592	886	148,160	18,001	56,096	41,398	32,665	5,510	
2007/08	Jul-Sep	39,170	31,081	7,860	229	37,906	4,513	13,985	10,547	8,861	1,264	107,624
	Oct-Dec	39,412	31,027	8,145	240	38,922	4,690	14,169	11,134	8,929	490	108,114
	Jan-Mar	39,237	30,865	8,140	232	38,364	4,634	14,262	10,933	8,535	873	108,987
	Apr-Jun	39,688	31,332	8,103	253	39,683	4,632	14,831	11,031	9,189	5	108,992
Total		157,507	124,305	32,248	954	154,875	18,469	57,247	43,645	35,514	2,632	

\* Projected

Note: Other intake includes transfers direct from court, interstate parole unit (ISPU), and co-ops.  
PALS are parolees-at-large with warrant issued (absconded from parole supervision).  
Other outgo includes transfers to ISPU, discharges and deaths.



Department of Corrections and Rehabilitation  
State of California  
02/13/2007

Population Projections Unit  
Estimates and Statistical Analysis Section  
Offender Information Services Branch

Spring 2007 Projections

Table 14  
Movement of Female Felon Parole Population  
Fiscal Years 2005/06 through 2007/08

Fiscal Year	Fiscal Quarter	Total Intake	Paroled	Reinstated	Other Intake	Total Outgo	PV- WNT	PV- RTC	PALS	Other Outgo	Gain/Loss	Population End of Qtr
2005/06	Jul-Sep	4,105	3,022	1,021	62	4,296	396	1,171	1,463	1,266	-187	11,759
	Oct-Dec	4,246	3,169	1,012	65	4,076	437	1,119	1,307	1,213	125	11,884
	Jan-Mar	4,175	3,137	979	59	3,896	434	1,113	1,183	1,166	273	12,157
	Apr-Jun	4,473	3,345	1,070	58	4,203	433	1,205	1,395	1,170	265	12,422
Total		16,999	12,673	4,082	244	16,471	1,700	4,608	5,348	4,815	476	
2006/07	Jul-Sep	4,478	3,324	1,107	47	4,322	441	1,255	1,400	1,226	168	12,590
	Oct-Dec	4,515	3,401	1,097	17	4,073	427	1,168	1,362	1,116	510	13,100
	Jan-Mar	* 4,459	3,347	1,087	25	4,416	457	1,257	1,454	1,248	43	13,143
	Apr-Jun	* 4,565	3,450	1,089	26	4,519	459	1,321	1,471	1,268	46	13,189
Total		18,017	13,522	4,380	115	17,330	1,784	5,001	5,687	4,858	767	
2007/08	Jul-Sep	* 4,656	3,461	1,170	25	4,603	506	1,240	1,578	1,279	53	13,242
	Oct-Dec	* 4,667	3,469	1,168	30	4,532	445	1,200	1,511	1,376	135	13,377
	Jan-Mar	* 4,830	3,534	1,266	30	4,586	475	1,330	1,534	1,247	244	13,621
	Apr-Jun	* 4,784	3,514	1,235	35	4,614	464	1,321	1,522	1,307	170	13,791
Total		18,937	13,978	4,839	120	18,335	1,890	5,091	6,145	5,209	602	

\* Projected

Note: Other intake includes transfers direct from court, interstate parole unit (ISPU), and co-ops.  
PALS are parolees-at-large with warrant issued (absconded from parole supervision).  
Other outgo includes transfers to ISPU, discharges and deaths.

Population Projections Unit  
 Estimates and Statistical Analysis Section  
 Offender Information Services Branch

Department of Corrections and Rehabilitation  
 State of California  
 02/13/2007

Spring 2007 Projections

Table 15  
 Movement of Male Civil Narcotic Addict Outpatient Population  
 Fiscal Years 2005/06 through 2007/08

Fiscal Year	Fiscal Quarter	Total Intake	Released from Institution	Reinstated	Total Outgo	PV- WNT	PV- RTC	RALS	Other Outgo	Gain/Loss	Population End of Qtr
2005/06	Jul-Sep	292	242	50	382	5	180	76	121	-89	1,384
	Oct-Dec	295	255	40	312	7	141	51	113	-16	1,368
	Jan-Mar	362	311	51	350	1	165	53	131	14	1,382
	Apr-Jun	336	295	41	389	3	172	58	156	-55	1,327
Total		1,285	1,103	182	1,433	16	658	238	521	-146	
2006/07	Jul-Sep	310	268	42	386	6	156	73	151	-75	1,252
	Oct-Dec	310	275	35	267	6	121	48	92	42	1,294
	Jan-Mar	* 360	313	47	352	3	143	65	141	8	1,302
	Apr-Jun	* 336	288	48	353	3	140	54	156	-17	1,285
Total		1,316	1,144	172	1,358	18	560	240	540	-42	
2007/08	Jul-Sep	* 344	296	48	351	3	142	56	150	-7	1,278
	Oct-Dec	* 361	313	48	352	3	146	59	144	9	1,287
	Jan-Mar	* 354	306	48	349	3	145	58	143	5	1,292
	Apr-Jun	* 337	289	48	351	3	140	54	154	-14	1,278
Total		1,396	1,204	192	1,403	12	573	227	591	-7	

\* Projected

Note: RALS are releasees-at-large with warrant issued (absconded from outpatient supervision).  
 Other outgo includes discharges and deaths.

Department of Corrections and Rehabilitation  
State of California  
02/13/2007

Population Projections Unit  
Estimates and Statistical Analysis Section  
Offender Information Services Branch

Spring 2007 Projections

Table 16  
Movement of Female Civil Narcotic Addict Outpatient Population  
Fiscal Years 2005/06 through 2007/08

Fiscal Year	Fiscal Quarter	Total Intake	Released from Institution	Reinstated	Total Outgo	PV- WNT	PV- RTC	RAALS	Other Outgo	Gain/Loss	Population End of Qtr
2005/06	Jul-Sep	65	56	9	86	0	29	15	42	-23	435
	Oct-Dec	72	60	12	74	2	25	11	36	-1	434
	Jan-Mar	80	76	4	79	1	24	8	46	0	434
	Apr-Jun	84	72	12	99	0	25	14	60	-15	419
Total		301	264	37	338	3	103	48	184	-39	
2006/07	Jul-Sep	78	66	12	92	0	26	12	54	-13	406
	Oct-Dec	87	83	4	60	0	19	5	36	28	434
	Jan-Mar	75	69	6	76	0	22	10	44	-1	433
	Apr-Jun	72	66	6	75	0	20	9	46	-3	430
Total		312	284	28	303	0	87	36	180	11	
2007/08	Jul-Sep	79	73	6	76	0	22	9	45	3	433
	Oct-Dec	74	68	6	75	0	20	9	46	-1	432
	Jan-Mar	75	69	6	75	0	21	9	45	0	432
	Apr-Jun	73	67	6	75	0	21	9	45	-2	430
Total		301	277	24	301	0	84	36	181	0	

\* Projected

Note: RALS are releases-at-large with warrant issued (absconded from outpatient supervision).  
Other outgo includes discharges and deaths.