



# SPRING 2004 POPULATION PROJECTIONS



2004  
-  
2009

# CALIFORNIA DEPARTMENT OF CORRECTIONS

**J. S. WOODFORD**

*Director*

**KATHY M. KINSER**

*Chief Deputy Director  
Support Services*

**E. A. MITCHELL**

*Deputy Director  
Policy and Evaluation Division*

**ARTHUR CHUNG**

*Chief  
Offender Information Services Branch*

**JAY ATKINSON**

*Chief  
Estimates and Statistical Analysis Section*

**JACK LEONARD**

*Operations Research Specialist III*



## **Population Projections Unit**

**JACQUI CODER**

*Research Manager I*

**JUNE DEVOE**

*Research Analyst II*

**SHELLEY BUTTLER**

*Research Analyst II*

**LORAN GARCIA**

*Staff Services Analyst*

Cover: California Medical Facility  
California State Prison, Solano

## **ACKNOWLEDGMENTS**

Although the Estimates and Statistical Analysis Section is responsible for the semiannual publication of the Population Projections, others in the Department of Corrections made significant contributions that are greatly appreciated. Among those involved in the projections were (in alphabetical order) the:

- Board of Prison Terms
- Information Systems Division
- Institutions Division
- Office of Budget Management
- Parole and Community Services Division

**TABLE OF CONTENTS**

**PAGE**

---

**I. INTRODUCTION ----- 1**

**A. Factors Affecting Population ----- 3**

**B. Comparison of Spring 2004 with Fall 2003 Projections ----- 4**

**II. PREMISES ----- 7**

**C. Felon Admissions ----- 9**

**D. Significant Chaptered Legislation and Initiatives ----- 10**

**E. The Work Incentive Program (WIP) ----- 12**

**F. Court Sentences ----- 12**

**G. Placement Need Projections ----- 13**

**H. Parole Violators ----- 13**

**I. Felon Parole Population ----- 13**

**III. SPRING 2004 POPULATION PROJECTIONS ----- 17**

**J. Six Year Population Projections ----- 19**

**K. Two Year Institution Population and Placement Needs Projections ----- 23**

**L. Two Year Parole and Outpatient Population Projections ----- 33**

# I. INTRODUCTION

---

## INTRODUCTION

This document contains the California Department of Corrections' (CDC) projections of institution, parole, and outpatient populations for fiscal years (FY) 2003-04 through 2008-09. The projections are based upon the most current available data and include existing laws and regulations as well as any signed legislation that will come into effect during the current projections cycle. The projections do not include proposed legislation, programs, propositions, or policy changes that have not been signed or affirmed as of the completion of the projection process.

The Spring 2004 Projections include budget reduction programs associated with the FY 2003-04 Budget Act and implementation schedules as of January 5, 2004.

### A. Factors Affecting Population

- On December 31, 2003, the total institution population was 161,785. This is 2,090 higher than the December 31, 2002, population. This is the result of an increase in admissions from court, offset by a decrease in parolees returned to custody.
- The number of new admissions from court during FY 2002-03 was 43,245, reflecting a 7.8 percent growth from the previous fiscal year. This is in contrast to five years of absolute decline. Over the six-month period from July through December 2003, admissions increased by 13.8 percent when compared to the same time period a year ago.
- There were 30,913 parole violators returned to custody over the last six months, a decrease of 5,765 (15.7 percent) when compared to the same time period a year ago. The rate of return has declined from approximately 53.0 to approximately 45.0 over the same time periods.
- The parole population on December 31, 2003, was 114,136, or 3,002 lower than the December 31, 2002, parole population. This is the result of the prior years of absolute decline in new admissions mentioned above, and an increase in rate of discharges from parole over the last four years, offset by the decrease in returns to prison.

**B. Comparison of Spring 2004 with Fall 2003 Projections**

**1. Institution Population**

In the Fall 2003 forecast, the total institution population was expected to be 162,042 by December 31, 2003, which is 257 higher than the actual population of 161,785. The difference is due primarily to fewer parolees returned to custody, partially offset by more new admissions than expected.

The following table compares the Spring 2004 Population Projections to the Fall 2003 Projections.

Table A

Comparison of Spring 2004 with Fall 2003 Projections  
Institution Population  
June 30, 2004 through June 30, 2009

<u>Year End</u> <u>June 30</u>	<u>Spring 2004</u> <u>Projections</u>	<u>Fall 2003</u> <u>Projections</u>	<u>Difference</u>
Dec. 31, 2003	161,785*	162,042	-257
2004	160,122	163,536	-3,414
2005	157,218	163,620	-6,402
2006	156,952	163,347	-6,395
2007	156,889	163,511	-6,622
2008	156,884	163,727	-6,843
2009	157,623	163,987	-6,364

\* Actual

The institution population is projected to be significantly lower than projected in Fall 2003, primarily due to the anticipated impact of the budget reduction programs. Please see Section II.D. for a detailed explanation of these programs. The impact of these programs, however, is offset by an expected increase in admissions from court over the course of the projection cycle.



**2. Parole Population**

In the Fall 2003 Projections, the parole population was expected to be 114,594 on December 31, 2003, which is 458 higher than the actual population for that date. This difference is due mainly to more discharges and suspensions from parole, offset by fewer parolees returning to custody and more releases from prison.

Table B

Comparison of Spring 2004 with Fall 2003 Projections  
Parole Population  
June 30, 2004 through June 30, 2009

---



---

<u>Year End</u> <u>June 30</u>	<u>Spring 2004</u> <u>Projections</u>	<u>Fall 2003</u> <u>Projections</u>	<u>Difference</u>
Dec. 31, 2003	114,136*	114,594	-458
2004	115,475	112,019	3,456
2005	117,069	110,631	6,438
2006	113,111	110,077	3,034
2007	109,854	109,342	512
2008	109,070	109,265	-195
2009	107,087	108,682	-1,595

\* Actual

---



---

The parole population is projected to be higher than the Fall Projections in the beginning of the projection cycle. This is due to the anticipated impact of the budget reduction programs, which will decrease the number of returns to custody and increase the number of first releases to parole. As these parolees continue on parole, they will be discharged. This will result in the population decreasing, eventually declining below the level of that projected in the Fall.

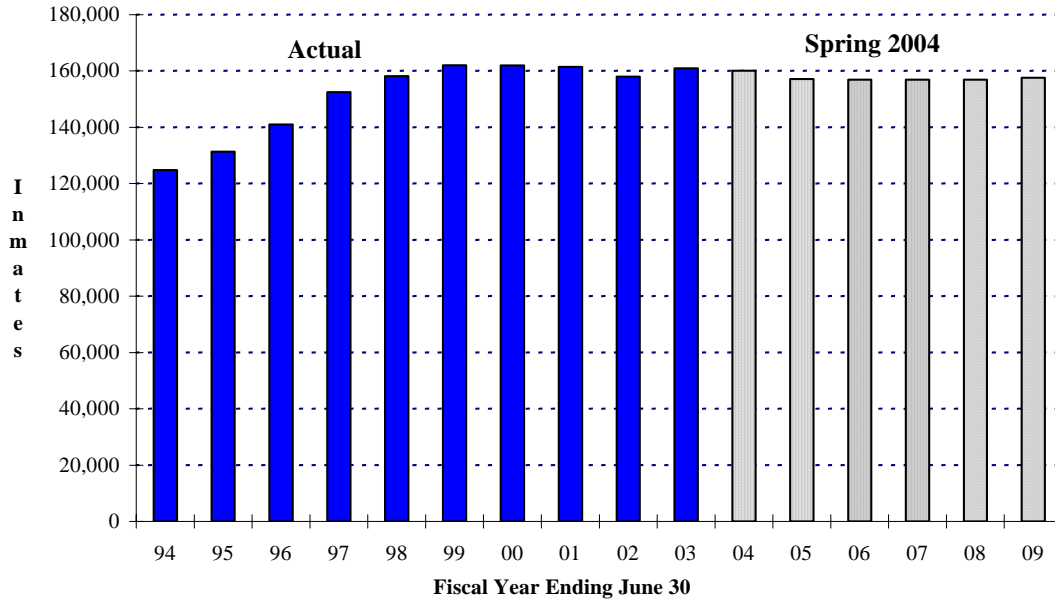
**3. Other Populations**

The Civil Narcotic Addict (CNA) institution population was 1,423 on December 31, 2003, or 245 higher than projected in the Fall Projections. It is now estimated that the CNA population will be 1,269 on June 30, 2004, or 269 higher than the Fall Projections.

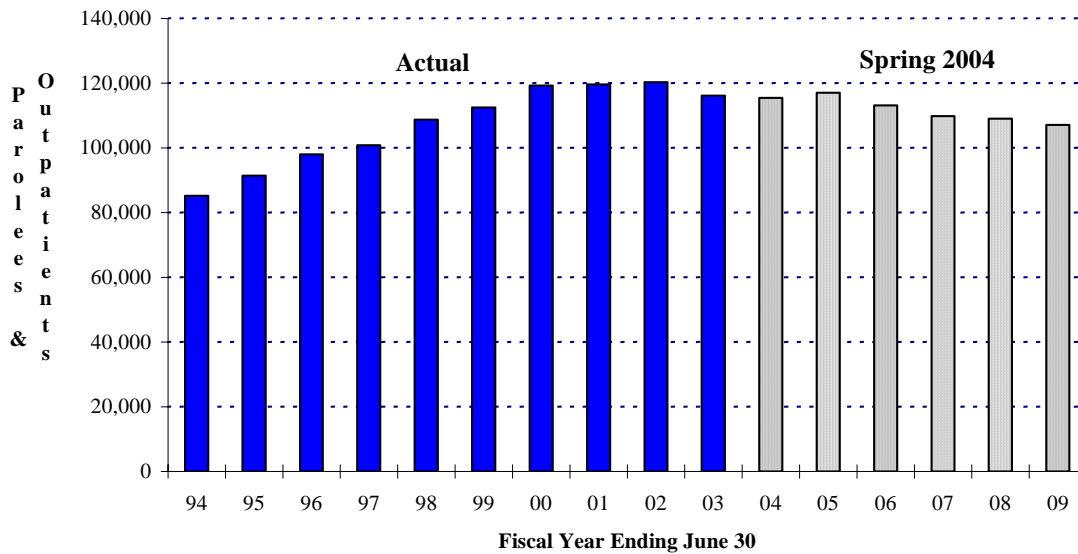
The parole outpatient population on December 31, 2003, was 2,327, which is equal to the projected population. It is estimated that the parole outpatient population will be 2,039 on June 30, 2004, which is 60 more than the Fall Projections.

Figures 1 and 2 graphically display the Spring 2004 Projections for the institution and parole and outpatient populations. Figure 1 shows the actual and projected institution population, while Figure 2 shows the actual and projected California supervised parole and outpatient populations. Both figures are for FY 1993-94 through 2008-09.

**Figure 1**  
**Total Institution Population**  
**Fiscal Years 1993-94 through 2008-09**



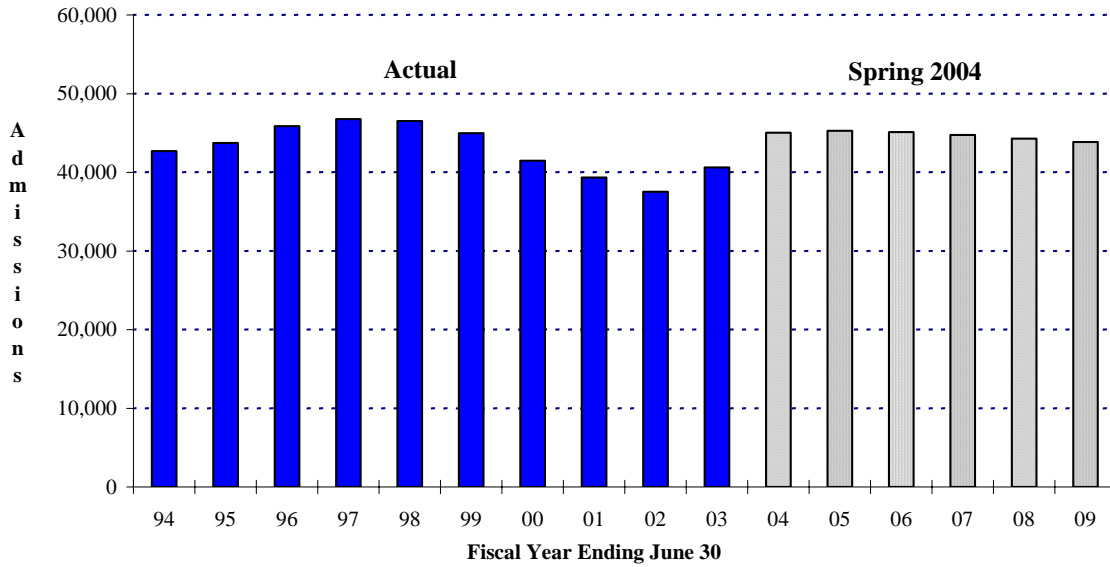
**Figure 2**  
**Total Parole Population**  
**Fiscal Years 1993-94 through 2008-09**



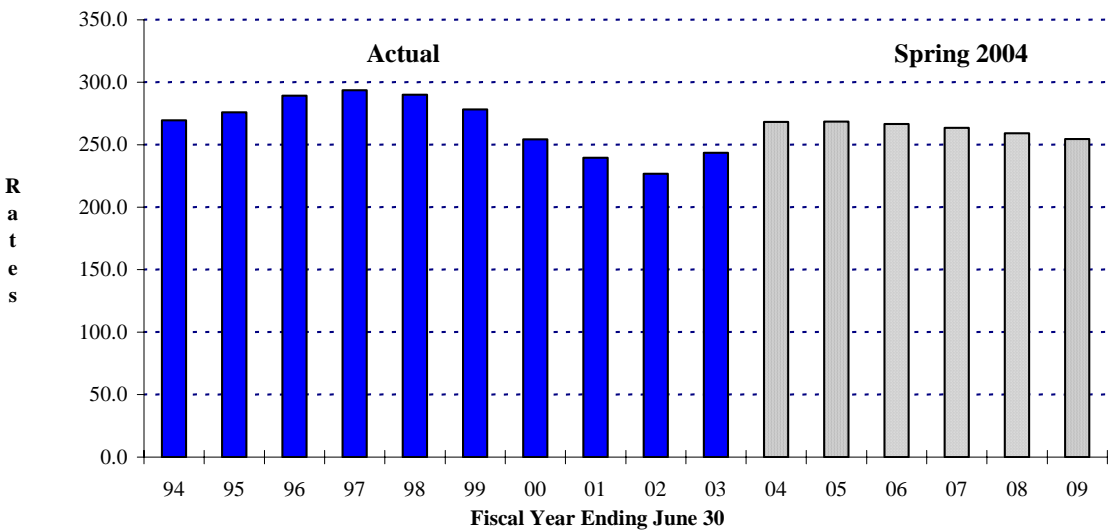
## II. PREMISES

---

**Figure 3**  
**Total Felon Admissions**  
**Actual and Projected**  
**Fiscal Years 1993-94 through 2008-09**



**Figure 4**  
**Total Felon Admission Rates**  
**Actual and Projected**  
**Fiscal Years 1993-94 through 2008-09**



**PREMISES**

Figures 3 and 4 on the preceding page display the Spring 2004 Projections for felon admissions. Figure 3 shows the actual and projected felon admissions, while Figure 4 shows the actual and projected felon admission rates per 100,000 California residents, aged 18-49. Both figures are for FY 1993-94 through FY 2008-09.

**C. Felon Admissions**

Table C, below, summarizes actual felon admissions to the CDC prisons from FY 1993-94 through FY 2002-03, while Table D displays the projected felon admissions for FY 2003-04 through FY 2008-09. Consistent with past practice, admission rates displayed in Tables C and D are expressed as the number of felon admissions to prison from court per 100,000 California residents, aged 18-49.

Table C

Actual Total Felon Admissions  
Fiscal Years 1993-94 through 2002-03

<u>Fiscal Year</u>	<u>Number of CDC Felon Admissions*</u>	<u>State Population Aged 18-49 (In Thousands)</u>	<u>Admission Rate**</u>
1993-94	42,713	15,850.2	269.5
1994-95	43,707	15,844.2	275.9
1995-96	45,876	15,860.8	289.2
1996-97	46,750	15,930.4	293.5
1997-98	46,511	16,053.8	289.7
1998-99	44,983	16,184.9	277.9
1999-00	41,469	16,303.3	254.4
2000-01	39,351	16,420.3	239.6
2001-02	37,519	16,549.4	226.7
2002-03	40,613	16,676.3	243.5

\* Not including CYA "M" cases, other state/federal admissions, or direct admissions to parole.

\*\* Number of CDC felon admissions per 100,000 California state residents, aged 18-49.

The decline in admissions for the prior five fiscal years was reversed over the last fiscal year. Felon admissions for FY 2002-03 were 40,613, up 8.3 percent from FY 2001-02. This compares to declines of approximately 4.9 percent in each of the previous two fiscal years.

In the last six months, July to December 2003 total felon admissions were 22,030, or 14.5 percent more than admissions for the same time period one year ago. It should be noted that the female felon admissions increased by 22 percent during this time period.

As shown in Table D, below, the Spring 2004 felon admissions projection is higher than the Fall 2003 Projections throughout the projection cycle. This increase is due to the fact that admissions for the last six months were 2,040 more than anticipated in the Fall Projections.

Admissions are projected based on current trends, the estimated impact of seasonality and projected state population aged 18-49.

Table D

Projected Total Felon Admissions  
Fiscal Years 2003-04 through 2008-09

---



---

<u>Fiscal Year</u>	<u>Spring 2004</u>	<u>Fall 2003</u>	<u>Difference</u>	<u>Rate</u>
2003-04	45,035	40,159	4,876	268.3
2004-05	45,284	39,578	5,706	268.5
2005-06	45,097	39,110	5,987	266.6
2006-07	44,741	38,719	6,022	263.4
2007-08	44,298	38,404	5,894	259.2
2008-09	43,850	38,160	5,690	254.5

---



---

**D. Significant Chaptered Legislation and Initiatives**

**1. FY 2003-04 Budget Reduction Programs**

- **Restructure of Educational and Vocational Programs:** Provides a “bridging” education program to inmates in Reception Centers (RC) and in general population (GP), who are eligible to receive day-for-day credit. Partial implementation began on November 1, 2003, for GP inmates and on February 15, 2004, for RC inmates.
- **Mental Health Continuum:** Expands the existing mental health treatment program to provide pre-release and enhanced community treatment for Enhanced Outpatient Program and Correctional Clinical Case Management inmates. Implementation begins on March 1, 2004.
- **Pre-release and Re-entry Programs:** Provide various programs to parolees designed to reduce parole revocations by five percent. Implementation begins on March 1, 2004, with first impact realized on November 1, 2004, due to 240-day program.
- **Substance Abuse Treatment Control Unit and Community Detention:** Provide alternative treatments/sanctions for parole violators rather than returning to custody. Implementation begins February/March 2004.

## 2. Legislation

The following legislative bills were chaptered and will have an impact on the state prison system. However, because the impact of the length of confinement could not be estimated or was insignificant, these bills are not included in the Spring 2004 Projections.

- Chapter 262, Statutes of 2003 [Assembly Bill (AB) 134, Cohn], creates a new alternative felony/misdemeanor for any person convicted of inflicting corporal injury, against a person with whom he or she had a specified relationship, within seven years of a previous conviction of battery against a person with whom he or she had a specified relationship.
- Chapter 619, Statutes of 2003 (AB 158, Runner), amends current law and creates new possession laws as they relate to the intent to manufacture various controlled substances.
- Chapter 620, Statutes of 2003 (AB 233, Cogdill), Requires a sentencing court to consider as an aggravating factor the fact that a minor resided in a structure in which methamphetamine was manufactured.
- Chapter 490, Statutes of 2003 (AB 319, Frommer), broadens the scope of the law restricting ownership of a weapon until the age of 30 for any ward of a juvenile court who has committed one of specified offenses to include purchase or receipt of a firearm. Two or more violations is a felony.
- Chapter 543, Statutes of 2003 (AB 1131, Jackson), broadens the scope of crimes against elders or dependent adults to include forgery, fraud, and/or identity theft.
- Chapter 495, Statutes of 2003 (AB 1290, Jackson), broadens the scope of persons who are currently prohibited from owning or possessing any firearm by including purchasing or receiving any firearm.
- Chapter 700, Statutes of 2003 [Senate Bill (SB) 3, Burton], provides that a person who has been declared to be mentally retarded cannot receive a death sentence for first degree murder.
- Chapter 499, Statutes of 2003 (SB 238, Perata), expands prohibitions for possessing certain firearms and/or deadly weapons.
- Chapter 540, Statutes of 2003 (SB 879, Margett), adds to the list of persons who are required to register as sex offenders.
- Chapter 125, Statutes of 2003 (SB 968, Bowen), broadens the scope of criminal profiteering activity by adding fraud or theft against the state's beverage container recycling program.

**E. The Work Incentive Program (WIP)**

This program allows eligible inmates to earn up to a six-month reduction per year in sentence length. The WIP applies to all felons who committed their offenses on or after January 1, 1983, and to felons who committed their offenses before January 1, 1983, who chose to participate. Approximately 73 percent of the June 30, 2000, eligible population was earning one-half sentence reduction, and participation is expected to continue at that level throughout the projection period. The Three Strikes Law limits credit-earning to 20 percent for affected inmates. The Penal Code also limits persons who have been convicted of any violent felony to no more than a 15 percent sentence reduction.

**F. Court Sentences**

As shown in Table E, the average sentence for newly admitted felons and parole violators returned with new terms (PV-WNT) was 52.9 months for FY 2002-03. For the seventh consecutive year, the average work incentive credit stabilized at 12 months. The anticipated time to serve continued to decline to approximately 34 months.

Table E  
Average Sentence and Credits  
For Felon New Admissions and PV-WNTs  
(in months)

<u>Fiscal Year</u>	<u>Sentence</u> <sup>1</sup>	<u>Pre-confinement Credits</u>	<u>WIP Credits</u> <sup>2</sup>	<u>Time to Serve</u>
1993-94	47.6	6.4	17.6	23.6
1994-95	51.0	6.9	15.0	29.1
1995-96	54.1	7.1	13.0	34.0
1996-97	56.1	7.1	12.6	36.4
1997-98	54.4	6.8	12.4	35.2
1998-99	54.7	6.8	12.5	35.4
1999-00	54.4	6.9	12.5	34.9
2000-01	53.3	7.0	12.0	34.3
2001-02	53.6	7.1	12.1	34.4
2002-03	52.9	7.1	12.0	33.8

<sup>1</sup> Includes third-strike and other life commitments.

<sup>2</sup> Work Incentive Program credits based on eligibility.



**G. Placement Need Projections**

As in the Fall 2003 Projections, the Spring 2004 Projections of institution bed needs, by level, consider both inmate classification score level and administrative determinants, such as institutional security and public safety, as specified in Section 62010 of the California Department of Corrections' Department Operations Manual. It is assumed that the male felon reception center population will fluctuate proportionately with the changes in male felon intake. Special housing projections assume a constant proportion of the number of inmates of each classification level in each of these categories over the projection period. The projections do not consider the impact of operational changes, such as the need to single-cell Level IV inmates in the Enhanced Outpatient Program, or the increase in indeterminate Security Housing Unit (SHU) terms. Each of these changes in policy or programs could result in the need for additional Level IV and SHU beds.

**H. Parole Violators**

For the six-month period, July to December 2003 there were 27,940 male felon parole violators returned to custody or pending parole revocation (PV-RTC/PendRev), 1,025 fewer than projected in the Fall 2003 Projections. The corresponding return rate was 47.9 (1.6 lower than projected). The Spring 2004 Projections assume the PV-RTC/PendRev rate will be approximately 15.0 points lower than projected in the Fall 2003 Projections, due to the impact of the budget reduction programs.

There were 7,339 male felon PV-WNTs for the same July to December 2003 period, 203 less than projected in the Fall 2003 Projections. The corresponding male felon PV-WNT rate was 12.6, less than 1.0 point higher than projected. The Spring 2004 Projections assume the PV-WNT rate will be about the same as projected in the Fall 2003 Projections.

The graphs on the following pages illustrate actual and projected parole return numbers and rates. Figure 5 displays the actual number of male felon parole violator returns by quarter since June 1994. As shown in this chart, from June 1997 through December 2002 the number of PV-RTC/PendRev returns was between 15,000 and 18,000. Beginning in 2003, the number of returns decreased and stayed below 15,000. Figure 6 shows the male felon PV-RTC/PendRev rates by quarter from June 1994 to June 2009 while Figure 7 tracks the male felon PV-WNT rates for the same time period.

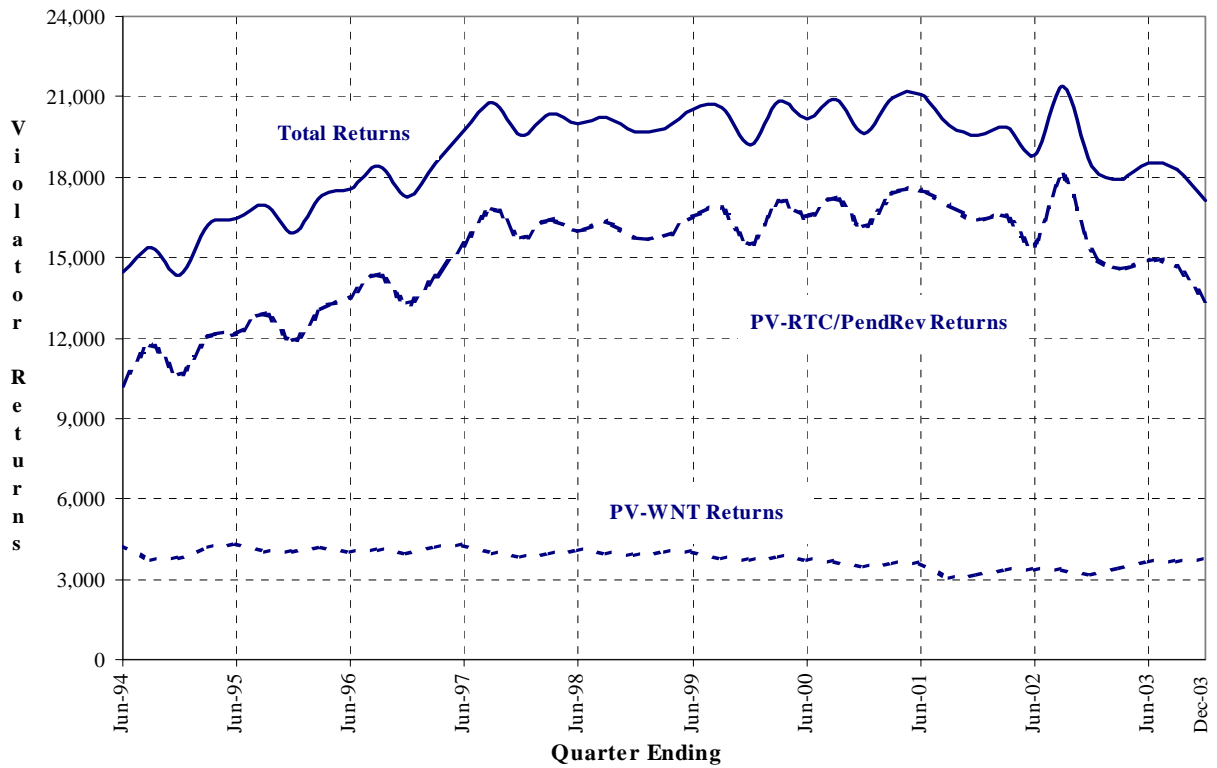
**I. Felon Parole Population**

On December 31, 2003, the felon parole population was 110,173, which is 500 lower than projected in Fall 2003. Between July and December 2003 this population decreased by 1,740.

There were 18,263 male felon parolees discharged from parole over the last six months, 1,558 more than projected in Fall 2003. The discharge rate was 31.8 or 3.0 higher than projected. The Spring 2004 Projections assume that the male felon discharge rate will be approximately 3.5 points higher than projected in the Fall 2003 Projections.

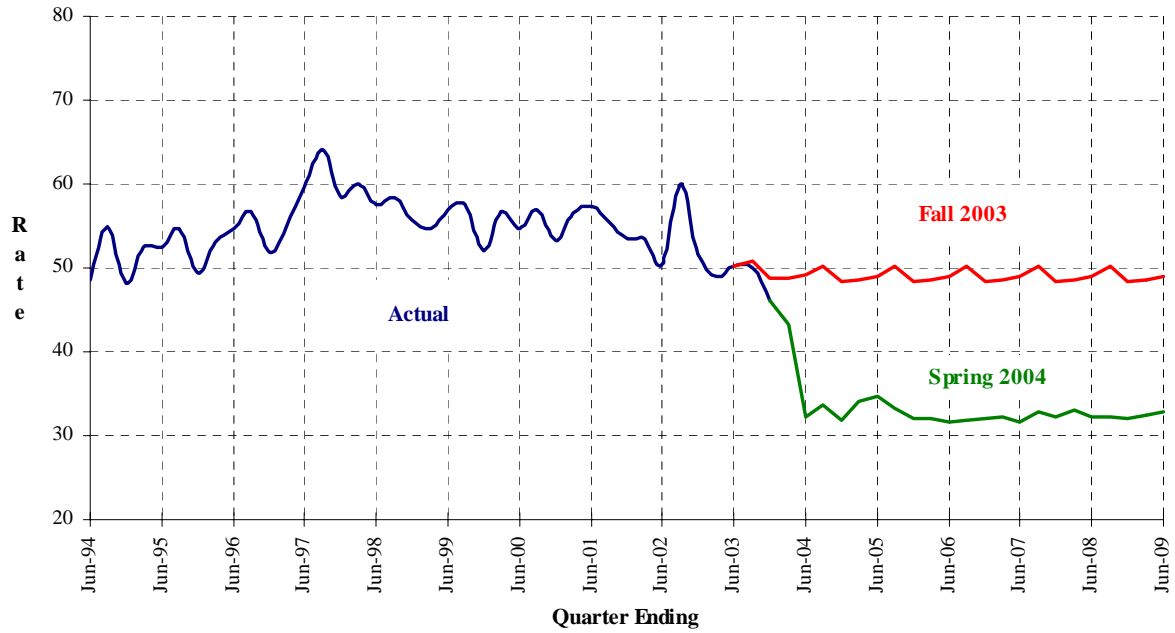
For the six-month period of July to December 2003 there were 17,420 male felon parolees suspended to parolee at large (PAL) status, 1,204 more than projected in Fall 2003. The PAL rate was 35.2, or 2.6 higher than projected. The Spring 2004 Projections assume that the male felon PAL rate will be approximately 2.0 points higher than projected in the Fall 2003 Projections.

**Figure 5**  
**Male Felon Parole Violator Returns**  
**June 1994 through December 2003**



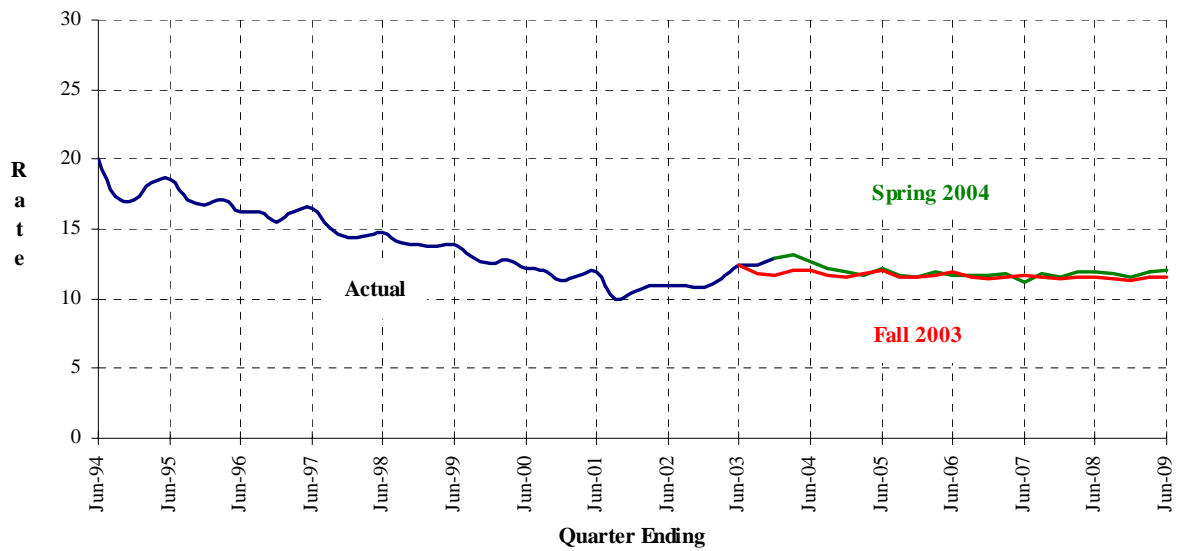
Note: PV-RTC/PendRevs are parole violators returned to custody or pending revocation  
 PV-WNTs are parole violators returned with a new term

**Figure 6**  
**Male Felon PV-RTC/PendRev Rates**  
**June 1994 through June 2009**



Note: PV-RTC/PendRevs are parole violators returned to custody or pending revocation.

**Figure 7**  
**Male Felon PV-WNT Rates**  
**June 1994 through June 2009**



Note: PV-WNTs are parole violators returned with a new term.

## **III. SPRING 2004 POPULATION PROJECTIONS**

---

The Spring 2004 Projections are summarized in Tables 1 and 2 and are presented in greater detail in Tables 3 through 16. Tables 3 and 4 present the quarterly institution populations, while Tables 5 and 6 present detailed projections by inmate placement needs. Tables 7 through 10 project the movement of institution populations (including civil narcotic addicts), and Tables 11 through 16 present detailed projections of the parole and outpatient population.

**J. Six Year Population Projections**

**Tables 1-2**

**Fiscal Years 2003-04 through 2008-09**

Spring 2004 Projections

Table 1  
 Institution Population  
 June 30, 1994 through June 30, 2009

<u>As of June 30</u>	<u>Total</u>	<u>Total Males</u>	<u>Male Felons</u>	<u>Male Addicts</u>	<u>Male Others</u>	<u>Total Females</u>	<u>Female Felons</u>	<u>Female Addicts</u>	<u>Female Others</u>
Actual									
1994	124,813	116,879	113,238	3,189	452	7,934	7,144	750	40
1995	131,342	122,514	119,063	3,114	337	8,828	8,026	766	36
1996	141,017	131,273	128,497	2,465	311	9,744	8,975	736	33
1997	152,506	141,669	139,239	2,163	267	10,837	10,188	583	66
1998	158,207	147,001	144,805	1,924	272	11,206	10,594	562	50
1999	162,064	150,581	148,621	1,703	257	11,483	10,949	495	39
2000	162,000	150,793	148,754	1,776	263	11,207	10,620	535	52
2001	161,497	150,785	148,853	1,668	264	10,712	10,261	403	48
2002	157,979	148,153	146,455	1,351	347	9,826	9,453	311	62
2003	160,931	150,851	149,449	1,104	298	10,080	9,752	270	58
Projected									
2004	160,122	149,907	148,617	990	300	10,215	9,881	279	55
2005	157,218	147,333	146,263	769	301	9,885	9,598	231	56
2006	156,952	146,943	145,872	769	302	10,009	9,756	196	57
2007	156,889	146,767	145,696	769	302	10,122	9,867	196	59
2008	156,884	146,821	145,749	769	303	10,063	9,807	196	60
2009	157,623	147,481	146,409	769	303	10,142	9,885	196	61

Note: Others include county diagnostic cases, persons from other states, federal prisoners, county safekeepers, and California Youth Authority (CYA) wards.

Spring 2004 Projections

Table 2  
 Parole and Outpatient Population  
 Supervised in California  
 June 30, 1994 through June 30, 2009

<u>As of June 30</u>	<u>Total</u>	<u>Total Males</u>	<u>Male Felons</u>	<u>Male Addicts</u>	<u>Male Others</u>	<u>Total Females</u>	<u>Female Felons</u>	<u>Female Addicts</u>	<u>Female Others</u>
Actual									
1994	85,197	77,014	72,057	3,093	1,864	8,183	7,037	980	166
1995	91,456	83,048	78,450	3,346	1,252	8,408	7,325	960	123
1996	98,013	88,710	84,227	3,172	1,311	9,303	8,311	870	122
1997	100,828	91,002	87,202	2,684	1,116	9,826	8,817	880	129
1998	108,750	97,587	94,158	2,313	1,116	11,163	10,256	751	156
1999	112,494	100,716	97,593	1,954	1,169	11,778	10,944	678	156
2000	119,298	106,505	103,453	1,899	1,153	12,793	12,033	603	157
2001	119,636	106,396	103,232	2,011	1,153	13,240	12,396	674	170
2002	120,336	107,136	103,794	2,027	1,315	13,200	12,366	646	188
2003	116,173	103,371	99,937	2,034	1,400	12,802	11,976	636	190
Projected									
2004	115,475	102,829	99,828	1,551	1,450	12,646	11,961	488	197
2005	117,069	104,152	101,503	1,198	1,451	12,917	12,320	400	197
2006	113,111	100,307	97,658	1,198	1,451	12,804	12,271	336	197
2007	109,854	97,086	94,437	1,198	1,451	12,768	12,235	336	197
2008	109,070	96,131	93,482	1,198	1,451	12,939	12,406	336	197
2009	107,087	94,113	91,464	1,198	1,451	12,974	12,441	336	197

Note: Others include co-ops and other state/federal parolees.

**K. Two Year Institution Population and Placement Needs Projections**

**Tables 3-10**

**Detail Fiscal Years 2003-04 and 2007-08**

**Fiscal Years 2003-04 through 2008-09 (Tables 5 & 6)**



Spring 2004 Projections

Table 3  
 Institution Population  
 Fiscal Years 2003/04 through 2004/05

	Actual June 30 2003	Sep 30 2003	Dec 31 2003	Mar 31 2004	Jun 30 2004	Sep 30 2004	Dec 31 2004	Mar 31 2005	Jun 30 2005
Total Population	160,931	161,714	161,785	162,686	160,122	157,809	156,316	156,663	157,218
Men (Inc. CCC)	150,851	151,324	151,331	152,195	149,907	147,713	146,359	146,768	147,333
Women (Inc. CCC)	10,080	10,390	10,454	10,491	10,215	10,096	9,957	9,895	9,885
Total (Exc. CCC)	153,311	154,694	154,753	156,626	154,062	151,734	149,968	150,315	150,870
Men	143,699	144,760	144,755	146,591	144,303	142,094	140,486	140,895	141,460
Felons	142,297	143,338	143,338	145,241	143,013	140,876	139,330	139,811	140,390
Civil Narcotic Addicts	1,104	1,118	1,119	1,056	990	923	857	790	769
Others 1	298	304	298	294	300	295	299	294	301
Women	9,612	9,934	9,998	10,035	9,759	9,640	9,482	9,420	9,410
Felons	9,284	9,582	9,641	9,699	9,425	9,324	9,173	9,126	9,123
Civil Narcotic Addicts	270	297	304	286	279	267	255	243	231
Others 1	58	55	53	50	55	49	54	51	56
Community Correctional Centers 2	7,620	7,020	7,032	6,060	6,060	6,075	6,348	6,348	6,348
Total Males	7,152	6,564	6,576	5,604	5,604	5,619	5,873	5,873	5,873
Male Felons	7,152	6,564	6,576	5,604	5,604	5,619	5,873	5,873	5,873
Male Civil Narcotic Addicts	0	0	0	0	0	0	0	0	0
Female Felons	468	456	456	456	456	456	475	475	475

1 Others include county diagnostic cases, other state/federal prisoners, safekeepers, and CYA wards.

2 Community Correctional Center (CCC) data are based on the bed activation schedules provided by the Parole and Institutions Divisions.

Note: Data through December 2003 are actual.

Spring 2004 Projections

Table 4  
 Average Daily Institution Population  
 Fiscal Years 2003/04 through 2004/05

	FY 2003/04 Avg	Sep 30 2003	Dec 31 2003	Mar 31 2004	Jun 30 2004	FY 2004/05 Avg	Sep 30 2004	Dec 31 2004	Mar 31 2005	Jun 30 2005
Total Population	161,876	161,384	162,063	162,653	161,403	157,259	158,845	156,987	156,237	156,965
Men (Inc. CCC)	151,505	151,140	151,654	152,184	151,041	147,278	148,702	146,987	146,351	147,071
Women (Inc. CCC)	10,371	10,244	10,409	10,469	10,362	9,981	10,143	10,000	9,886	9,894
Total (Exc. CCC)	155,267	154,263	155,033	156,427	155,343	150,992	152,778	150,685	149,889	150,617
Men	145,352	144,477	145,080	146,414	145,437	141,481	143,091	141,156	140,478	141,198
Felons	143,961	143,061	143,643	145,025	144,114	140,320	141,837	139,967	139,353	140,125
Civil Narcotic Addicts	1,092	1,119	1,137	1,089	1,023	862	958	891	825	773
Others 1	299	298	299	300	300	299	296	298	300	300
Women	9,915	9,786	9,953	10,013	9,906	9,511	9,687	9,528	9,411	9,419
Felons	9,569	9,445	9,604	9,661	9,567	9,204	9,362	9,216	9,108	9,128
Civil Narcotic Addicts	293	284	300	300	287	256	274	262	250	238
Others 1	52	57	49	52	52	52	51	50	53	53
Community Correctional Centers 2	6,609	7,121	7,030	6,226	6,060	6,266	6,067	6,302	6,348	6,348
Total Males	6,153	6,663	6,574	5,770	5,604	5,797	5,611	5,830	5,873	5,873
Male Felons	6,153	6,663	6,574	5,770	5,604	5,797	5,611	5,830	5,873	5,873
Male Civil Narcotic Addicts	0	0	0	0	0	0	0	0	0	0
Female Felons	457	458	456	456	456	469	456	472	475	475

1 Others include county diagnostic cases, other state/federal prisoners, safekeepers, and CYA wards.

2 Community Correctional Center (CCC) data are based on the bed activation schedules provided by the Parole and Institutions Divisions.

Note: Data through December 2003 are actual.

Spring 2004 Projections

Table 5  
 Projected Placement Needs for Male Felon Institution Population  
 Fiscal Years 2003/04 through 2008/09

Fiscal Year	Fiscal Quarter	Reception Center	Level I	Level II	Level III	Level IV	Special PHU	Housing SHU	Total Housing	Grand Total
2003/04	September 30	21,951	32,064	32,110	35,470	25,365	22	2,920	2,942	149,902
	December 31	21,404	32,125	32,155	35,705	25,625	22	2,878	2,900	149,914
	March 31	20,770	32,425	32,705	36,165	25,850	20	2,910	2,930	150,845
	June 30	18,580	32,057	32,625	36,405	26,000	20	2,930	2,950	148,617
2004/05	September 30	18,620	31,030	31,755	36,145	25,995	20	2,930	2,950	146,495
	December 31	18,225	30,468	31,330	36,140	26,070	20	2,950	2,970	145,203
	March 31	18,785	30,284	31,225	36,245	26,170	20	2,955	2,975	145,684
	June 30	19,245	30,128	31,185	36,420	26,300	20	2,965	2,985	146,263
2005/06	June 30	17,975	29,797	31,105	37,125	26,820	20	3,030	3,050	145,872
2006/07	June 30	17,415	29,441	30,865	37,595	27,270	20	3,090	3,110	145,696
2007/08	June 30	17,450	29,054	30,550	37,895	27,655	20	3,125	3,145	145,749
2008/09	June 30	17,325	29,054	30,565	38,245	28,030	25	3,165	3,190	146,409

Note: These estimates assume that the male reception center population will increase proportionately with the increase in male felon intake.  
 PHU is Protective Housing Unit.

Spring 2004 Projections

Table 6  
 Projected Placement Needs for Total Male Institution Population  
 Fiscal Years 2003/04 through 2008/09

Fiscal Year	Fiscal Quarter	Reception Center	Level I	Level II	Level III	Level IV	Special PHU	Housing SHU	Total Housing	Grand Total
2003/04	September 30	22,255	32,064	33,228	35,470	25,365	22	2,920	2,942	151,324
	December 31	21,702	32,125	33,274	35,705	25,625	22	2,878	2,900	151,331
	March 31	21,064	32,425	33,761	36,165	25,850	20	2,910	2,930	152,195
	June 30	18,880	32,057	33,615	36,405	26,000	20	2,930	2,950	149,907
2004/05	September 30	18,915	31,030	32,678	36,145	25,995	20	2,930	2,950	147,713
	December 31	18,524	30,468	32,187	36,140	26,070	20	2,950	2,970	146,359
	March 31	19,079	30,284	32,015	36,245	26,170	20	2,955	2,975	146,768
	June 30	19,546	30,128	31,954	36,420	26,300	20	2,965	2,985	147,333
2005/06	June 30	18,277	29,797	31,874	37,125	26,820	20	3,030	3,050	146,943
2006/07	June 30	17,717	29,441	31,634	37,595	27,270	20	3,090	3,110	146,767
2007/08	June 30	17,753	29,054	31,319	37,895	27,655	20	3,125	3,145	146,821
2008/09	June 30	17,628	29,054	31,334	38,245	28,030	25	3,165	3,190	147,481

Note: These estimates assume that the male reception center population will increase proportionately with the increase in male felon intake. Reception Center includes others as defined on Table 1. Level II includes civil narcotic addicts. PHU is Protective Housing Unit.

**Population Projections Unit  
Estimates and Statistical Analysis Section  
Offender Information Services Branch**

**Department of Corrections  
State of California  
02/17/2004**

**Spring 2004 Projections**

Table 7  
Movement of Male Felon Institution Population  
Fiscal Years 2002/03 through 2004/05

<u>Fiscal Year</u>	<u>Fiscal Quarter</u>	<u>Total Intake</u>	<u>From Court</u>	<u>PV-WNT</u>	<u>PV-RTC</u>	<u>Other Intake</u>	<u>Total Outgo</u>	<u>First Parole</u>	<u>PV-RTC Parole</u>	<u>Other Outgo</u>	<u>Gain/Loss</u>	<u>Population End of Qtr</u>
2002/03	Jul-Sep	30,039	8,612	3,324	18,077	26	27,163	11,262	14,925	976	2,799	149,254
	Oct-Dec	27,125	8,542	3,196	15,365	22	28,128	11,566	15,599	963	-926	148,328
	Jan-Mar	26,995	9,012	3,381	14,575	27	27,074	11,525	14,679	870	-258	148,070
	Apr-Jun	28,502	9,943	3,661	14,872	26	27,134	11,961	14,331	842	1,379	149,449
Total		112,661	36,109	13,562	62,889	101	109,499	46,314	59,534	3,651	2,994	
2003/04	Jul-Sep	27,894	9,596	3,635	14,637	26	27,197	11,982	14,346	869	453	149,902
	Oct-Dec	27,046	9,898	3,722	13,398	28	27,170	12,618	13,728	824	12	149,914
	Jan-Mar	26,250	9,965	3,784	12,477	24	25,319	12,058	12,690	571	931	150,845
	Apr-Jun	23,483	10,383	3,668	9,405	27	25,711	12,435	12,711	565	-2,228	148,617
Total		104,673	39,842	14,809	49,917	105	105,397	49,093	53,475	2,829	-832	
2004/05	Jul-Sep	23,536	9,867	3,625	10,018	26	25,658	13,445	11,712	501	-2,122	146,495
	Oct-Dec	23,036	9,815	3,600	9,595	26	24,328	13,992	9,860	476	-1,292	145,203
	Jan-Mar	23,745	9,954	3,520	10,247	24	23,264	13,310	9,502	452	481	145,684
	Apr-Jun	24,326	10,349	3,617	10,333	27	23,747	13,717	9,597	433	579	146,263
Total		94,643	39,985	14,362	40,193	103	96,997	54,464	40,671	1,862	-2,354	

\* Projected

Note: Other intake includes CYA  
Other outgo includes discharges and deaths.

Spring 2004 Projections

Table 8  
 Movement of Female Felon Institution Population  
 Fiscal Years 2002/03 through 2004/05

<u>Fiscal Year</u>	<u>Fiscal Quarter</u>	<u>Total Intake</u>	<u>From Court</u>	<u>PV-WNT</u>	<u>PV-RTC</u>	<u>Total Outgo</u>	<u>First Parole</u>	<u>PV-RTC Parole</u>	<u>Other Outgo</u>	<u>Gain/Loss</u>	<u>Population End of Qtr</u>
2002/03	Jul-Sep	2,899	1,064	303	1,532	2,682	1,221	1,388	73	235	9,688
	Oct-Dec	2,537	1,022	268	1,247	2,795	1,316	1,422	57	-262	9,426
	Jan-Mar	2,707	1,137	305	1,265	2,665	1,375	1,236	54	41	9,467
	Apr-Jun	2,947	1,296	319	1,332	2,664	1,361	1,252	51	285	9,752
Total		11,090	4,519	1,195	5,376	10,806	5,273	5,298	235	299	
2003/04	Jul-Sep	2,920	1,289	370	1,261	2,608	1,323	1,217	68	286	10,038
	Oct-Dec	2,695	1,257	301	1,137	2,695	1,419	1,206	70	59	10,097
	Jan-Mar	2,655	1,309	303	1,043	2,597	1,434	1,121	42	58	10,155
	Apr-Jun	2,338	1,354	279	705	2,612	1,445	1,125	42	-274	9,881
Total		10,608	5,209	1,253	4,146	10,512	5,621	4,669	222	129	
2004/05	Jul-Sep	* 2,462	1,330	317	815	2,563	1,601	938	24	-101	9,780
	Oct-Dec	* 2,416	1,279	325	812	2,548	1,715	806	27	-132	9,648
	Jan-Mar	* 2,512	1,330	298	884	2,559	1,732	800	27	-47	9,601
	Apr-Jun	* 2,589	1,372	314	903	2,592	1,689	882	21	-3	9,598
Total		9,979	5,311	1,254	3,414	10,262	6,737	3,426	99	-283	

\* Projected

Note: Other outgo includes discharges and deaths.

Spring 2004 Projections

Table 9  
 Movement of Male Civil Narcotic Addict Institution Population  
 Fiscal Years 2002/03 through 2004/05

Fiscal Year	Fiscal Quarter	Total Intake	From Court	Outpatients Returned	Total Outgo	Outpatient Status	Other Outgo	Gain/Loss	Population End of Qtr
2002/03	Jul-Sep	457	214	243	512	455	57	-61	1,290
	Oct-Dec	438	202	236	444	384	60	-1	1,289
	Jan-Mar	427	206	221	530	475	55	-105	1,184
	Apr-Jun	423	166	257	503	439	64	-80	1,104
Total		1,745	788	957	1,989	1,753	236	-247	
2003/04	Jul-Sep	413	187	226	402	325	77	14	1,118
	Oct-Dec	492	234	258	497	435	62	1	1,119
	Jan-Mar *	394	195	199	457	264	193	-63	1,056
	Apr-Jun *	364	181	183	430	270	160	-66	990
Total		1,663	797	866	1,786	1,294	492	-114	
2004/05	Jul-Sep *	335	167	168	402	246	156	-67	923
	Oct-Dec *	308	152	156	374	220	154	-66	857
	Jan-Mar *	279	138	141	346	196	150	-67	790
	Apr-Jun *	304	153	151	325	249	76	-21	769
Total		1,226	610	616	1,447	911	536	-221	

\* Projected

Note: Other outgo includes discharges and deaths.

Spring 2004 Projections

Table 10  
 Movement of Female Civil Narcotic Addict Institution Population  
 Fiscal Years 2002/03 through 2004/05

Fiscal Year	Fiscal Quarter	Total Intake	From Court	Outpatients Returned	Total Outgo	Outpatient Status	Other Outgo	Gain/Loss	Population End of Qtr	
2002/03	Jul-Sep	88	46	42	98	91	7	4	315	
	Oct-Dec	77	44	33	85	81	4	-8	307	
	Jan-Mar	80	49	31	103	94	9	-24	283	
	Apr-Jun	113	76	37	128	119	9	-13	270	
Total		358	215	143	414	385	29	-41		
2003/04	Jul-Sep	111	72	39	83	68	15	27	297	
	Oct-Dec	91	54	37	84	77	7	7	304	
	Jan-Mar	135	101	34	153	89	64	-18	286	
	Apr-Jun	140	106	34	147	104	43	-7	279	
Total		477	333	144	467	338	129	9		
2004/05	Jul-Sep	*	127	97	30	139	87	52	-12	267
	Oct-Dec	*	121	91	30	133	83	50	-12	255
	Jan-Mar	*	113	86	27	125	79	46	-12	243
	Apr-Jun	*	109	82	27	121	73	48	-12	231
Total			470	356	114	518	322	196	-48	

\* Projected

Note: Other outgo includes discharges and deaths.



**L. Two Year Parole and Outpatient Population Projections**

**Tables 11-16**

**Detail Fiscal Years 2003-04 and 2004-05**

Spring 2004 Projections

Table 11  
 California Supervised Parole and Outpatient Population  
 Fiscal Years 2003/04 through 2004/05

	Actual June 30 2003	Sep 30 2003	Dec 31 2003	Mar 31 2004	Jun 30 2004	Sep 30 2004	Dec 31 2004	Mar 31 2005	Jun 30 2005
Total Men and Women	116,173	114,238	114,136	113,068	115,475	117,652	118,932	117,937	117,069
Felons	111,913	110,232	110,173	109,266	111,789	114,093	115,502	114,635	113,823
Outpatients	2,670	2,381	2,327	2,157	2,039	1,911	1,782	1,654	1,598
Others 1	1,590	1,625	1,636	1,645	1,647	1,648	1,648	1,648	1,648
Total Men	103,371	101,794	101,846	100,749	102,829	104,919	106,141	105,084	104,152
Felons	99,937	98,541	98,611	97,643	99,828	102,023	103,352	102,401	101,503
Outpatients	2,034	1,822	1,796	1,658	1,551	1,445	1,338	1,232	1,198
Others 1	1,400	1,431	1,439	1,448	1,450	1,451	1,451	1,451	1,451
Total Women	12,802	12,444	12,290	12,319	12,646	12,733	12,791	12,853	12,917
Felons	11,976	11,691	11,562	11,623	11,961	12,070	12,150	12,234	12,320
Outpatients	636	559	531	499	488	466	444	422	400
Others 1	190	194	197	197	197	197	197	197	197

1 Others include co-ops and other state/federal parolees.

Note: Data through December 2003 are actual.

Spring 2004 Projections

Table 12  
 Average Daily Parole and Outpatient Population  
 Fiscal Years 2003/04 through 2004/05

	FY 2003/04 Avg	Sep 30 2003	Dec 31 2003	Mar 31 2004	Jun 30 2004	FY 2004/05 Avg	Sep 30 2004	Dec 31 2004	Mar 31 2005	Jun 30 2005
Total Men and Women	114,227	115,303	114,118	113,229	114,256	117,813	116,777	118,497	118,509	117,467
Felons	110,288	111,162	110,135	109,349	110,504	114,375	113,152	115,002	115,141	114,205
Outpatients	2,304	2,521	2,349	2,239	2,105	1,790	1,977	1,848	1,720	1,615
Others 1	1,636	1,620	1,634	1,642	1,647	1,648	1,648	1,648	1,648	1,648
Total Men	101,770	102,673	101,715	100,916	101,776	105,011	104,056	105,716	105,669	104,603
Felons	98,567	99,318	98,475	97,754	98,722	102,215	101,106	102,872	102,931	101,949
Outpatients	1,763	1,927	1,804	1,716	1,605	1,346	1,500	1,393	1,286	1,204
Others 1	1,440	1,428	1,437	1,445	1,450	1,451	1,451	1,451	1,451	1,451
Total Women	12,457	12,630	12,402	12,314	12,480	12,802	12,721	12,781	12,840	12,864
Felons	11,720	11,844	11,660	11,594	11,783	12,161	12,047	12,129	12,210	12,256
Outpatients	540	593	545	522	500	444	477	455	433	411
Others 1	196	193	197	197	197	197	197	197	197	197

1 Others include co-ops and other state/federal parolees.

Note: Data through December 2003 are actual.

Spring 2004 Projections

Table 13  
 Movement of Male Felon Parole Population  
 Fiscal Years 2002/03 through 2004/05

Fiscal Year	Fiscal Quarter	Total Intake	Paroled	Reinstated	Other Intake	Total Outgo	PV-WNT	PV-RTC	PALS	Other Outgo	Gain/Loss	Population End of Qtr
2002/03	Jul-Sep	32,996	26,146	6,496	354	36,634	3,191	15,995	9,166	8,282	-3,633	100,161
	Oct-Dec	33,459	27,128	6,009	322	32,572	3,091	13,430	7,676	8,375	770	100,931
	Jan-Mar	32,520	26,173	5,990	357	32,834	3,238	12,779	7,588	9,229	-237	100,694
	Apr-Jun	33,285	26,254	6,693	338	34,091	3,500	13,080	8,545	8,966	-757	99,937
	Total	132,260	105,701	25,188	1,371	136,131	13,020	55,284	32,975	34,852	-3,857	
2003/04	Jul-Sep	33,336	26,288	6,773	275	34,846	3,500	12,684	9,309	9,353	-1,396	98,541
	Oct-Dec	32,847	26,305	6,392	150	32,929	3,587	11,564	8,114	9,664	70	98,611
	Jan-Mar	31,034	24,748	5,962	324	32,002	3,628	10,559	7,974	9,841	-968	97,643
	Apr-Jun	31,624	25,146	6,140	338	29,439	3,512	7,463	8,487	9,977	2,185	99,828
	Total	128,841	102,487	25,267	1,087	129,216	14,227	42,270	33,884	38,835	-109	
2004/05	Jul-Sep	31,873	25,157	6,383	333	29,678	3,466	8,017	8,618	9,577	2,195	102,023
	Oct-Dec	30,114	23,852	5,930	332	28,785	3,468	7,643	7,664	10,010	1,329	103,352
	Jan-Mar	28,974	22,812	5,828	334	29,925	3,390	8,482	7,501	10,552	-951	102,401
	Apr-Jun	29,436	23,314	5,774	348	30,334	3,489	8,553	7,784	10,508	-898	101,503
	Total	120,397	95,135	23,915	1,347	118,722	13,813	32,695	31,567	40,647	1,675	

\* Projected

Note: Other intake includes transfers direct from court, interstate parole unit (ISPU), and co-ops.  
 PALS are parolees-at-large with warrant issued (absconded from parole supervision).  
 Other outgo includes transfers to ISPU, discharges and deaths.

Spring 2004 Projections

Table 14  
 Movement of Female Felon Parole Population  
 Fiscal Years 2002/03 through 2004/05

Fiscal Year	Fiscal Quarter	Total Intake	Paroled	Reinstated	Other Intake	Total Outgo	PV-WNT	PV-RTC	PALS	Other Outgo	Gain/Loss	Population End of Qtr
2002/03	Jul-Sep	3,574	2,602	926	46	4,010	290	1,327	1,232	1,161	-449	11,917
	Oct-Dec	3,619	2,734	838	47	3,473	258	1,055	1,016	1,144	144	12,061
	Jan-Mar	3,508	2,608	847	53	3,517	285	1,116	890	1,226	6	12,067
	Apr-Jun	3,628	2,608	981	39	3,735	302	1,165	1,099	1,169	-91	11,976
Total		14,329	10,552	3,592	185	14,735	1,135	4,663	4,237	4,700	-390	
2003/04	Jul-Sep	3,523	2,532	963	28	3,802	355	1,088	1,179	1,180	-285	11,691
	Oct-Dec	3,540	2,621	894	25	3,680	294	973	1,077	1,336	-129	11,562
	Jan-Mar *	3,454	2,555	856	43	3,393	286	868	998	1,241	61	11,623
	Apr-Jun *	3,477	2,570	859	48	3,139	261	536	1,116	1,226	338	11,961
Total		13,994	10,278	3,572	144	14,014	1,196	3,465	4,370	4,983	-15	
2004/05	Jul-Sep *	3,463	2,539	874	50	3,354	299	653	1,137	1,265	109	12,070
	Oct-Dec *	3,419	2,521	857	41	3,339	312	642	1,068	1,317	80	12,150
	Jan-Mar *	3,406	2,532	829	45	3,322	280	697	1,070	1,275	84	12,234
	Apr-Jun *	3,492	2,571	872	49	3,406	302	738	1,109	1,257	86	12,320
Total		13,780	10,163	3,432	185	13,421	1,193	2,730	4,384	5,114	359	

\* Projected

Note: Other intake includes transfers direct from court, interstate parole unit (ISPU), and co-ops.  
 PALS are parolees-at-large with warrant issued (absconded from parole supervision).  
 Other outgo includes transfers to ISPU, discharges and deaths.

Spring 2004 Projections

Table 15  
 Movement of Male Civil Narcotic Addict Outpatient Population  
 Fiscal Years 2002/03 through 2004/05

Fiscal Year	Fiscal Quarter	Total Intake	Released from Institution	Reinstated	Total Outgo	PV-WNT	PV-RTC	RALS	Other Outgo	Gain/Loss	Population End of Qtr
2002/03	Jul-Sep	503	455	48	549	4	225	106	214	-47	1,980
	Oct-Dec	441	384	57	453	6	215	59	173	-11	1,969
	Jan-Mar	512	475	37	459	8	201	63	187	52	2,021
	Apr-Jun	478	439	39	468	8	234	76	150	13	2,034
Total		1,934	1,753	181	1,929	26	875	304	724	7	
2003/04	Jul-Sep	392	325	67	600	8	200	140	252	-212	1,822
	Oct-Dec	506	435	71	533	5	234	81	213	-26	1,796
	Jan-Mar *	330	264	66	468	9	187	46	226	-138	1,658
	Apr-Jun *	331	270	61	438	9	171	47	211	-107	1,551
Total		1,559	1,294	265	2,039	31	792	314	902	-483	
2004/05	Jul-Sep *	303	246	57	409	9	156	44	200	-106	1,445
	Oct-Dec *	273	220	53	380	9	144	39	188	-107	1,338
	Jan-Mar *	245	196	49	351	9	129	36	177	-106	1,232
	Apr-Jun *	294	249	45	328	9	139	43	137	-34	1,198
Total		1,115	911	204	1,468	36	568	162	702	-353	

\* Projected

Note: RALS are releasees-at-large with warrant issued (absconded from outpatient supervision).  
 Other outgo includes discharges and deaths.

Spring 2004 Projections

Table 16  
 Movement of Female Civil Narcotic Addict Outpatient Population  
 Fiscal Years 2002/03 through 2004/05

<u>Fiscal Year</u>	<u>Fiscal Quarter</u>	<u>Total Intake</u>	<u>Released from Institution</u>	<u>Reinstated</u>	<u>Total Outgo</u>	<u>PV-WNT</u>	<u>PV-RTC</u>	<u>RALS</u>	<u>Other Outgo</u>	<u>Gain/Loss</u>	<u>Population End of Qtr</u>
2002/03	Jul-Sep	100	91	9	106	0	38	17	51	-5	641
	Oct-Dec	88	81	7	137	1	27	11	98	-52	589
	Jan-Mar	104	94	10	101	0	29	11	61	5	594
	Apr-Jun	132	119	13	90	0	35	13	42	42	636
	Total		424	385	39	434	1	129	52	252	-10
2003/04	Jul-Sep	82	68	14	157	1	35	25	96	-77	559
	Oct-Dec	87	77	10	114	1	34	14	65	-28	531
	Jan-Mar	104	89	15	136	0	34	12	90	-32	499
	Apr-Jun	119	104	15	130	0	34	14	82	-11	488
	Total		392	338	54	537	2	137	65	333	-148
2004/05	Jul-Sep	102	87	15	124	0	30	13	81	-22	466
	Oct-Dec	96	83	13	118	0	30	10	78	-22	444
	Jan-Mar	91	79	12	113	0	27	10	76	-22	422
	Apr-Jun	85	73	12	107	0	27	10	70	-22	400
	Total		374	322	52	462	0	114	43	305	-88

\* Projected

Note: RALS are releasees-at-large with warrant issued (absconded from outpatient supervision).  
 Other outgo includes discharges and deaths.