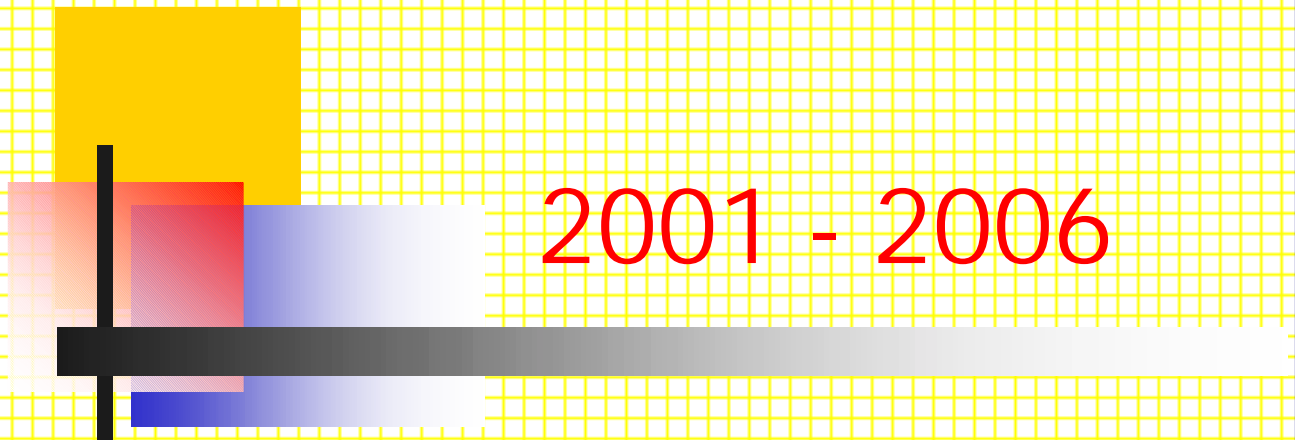


Spring 2001 Population Projections



California
Department of Corrections

CALIFORNIA DEPARTMENT OF CORRECTIONS

STEVEN CAMBRA, JR.

Director (A)

TERESA ROCHA

Chief Deputy Director

Support Services

E.A. MITCHELL

Interim Assistant Director

Office of Correctional Planning

GERALD E. BECKETT

Chief (A)

Offender Information Services Branch

ARTHUR CHUNG

Chief (A)

Estimates and Statistical Analyst Section

JACK LEONARD

Operations Research Specialist III

Population Projections Unit

Regina Chung
Research Analyst II

Jacqui Coder
Research Analyst II

Nancy A. Peters
Secretary

ACKNOWLEDGMENTS

Although the Estimates and Statistical Analysis Section is responsible for the semiannual publication of the Population Projections, others in the Department of Corrections made significant contributions that are greatly appreciated. Among those involved in the projections were (in alphabetical order) the:

- Board of Prison Terms
- Information Systems Division
- Institutions Division
- Office of Budget Management
- Parole and Community Services Division

	PAGE
I. INTRODUCTION -----	1
A. Factors Affecting Population -----	3
B. Comparison of Spring 2001 with Fall 2000 Projections -----	4
Institution Population,	
June 30, 2000 through June 30, 2006 (Table A) -----	4
Parole and Outpatient Population,	
June 30, 2000 through June 30, 2006 (Table B)-----	5
Total Institution Population, Actual and Projected,	
Fiscal Years 1990-91 through 2005-06 (Figure 1) -----	6
Total Parole and Outpatient Population, California Supervised, Actual and Projected,	
Fiscal Years 1990-91 through 2005-06 (Figure 2) -----	6
II. PREMISES -----	7
Total Felon Admissions, Actual and Projected,	
Fiscal Years 1990-91 through 2005-06 (Figure 3) -----	8
Total Felon Admission Rates, Actual and Projected,	
Fiscal Years 1990-91 through 2005-06 (Figure 4) -----	8
C. Felon Admissions -----	9
Actual Total Felon Admissions To Prison,	
Fiscal Years 1990-91 through 1999-00 (Table C) -----	9
Projected Total Felon Admissions,	
Fiscal Years 2000-01 through 2005-06 (Table D) -----	10
D. Significant Chaptered Legislation and Initiatives -----	10
E. The Work Incentive Program (WIP) -----	14
F. Court Sentences -----	14
Average Sentence and Credits, Felon New Admissions and PV-WNTs,	
Fiscal Years 1992-93 through 1999-00 (Table E)-----	15
G. Placement Need Projections -----	15
H. Parole Violators -----	15
(Continued)	

TABLE OF CONTENTS

II. PREMISES (Continued)	PAGE
I. Felon Parole Population -----	16
Male Felon Parole Violator Returns,	
June 1990 through December 2000 (Figure 5) -----	17
Male Felon PV-RTC/PendRev Rates,	
June 1990 through June 2006 (Figure 6) -----	18
Male Felon PV-WNT Rates,	
June 1990 through June 2006 (Figure 7) -----	18
 III. SPRING 2001 POPULATION PROJECTIONS -----	 19
J. Six-Year Population Projections -----	21
Institution Population,	
June 30, 1991 through June 30, 2006 (Table 1) -----	22
Parole and Outpatient Population, Supervised in California,	
June 30, 1991 through June 30, 2006 (Table 2) -----	23
 K. Two-Year Institution Population and Placement Needs Projections -----	 25
Institution Population,	
Fiscal Years 2000-01 and 2001-02 (Table 3) -----	26
Average Daily Institution Population,	
Fiscal Years 2000-01 and 2001-02 (Table 4) -----	27
Projected Placement Needs for Male Felon Institution Population,	
Fiscal Years 2000-01 through 2005-06 (Table 5) -----	28
Projected Placement Needs for Total Male Institution Population,	
Fiscal Years 2000-01 through 2005-06 (Table 6) -----	29
Movement of Male Felon Institution Population,	
Fiscal Years 1999-00 through 2001-02 (Table 7) -----	30
Movement of Female Felon Institution Population,	
Fiscal Years 1999-00 through 2001-02 (Table 8) -----	31
Movement of Male Civil Narcotic Addict Institution Population,	
Fiscal Years 1999-00 through 2001-02 (Table 9) -----	32
Movement of Female Civil Narcotic Addict Institution Population,	
Fiscal Years 1999-00 through 2001-02 (Table 10) -----	33

(Continued)

III. SPRING 2001 POPULATION PROJECTIONS (Continued)	PAGE
L. Two-Year Parole and Outpatient Population Projections-----	35
California Supervised Parole and Outpatient Population, Fiscal Years 2000-01 and 2001-02 (Table 11)-----	36
Average Daily Parole and Outpatient Population, Fiscal Years 2000-01 and 2001-02 (Table 12)-----	37
Movement of Male Felon Parole Population, Fiscal Years 1999-00 through 2001-02 (Table 13) -----	38
Movement of Female Felon Parole Population, Fiscal Years 1999-00 through 2001-02 (Table 14)-----	39
Movement of Male Civil Narcotic Addict Outpatient Population, Fiscal Years 1999-00 through 2001-02 (Table 15) -----	40
Movement of Female Civil Narcotic Addict Outpatient Population, Fiscal Years 1999-00 through 2001-02 (Table 16) -----	41

I. INTRODUCTION

INTRODUCTION

This document contains the California Department of Corrections' (CDC) projections of institution, parole, and outpatient populations for Fiscal Years (FY) 2000-01 through 2005-06. The projections are based upon the most current available data and existing law.

The projections incorporate the expected impact of Proposition 36, the Substance Abuse and Crime Act of 2000, which was passed on November 7, 2000 and will be effective July 1, 2001 (See Section II.D.1).

A. Factors Affecting Population

- The CDC institution population on December 31, 2000, was 160,655, which was 1,498 less than expected. The population decreased by 32 over the Calendar Year (CY) compared to previous increases of 1,124 (CY 1999) and 4,287 (CY 1998). Since June 30, 2000, the institution population has declined by 1,345. The major reason for this decline is a decrease in new admissions from court, parole violators returned with new terms (PV-WNT), and a continuing decline in the rate of parole violators returned to custody (PV-RTC/PendRev).
- During the years 1980-1989 the institution population experienced an annual compounded growth of 14.5 percent. This compares to a growth of only 6.3 percent over the next 10 years. The slower prison growth is due to a slowing of intake from court, partially offset by an increase in time served due to the Three Strikes Law and other legislation limiting the ability of inmates to earn credits.

B. Comparison of Spring 2001 with Fall 2000 Projections

1. Institution Population

In the Fall 2000 forecast, the total institution population was expected to be 162,153 by December 31, 2000, 1,498 higher than the actual population. This difference is due primarily to fewer new admissions than expected, and more releases to parole than expected.

Table A

Comparison of Spring 2001 with Fall 2000 Projections
Institution Population¹
June 30, 2000 through June 30, 2006

<u>Year End June 30</u>	<u>Spring 2001 Projections</u>	<u>Fall 2000 Projections</u>	<u>Difference</u>
12/31/00	160,655 *	162,153	-1,498
2001	161,797	163,898	-2,101
2002	157,660	166,876	-9,216
2003	158,787	170,160	-11,373
2004	161,211	175,097	-13,886
2005	164,333	180,445	-16,112
2006	168,010	185,865	-17,855

*Actual Population

The Spring 2001 projection for the institution population is lower than forecast in the Fall Projections throughout the projection period. This is the result of a decrease in new admissions from court and returns from parole. The prison population is expected to be 161,797 by June 30, 2001, 2,101 lower than the Fall Projection.

We are forecasting the population on June 30, 2002 to be 157,660, 9,216 lower than the Fall 2000 Projection. Of this decrease, 5,388 are attributable to the expected impact of Proposition 36 effective July 1, 2001. This decrease is expected to continue throughout the 6-year projection period. By June 30, 2006 the population is expected to be 168,010, which is lower by 17,855 than projected in the fall.

¹ The population of the institutions consists of felons, civil narcotic addicts, county diagnostic cases, Youth Authority wards, persons from other states, federal prisoners, and county prisoners held for safekeeping. Felons include individuals under supervision in community-based facilities (in contract and non-contract beds) and State hospitals, as well as those actually in prison.

2. Parole Population

In the Fall 2000 Projection the parole population was expected to be 121,414 on December 31, 2000, which is exactly the actual population for that date.

Table B

Comparison of Spring 2001 with Fall 2000 Projections
Parole and Outpatient Population
June 30, 2000 through June 30, 2006

<u>Year End</u> <u>June 30</u>	<u>Spring 2001</u> <u>Projections</u>	<u>Fall 2000</u> <u>Projections</u>	<u>Difference</u>
12/31/00	121,414*	121,414	0
2001	122,249	122,880	-631
2002	126,149	125,164	985
2003	123,754	126,934	-3,180
2004	120,170	127,100	-6,930
2005	118,554	128,631	-10,077
2006	115,763	128,391	-12,628

*Actual Population

By June 30, 2001 the number of parolees and outpatients supervised in California is projected to be 122,249, a decrease of 631 from the previous projection. By June 30, 2002, the parole population is expected to be 126,149, which is 985 higher than projected in Fall 2000. This initial increase is due to the implementation phase of Proposition 36. A steady decline in the parole population is then expected through June 30, 2006, at which time the parole population is expected to be 115,763, which is 12,628 lower than previously projected. This decline is largely due to the expected decline in new admissions due to a slowing in the admissions trend and Proposition 36.

3. Other Populations

The civil addict institution population was 2,205 on December 31, 2000, 201 lower than projected in the fall. It is now estimated that the civil addict population will be 2,278 on June 30, 2001, which is 136 lower than the Fall Projections. By June 30, 2006 the population is expected to be 1,928. Similarly, the parole outpatient population decreased more than anticipated, dropping to 2,741 by December 31, 2000, which was 148 less than projected in the fall. It is now estimated that the parole outpatient population will be 2,773 on June 30, 2001, which is 171 higher than the Fall Projections. The parole outpatient population is expected to be 2,603 by June 30, 2006.

Figures 1 and 2 graphically display the Spring 2001 Projections for the institution and parole and outpatient populations. Figure 1 shows the actual and projected institution population, while Figure 2 shows the actual and projected California Supervised parole and outpatient populations. Both figures are for FY 1990-91 through 2005-06.

Figure 1
Total Institution Population
Actual and Projected
Fiscal Years 1990-91 through 2005-06

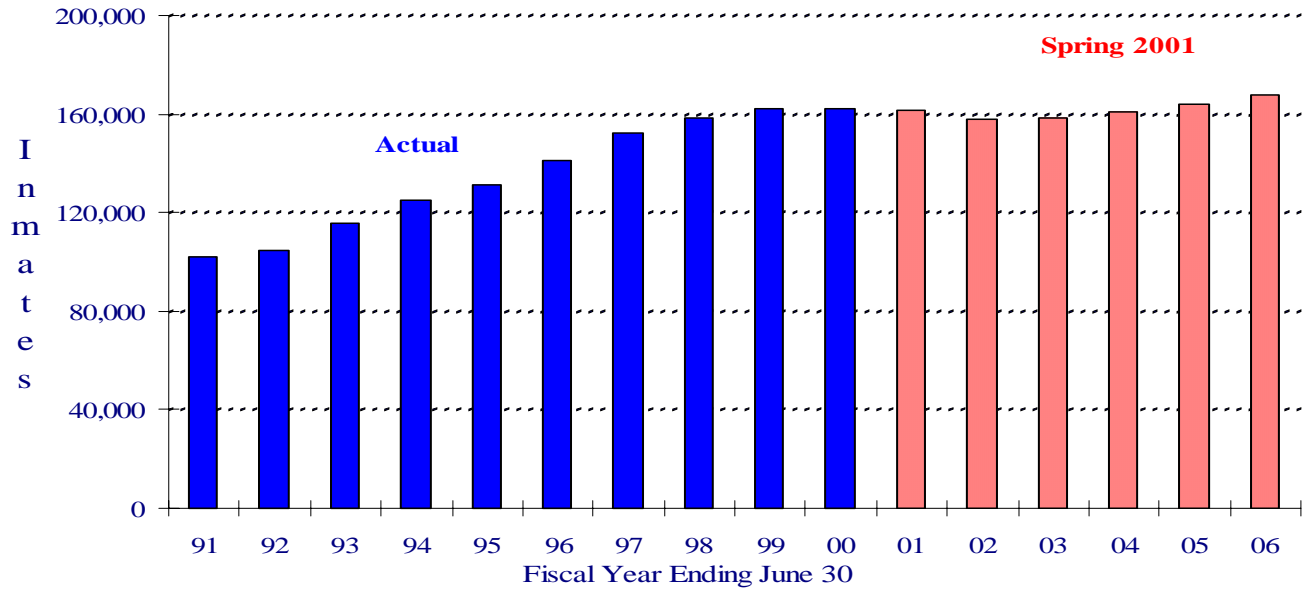
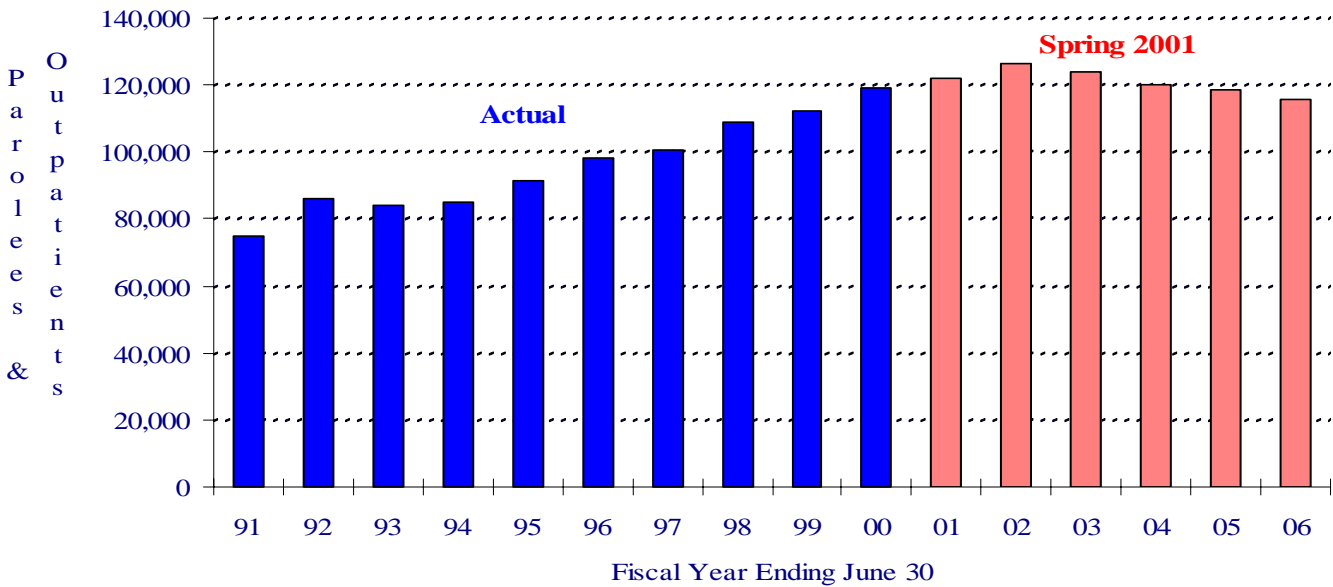


Figure 2
Total Parole and Outpatient Population
California Supervised, Actual and Projected
Fiscal Years 1990-91 through 2005-06



II. PREMISES

Figure 3
 Total Felon Admissions*
 Actual and Projected
 Fiscal Years 1990-91 through 2005-06

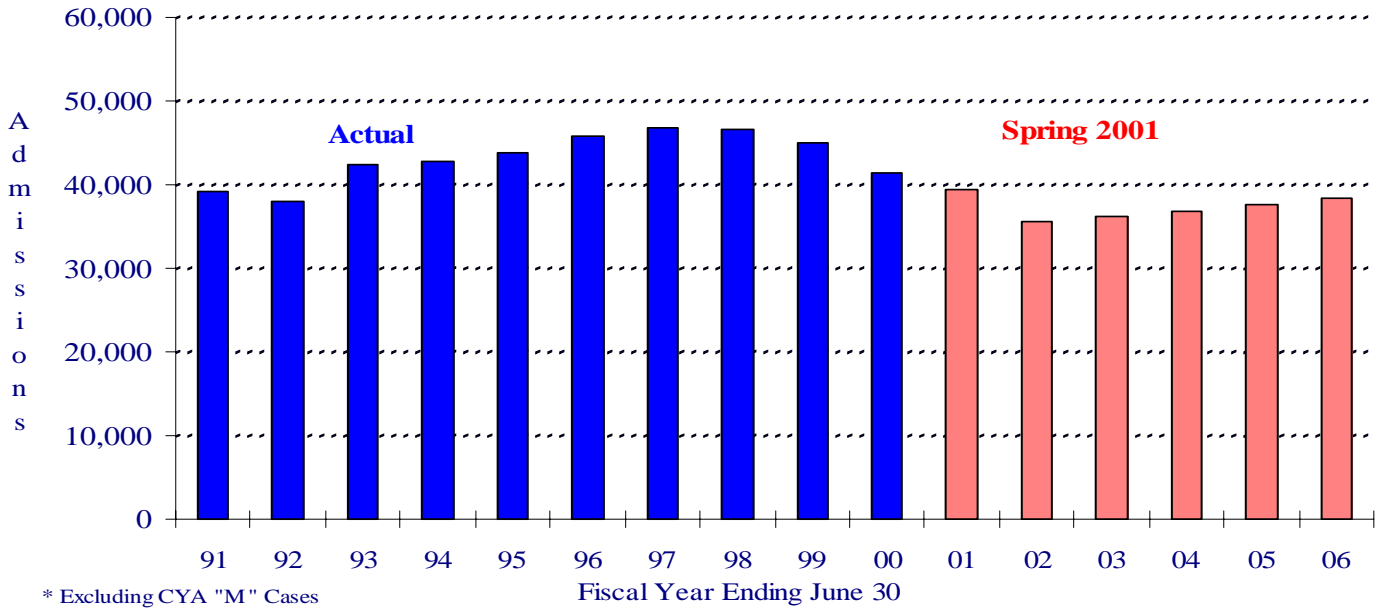
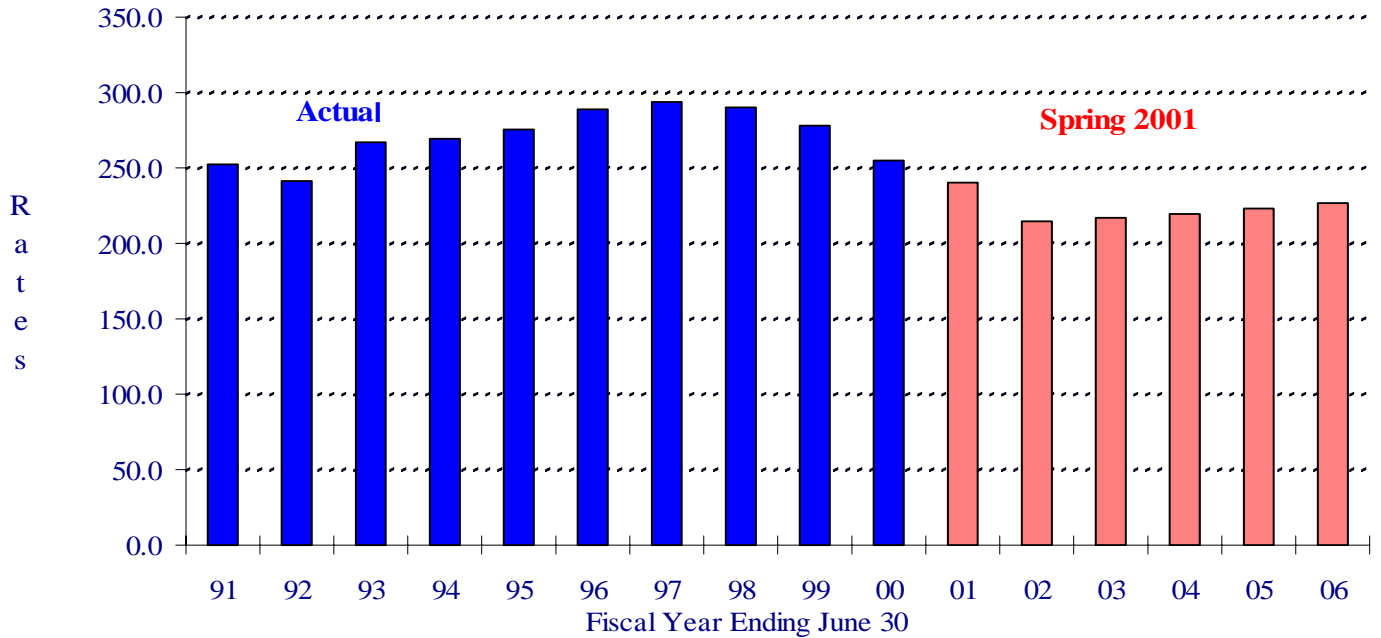


Figure 4
 Total Felon Admission Rates
 Actual and Projected
 Fiscal Years 1990-91 through 2005-06



PREMISES

Figures 3 and 4 on the preceding page display the Spring 2001 Projections for felon admissions. Figure 3 shows the actual and projected felon admissions, while Figure 4 shows the actual and projected felon admission rates (per 100,000 California residents aged 18-49). Both figures are for FY 1990-91 through 2005-06.

C. Felon Admissions

Table C, below, summarizes actual felon admissions to state prison from FY 1990-91 through FY 1999-00, while Table D displays the projected admissions from FY 2000-01 through FY 2005-06. Consistent with past practice, admission rates displayed in Tables C and D are expressed as the number of felon admissions to prison from court per 100,000 California residents, aged 18-49.

Table C

Actual Total Felon Admissions To Prison
Fiscal Years 1990-91 through 1999-00

<u>Fiscal Year</u>	<u>Number of CDC Felon Admissions¹</u>	<u>State Population Aged 18-49 (In Thousands)</u>	<u>Admission Rate²</u>
1990-91	39,175	15,532.3	252.2
1991-92	38,037	15,737.4	241.7
1992-93	42,339	15,846.2	267.2
1993-94	42,713	15,850.2	269.5
1994-95	43,707	15,844.2	275.9
1995-96	45,876	15,860.8	289.2
1996-97	46,750	15,930.4	293.5
1997-98	46,512	16,039.1	290.0
1998-99	44,984	16,170.3	278.2
1999-00	41,473	16,303.3	254.4

¹ Not including CYA "M" cases, other state/federal admissions, or direct admissions to parole

² Number of CDC felon admissions per 100,000 California state residents, aged 18-49

There has been an absolute decline in admissions for the last three fiscal years. The total admissions for FY 1999-00 were 41,473, down 7.8 percent from FY 1998-99. This continued decline in admissions has contributed significantly to a decline in total institution population.

In the last six months (July-December 2000), total admissions were 19,618. This is 5.7 percent lower than admissions for the same time period one year ago, and 322 lower than projected in Fall 2000.

As shown in Table D, there is a significant change in the Spring 2001 felon admissions projection when compared to the Fall 2000 Projections. As noted in the table, the projected decrease in admissions during FY 2001/02 is due primarily to the expected implementation of Proposition 36 (discussed in Section D). Projected admissions (Spring 2001, Final) gradually increase over the next four years due to the forecasted long-term admission trend.

Admissions are projected based on current trends (Spring 2001, Baseline), estimated impact of legislation (Prop 36), seasonality, and projected state population aged 18-49.

Table D

Projected Total Felon Admissions¹
(Without Incapacitation Adjustment)
Fiscal Years 2000-01 through 2005-06

Fiscal <u>Year</u>	Projected <u>Fall 2000</u>	<u>Spring 2001</u>		<u>Difference</u>			Adm <u>Rate</u>
		<u>Baseline</u>	<u>Final</u>	<u>Baseline</u>	<u>Prop 36</u>	<u>Final</u>	
2000/01	40,023	39,476	39,476	-547	0	-547	240.4
2001/02	40,032	39,196	35,610	-836	-3,586	-4,422	215.2
2002/03	40,603	39,348	36,295	-1,255	-3,053	-4,308	217.6
2003/04	41,481	39,960	36,840	-1,521	-3,120	-4,641	219.5
2004/05	42,493	40,763	37,582	-1,730	-3,181	-4,911	222.8
2005/06	43,515	41,627	38,393	-1,888	-3,234	-5,122	226.9

¹ Not including CYA 'M' cases and other state/federal admissions, or direct admissions to parole

D. Significant Chaptered Legislation and Initiatives

1. Proposition 36

The Spring 2001 Projections will include the projected impact of Proposition 36, The Substance Abuse and Crime Prevention Act of 2000, effective July 1, 2001, which was passed on November 7, 2000. This law provides that persons convicted of a non-violent drug possession offense shall receive probation and conditional drug treatment rather than commitment to prison. In addition, parole may not be suspended or revoked for commission of a non-violent drug possession offense. This will result in lower projected institution and parole populations.

2. Legislation

A total of 46 legislative bills were chaptered since the Fall 2000 Projections, 23 of which will have no direct impact on the state prison system.

The following chaptered legislation will have an impact on the state prison system, and, therefore, was included in the Spring 2001 Projections:

1. Chapter 142, Statutes of 2001 (AB 1300, Rod Pacheco & Oller), provides longer periods of parole for persons convicted of specified violent sex offenses. This legislation will result in additional time on parole and a resultant additional time in prison as the Pend-Rev, PV-RTC and PAL rates increase, affecting an estimated 1,668 persons in FY 1998/99 with an increase in total ADP of 3,021 by 2022/23.

The following legislative bills were chaptered which will have an impact on the state prison system. However, because the impact of the increase in length of confinement could not be estimated for these bills, it is not possible to include them in the Spring 2001 Projections.

1. Chapter 322, Statutes of 2001 (AB 1098, Romero), creates a new alternate felony/misdemeanor for any person to expose a person to the risk of great bodily injury by affecting the integrity of a clinical laboratory test through improper methods. This legislation could result in some persons new to state prison.
2. Chapter 673, Statutes of 2001 (AB 1348, Runner), provides that an owner of a registered trademark must sign, under penalty of perjury, a written notice to another person who is infringing on his or her registered trademark. This legislation could result in some persons new to state prison.
3. Chapter 627, Statutes of 2001 (AB 1449, Florez & Margett), broadens the scope of battery by including any peace officer as a victim; reduces the penalty from a felony to an alternate felony/misdemeanor; and creates two new alternate felony/misdemeanor offenses for battery by gassing committed by persons confined in either a CYA or local detention facility. This legislation could result in some persons new to state prison.
4. Chapter 919, Statutes of 2001 (AB 1789, Zettel), creates a new enhancement for any person who personally inflicts great bodily injury on a person who is under the age of 5 years old, in the commission or attempted commission of a felony. This legislation could result in some persons serving additional time in prison.
5. Chapter 689, Statutes of 2001 (AB 1808, Wayne), allows for the imposition of 1/3 the term for any enhancement for a consecutive offense regardless of whether the offense is violent or not, and allows for an unlimited number of enhancements to be imposed for specified sex offenses. This legislation could result in some persons serving additional time in prison.
6. Chapter 324, Statutes of 2001 (AB 1881, Gallegos), provides that time spent by mentally disordered offenders on outpatient status shall not be credited towards their term of prison

or parole commitment. This legislation could result in some persons serving additional time in prison and/or on parole.

7. Chapter 236, Statutes of 2001 (AB 1899, Havice), broadens the scope of battery on a peace officer to include non-sworn employees of probation departments to the list of occupations for which the offense applies. This legislation could result in some persons new to state prison.
8. Chapter 668, Statutes of 2001 (AB 1961, Machado), broadens the scope of the term “machinegun” to include weapons that can be readily restored to shoot automatically, as defined. This legislation could result in some persons new to state prison.
9. Chapter 153, Statutes of 2001 (AB 1988, Strickland), provides that any inmate released on parole for a conviction of lewd act with child or continuous sexual abuse of a child, shall not reside, for the duration of his or her period of parole, within one-quarter mile of any school, as specified. This legislation could result in more persons failing the conditions of their parole and returning to prison.
10. Chapter 400, Statutes of 2001 (AB 1989, Dickerson), broadens the scope of an existing alternate felony/misdemeanor to include any person convicted of a misdemeanor for knowingly and maliciously preventing any person from testifying, who also within 10 years owns or possesses a firearm. This legislation could result in some persons new to state prison.
11. Chapter 620, Statutes of 2001 (AB 1993, Romero), creates a new felony for any peace officer who knowingly, willfully and intentionally places, manufactures or moves any physical matter, with the intent that the action will result in a person being charged with a crime. This legislation could result in some persons new to state prison.
12. Chapter 634, Statutes of 2001 (AB 2232, Oller), broadens the definition of the term injury to include the denial of access to legitimate users of a computer system, network, or program and increases the penalty from an alternate felony/ misdemeanor to a felony for anyone who introduces any computer contaminant. This legislation could result in some persons new to state prison.
13. Chapter 276, Statutes of 2001 (AB 2279, Dutra), provides that every cremated remains disposer must provide the person authorizing the scattering and the funeral establishment, crematory or cemetery with a signed declaration stating under the penalty of perjury that the scattering was performed at the stated date, time and place. This legislation could result in some persons new to state prison.
14. Chapter 669, Statutes of 2001 (AB 2425, Corbett), increases the penalty for a person who commits a second or subsequent violation of stalking, and creates a new alternate felony/misdemeanor for a person who commits a stalking offense with a specified prior felony. This legislation could result in some persons serving additional time in prison and some persons new to state prison.

15. Chapter 478, Statutes of 2001 (AB 2523, Rod Pacheco), increases the alternate felony/misdemeanor penalty for every person who, in the presence of any other person, draws or exhibits any loaded firearm in a rude or threatening manner, or who unlawfully uses any loaded firearm in any fight or quarrel upon the grounds of any day care center or any facility where programs are being conducted for persons under 18 years of age. This legislation could result in some persons serving additional time in prison.
16. Chapter 546, Statutes of 2001 (AB 2580, Cox), broadens the scope of an existing alternate felony/misdemeanor by adding cemeteries to other religious sites protected from vandalism. Broadens the scope of an existing felony by adding cemeteries to other religious sites protected from vandalism committed because of racial or religious prejudice. This legislation could result in some persons new to state prison.
17. Chapter 692, Statutes of 2001 (SB 370, Burton), repeals existing felony law for a person who commits an act with intent to procure the miscarriage of a woman, for a woman who solicits a miscarriage, and who solicits a woman to submit to any operation to procure a miscarriage. This legislation could result in fewer persons to prison.
18. Chapter 561, Statutes of 2001 (SB 580, Lewis), provides that any inmate released on parole for a conviction of a lewd act with a child or continuous sexual abuse of a child, shall not reside for the duration of the parole within one-quarter mile of any school. This legislation could result in more persons failing the conditions of their parole and returning to prison.
19. Chapter 657, Statutes of 2001 (SB 1784, Figueroa), broadens the scope and increases the penalty for persons who annoy or molest a child, after having entered an inhabited house without consent, who also have one of the newly designated sexual felony priors. This legislation could result in some persons new to state prison and some spending additional time in prison.
20. Chapter 198, Statutes of 2001 (SB 1802, Chesbro), broadens the scope of perjury to include a statement made to the State Board of Control that specified bills were submitted to and paid by the Board. This legislation could result in some persons new to state prison.
21. Chapter 805, Statutes of 2001 (SB 1865, Perata), creates a new alternate felony/misdemeanor for willfully or intentionally emitting an air contaminant, which causes great bodily injury or death. This legislation could result in some persons new to state prison.
22. Chapter 867, Statutes of 2001 (SB 1988, Speier), increases the penalty and fine for a second offense of offering or accepting a rebate for illegally soliciting clients for an attorney. Allows for the imposition of a fine in lieu of a prison sentence. This legislation could result in some persons spending additional time in prison and possibly fewer persons to prison.

The following were included in the Fall 2000 Projections:

Proposition 21: The Gang Violence and Juvenile Crime Prevention Act, effective March 8, 2000.

Statutes of 2000: Chapter 31, (AB 809, Lowenthal); Chapter 97, (AB 2063, Zettel).

A description of the above initiative and legislation may be found in the Fall 2000 Projections publication.

E. The Work Incentive Program (WIP)

This program allows eligible inmates to earn up to a six-month reduction per year in sentence length. The WIP applies to all felons who committed their offenses on or after January 1, 1983 and to those felons who committed their offenses before January 1, 1983 who chose to opt in. Approximately 73 percent of the June 30, 2000 eligible population was earning one-half sentence reduction, and participation is expected to continue at that level throughout the projection period. The Three Strikes Law limits credit earning to 20 percent for affected inmates. The Penal Code also limits persons who have been convicted of any violent felony to no more than 15 percent sentence reduction.

F. Court Sentences

As shown in Table E, the mean sentence for felons steadily increased in the first few years after implementation of the Three Strikes Law in March 1994 but has stabilized at about 54 months over the last three years. The average work incentive credit steadily decreased since the Three Strikes Law, but has stabilized at about 12 months in the last three years. Anticipated time to serve has stabilized at about 35 months over the last three years.

Table E

Average Sentence and Credits
In Months
Felon New Admissions and PV-WNTs
Fiscal Years 1992-93 through 1999-00

<u>Fiscal Year</u>	<u>Sentence</u> ¹	<u>Preconfinement Credits</u>	<u>WIP Credits</u> ²	<u>Time to Serve</u>
1992-93	47.8	6.6	17.6	23.6
1993-94	47.5	6.4	17.6	23.5
1994-95	50.9	6.9	15.0	29.0
1995-96	54.0	7.1	12.9	34.0
1996-97	56.0	7.1	12.5	36.4
1997-98	54.3	6.7	12.3	35.3
1998-99	54.6	6.7	12.5	35.4
1999-00	54.4	6.8	12.6	35.2

¹ Includes third-strike and other life commitments

² Work Incentive Program credits based on eligibility

G. Placement Need Projections

As in the Fall 2000 Projections, the Spring 2001 Projections of institution bed needs, by level, consider both inmate classification score level and administrative determinants, such as institutional security and public safety, as specified in Section 62010 of the California Department of Corrections' Operations Manual. It is assumed that the male felon reception center population will fluctuate proportionately with the changes in male felon intake. Special housing projections assume a constant proportion of the number of inmates of each classification level in each of these categories over the projection period.

H. Parole Violators

For the six-month period July-December 2000, there were 33,201 male felon parole violators (PV-RTCs and PendRevs) returned to custody, 402 more than projected in Fall 2000. The corresponding return rate was 54.7 percent, .8 percent higher than projected. It is anticipated that the impact of new drug and mental health programs will cause the return rate to decrease at the same pace as projected in the Fall 2000 Projections. Additionally, the implementation of Proposition 36, effective July 1, 2001, is expected to further reduce the return rate by about 4 points.

There were 7,077 male felon parole violators returned with new terms (PV-WNTs) for the July-December 2000 period, 322 less than projected in Fall 2000. The corresponding male felon PV-WNT rate was 11.7, .5 percent lower than projected in Fall 2000. The

Spring 2001 Projections assume the PV-WNT rate will be lower than projected in the Fall 2000 Projections due to Proposition 36. Additionally, the implementation of Proposition 36, effective July 1, 2001, is expected to further reduce the PV-WNT rate by about 0.6 points.

The graphs on the following pages illustrate actual and projected parole return numbers and rates. Figure 5 displays the actual number of male felon parole violator returns by quarter since June 1990. Figure 6 shows the male felon PV-RTC/PendRev rates by quarter from June 1990 to June 2006, while Figure 7 tracks the male felon PV-WNT rates.

I. Felon Parole Population

On December 31, 2000, the felon parole population was 117,377, which is only 134 lower than projected in Fall 2000. Between July 1, 2000 and December 31, 2000, this population increased by 1,891.

For the six-month period July-December 2000, there were 15,272 male felon parolees suspended to parolee-at-large (PAL) status, 717 more than projected in Fall 2000. The corresponding PAL rate was 29.6, 1.6 higher than projected. The Spring 2001 Projections assume that the male felon PAL rate will be slightly higher by FY 2001-02, compared to the Fall Projections.

There were 15,197 male felon parolees discharged from parole over the last six months. This was 599 more than projected in Fall 2000. The corresponding discharge rate was 24.2, 1.1 higher than projected. The Spring 2001 Projections assume that the male felon discharge rate will be correspondingly higher by FY 2001-02 compared to the Fall 2000 Projections. Additionally, Proposition 36 is expected to slightly increase the number of discharges from parole.

Figure 5
 Male Felon Parole Violator Returns
 June 1990 through December 2000

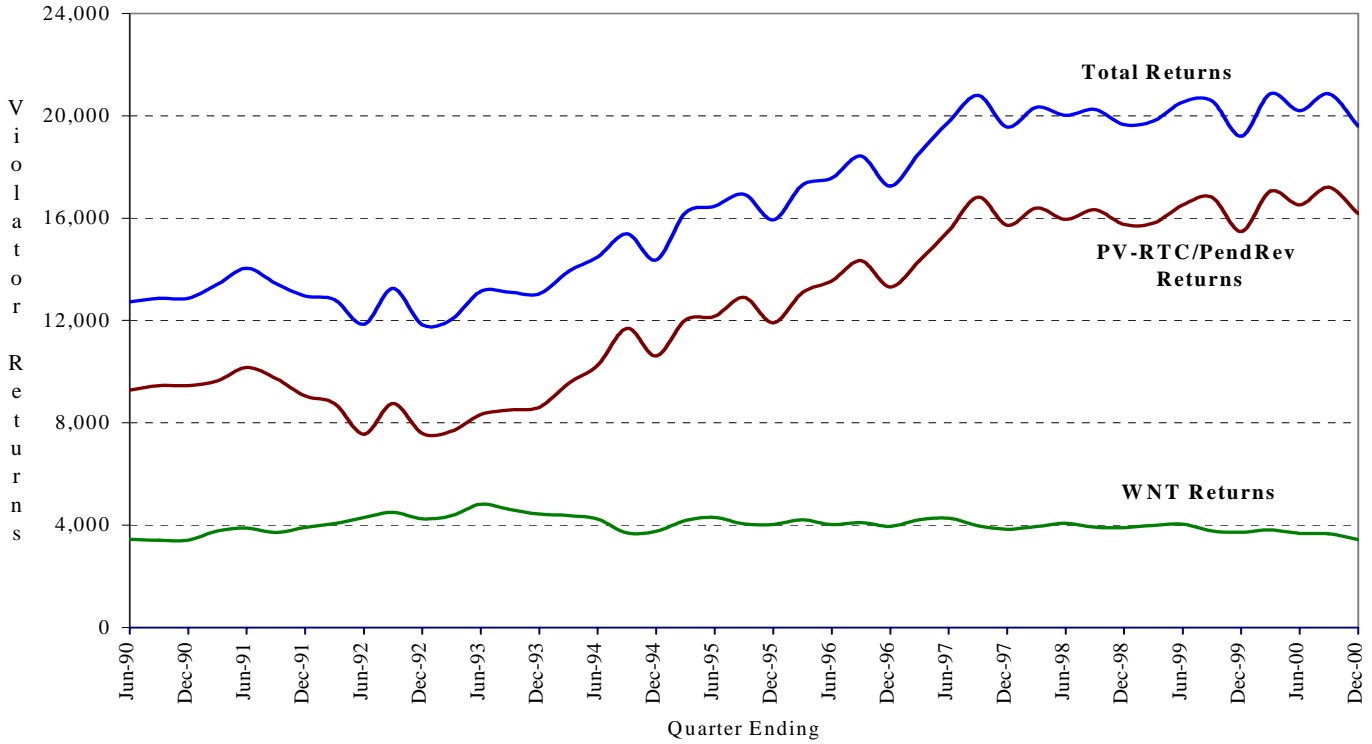
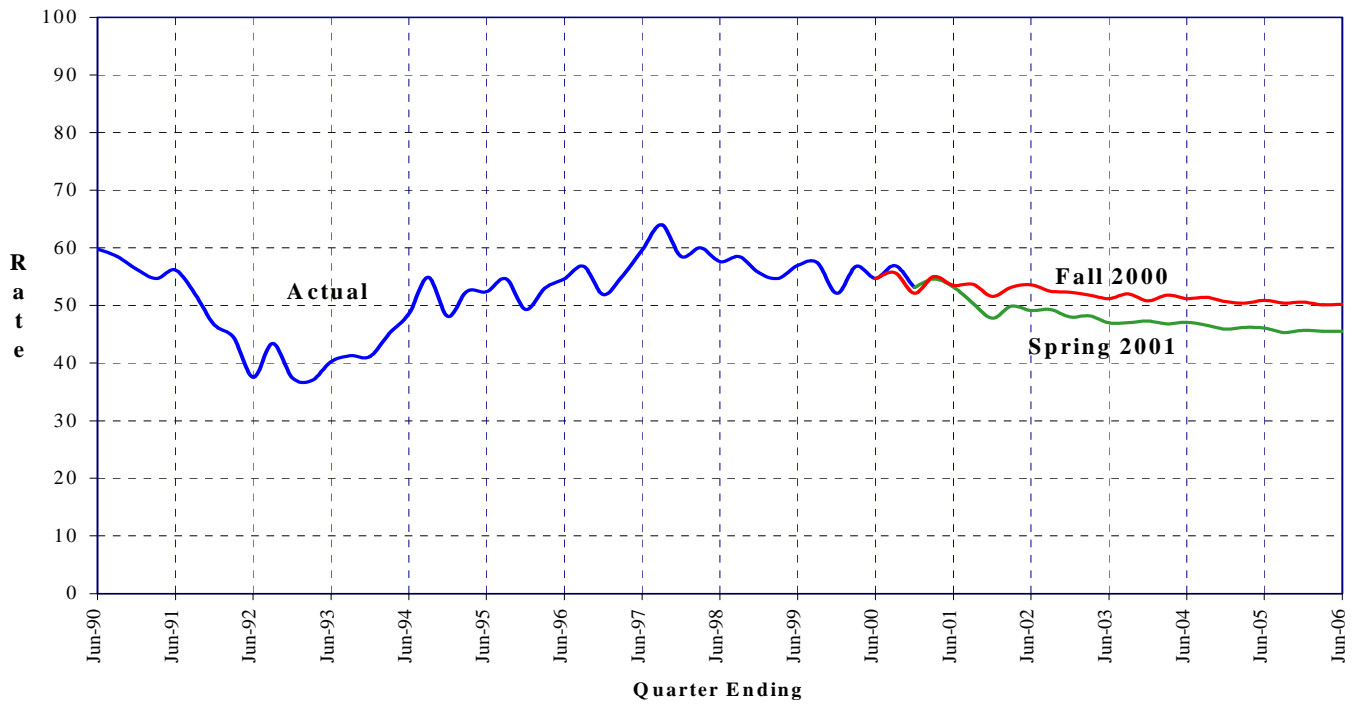
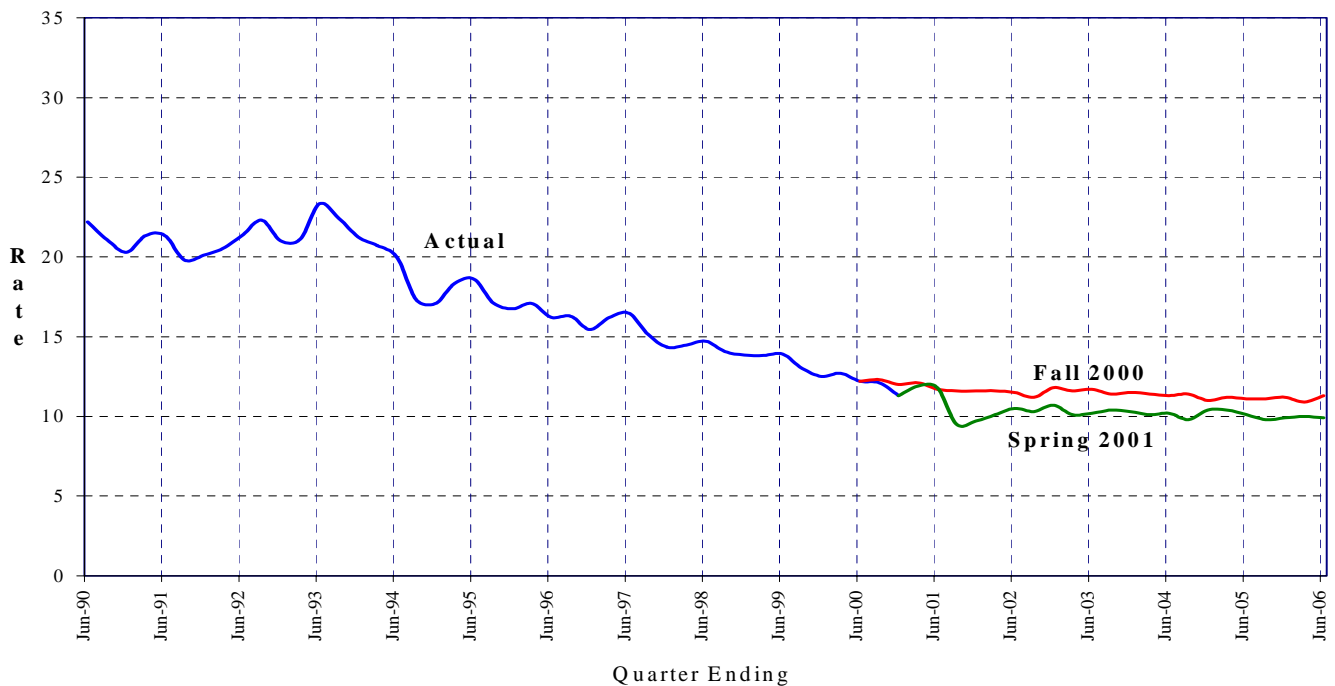


Figure 6
Male Felon PV-RTC/PendRev* Rates
June 1990 through June 2006



* PV-RTCs/PendRevs are parole violators returned to custody or pending revocation.

Figure 7
Male Felon PV-WNT* Rates
June 1990 through June 2006



* PV-WNTs are parole violators returned with new term.

III. SPRING 2001 POPULATION PROJECTIONS

The Spring 2001 Projections are summarized in Tables 1 and 2, and are presented in greater detail in Tables 3 through 16. Tables 3 and 4 present the quarterly institution populations, while Tables 5 and 6 present detailed projections by inmate placement needs. Tables 7 through 10 project the movement of institution populations (including civil narcotic addicts), and Tables 11 through 16 present detailed projections of the parole and outpatient population.

J. Six-Year Population Projections

Tables 1-2

Fiscal Years 2000-01 through 2005-06

Spring 2001 Projections

Table 1
 Institution Population
 June 30, 1991 through June 30, 2006

<u>As of June 30</u>	<u>Total</u>	<u>Total Males</u>	<u>Male Felons</u>	<u>Male Addicts</u>	<u>Male Others</u>	<u>Total Females</u>	<u>Female Felons</u>	<u>Female Addicts</u>	<u>Female Others</u>
Actual									
1991	101,995	95,339	92,615	2,280	444	6,656	5,999	615	42
1992	104,352	98,008	94,777	2,477	754	6,344	5,654	628	62
1993	115,534	108,302	104,768	3,067	467	7,232	6,450	732	50
1994	124,813	116,879	113,238	3,189	452	7,934	7,144	750	40
1995	131,342	122,514	119,063	3,114	337	8,828	8,026	766	36
1996	141,017	131,273	128,497	2,465	311	9,744	8,975	736	33
1997	152,506	141,669	139,239	2,163	267	10,837	10,188	583	66
1998	158,207	147,001	144,805	1,924	272	11,206	10,594	562	50
1999	162,064	150,581	148,621	1,703	257	11,483	10,949	495	39
2000	162,000	150,793	148,754	1,776	263	11,207	10,620	535	52
Projected									
2001	161,797	150,858	148,856	1,715	287	10,939	10,380	513	46
2002	157,660	147,425	145,596	1,542	287	10,235	9,722	467	46
2003	158,787	148,521	146,732	1,502	287	10,266	9,769	451	46
2004	161,211	150,846	149,084	1,475	287	10,365	9,866	453	46
2005	164,333	153,637	151,875	1,475	287	10,696	10,197	453	46
2006	168,010	156,881	155,119	1,475	287	11,129	10,630	453	46

Note: Others include county diagnostic cases, persons from other states, federal prisoners, county safekeepers, and California Youth Authority (CYA) wards.

Spring 2001 Projections

Table 2
 Parole and Outpatient Population
 Supervised in California
 June 30, 1991 through June 30, 2006

<u>As of June 30</u>	<u>Total</u>	<u>Total Males</u>	<u>Male Felons</u>	<u>Male Addicts</u>	<u>Male Others</u>	<u>Total Females</u>	<u>Female Felons</u>	<u>Female Addicts</u>	<u>Female Others</u>
Actual									
1991	74,997	67,657	63,268	2,210	2,179	7,340	6,414	734	192
1992	85,835	77,181	72,567	2,570	2,044	8,654	7,642	825	187
1993	83,887	75,735	70,809	2,839	2,087	8,152	7,024	941	187
1994	85,197	77,014	72,057	3,093	1,864	8,183	7,037	980	166
1995	91,456	83,048	78,450	3,346	1,252	8,408	7,325	960	123
1996	98,013	88,710	84,227	3,172	1,311	9,303	8,311	870	122
1997	100,828	91,002	87,202	2,684	1,116	9,826	8,817	880	129
1998	108,750	97,587	94,158	2,313	1,116	11,163	10,256	751	156
1999	112,494	100,716	97,593	1,954	1,169	11,778	10,944	678	156
2000	119,298	106,505	103,453	1,899	1,153	12,793	12,033	603	157
Projected									
2001	122,249	108,954	105,709	2,104	1,141	13,295	12,471	669	155
2002	126,149	112,577	109,325	2,111	1,141	13,572	12,737	680	155
2003	123,754	110,485	107,321	2,023	1,141	13,269	12,451	663	155
2004	120,170	107,222	104,108	1,973	1,141	12,948	12,147	646	155
2005	118,554	106,094	102,988	1,965	1,141	12,460	11,667	638	155
2006	115,763	103,430	100,324	1,965	1,141	12,333	11,540	638	155

Note: Others include co-ops and other state/federal parolees.

K. Two-Year Institution Population and Placement Needs Projections

Tables 3-10

Detail Fiscal Years 2000-01 and 2001-02

Fiscal Years 2000-01 through 2005-06 (Tables 5 & 6)

Spring 2001 Projections

Table 3 (Revised)
 Institution Population
 Fiscal Years 2000/01 through 2001/02

	Actual June 30 2000	Sep 30 2000	Dec 31 2000	Mar 31 2001	Jun 30 2001	Sep 30 2001	Dec 31 2001	Mar 31 2002	Jun 30 2002
Total Population	162,000	162,533	160,655	161,307	161,797	159,261	157,112	157,141	157,660
Men (Inc. CCC)	150,793	151,441	149,677	150,234	150,858	148,800	146,847	146,898	147,425
Women (Inc. CCC)	11,207	11,092	10,978	11,073	10,939	10,461	10,265	10,243	10,235
Total (Exc. CCC)	154,166	154,705	152,823	153,430	153,884	151,202	149,003	149,032	149,551
Men	143,402	144,048	142,278	142,791	143,379	141,184	139,181	139,232	139,759
Felons	141,663	142,297	140,591	141,088	141,677	139,545	137,606	137,703	138,230
Civil Narcotic Addicts	1,476	1,507	1,400	1,416	1,415	1,352	1,288	1,242	1,242
Others 1	263	244	287	287	287	287	287	287	287
Women	10,764	10,657	10,545	10,639	10,505	10,018	9,822	9,800	9,792
Felons	10,177	10,096	9,994	10,082	9,946	9,475	9,297	9,288	9,279
Civil Narcotic Addicts	535	522	505	511	513	497	479	466	467
Others 1	52	39	46	46	46	46	46	46	46
Community Correctional Centers 2	7,834	7,828	7,832	7,877	7,913	8,059	8,109	8,109	8,109
Total Males	7,391	7,393	7,399	7,443	7,479	7,616	7,666	7,666	7,666
Male Felons	7,091	7,093	7,099	7,143	7,179	7,316	7,366	7,366	7,366
Male Civil Narcotic Addicts	300	300	300	300	300	300	300	300	300
Female Felons	443	435	433	434	434	443	443	443	443

1 Others include county diagnostic cases, other state/federal prisoners, safekeepers, and CYA wards.

2 Community Correctional Centers data are based on the bed activation schedule provided by the Parole and Institutions Divisions.

Note: Data through December 2000 are actual.

Spring 2001 Projections

Table 4 (Revised)
 Average Daily Institution Population
 Fiscal Years 2000/01 through 2001/02

	FY 2000/01 Avg	Sep 30 2000	Dec 31 2000	Mar 31 2001	Jun 30 2001	FY 2001/02 Avg	Sep 30 2001	Dec 31 2001	Mar 31 2002	Jun 30 2002
Total Population	161,514	162,108	161,784	160,745	161,420	158,297	160,587	158,212	156,887	157,503
Men (Inc. CCC)	150,495	150,975	150,786	149,778	150,443	147,917	149,890	147,880	146,635	147,261
Women (Inc. CCC)	11,019	11,133	10,998	10,967	10,977	10,380	10,696	10,332	10,252	10,241
Total (Exc. CCC)	153,664	154,281	153,957	152,906	153,513	150,217	152,552	150,144	148,778	149,394
Men	143,080	143,587	143,393	142,372	142,970	140,279	142,298	140,255	138,969	139,595
Felons	141,346	141,830	141,617	140,671	141,267	138,690	140,626	138,648	137,418	138,066
Civil Narcotic Addicts	1,460	1,508	1,502	1,414	1,415	1,303	1,384	1,321	1,264	1,242
Others 1	274	249	274	287	287	287	287	287	287	287
Women	10,584	10,694	10,564	10,534	10,543	9,938	10,255	9,889	9,809	9,798
Felons	10,022	10,118	10,008	9,978	9,985	9,408	9,704	9,354	9,290	9,285
Civil Narcotic Addicts	517	531	517	509	512	483	505	489	472	467
Others 1	44	45	39	46	46	46	46	46	46	46
Community Correctional Centers 2	7,850	7,827	7,827	7,839	7,907	8,080	8,034	8,067	8,109	8,109
Total Males	7,415	7,388	7,393	7,406	7,473	7,637	7,593	7,624	7,666	7,666
Male Felons	7,115	7,088	7,093	7,106	7,173	7,337	7,293	7,324	7,366	7,366
Male Civil Narcotic Addicts	300	300	300	300	300	300	300	300	300	300
Female Felons	435	439	434	434	434	443	441	443	443	443

1 Others include county diagnostic cases, other state/federal prisoners, safekeepers, and CYA wards.

2 Community Correctional Centers data are based on the bed activation schedule provided by the Parole and Institutions Divisions.

Note: Data through December 2000 are actual.

Spring 2001 Projections

Table 5
 Projected Placement Needs for Male Felon Institution Population
 Fiscal Years 2000/01 through 2005/06

<u>Fiscal Year</u>	<u>Fiscal Quarter</u>	<u>Reception Center</u>	<u>Level I</u>	<u>Level II</u>	<u>Level III</u>	<u>Level IV</u>	<u>Special PHU</u>	<u>Housing SHU</u>	<u>Total Housing</u>	<u>Grand Total</u>
2000/01	September 30	21,728	34,818	31,650	33,760	24,745	29	2,660	2,689	149,390
	December 31	20,741	34,159	31,240	33,830	25,045	26	2,649	2,675	147,690
	March 31	21,455	33,271	32,335	33,500	25,075	30	2,565	2,595	148,231
	June 30	21,345	33,366	32,565	33,640	25,320	30	2,590	2,620	148,856
2001/02	September 30	19,535	32,991	32,215	33,825	25,640	30	2,625	2,655	146,861
	December 31	19,185	32,162	31,445	33,675	25,835	30	2,640	2,670	144,972
	March 31	19,995	31,779	31,105	33,565	25,945	30	2,650	2,680	145,069
	June 30	20,030	31,826	31,170	33,725	26,145	30	2,670	2,700	145,596
2002/03	June 30	19,260	32,012	31,425	34,355	26,910	30	2,740	2,770	146,732
2003/04	June 30	19,005	32,559	31,935	35,075	27,665	30	2,815	2,845	149,084
2004/05	June 30	18,690	33,340	32,635	35,865	28,415	30	2,900	2,930	151,875
2005/06	June 30	18,285	34,379	33,515	36,750	29,185	30	2,975	3,005	155,119

Note: These estimates assume that the male reception center population will increase proportionately with the increase in male felon intake.

Spring 2001 Projections

Table 6
 Projected Placement Needs for Total Male Institution Population
 Fiscal Years 2000/01 through 2005/06

<u>Fiscal Year</u>	<u>Fiscal Quarter</u>	<u>Reception Center</u>	<u>Level I</u>	<u>Level II</u>	<u>Level III</u>	<u>Level IV</u>	<u>Special PHU</u>	<u>Housing SHU</u>	<u>Total Housing</u>	<u>Grand Total</u>
2000/01	September 30	21,972	34,818	33,457	33,760	24,745	29	2,660	2,689	151,441
	December 31	21,028	34,159	32,940	33,830	25,045	26	2,649	2,675	149,677
	March 31	21,742	33,271	34,051	33,500	25,075	30	2,565	2,595	150,234
	June 30	21,632	33,366	34,280	33,640	25,320	30	2,590	2,620	150,858
2001/02	September 30	19,822	32,991	33,867	33,825	25,640	30	2,625	2,655	148,800
	December 31	19,472	32,162	33,033	33,675	25,835	30	2,640	2,670	146,847
	March 31	20,282	31,779	32,647	33,565	25,945	30	2,650	2,680	146,898
	June 30	20,317	31,826	32,712	33,725	26,145	30	2,670	2,700	147,425
2002/03	June 30	19,547	32,012	32,927	34,355	26,910	30	2,740	2,770	148,521
2003/04	June 30	19,292	32,559	33,410	35,075	27,665	30	2,815	2,845	150,846
2004/05	June 30	18,977	33,340	34,110	35,865	28,415	30	2,900	2,930	153,637
2005/06	June 30	18,572	34,379	34,990	36,750	29,185	30	2,975	3,005	156,881

Note: These estimates assume that the male reception center population will increase proportionately with the increase in male felon intake. Reception center includes others as defined on Table 1. Level II includes civil narcotic addicts.

**Population Projections Unit
Estimates and Statistical Analysis Section
Offender Information Services Branch**

**Department of Corrections
State of California
02/15/2001**

Spring 2001 Projections

Table 7
Movement of Male Felon Institution Population
Fiscal Years 1999/00 through 2001/02

<u>Fiscal Year</u>	<u>Fiscal Quarter</u>	<u>Total Intake</u>	<u>From Court</u>	<u>PV-WNT</u>	<u>PV-RTC</u>	<u>Other Intake</u>	<u>Total Outgo</u>	<u>First Parole</u>	<u>PV-RTC Parole</u>	<u>Other Outgo</u>	<u>Gain/Loss</u>	<u>Population End of Qtr</u>
1999/00	Jul-Sep	30,111	9,499	3,770	16,811	31	29,603	13,163	15,634	806	500	149,121
	Oct-Dec	28,201	8,980	3,716	15,481	24	29,895	13,506	15,562	827	-1,566	147,555
	Jan-Mar	30,024	9,136	3,814	17,042	32	29,021	13,006	15,151	864	863	148,418
	Apr-Jun	29,450	9,226	3,677	16,510	37	29,202	13,046	15,297	859	336	148,754
Total		117,786	36,841	14,977	65,844	124	117,721	52,721	61,644	3,356	133	
2000/01	Jul-Sep	29,604	8,701	3,659	17,206	38	28,963	12,541	15,598	824	636	149,390
	Oct-Dec	28,298	8,675	3,425	16,162	36	29,935	13,066	16,023	846	-1,700	147,690
	Jan-Mar *	29,280	8,759	3,668	16,830	23	28,739	12,699	15,573	467	541	148,231
	Apr-Jun *	29,127	8,947	3,668	16,488	24	28,502	12,492	15,542	468	625	148,856
Total		116,309	35,082	14,420	66,686	121	116,139	50,798	62,736	2,605	102	
2001/02	Jul-Sep *	26,656	7,847	2,985	15,798	26	28,651	12,234	15,930	487	-1,995	146,861
	Oct-Dec *	26,180	7,843	3,092	15,224	21	28,069	12,014	15,542	513	-1,889	144,972
	Jan-Mar *	27,285	7,992	3,240	16,029	24	27,188	11,635	15,079	474	97	145,069
	Apr-Jun *	27,332	8,206	3,366	15,733	27	26,805	11,364	14,911	530	527	145,596
Total		107,453	31,888	12,683	62,784	98	110,713	47,247	61,462	2,004	-3,260	

* Projected

Note: Other intake includes CYA 'M' cases and transfers from other states.
Other outgo includes discharges and deaths.

Spring 2001 Projections

Table 8
 Movement of Female Felon Institution Population
 Fiscal Years 1999/00 through 2001/02

<u>Fiscal Year</u>	<u>Fiscal Quarter</u>	<u>Total Intake</u>	<u>From Court</u>	<u>PV-WNT</u>	<u>PV-RTC</u>	<u>Total Outgo</u>	<u>First Parole</u>	<u>PV-RTC Parole</u>	<u>Other Outgo</u>	<u>Gain/Loss</u>	<u>Population End of Qtr</u>
1999/00	Jul-Sep	3,223	1,151	391	1,681	3,321	1,663	1,603	55	-100	10,849
	Oct-Dec	3,099	1,194	394	1,511	3,312	1,644	1,603	65	-196	10,653
	Jan-Mar	3,290	1,164	360	1,766	3,193	1,573	1,564	56	92	10,745
	Apr-Jun	3,073	1,135	379	1,559	3,175	1,580	1,537	58	-125	10,620
Total		12,685	4,644	1,524	6,517	13,001	6,460	6,307	234	-329	
2000/01	Jul-Sep	3,171	1,140	356	1,675	3,273	1,614	1,585	74	-89	10,531
	Oct-Dec	3,066	1,115	348	1,603	3,196	1,550	1,570	76	-104	10,427
	Jan-Mar *	3,208	1,107	395	1,706	3,119	1,545	1,528	46	89	10,516
	Apr-Jun *	3,093	1,049	379	1,665	3,229	1,536	1,660	33	-136	10,380
Total		12,538	4,411	1,478	6,649	12,817	6,245	6,343	229	-240	
2001/02	Jul-Sep *	2,667	908	273	1,486	3,129	1,451	1,628	50	-462	9,918
	Oct-Dec *	2,726	918	310	1,498	2,904	1,388	1,477	39	-178	9,740
	Jan-Mar *	2,769	939	335	1,495	2,778	1,264	1,482	32	-9	9,731
	Apr-Jun *	2,746	961	324	1,461	2,755	1,289	1,430	36	-9	9,722
Total		10,908	3,726	1,242	5,940	11,566	5,392	6,017	157	-658	

* Projected

Note: Other outgo includes discharges and deaths.

Spring 2001 Projections

Table 9
Movement of Male Civil Narcotic Addict Institution Population
Fiscal Years 1999/00 through 2001/02

<u>Fiscal Year</u>	<u>Fiscal Quarter</u>		<u>Total Intake</u>	<u>From Court</u>	<u>Outpatients Returned</u>	<u>Total Outgo</u>	<u>Outpatient Status</u>	<u>Other Outgo</u>	<u>Gain/Loss</u>	<u>Population End of Qtr</u>
1999/00	Jul-Sep		509	244	265	583	486	97	-83	1,620
	Oct-Dec		500	258	242	437	355	82	76	1,696
	Jan-Mar		537	290	247	477	416	61	43	1,739
	Apr-Jun		524	302	222	475	410	65	37	1,776
	Total		2,070	1,094	976	1,972	1,667	305	73	
2000/01	Jul-Sep		478	275	203	429	348	81	31	1,807
	Oct-Dec		496	298	198	584	529	55	-107	1,700
	Jan-Mar	*	584	378	206	568	452	116	16	1,716
	Apr-Jun	*	569	369	200	570	423	147	-1	1,715
	Total		2,127	1,320	807	2,151	1,752	399	-61	
2001/02	Jul-Sep	*	507	318	189	570	425	145	-63	1,652
	Oct-Dec	*	506	318	188	570	425	145	-64	1,588
	Jan-Mar	*	507	318	189	553	417	136	-46	1,542
	Apr-Jun	*	507	318	189	507	372	135	0	1,542
	Total		2,027	1,272	755	2,200	1,639	561	-173	

* Projected

Note: Other outgo includes discharges and deaths.

Spring 2001 Projections

Table 10
 Movement of Female Civil Narcotic Addict Institution Population
 Fiscal Years 1999/00 through 2001/02

<u>Fiscal Year</u>	<u>Fiscal Quarter</u>	<u>Total Intake</u>	<u>From Court</u>	<u>Outpatients Returned</u>	<u>Total Outgo</u>	<u>Outpatient Status</u>	<u>Other Outgo</u>	<u>Gain/Loss</u>	<u>Population End of Qtr</u>
1999/00	Jul-Sep	159	96	63	168	144	24	-15	480
	Oct-Dec	102	57	45	114	91	23	-8	472
	Jan-Mar	154	86	68	107	84	23	49	521
	Apr-Jun	129	85	44	109	89	20	14	535
	Total		544	324	220	498	408	90	40
2000/01	Jul-Sep	129	87	42	146	121	25	-13	522
	Oct-Dec	113	70	43	131	113	18	-17	505
	Jan-Mar *	126	82	44	120	92	28	6	511
	Apr-Jun *	122	80	42	120	87	33	2	513
	Total		490	319	171	517	413	104	-22
2001/02	Jul-Sep *	104	64	40	120	86	34	-16	497
	Oct-Dec *	102	63	39	120	84	36	-18	479
	Jan-Mar *	102	63	39	115	82	33	-13	466
	Apr-Jun *	103	64	39	102	71	31	1	467
	Total		411	254	157	457	323	134	-46

* Projected

Note: Other outgo includes discharges and deaths.

L. Two-Year Parole and Outpatient Population Projections

Tables 11-16

Detail Fiscal Years 2000-01 and 2001-02

Spring 2001 Projections

Table 11
 California Supervised Parole and Outpatient Population
 Fiscal Years 2000/01 through 2001/02

	Actual June 30 2000	Sep 30 2000	Dec 31 2000	Mar 31 2001	Jun 30 2001	Sep 30 2001	Dec 31 2001	Mar 31 2002	Jun 30 2002
Total Men and Women	119,298	119,032	121,414	121,714	122,249	124,691	126,599	126,476	126,149
Felons	115,486	115,204	117,377	117,645	118,180	120,597	122,482	122,346	122,062
Outpatients	2,502	2,551	2,741	2,773	2,773	2,798	2,821	2,834	2,791
Others 1	1,310	1,277	1,296	1,296	1,296	1,296	1,296	1,296	1,296
Total Men	106,505	106,137	108,262	108,502	108,954	111,099	112,922	112,861	112,577
Felons	103,453	103,093	105,037	105,254	105,709	107,837	109,643	109,573	109,325
Outpatients	1,899	1,914	2,084	2,107	2,104	2,121	2,138	2,147	2,111
Others 1	1,153	1,130	1,141	1,141	1,141	1,141	1,141	1,141	1,141
Total Women	12,793	12,895	13,152	13,212	13,295	13,592	13,677	13,615	13,572
Felons	12,033	12,111	12,340	12,391	12,471	12,760	12,839	12,773	12,737
Outpatients	603	637	657	666	669	677	683	687	680
Others 1	157	147	155	155	155	155	155	155	155

1 Others include co-ops and other state/federal parolees.

Note: Data through December 2000 are actual.

Spring 2001 Projections

Table 12
 Average Daily Parole and Outpatient Population
 Fiscal Years 2000/01 through 2001/02

	FY 2000/01 Avg	Sep 30 2000	Dec 31 2000	Mar 31 2001	Jun 30 2001	FY 2001/02 Avg	Sep 30 2001	Dec 31 2001	Mar 31 2002	Jun 30 2002
Total Men and Women	120,599	118,861	119,769	121,736	122,028	125,522	123,436	125,644	126,682	126,324
Felons	116,643	115,043	115,896	117,673	117,958	121,416	119,354	121,538	122,556	122,214
Outpatients	2,669	2,532	2,602	2,767	2,774	2,810	2,785	2,810	2,830	2,814
Others 1	1,287	1,286	1,271	1,296	1,296	1,296	1,296	1,296	1,296	1,296
Total Men	107,535	106,070	106,775	108,500	108,795	111,941	109,983	111,993	113,040	112,747
Felons	104,381	103,022	103,698	105,255	105,548	108,671	106,729	108,723	109,754	109,477
Outpatients	2,019	1,909	1,956	2,104	2,106	2,129	2,113	2,130	2,144	2,129
Others 1	1,136	1,139	1,122	1,141	1,141	1,141	1,141	1,141	1,141	1,141
Total Women	13,064	12,791	12,994	13,236	13,233	13,581	13,452	13,651	13,642	13,577
Felons	12,262	12,021	12,198	12,418	12,410	12,745	12,625	12,816	12,801	12,737
Outpatients	650	623	646	663	668	681	672	680	686	685
Others 1	152	147	150	155	155	155	155	155	155	155

1 Others include co-ops and other state/federal parolees.

Note: Data through December 2000 are actual.

**Population Projections Unit
Estimates and Statistical Analysis Section
Offender Information Services Branch**

**Department of Corrections
State of California
02/15/2001**

Spring 2001 Projections

Table 13
Movement of Male Felon Parole Population
Fiscal Years 1999/00 through 2001/02

<u>Fiscal Year</u>	<u>Fiscal Quarter</u>	<u>Total Intake</u>	<u>Paroled</u>	<u>Reinstated</u>	<u>Other Intake</u>	<u>Total Outgo</u>	<u>PV-WNT</u>	<u>PV-RTC</u>	<u>PALS</u>	<u>Other Outgo</u>	<u>Gain/Loss</u>	<u>Population End of Qtr</u>
1999/00	Jul-Sep	34,262	28,726	5,258	278	32,839	3,578	14,812	7,416	7,033	1,894	99,487
	Oct-Dec	33,862	29,029	4,599	234	31,312	3,558	13,768	6,558	7,428	2,480	101,967
	Jan-Mar	33,426	28,114	5,048	264	32,891	3,643	15,266	6,608	7,374	556	102,523
	Apr-Jun	33,742	28,311	5,189	242	32,741	3,520	14,856	7,195	7,170	930	103,453
Total		135,292	114,180	20,094	1,018	129,783	14,299	58,702	27,777	29,005	5,860	
2000/01	Jul-Sep	33,917	28,089	5,579	249	34,224	3,507	15,344	7,931	7,442	-360	103,093
	Oct-Dec	34,571	29,043	5,297	231	32,913	3,299	14,507	7,342	7,765	1,944	105,037
	Jan-Mar *	33,726	28,272	5,174	280	33,509	3,440	15,068	7,124	7,877	217	105,254
	Apr-Jun *	33,448	28,034	5,158	256	32,993	3,465	14,680	7,623	7,225	455	105,709
Total		135,662	113,438	21,208	1,016	133,639	13,711	59,599	30,020	30,309	2,256	
2001/02	Jul-Sep *	33,996	28,164	5,578	254	31,868	2,787	13,986	7,651	7,444	2,128	107,837
	Oct-Dec *	33,388	27,556	5,578	254	31,582	2,898	13,332	7,556	7,796	1,806	109,643
	Jan-Mar *	32,424	26,714	5,455	255	32,494	3,060	14,135	7,552	7,747	-70	109,573
	Apr-Jun *	31,860	26,275	5,324	261	32,108	3,156	13,865	7,409	7,678	-248	109,325
Total		131,668	108,709	21,935	1,024	128,052	11,901	55,318	30,168	30,665	3,616	

* Projected

Note: Other intake includes transfers direct from court, interstate parole unit (ISPU), and co-ops.
PALS are parolees-at-large with warrant issued (absconded from parole supervision).
Other outgo includes transfers to ISPU, discharges and deaths.

Spring 2001 Projections

Table 14
 Movement of Female Felon Parole Population
 Fiscal Years 1999/00 through 2001/02

<u>Fiscal Year</u>	<u>Fiscal Quarter</u>	<u>Total Intake</u>	<u>Paroled</u>	<u>Reinstated</u>	<u>Other Intake</u>	<u>Total Outgo</u>	<u>PV-WNT</u>	<u>PV-RTC</u>	<u>PALS</u>	<u>Other Outgo</u>	<u>Gain/Loss</u>	<u>Population End of Qtr</u>
1999/00	Jul-Sep	4,089	3,261	772	56	3,756	353	1,496	966	941	389	11,333
	Oct-Dec	3,958	3,242	670	46	3,534	374	1,322	845	993	420	11,753
	Jan-Mar	3,910	3,132	726	52	3,717	341	1,565	867	944	185	11,938
	Apr-Jun	3,835	3,114	676	45	3,738	347	1,395	960	1,036	95	12,033
Total		15,792	12,749	2,844	199	14,745	1,415	5,778	3,638	3,914	1,089	
2000/01	Jul-Sep	3,986	3,196	743	47	3,902	325	1,472	1,101	1,004	78	12,111
	Oct-Dec	3,901	3,116	751	34	3,697	328	1,425	940	1,004	229	12,340
	Jan-Mar *	3,856	3,073	749	34	3,805	370	1,512	940	983	51	12,391
	Apr-Jun *	3,950	3,196	720	34	3,870	356	1,479	994	1,041	80	12,471
Total		15,693	12,581	2,963	149	15,274	1,379	5,888	3,975	4,032	438	
2001/02	Jul-Sep *	3,829	3,079	716	34	3,540	233	1,292	1,001	1,014	289	12,760
	Oct-Dec *	3,639	2,865	740	34	3,560	269	1,310	948	1,033	79	12,839
	Jan-Mar *	3,518	2,746	738	34	3,584	309	1,298	937	1,040	-66	12,773
	Apr-Jun *	3,550	2,719	797	34	3,586	304	1,282	943	1,057	-36	12,737
Total		14,536	11,409	2,991	136	14,270	1,115	5,182	3,829	4,144	266	

* Projected

Note: Other intake includes transfers direct from court, interstate parole unit (ISPU), and co-ops.
 PALS are parolees-at-large with warrant issued (absconded from parole supervision).
 Other outgo includes transfers to ISPU, discharges and deaths.

Spring 2001 Projections

Table 15
 Movement of Male Civil Narcotic Addict Outpatient Population
 Fiscal Years 1999/00 through 2001/02

<u>Fiscal Year</u>	<u>Fiscal Quarter</u>	<u>Total Intake</u>	<u>Released from Institution</u>	<u>Reinstated</u>	<u>Total Outgo</u>	<u>PV-WNT</u>	<u>PV-RTC</u>	<u>RALS</u>	<u>Other Outgo</u>	<u>Gain/Loss</u>	<u>Population End of Qtr</u>
1999/00	Jul-Sep	552	486	66	540	1	249	86	204	26	1,980
	Oct-Dec	402	355	47	492	9	214	96	173	-86	1,894
	Jan-Mar	474	416	58	487	4	233	68	182	-28	1,866
	Apr-Jun	464	410	54	444	9	198	59	178	33	1,899
Total		1,892	1,667	225	1,963	23	894	309	737	-55	
2000/01	Jul-Sep	391	348	43	368	4	190	41	133	15	1,914
	Oct-Dec	560	529	31	396	11	177	46	162	170	2,084
	Jan-Mar *	475	452	23	452	15	163	54	220	23	2,107
	Apr-Jun *	447	423	24	450	15	158	51	226	-3	2,104
Total		1,873	1,752	121	1,666	45	688	192	741	205	
2001/02	Jul-Sep *	449	425	24	432	15	147	51	219	17	2,121
	Oct-Dec *	449	425	24	432	15	146	51	220	17	2,138
	Jan-Mar *	441	417	24	432	15	147	51	219	9	2,147
	Apr-Jun *	396	372	24	432	15	147	51	219	-36	2,111
Total		1,735	1,639	96	1,728	60	587	204	877	7	

* Projected

Note: RALS are releasees-at-large with warrant issued (absconded from outpatient supervision).
 Other outgo includes discharges and deaths.

Spring 2001 Projections

Table 16
 Movement of Female Civil Narcotic Addict Outpatient Population
 Fiscal Years 1999/00 through 2001/02

<u>Fiscal Year</u>	<u>Fiscal Quarter</u>	<u>Total Intake</u>	<u>Released from Institution</u>	<u>Reinstated</u>	<u>Total Outgo</u>	<u>PV-WNT</u>	<u>PV-RTC</u>	<u>RALS</u>	<u>Other Outgo</u>	<u>Gain/Loss</u>	<u>Population End of Qtr</u>
1999/00	Jul-Sep	158	144	14	163	3	55	33	72	-3	675
	Oct-Dec	97	91	6	124	1	40	23	60	-28	647
	Jan-Mar	100	84	16	136	1	61	13	61	-34	613
	Apr-Jun	102	89	13	108	1	43	8	56	-10	603
Total		457	408	49	531	6	199	77	249	-75	
2000/01	Jul-Sep	128	121	7	95	1	41	7	46	34	637
	Oct-Dec	119	113	6	99	1	38	5	55	20	657
	Jan-Mar *	104	92	12	95	0	44	12	39	9	666
	Apr-Jun *	99	87	12	96	0	42	12	42	3	669
Total		450	413	37	385	2	165	36	182	66	
2001/02	Jul-Sep *	98	86	12	90	0	40	12	38	8	677
	Oct-Dec *	96	84	12	90	0	39	12	39	6	683
	Jan-Mar *	94	82	12	90	0	39	12	39	4	687
	Apr-Jun *	83	71	12	90	0	39	12	39	-7	680
Total		371	323	48	360	0	157	48	155	11	

* Projected

Note: RALS are releasees-at-large with warrant issued (absconded from outpatient supervision).
 Other outgo includes discharges and deaths.