

# FALL 2002 POPULATION



**P  
R  
O  
J  
E  
C  
T  
I  
O  
N  
S**

**2003 - 2008**

**California  
Department of Corrections**

# **CALIFORNIA DEPARTMENT OF CORRECTIONS**

**EDWARD ALAMEIDA, Jr.**

*Director*

**KATHY M. KINSER**

*Chief Deputy Director*

*Support Services*

**E. A. MITCHELL**

*Deputy Director*

*Policy and Evaluation Division*

**ARTHUR CHUNG**

*Chief*

*Offender Information Services Branch*

**PAMELA HOFFMAN**

*Chief (A)*

*Estimates and Statistical Analysis Section*

**JACK LEONARD**

*Operations Research Specialist III*

---

## **Population Projections Unit**

**JACQUI CODER**

*Lead*

*Research Analyst II*

**JUNE DEVOE**

*Research Analyst II*

**SHELLEY BUTTLER**

*Staff Services Analyst*

## **ACKNOWLEDGMENTS**

Although the Estimates and Statistical Analysis Section is responsible for the semiannual publication of the Population Projections, others in the Department of Corrections made significant contributions that are greatly appreciated. Among those involved in the projections were (in alphabetical order) the:

- Board of Prison Terms
- Information Systems Division
- Institutions Division
- Office of Budget Management
- Parole and Community Services Division

**TABLE OF CONTENTS**

**PAGE**

---

**I. INTRODUCTION ----- 1**

**A. Factors Affecting Population ----- 3**

**B. Comparison of Fall 2002 with Spring 2002 Projections ----- 4**

**II. PREMISES----- 7**

**C. Felon Admissions----- 9**

**D. Significant Chaptered Legislation and Initiatives-----10**

**E. The Work Incentive Program (WIP) -----11**

**F. Court Sentences -----11**

**G. Placement Need Projections-----11**

**H. Parole Violators-----12**

**I. Felon Parole Population -----12**

**III. FALL 2002 POPULATION PROJECTIONS -----15**

**J. Six-Year Population Projections -----17**

**K. Two-Year Institution Population and Placement Needs Projections-----21**

**L. Two-Year Parole and Outpatient Population Projections-----31**

**M. Addendum -----39**

# I. INTRODUCTION

---

## INTRODUCTION

This document contains the California Department of Corrections' (CDC) projections of institution, parole, and outpatient populations for fiscal years (FY) 2002-03 through 2007-08. The projections are based upon the most current available data and include existing laws and regulations as well as any signed legislation that will come into effect during the current projections cycle. The projections do not include proposed legislation, programs, propositions, or policy changes that have not been signed or affirmed as of the completion of the projection process.

The Fall 2002 Projections include the impact of changes to local assistance in Los Angeles County. The projections do not include adjustments for the firefighter credit enhancement, which would allow certain inmates in firefighter camps to earn two days of credit for each day worked, or the population cap on the Civil Narcotic Addict program, which would reduce the Civil Narcotic Addict population to 954 by December 2002.

### **A. Factors Affecting Population**

- From June 30, 2001 through December 31, 2001, the total institution population declined by 4,355 inmates to 157,142. This decrease in six months was the largest drop in a six-month period since at least 1980 and countered the stability of the previous three years. This decrease was due to the implementation of Proposition 36, which diverts specific new court commitments to local drug treatment programs instead of prison.
- From December 31, 2001 through June 30, 2002, the total population increased by 837. This may indicate that the impact of Proposition 36 is diminishing.
- From June 30, 2001 through June 30, 2002, the male felon institution population declined by 2,398 inmates to 145,455. The need for Level I security beds in the male felon population decreased by 2,795, a reflection of the impact of Proposition 36. The need for Level III security beds increased by 1,125 while the need for Reception Center (RC), Level II and Level IV beds remained relatively flat.
- On July 31, 2002, the total institution population was 159,129, an increase of 1,150 since June 30, 2002. This increase was due primarily to a need to reduce the number of parole violators being held in Los Angeles County jails under local assistance contract while awaiting revocation hearings and returns to prison. Due to budget cuts, Los Angeles County has required CDC to reduce the local assistance from 2,800 to a maximum of 1,500. The impact of this reduction is expected to continue through the end of September 2002.

**B. Comparison of Fall 2002 with Spring 2002 Projections**

**1. Institution Population**

In the Spring 2002 forecast, the total institution population was expected to be 157,881 by June 30, 2002, which is 98 lower than the actual population. The difference is due primarily to more new admissions and fewer parolees released to parole than expected.

The actual male felon bed needs by classification level were lower than projected in the RCs, Level I, Level IV, and special housing units (SHU) and higher than projected in Level II and Level III. (See Addendum.)

The following Table A compares the Fall 2002 Population Projections to the projections issued last spring.

Table A  
 Comparison of Fall 2002 with Spring 2002 Projections  
 Institution Population  
 June 30, 2003 through June 30, 2008

<u>Year End June 30</u>	<u>Fall 2002 Projections</u>	<u>Spring 2002 Projections</u>	<u>Difference</u>
2003	160,661	157,331	3,330
2004	161,039	157,898	3,141
2005	160,940	159,868	1,072
2006	160,675	162,857	-2,182
2007	160,578	166,473	-5,895
2008	161,199	-	-

Based on the previous discussion in section I.A, the Fall 2002 Population Projections reflect the impact of fewer Proposition 36 inmate diversions to local treatment and an increase in admissions and parole violators returned to custody. However, these population increases are higher than the Spring Projections only through FY 2005.

It is expected that while the June 30, 2003, inmate population will be 3,330 higher than projected in the Spring, the population is expected to be 160,675 by June 30, 2006, or 2,182 lower than the Spring 2002 Projections. This reflects a decrease in admissions and parole violators returned to custody. (See section I.I.C and D.)

Compared to the Spring Projections, the Fall 2002 projected male felon bed needs by classification level will be higher in Levels I through III for the first four years, then lower in the last two years mainly due to the decrease in the overall population. The need for RC beds will be higher and the need for Level IV and SHU beds will be lower throughout the projection cycle.

**2. Parole Population**

In the Spring 2002 Projections, the parole population was expected to be 119,848 on June 30, 2002, which is 488 lower than the actual population for that date. This difference is due mainly to fewer parolees returning to prison, fewer suspensions to the parolee-at-large status, and more reinstatements to parole than expected.

Table B

Comparison of Fall 2002 with Spring 2002 Projections  
Parole Population  
June 30, 2003 through June 30, 2008

<u>Year End June 30</u>	<u>Fall 2002 Projections</u>	<u>Spring 2002 Projections</u>	<u>Difference</u>
2003	117,233	117,233	0
2004	115,387	113,898	1,489
2005	114,305	111,024	3,281
2006	113,888	109,281	4,607
2007	113,937	107,681	6,256
2008	113,277	-	-

By June 30, 2003, the number of parolees supervised in California is projected to be 117,233, the same as expected in the Spring Projections. By June 30, 2007, the parole population is expected to be 113,937, which is 6,256 higher than the previous projection. This is mainly due to a decrease in parole violators returned to custody.

Unlike the Spring Projections, the decline in the parole population will be more moderate, decreasing to 114,305 by June 30, 2005. From June 30, 2005 through 2008, the parole population is expected to be relatively flat. This is due to the decrease in parole violators returned to custody, but offset by a decrease in admissions.

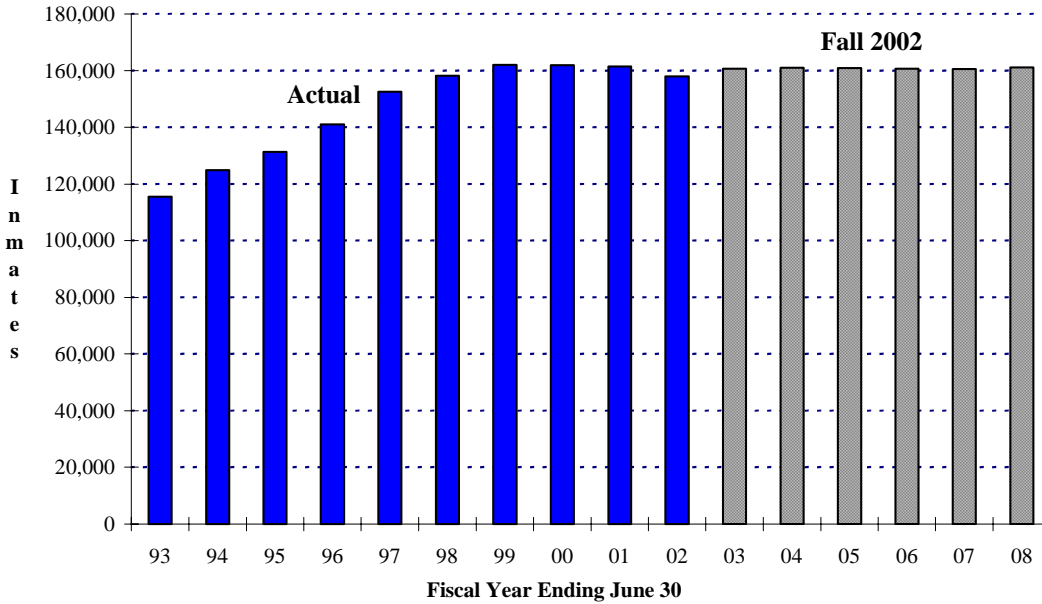
**3. Other Populations**

The civil addict institution population was 1,662 on June 30, 2002, only 64 lower than projected in the Spring Projections. It is now estimated that the civil addict population will be 1,626 on June 30, 2003, or 80 lower than the Spring Projections. By June 30, 2008, the population is expected to decline to 1,606. The parole outpatient population on June 30, 2002, was 2,673, precisely as predicted. It is estimated that the parole outpatient population will be 2,607 on June 30, 2003, which is 64 more than the Spring Projections. The parole outpatient population is expected to be 2,559 by June 30, 2008.

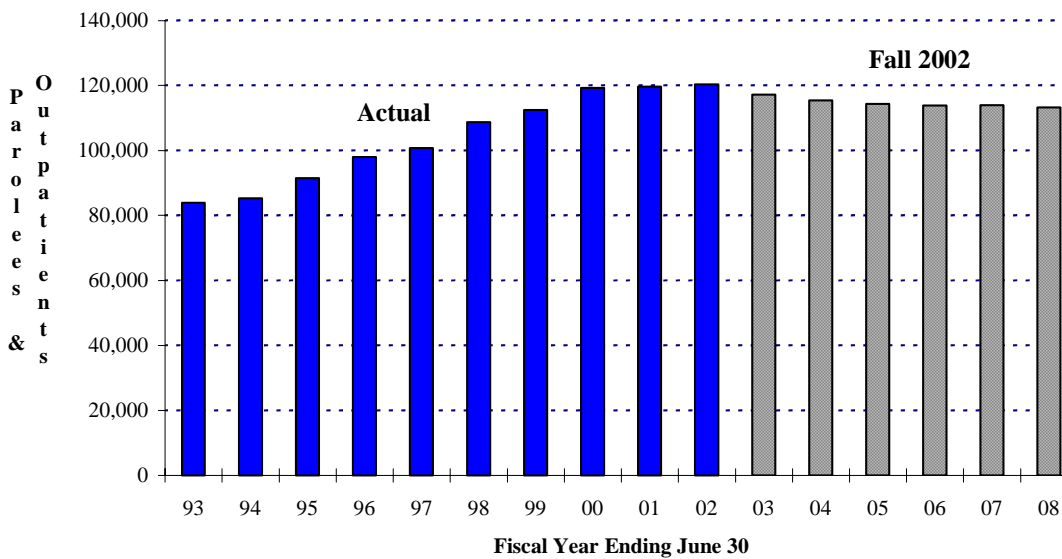


Figures 1 and 2 graphically display the Fall 2002 Projections for the institution and parole and outpatient populations. Figure 1 shows the actual and projected institution population, while Figure 2 shows the actual and projected California supervised parole and outpatient populations. Both figures are for FY 1992-93 through 2007-08.

**Figure 1**  
**Total Institution Population**  
**Fiscal Years 1992-93 through 2007-08**



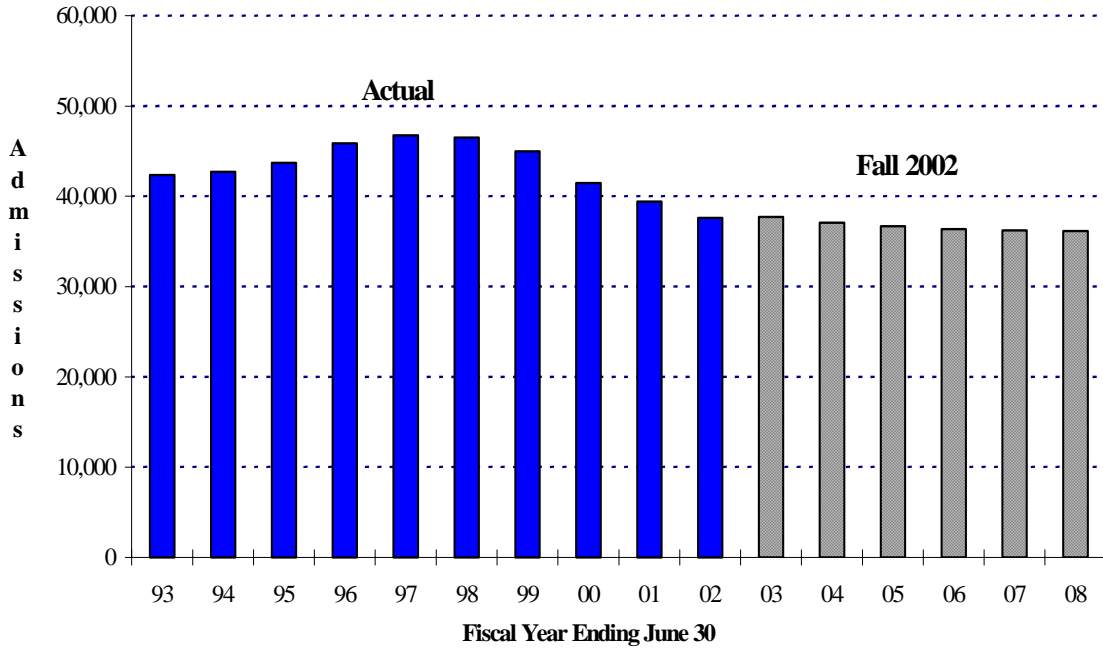
**Figure 2**  
**Total Parole Population**  
**Fiscal Years 1992-93 through 2007-08**



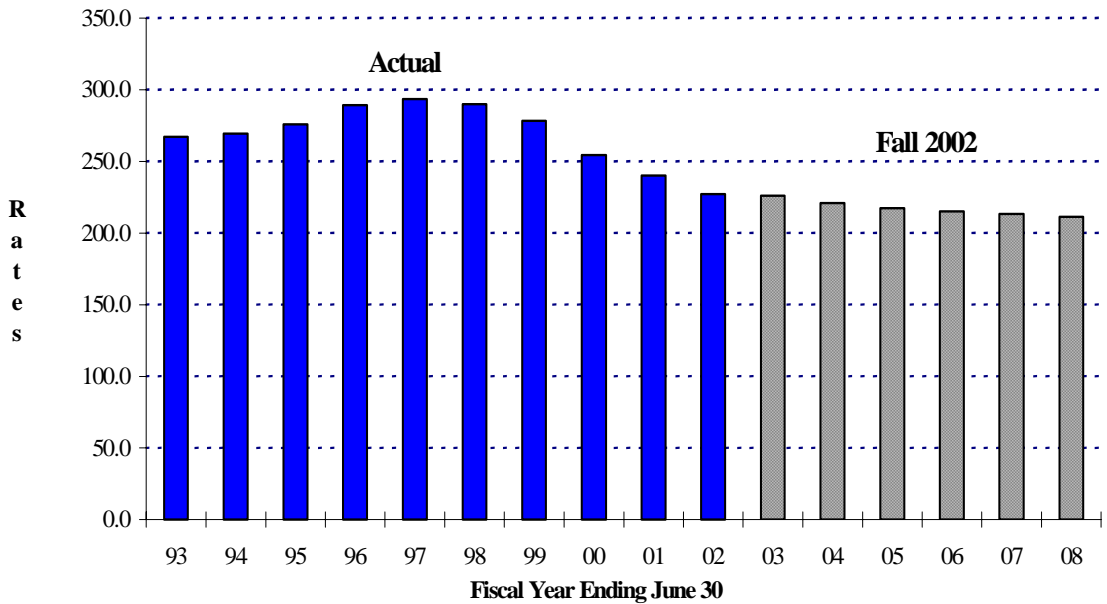
## II. PREMISES

---

**Figure 3**  
**Total Felon Admissions**  
**Actual and Projected**  
**Fiscal Years 1992-93 through 2007-08**



**Figure 4**  
**Total Felon Admission Rates**  
**Actual and Projected**  
**Fiscal Years 1992-93 through 2007-08**



**PREMISES**

Figures 3 and 4 on the preceding page display the Fall 2002 Projections for felon admissions. Figure 3 shows the actual and projected felon admissions, while Figure 4 shows the actual and projected felon admission rates per 100,000 California residents, aged 18-49. Both figures are for FY 1992-93 through FY 2007-08.

**C. Felon Admissions**

Table C, below, summarizes actual felon admissions to a CDC prison from FY 1992-93 through FY 2001-02, while Table D displays the projected felon admissions for FY 2002-03 through FY 2007-08. Consistent with past practices, the admission rates in both tables are expressed as the number of felon admissions to prison from court per 100,000 California residents, aged 18 to 49.

Table C

Actual Total Felon Admissions to Prison  
FY 1992-93 through FY 2001-02

<u>Fiscal Year</u>	<u>Number of CDC Felon Admissions*</u>	<u>State Population Aged 18-49 (In Thousands)</u>	<u>Admission Rate**</u>
1992-93	42,339	15,846.2	267.2
1993-94	42,713	15,850.2	269.5
1994-95	43,707	15,844.2	275.9
1995-96	45,876	15,860.8	289.2
1996-97	46,750	15,930.4	293.5
1997-98	46,512	16,039.1	290.0
1998-99	44,985	16,170.3	278.2
1999-00	41,472	16,303.3	254.4
2000-01	39,419	16,420.3	240.1
2001-02	37,605	16,549.4	227.2

\* Not including CYA "M" cases, other state/federal admissions, or direct admissions to parole.  
\*\* Number of CDC felon admissions per 100,000 California state residents, aged 18-49.

Although there has been an absolute decline in admissions for the last five fiscal years, the downward trend has begun to slow down over the last fiscal year. Felon admissions for FY 2001-02 were 37,605, down 4.6 percent from FY 2000-01. This compares to declines of 7.8 percent and 5.0 percent in the previous two fiscal years.

In the last six months, January to June 2002, total admissions were 19,475, just 1.6 percent lower than admissions for the same time period one year ago. Admissions from July to December 2001 were 7.6 percent lower than admissions for the same time period one year ago, primarily due to the impact of Proposition 36.

As shown in Table D, the Fall 2002 felon admissions projection is higher than the Spring 2002 Projections for the first two years, then lower for the remaining four years. This initial increase is due to the fact that admissions for the last six months were 980 higher than anticipated in the Spring Projections.

Projected admissions are expected to decrease due to the long-term downward trend in admissions over the past ten years.

Admissions are projected based on current trends, estimated impact of seasonality, and projected state population aged 18-49.

Table D

Projected Total Felon Admissions\*  
FY 2002-03 through FY 2007-08

<u>Fiscal Year</u>	<u>Fall 2002</u>	<u>Spring 2002</u>	<u>Difference</u>	<u>Rate</u>
2002-03	37,707	36,604	1,103	226.1
2003-04	37,094	36,788	306	221.0
2004-05	36,679	37,313	-634	217.5
2005-06	36,405	37,991	-1,586	215.2
2006-07	36,239	38,740	-2,501	213.3
2007-08	36,156	-		211.5

**D. Significant Chaptered Legislation and Initiatives**

There were no initiatives or chaptered legislation since the Spring 2002 Projections.

The following were included in the Spring 2002 Projections:

**1. Initiatives**

Proposition 36, The Substance Abuse and Crime Prevention Act of 2000, effective July 1, 2001, which was passed on November 7, 2000.

**2. Legislation**

Statutes of 2001: Chapter 126, (Senate Bill (SB) 0009, Soto), Chapter 235, (Assembly Bill (AB) 0078, Alquist), Chapter 257, (AB 1709, Migden), Chapter 478, (AB 0245, Wyland), Chapter 485, (AB 1004, Bates), Chapter 486, (AB 1029, Oropeza), Chapter 517, (AB 0380, Wright), Chapter 544, (AB 0004, Bates), Chapter 559, (AB 1012, Corbett), Chapter 715, (AB 1277, Cardenas), Chapter 849, (AB 1078, Jackson), Chapter 937, (SB 0626, Perata)

A description of the above initiative and legislation may be found in the Spring 2002 Projections publication.

**E. The Work Incentive Program (WIP)**

This program allows eligible inmates to earn up to a six-month reduction per year in sentence length. The WIP applies to all felons who committed their offenses on or after January 1, 1983, and to those felons who committed their offenses before January 1, 1983, who chose to participate. Approximately 73 percent of the June 30, 2000 eligible population was earning one-half sentence reduction and participation is expected to continue at that level throughout the projection period. The Three Strikes Law limits credit earning to 20 percent for affected inmates. The Penal Code also limits persons who have been convicted of any violent felony to no more than a 15 percent sentence reduction.

**F. Court Sentences**

As shown in Table E, the average sentence for newly admitted felons and parole violators returned with new terms (PV-WNT) is 53 months. For the sixth consecutive year, the average work incentive credit is stabilized at 12 months. The anticipated time to serve continued to decline to approximately 34 months.

Table E

Average Sentence and Credits  
For Felon New Admissions and PV-WNTs  
(in months)

<u>Fiscal Year</u>	<u>Sentence</u> <sup>1</sup>	<u>Pre-confinement Credits</u>	<u>WIP Credits</u> <sup>2</sup>	<u>Time to Serve</u>
1992-93	48.0	6.6	17.7	23.7
1993-94	47.6	6.4	17.6	23.6
1994-95	50.9	6.9	15.0	29.0
1995-96	54.0	7.1	13.0	34.0
1996-97	56.0	7.1	12.6	36.3
1997-98	54.2	6.7	12.3	35.1
1998-99	54.5	6.7	12.5	35.4
1999-00	54.4	6.8	12.6	35.0
2000-01	53.2	6.9	12.0	34.3
2001-02	53.4	7.0	12.2	34.2

<sup>1</sup> Includes third-strike and other life commitments.

<sup>2</sup> WIP credits based on eligibility.

**G. Placement Need Projections**

The Fall 2002 Projections of institution bed needs, by level, consider both inmate classification score level and administrative determinants, such as institutional security and public safety, as specified in Section 62010 of the California Department of Corrections' Operations Manual. It is assumed that the male felon reception center population will fluctuate proportionately with the changes in male felon intake. Special

housing projections assume a constant proportion of the number of inmates of each classification level in each of these categories over the projection period.

The Fall 2002 Projections do not consider the impact of operational changes such as the need to single-cell Level IV inmates in the Enhanced Outpatient Program (EOP) or the increase in indeterminate Security Housing Unit (SHU) terms. The projections also do not consider the implementation of the proposed Violence Control Program (VCP). Each of these changes in policy or programs could result in a need for additional Level IV and SHU beds.

## **H. Parole Violators**

For the six-month period of January to June 2002, there were 31,978 male felon parole violators returned to custody or pending parole revocation (PV-RTC/PendRev), 1,387 fewer than projected in the Spring 2002 Projections. The corresponding return rate was 51.9 (2.4 lower than projected). The Fall 2002 Projections assume the PV-RTC/PendRev rate will be about two points lower than projected in the Spring Projections.

There were 6,705 male felon PV-WNTs for the same six-month period, 28 more than projected. The corresponding male felon PV-WNT rate was 10.9, only 0.1 lower than projected. The Fall 2002 Projections assume the PV-WNT rate will be about the same as projected in the Spring Projections.

The graphs on the following pages illustrate actual and projected parole return numbers and rates. Figure 5 displays the actual number of male felon parole violator returns by quarter since June 1992. Figure 6 shows the male felon PV-RTC/PendRev rates by quarter from June 1992 to June 2008, while Figure 7 tracks the male felon PV-WNT rates for the same time period.

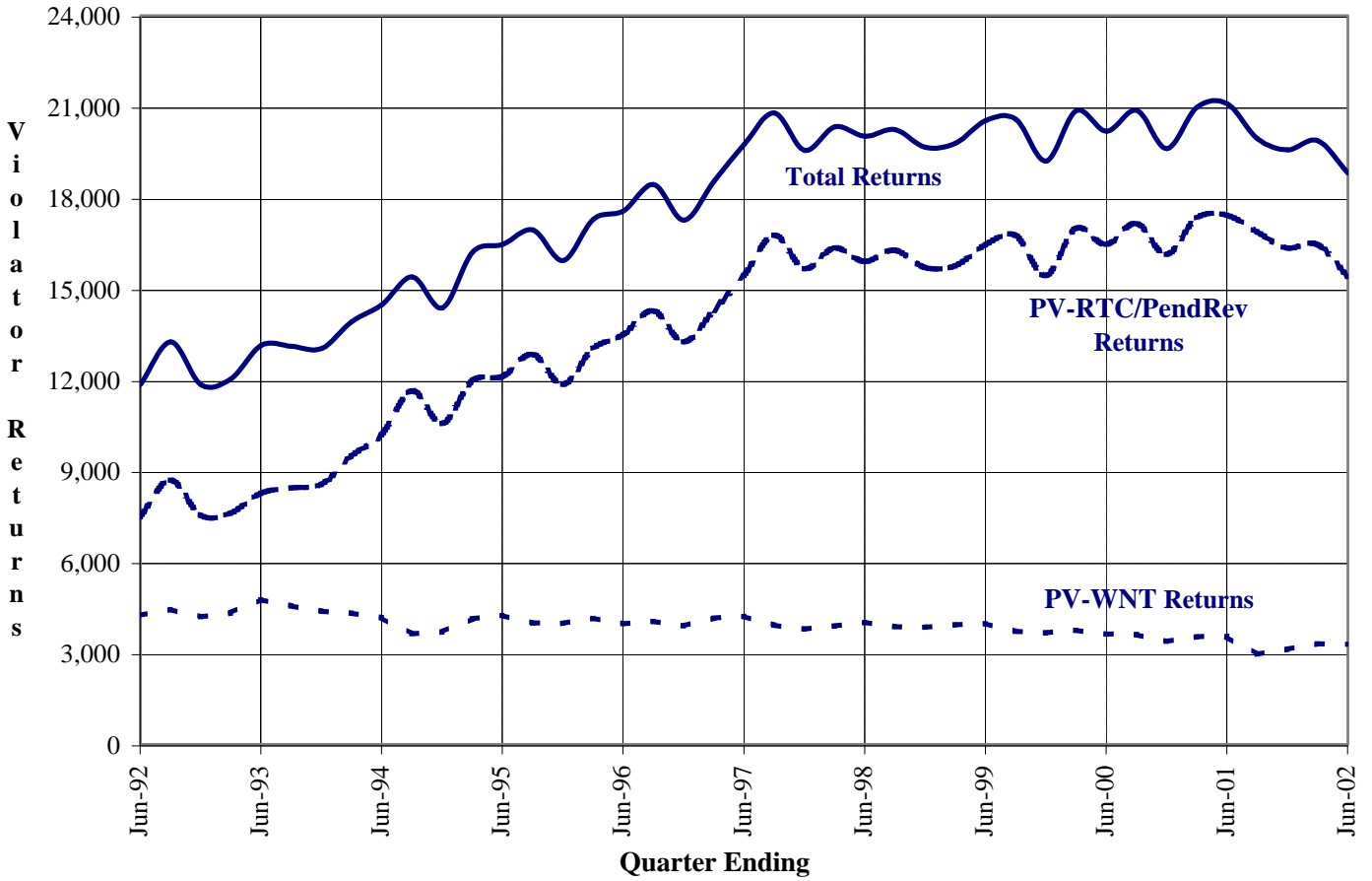
## **I. Felon Parole Population**

On June 30, 2002, the felon parole population was 116,160, which is 418 higher than projected in Spring 2002. Between January and June 2002, this population decreased by 1,515.

For the six-month period of January to June 2002, there were 16,172 male felon parolees suspended to parolee-at-large (PAL) status, 246 fewer than projected in Spring 2002. The PAL rate was 31.0, only 0.5 lower than projected. The Fall 2002 Projections assume that the male felon PAL rate will be about the same as projected in the Spring 2002 Projections.

There were 15,453 male felon parolees discharged from parole over the last six months, only two more than projected in Spring 2002. The discharge rate was 25.2, the same as projected. The Fall 2002 Projections assume that the male felon discharge rate will be about the same as projected in the Spring 2002 Projections.

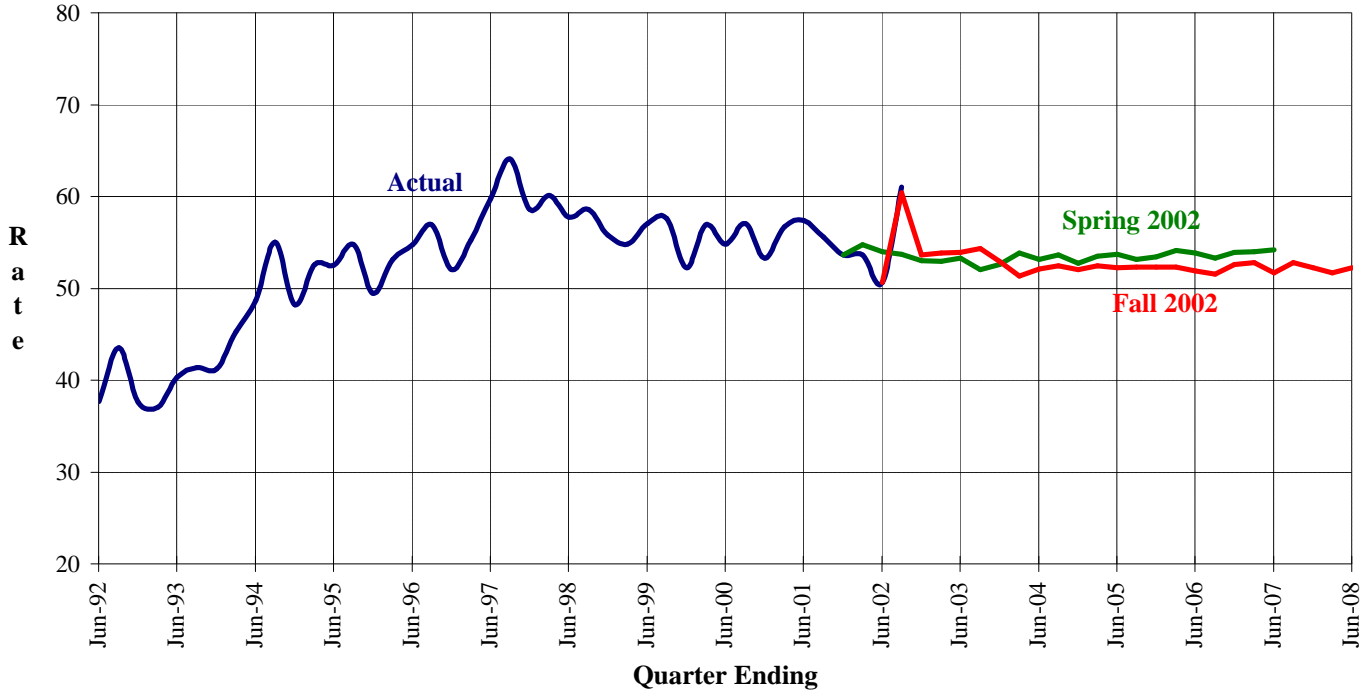
**Figure 5**  
**Male Felon Parole Violator Returns**  
**June 1992 through June 2002**



Note: PV-RTC/PendRevs are parole violators returned to custody or pending revocation.  
 PV-WNTs are parole violators returned with new term.

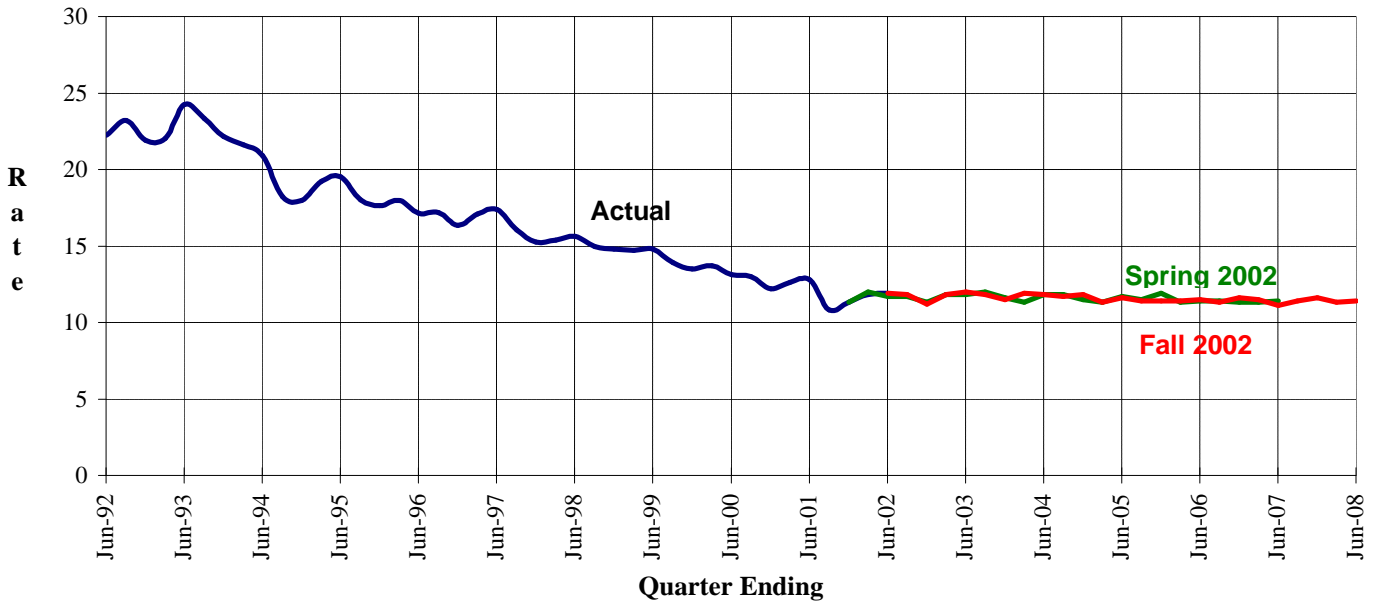


**Figure 6**  
**Male Felon PV-RTC/PendRev Rates**  
**June 1992 through June 2008**



Note: PV-RTC/PendRevs are parole violators returned to custody or pending revocation.

**Figure 7**  
**Male Felon PV-WNT Rates**  
**June 1992 through June 2008**



Note: PV-WNTs are parole violators returned with a new term.

## **III. FALL 2002 POPULATION PROJECTIONS**

---

The Fall 2002 Projections are summarized in Tables 1 and 2 and are presented in greater detail in Tables 3 through 16. Tables 3 and 4 present the quarterly institution populations, while Tables 5 and 6 present detailed projections by inmate placement needs. Tables 7 through 10 project the movement of institution populations (including civil narcotic addicts), and Tables 11 through 16 present detailed projections of the parole and outpatient population.

**J. Six-Year Population Projections**

**Tables 1-2**

**Fiscal Years 2002-03 through 2007-08**

Fall 2002 Projections

Table 1  
 Institution Population  
 June 30, 1993 through June 30, 2008

<u>As of June 30</u>	<u>Total</u>	<u>Total Males</u>	<u>Male Felons</u>	<u>Male Addicts</u>	<u>Male Others</u>	<u>Total Females</u>	<u>Female Felons</u>	<u>Female Addicts</u>	<u>Female Others</u>
Actual									
1993	115,534	108,302	104,768	3,067	467	7,232	6,450	732	50
1994	124,813	116,879	113,238	3,189	452	7,934	7,144	750	40
1995	131,342	122,514	119,063	3,114	337	8,828	8,026	766	36
1996	141,017	131,273	128,497	2,465	311	9,744	8,975	736	33
1997	152,506	141,669	139,239	2,163	267	10,837	10,188	583	66
1998	158,207	147,001	144,805	1,924	272	11,206	10,594	562	50
1999	162,064	150,581	148,621	1,703	257	11,483	10,949	495	39
2000	162,000	150,793	148,754	1,776	263	11,207	10,620	535	52
2001	161,497	150,785	148,853	1,668	264	10,712	10,261	403	48
2002	157,979	148,153	146,455	1,351	347	9,826	9,453	311	62
Projected									
2003	160,661	150,751	149,063	1,342	346	9,910	9,564	284	62
2004	161,039	151,294	149,606	1,342	346	9,745	9,411	272	62
2005	160,940	151,273	149,585	1,342	346	9,667	9,337	267	63
2006	160,675	151,067	149,379	1,342	346	9,608	9,279	265	64
2007	160,578	151,049	149,361	1,342	346	9,529	9,199	265	65
2008	161,199	151,587	149,899	1,342	346	9,612	9,282	264	66

Note: Others include county diagnostic cases, persons from other states, federal prisoners, county safekeepers, and California Youth Authority (CYA) wards.

Fall 2002 Projections

Table 2  
 Parole and Outpatient Population  
 Supervised in California  
 June 30, 1993 through June 30, 2008

<u>As of June 30</u>	<u>Total</u>	<u>Total Males</u>	<u>Male Felons</u>	<u>Male Addicts</u>	<u>Male Others</u>	<u>Total Females</u>	<u>Female Felons</u>	<u>Female Addicts</u>	<u>Female Others</u>
Actual									
1993	83,887	75,735	70,809	2,839	2,087	8,152	7,024	941	187
1994	85,197	77,014	72,057	3,093	1,864	8,183	7,037	980	166
1995	91,456	83,048	78,450	3,346	1,252	8,408	7,325	960	123
1996	98,013	88,710	84,227	3,172	1,311	9,303	8,311	870	122
1997	100,828	91,002	87,202	2,684	1,116	9,826	8,817	880	129
1998	108,750	97,587	94,158	2,313	1,116	11,163	10,256	751	156
1999	112,494	100,716	97,593	1,954	1,169	11,778	10,944	678	156
2000	119,298	106,505	103,453	1,899	1,153	12,793	12,033	603	157
2001	119,636	106,396	103,232	2,011	1,153	13,240	12,396	674	170
2002	120,336	107,136	103,794	2,027	1,315	13,200	12,366	646	188
Projected									
2003	117,233	104,662	101,230	2,010	1,422	12,571	11,777	597	197
2004	115,387	103,234	99,778	2,010	1,446	12,153	11,377	571	205
2005	114,305	102,410	98,948	2,010	1,452	11,895	11,122	559	214
2006	113,888	102,064	98,601	2,010	1,453	11,824	11,049	553	222
2007	113,937	102,062	98,599	2,010	1,453	11,875	11,094	550	231
2008	113,277	101,493	98,030	2,010	1,453	11,784	10,995	549	240

Note: Others include co-ops and other state/federal parolees.

**K. Two-Year Institution Population and Placement Needs Projections**

**Tables 3-10**

**Detail Fiscal Years 2002-03 and 2003-04**

**Fiscal Years 2002-03 through 2007-08 (Tables 5 & 6)**

Fall 2002 Projections

Table 3  
 Institution Population  
 Fiscal Years 2002/03 through 2003/04

	Actual June 30 2002	Sep 30 2002	Dec 31 2002	Mar 31 2003	Jun 30 2003	Sep 30 2003	Dec 31 2003	Mar 31 2004	Jun 30 2004
Total Population	157,979	160,637	159,780	159,844	160,661	160,882	160,620	160,491	161,039
Men (Inc. CCC)	148,153	150,595	149,783	149,977	150,751	151,046	150,860	150,788	151,294
Women (Inc. CCC)	9,826	10,042	9,997	9,867	9,910	9,836	9,760	9,703	9,745
Total (Exc. CCC)	150,350	152,995	152,138	152,202	152,979	153,176	152,914	152,785	153,333
Men	140,973	143,461	142,649	142,843	143,577	143,872	143,686	143,614	144,120
Felons	139,575	142,084	141,261	141,473	142,189	142,498	142,298	142,244	142,732
Civil Narcotic Addicts	1,051	1,045	1,042	1,042	1,042	1,042	1,042	1,042	1,042
Others 1	347	332	346	328	346	332	346	328	346
Women	9,377	9,534	9,489	9,359	9,402	9,304	9,228	9,171	9,213
Felons	9,004	9,177	9,136	9,017	9,056	8,967	8,892	8,843	8,879
Civil Narcotic Addicts	311	302	294	288	284	281	276	273	272
Others 1	62	55	59	54	62	56	60	55	62
Community Correctional Centers 2	7,629	7,642	7,642	7,642	7,682	7,706	7,706	7,706	7,706
Total Males	7,180	7,134	7,134	7,134	7,174	7,174	7,174	7,174	7,174
Male Felons	6,880	6,834	6,834	6,834	6,874	6,874	6,874	6,874	6,874
Male Civil Narcotic Addicts	300	300	300	300	300	300	300	300	300
Female Felons	449	508	508	508	508	532	532	532	532

1 Others include county diagnostic cases, other state/federal prisoners, safekeepers, and CYA wards.

2 Community Correctional Center (CCC) data are based on the bed activation schedules provided by the Parole and Institutions Divisions.

Fall 2002 Projections

Table 4  
 Average Daily Institution Population  
 Fiscal Years 2002/03 through 2003/04

	FY 2002/03 Avg	Sep 30 2002	Dec 31 2002	Mar 31 2003	Jun 30 2003	FY 2003/04 Avg	Sep 30 2003	Dec 31 2003	Mar 31 2004	Jun 30 2004
Total Population	160,029	159,573	160,561	159,635	160,349	160,682	160,733	160,791	160,341	160,864
Men (Inc. CCC)	150,074	149,614	150,510	149,711	150,463	150,905	150,875	151,014	150,625	151,108
Women (Inc. CCC)	9,955	9,960	10,052	9,923	9,885	9,777	9,858	9,777	9,716	9,756
Total (Exc. CCC)	152,421	152,081	152,919	151,993	152,690	152,977	153,031	153,085	152,635	153,158
Men	142,959	142,572	143,376	142,577	143,313	143,731	143,701	143,840	143,451	143,934
Felons	141,574	141,185	141,989	141,192	141,931	142,348	142,319	142,455	142,065	142,552
Civil Narcotic Addicts	1,044	1,048	1,043	1,042	1,042	1,042	1,042	1,042	1,042	1,042
Others 1	341	339	343	344	339	341	339	343	344	339
Women	9,461	9,509	9,544	9,415	9,377	9,246	9,331	9,245	9,184	9,224
Felons	9,108	9,145	9,187	9,066	9,032	8,910	8,990	8,908	8,850	8,892
Civil Narcotic Addicts	296	307	299	291	287	277	282	279	275	273
Others 1	58	57	58	58	59	59	58	59	59	60
Community Correctional Centers 2	7,609	7,492	7,642	7,642	7,659	7,705	7,702	7,706	7,706	7,706
Total Males	7,115	7,041	7,134	7,134	7,151	7,174	7,174	7,174	7,174	7,174
Male Felons	6,815	6,741	6,834	6,834	6,851	6,874	6,874	6,874	6,874	6,874
Male Civil Narcotic Addicts	300	300	300	300	300	300	300	300	300	300
Female Felons	494	451	508	508	508	531	528	532	532	532

1 Others include county diagnostic cases, other state/federal prisoners, safekeepers, and CYA wards.

2 Community Correctional Center (CCC) data are based on the bed activation schedules provided by the Parole and Institutions Divisions.



Fall 2002 Projections

Table 5  
 Projected Placement Needs for Male Felon Institution Population  
 Fiscal Years 2002/03 through 2007/08

<u>Fiscal Year</u>	<u>Fiscal Quarter</u>	<u>Reception Center</u>	<u>Level I</u>	<u>Level II</u>	<u>Level III</u>	<u>Level IV</u>	<u>Special PHU</u>	<u>Housing SHU</u>	<u>Total Housing</u>	<u>Grand Total</u>
2002/03	September 30	22,805	30,883	32,120	35,095	25,110	35	2,870	2,905	148,918
	December 31	20,895	31,190	32,440	35,335	25,300	35	2,900	2,935	148,095
	March 31	21,280	31,087	32,340	35,285	25,375	35	2,905	2,940	148,307
	June 30	21,490	31,228	32,500	35,390	25,500	35	2,920	2,955	149,063
2003/04	September 30	21,145	31,427	32,690	35,515	25,625	35	2,935	2,970	149,372
	December 31	20,615	31,512	32,750	35,585	25,730	35	2,945	2,980	149,172
	March 31	20,435	31,523	32,740	35,610	25,820	35	2,955	2,990	149,118
	June 30	20,770	31,531	32,755	35,645	25,910	35	2,960	2,995	149,606
2004/05	June 30	20,465	31,495	32,635	35,735	26,225	35	2,995	3,030	149,585
2005/06	June 30	20,235	31,344	32,465	35,780	26,495	35	3,025	3,060	149,379
2006/07	June 30	20,055	31,261	32,365	35,865	26,730	35	3,050	3,085	149,361
2007/08	June 30	20,140	31,294	32,390	36,005	26,960	35	3,075	3,110	149,899

Note: These estimates assume that the male reception center population will increase proportionately with the increase in male felon intake.

Fall 2002 Projections

Table 6  
 Projected Placement Needs for Total Male Institution Population  
 Fiscal Years 2002/03 through 2007/08

<u>Fiscal Year</u>	<u>Fiscal Quarter</u>	<u>Reception Center</u>	<u>Level I</u>	<u>Level II</u>	<u>Level III</u>	<u>Level IV</u>	<u>Special PHU</u>	<u>Housing SHU</u>	<u>Total Housing</u>	<u>Grand Total</u>
2002/03	September 30	23,137	30,883	33,465	35,095	25,110	35	2,870	2,905	150,595
	December 31	21,241	31,190	33,782	35,335	25,300	35	2,900	2,935	149,783
	March 31	21,608	31,087	33,682	35,285	25,375	35	2,905	2,940	149,977
	June 30	21,836	31,228	33,842	35,390	25,500	35	2,920	2,955	150,751
2003/04	September 30	21,477	31,427	34,032	35,515	25,625	35	2,935	2,970	151,046
	December 31	20,961	31,512	34,092	35,585	25,730	35	2,945	2,980	150,860
	March 31	20,763	31,523	34,082	35,610	25,820	35	2,955	2,990	150,788
	June 30	21,116	31,531	34,097	35,645	25,910	35	2,960	2,995	151,294
2004/05	June 30	20,811	31,495	33,977	35,735	26,225	35	2,995	3,030	151,273
2005/06	June 30	20,581	31,344	33,807	35,780	26,495	35	3,025	3,060	151,067
2006/07	June 30	20,401	31,261	33,707	35,865	26,730	35	3,050	3,085	151,049
2007/08	June 30	20,486	31,294	33,732	36,005	26,960	35	3,075	3,110	151,587

Note: These estimates assume that the male reception center population will increase proportionately with the increase in male felon intake. Reception Center includes others as defined on Table 1. Level II includes civil narcotic addicts.

**Population Projections Unit  
Estimates and Statistical Analysis Section  
Offender Information Services Branch**

**Department of Corrections  
State of California  
08/28/2002**

**Fall 2002 Projections**

Table 7  
Movement of Male Felon Institution Population  
Fiscal Years 2001/02 through 2003/04

<u>Fiscal Year</u>	<u>Fiscal Quarter</u>		<u>Total Intake</u>	<u>From Court</u>	<u>PV-WNT</u>	<u>PV-RTC</u>	<u>Other Intake</u>	<u>Total Outgo</u>	<u>First Parole</u>	<u>PV-RTC Parole</u>	<u>Other Outgo</u>	<u>Gain/Loss</u>	<u>Population End of Qtr</u>
2001/02	Jul-Sep		27,799	7,823	3,012	16,927	37	29,993	12,484	16,566	943	-2,127	146,726
	Oct-Dec		27,984	8,366	3,175	16,404	39	29,177	12,108	16,131	938	-1,064	145,662
	Jan-Mar		28,490	8,585	3,361	16,514	30	28,273	11,545	15,807	921	-58	145,604
	Apr-Jun		27,705	8,827	3,357	15,493	28	26,918	11,425	14,571	922	851	146,455
	Total		111,978	33,601	12,905	65,338	134	114,361	47,562	63,075	3,724	-2,398	
2002/03	Jul-Sep	*	29,993	8,397	3,301	18,257	38	27,530	11,409	15,652	469	2,463	148,918
	Oct-Dec	*	27,479	8,239	3,104	16,099	37	28,302	11,630	16,090	582	-823	148,095
	Jan-Mar	*	27,982	8,385	3,302	16,257	38	27,770	11,440	15,628	702	212	148,307
	Apr-Jun	*	28,263	8,671	3,324	16,230	38	27,507	11,579	15,141	787	756	149,063
	Total		113,717	33,692	13,031	66,843	151	111,109	46,058	62,511	2,540	2,608	
2003/04	Jul-Sep	*	27,807	8,260	3,252	16,257	38	27,498	11,243	15,430	825	309	149,372
	Oct-Dec	*	27,108	8,116	3,175	15,780	37	27,308	11,336	15,115	857	-200	149,172
	Jan-Mar	*	26,877	8,260	3,276	15,303	38	26,931	11,319	14,842	770	-54	149,118
	Apr-Jun	*	27,315	8,539	3,246	15,492	38	26,827	11,491	14,503	833	488	149,606
	Total		109,107	33,175	12,949	62,832	151	108,564	45,389	59,890	3,285	543	

\* Projected

Note: Other intake includes CYA.  
Other outgo includes discharges and deaths.

Fall 2002 Projections

Table 8  
 Movement of Female Felon Institution Population  
 Fiscal Years 2001/02 through 2003/04

<u>Fiscal Year</u>	<u>Fiscal Quarter</u>		<u>Total Intake</u>	<u>From Court</u>	<u>PV-WNT</u>	<u>PV-RTC</u>	<u>Total Outgo</u>	<u>First Parole</u>	<u>PV-RTC Parole</u>	<u>Other Outgo</u>	<u>Gain/Loss</u>	<u>Population End of Qtr</u>
2001/02	Jul-Sep		2,801	993	229	1,579	3,245	1,530	1,647	68	-438	9,823
	Oct-Dec		2,629	948	281	1,400	3,104	1,527	1,523	54	-448	9,375
	Jan-Mar		2,884	1,030	256	1,598	2,953	1,363	1,519	71	-98	9,277
	Apr-Jun		2,865	1,041	297	1,527	2,674	1,319	1,306	49	176	9,453
	Total		11,179	4,012	1,063	6,104	11,976	5,739	5,995	242	-808	
2002/03	Jul-Sep	*	2,861	1,028	304	1,529	2,629	1,210	1,387	32	232	9,685
	Oct-Dec	*	2,737	986	288	1,463	2,778	1,246	1,480	52	-41	9,644
	Jan-Mar	*	2,739	1,000	279	1,460	2,858	1,310	1,503	45	-119	9,525
	Apr-Jun	*	2,770	1,013	282	1,475	2,731	1,284	1,391	56	39	9,564
	Total		11,107	4,027	1,153	5,927	10,996	5,050	5,761	185	111	
2003/04	Jul-Sep	*	2,708	996	291	1,421	2,773	1,302	1,416	55	-65	9,499
	Oct-Dec	*	2,669	963	272	1,434	2,744	1,286	1,384	74	-75	9,424
	Jan-Mar	*	2,678	978	284	1,416	2,727	1,313	1,342	72	-49	9,375
	Apr-Jun	*	2,645	994	252	1,399	2,609	1,246	1,302	61	36	9,411
	Total		10,700	3,931	1,099	5,670	10,853	5,147	5,444	262	-153	

\* Projected

Note: Other outgo includes discharges and deaths.

Fall 2002 Projections

Table 9  
 Movement of Male Civil Narcotic Addict Institution Population  
 Fiscal Years 2001/02 through 2003/04

<u>Fiscal Year</u>	<u>Fiscal Quarter</u>		<u>Total Intake</u>	<u>From Court</u>	<u>Outpatients Returned</u>	<u>Total Outgo</u>	<u>Outpatient Status</u>	<u>Other Outgo</u>	<u>Gain/Loss</u>	<u>Population End of Qtr</u>
2001/02	Jul-Sep		399	193	206	508	430	78	-85	1,583
	Oct-Dec		384	170	214	504	454	50	-134	1,449
	Jan-Mar		452	226	226	440	384	56	4	1,453
	Apr-Jun		443	199	244	540	473	67	-102	1,351
	Total		1,678	788	890	1,992	1,741	251	-317	
2002/03	Jul-Sep	*	504	255	249	510	460	50	-6	1,345
	Oct-Dec	*	505	254	251	508	465	43	-3	1,342
	Jan-Mar	*	507	255	252	507	468	39	0	1,342
	Apr-Jun	*	507	255	252	507	468	39	0	1,342
	Total		2,023	1,019	1,004	2,032	1,861	171	-9	
2003/04	Jul-Sep	*	507	255	252	507	468	39	0	1,342
	Oct-Dec	*	507	255	252	507	468	39	0	1,342
	Jan-Mar	*	507	255	252	507	468	39	0	1,342
	Apr-Jun	*	507	255	252	507	468	39	0	1,342
	Total		2,028	1,020	1,008	2,028	1,872	156	0	

\* Projected

Note: Other outgo includes discharges and deaths.

Fall 2002 Projections

Table 10  
 Movement of Female Civil Narcotic Addict Institution Population  
 Fiscal Years 2001/02 through 2003/04

<u>Fiscal Year</u>	<u>Fiscal Quarter</u>		<u>Total Intake</u>	<u>From Court</u>	<u>Outpatients Returned</u>	<u>Total Outgo</u>	<u>Outpatient Status</u>	<u>Other Outgo</u>	<u>Gain/Loss</u>	<u>Population End of Qtr</u>
2001/02	Jul-Sep		79	49	30	134	126	8	-47	356
	Oct-Dec		89	52	37	115	108	7	-28	328
	Jan-Mar		98	52	46	86	78	8	7	334
	Apr-Jun		106	69	37	117	110	7	-24	311
	Total		372	222	150	452	422	30	-92	
2002/03	Jul-Sep	*	93	43	50	102	73	29	-9	302
	Oct-Dec	*	92	40	52	100	66	34	-8	294
	Jan-Mar	*	90	41	49	96	67	29	-6	288
	Apr-Jun	*	92	42	50	96	69	27	-4	284
	Total		367	166	201	394	275	119	-27	
2003/04	Jul-Sep	*	93	43	50	96	71	25	-3	281
	Oct-Dec	*	89	40	49	94	66	28	-5	276
	Jan-Mar	*	87	40	47	90	68	22	-3	273
	Apr-Jun	*	89	41	48	90	73	17	-1	272
	Total		358	164	194	370	278	92	-12	

\* Projected

Note: Other outgo includes discharges and deaths.

**L. Two-Year Parole and Outpatient Population Projections**

**Tables 11-16**

**Detail Fiscal Years 2002-03 and 2003-04**

Fall 2002 Projections

Table 11  
 California Supervised Parole and Outpatient Population  
 Fiscal Years 2002/03 through 2003/04

	Actual June 30 2002	Sep 30 2002	Dec 31 2002	Mar 31 2003	Jun 30 2003	Sep 30 2003	Dec 31 2003	Mar 31 2004	Jun 30 2004
Total Men and Women	120,336	117,553	118,113	118,221	117,233	116,642	116,158	116,098	115,387
Felons	116,160	113,356	113,906	114,006	113,007	112,413	111,929	111,872	111,155
Outpatients	2,673	2,650	2,629	2,616	2,607	2,600	2,591	2,584	2,581
Others 1	1,503	1,547	1,578	1,599	1,619	1,629	1,638	1,642	1,651
Total Men	107,136	104,784	105,478	105,540	104,662	104,161	103,770	103,857	103,234
Felons	103,794	101,412	102,082	102,126	101,230	100,721	100,323	100,408	99,778
Outpatients	2,027	2,015	2,010	2,010	2,010	2,010	2,010	2,010	2,010
Others 1	1,315	1,357	1,386	1,404	1,422	1,430	1,437	1,439	1,446
Total Women	13,200	12,769	12,635	12,681	12,571	12,481	12,388	12,241	12,153
Felons	12,366	11,944	11,824	11,880	11,777	11,692	11,606	11,464	11,377
Outpatients	646	635	619	606	597	590	581	574	571
Others 1	188	190	192	195	197	199	201	203	205

1 Others include co-ops and other state/federal parolees.



Fall 2002 Projections

Table 12  
 Average Daily Parole and Outpatient Population  
 Fiscal Years 2002/03 through 2003/04

	FY 2002/03 Avg	Sep 30 2002	Dec 31 2002	Mar 31 2003	Jun 30 2003	FY 2003/04 Avg	Sep 30 2003	Dec 31 2003	Mar 31 2004	Jun 30 2004
Total Men and Women	118,002	118,571	117,442	118,373	117,622	116,321	117,005	116,426	116,180	115,674
Felons	113,797	114,384	113,240	114,161	113,401	112,093	112,781	112,198	111,951	111,443
Outpatients	2,634	2,663	2,639	2,623	2,612	2,593	2,603	2,595	2,589	2,584
Others 1	1,571	1,524	1,563	1,589	1,609	1,636	1,622	1,633	1,640	1,647
Total Men	105,279	105,638	104,786	105,695	104,996	103,965	104,450	103,978	103,885	103,545
Felons	101,887	102,283	101,403	102,290	101,573	100,520	101,016	100,535	100,437	100,093
Outpatients	2,013	2,020	2,012	2,010	2,010	2,010	2,010	2,010	2,010	2,010
Others 1	1,379	1,335	1,371	1,395	1,413	1,434	1,424	1,433	1,438	1,442
Total Women	12,723	12,933	12,656	12,678	12,625	12,357	12,555	12,448	12,295	12,129
Felons	11,909	12,100	11,838	11,871	11,827	11,573	11,765	11,662	11,514	11,350
Outpatients	621	643	627	613	602	583	593	585	579	574
Others 1	193	190	192	194	196	201	198	200	202	205

1 Others include co-ops and other state/federal parolees.

**Population Projections Unit  
Estimates and Statistical Analysis Section  
Offender Information Services Branch**

**Department of Corrections  
State of California  
08/28/2002**

**Fall 2002 Projections**

Table 13  
Movement of Male Felon Parole Population  
Fiscal Years 2001/02 through 2003/04

<u>Fiscal Year</u>	<u>Fiscal Quarter</u>		<u>Total Intake</u>	<u>Paroled</u>	<u>Reinstated</u>	<u>Other Intake</u>	<u>Total Outgo</u>	<u>PV-WNT</u>	<u>PV-RTC</u>	<u>PALS</u>	<u>Other Outgo</u>	<u>Gain/Loss</u>	<u>Population End of Qtr</u>
2001/02	Jul-Sep		34,951	29,005	5,665	281	33,852	2,889	15,008	7,778	8,177	1,143	104,375
	Oct-Dec		34,421	28,203	5,944	274	33,859	3,045	14,502	8,472	7,840	518	104,893
	Jan-Mar		33,528	27,325	5,918	285	33,621	3,247	14,612	7,837	7,925	-37	104,856
	Apr-Jun		32,304	25,962	6,108	234	33,498	3,218	13,701	8,334	8,245	-1,062	103,794
	Total		135,204	110,495	23,635	1,074	134,830	12,399	57,823	32,421	32,187	562	
2002/03	Jul-Sep	*	33,665	27,061	6,391	213	36,047	3,159	16,199	8,655	8,034	-2,382	101,412
	Oct-Dec	*	33,973	27,720	5,985	268	33,303	2,989	14,250	8,206	7,858	670	102,082
	Jan-Mar	*	33,317	27,068	5,969	280	33,273	3,166	14,358	7,870	7,879	44	102,126
	Apr-Jun	*	32,710	26,720	5,718	272	33,606	3,181	14,282	7,985	8,158	-896	101,230
	Total		133,665	108,569	24,063	1,033	136,229	12,495	59,089	32,716	31,929	-2,564	
2003/04	Jul-Sep	*	32,965	26,673	6,014	278	33,474	3,131	14,299	7,982	8,062	-509	100,721
	Oct-Dec	*	32,503	26,451	5,779	273	32,901	3,048	13,921	7,993	7,939	-398	100,323
	Jan-Mar	*	32,392	26,161	5,947	284	32,307	3,133	13,449	7,772	7,953	85	100,408
	Apr-Jun	*	32,034	25,994	5,764	276	32,664	3,120	13,652	7,809	8,083	-630	99,778
	Total		129,894	105,279	23,504	1,111	131,346	12,432	55,321	31,556	32,037	-1,452	

\* Projected

Note: Other intake includes transfers direct from court, interstate parole unit (ISPU), and co-ops.  
PALS are parolees-at-large with warrant issued (absconded from parole supervision).  
Other outgo includes transfers to ISPU, discharges and deaths.

Fall 2002 Projections

Table 14  
Movement of Female Felon Parole Population  
Fiscal Years 2001/02 through 2003/04

<u>Fiscal Year</u>	<u>Fiscal Quarter</u>		<u>Total Intake</u>	<u>Paroled</u>	<u>Reinstated</u>	<u>Other Intake</u>	<u>Total Outgo</u>	<u>PV-WNT</u>	<u>PV-RTC</u>	<u>PALS</u>	<u>Other Outgo</u>	<u>Gain/Loss</u>	<u>Population End of Qtr</u>
2001/02	Jul-Sep		4,040	3,175	815	50	3,751	216	1,382	1,019	1,134	284	12,680
	Oct-Dec		3,923	3,040	844	39	3,823	264	1,215	1,204	1,140	102	12,782
	Jan-Mar		3,765	2,880	855	30	3,795	248	1,414	993	1,140	-32	12,750
	Apr-Jun		3,501	2,622	846	33	3,902	284	1,356	1,065	1,197	-384	12,366
	Total		15,229	11,717	3,360	152	15,271	1,012	5,367	4,281	4,611	-30	
2002/03	Jul-Sep	*	3,472	2,597	846	29	3,894	287	1,350	1,119	1,138	-422	11,944
	Oct-Dec	*	3,566	2,726	801	39	3,686	268	1,278	1,047	1,093	-120	11,824
	Jan-Mar	*	3,707	2,813	855	39	3,651	266	1,288	1,037	1,060	56	11,880
	Apr-Jun	*	3,565	2,675	851	39	3,668	264	1,284	1,065	1,055	-103	11,777
	Total		14,310	10,811	3,353	146	14,899	1,085	5,200	4,268	4,346	-589	
2003/04	Jul-Sep	*	3,616	2,718	859	39	3,701	265	1,238	1,102	1,096	-85	11,692
	Oct-Dec	*	3,516	2,670	807	39	3,602	257	1,251	1,016	1,078	-86	11,606
	Jan-Mar	*	3,533	2,655	839	39	3,675	254	1,247	1,075	1,099	-142	11,464
	Apr-Jun	*	3,466	2,548	879	39	3,553	232	1,219	1,071	1,031	-87	11,377
	Total		14,131	10,591	3,384	156	14,531	1,008	4,955	4,264	4,304	-400	

\* Projected

Note: Other intake includes transfers direct from court, interstate parole unit (ISPU), and co-ops.  
PALS are parolees-at-large with warrant issued (absconded from parole supervision).  
Other outgo includes transfers to ISPU, discharges and deaths.

Fall 2002 Projections

Table 15  
 Movement of Male Civil Narcotic Addict Outpatient Population  
 Fiscal Years 2001/02 through 2003/04

<u>Fiscal Year</u>	<u>Fiscal Quarter</u>	<u>Total Intake</u>	<u>Released from Institution</u>	<u>Reinstated</u>	<u>Total Outgo</u>	<u>PV-WNT</u>	<u>PV-RTC</u>	<u>RALS</u>	<u>Other Outgo</u>	<u>Gain/Loss</u>	<u>Population End of Qtr</u>
2001/02	Jul-Sep	468	430	38	431	4	190	86	151	37	2,048
	Oct-Dec	502	454	48	528	7	196	93	232	-25	2,023
	Jan-Mar	438	384	54	465	5	208	62	190	-30	1,993
	Apr-Jun	534	473	61	500	2	223	90	185	34	2,027
Total		1,942	1,741	201	1,924	18	817	331	758	16	
2002/03	Jul-Sep *	529	460	69	541	6	201	111	223	-12	2,015
	Oct-Dec *	534	465	69	539	6	203	113	217	-5	2,010
	Jan-Mar *	537	468	69	537	6	204	114	213	0	2,010
	Apr-Jun *	537	468	69	537	6	204	114	213	0	2,010
Total		2,137	1,861	276	2,154	24	812	452	866	-17	
2003/04	Jul-Sep *	537	468	69	537	6	204	114	213	0	2,010
	Oct-Dec *	537	468	69	537	6	204	114	213	0	2,010
	Jan-Mar *	537	468	69	537	6	204	114	213	0	2,010
	Apr-Jun *	537	468	69	537	6	204	114	213	0	2,010
Total		2,148	1,872	276	2,148	24	816	456	852	0	

\* Projected

Note: RALS are releasees-at-large with warrant issued (absconded from outpatient supervision).  
 Other outgo includes discharges and deaths.

Fall 2002 Projections

Table 16  
 Movement of Female Civil Narcotic Addict Outpatient Population  
 Fiscal Years 2001/02 through 2003/04

<u>Fiscal Year</u>	<u>Fiscal Quarter</u>		<u>Total Intake</u>	<u>Released from Institution</u>	<u>Reinstated</u>	<u>Total Outgo</u>	<u>PV-WNT</u>	<u>PV-RTC</u>	<u>RALS</u>	<u>Other Outgo</u>	<u>Gain/Loss</u>	<u>Population End of Qtr</u>
2001/02	Jul-Sep		134	126	8	98	0	27	12	59	32	706
	Oct-Dec		119	108	11	108	0	34	16	58	10	716
	Jan-Mar		88	78	10	129	0	41	11	77	-38	678
	Apr-Jun		120	110	10	154	1	36	22	95	-32	646
	Total		461	422	39	489	1	138	61	289	-28	
2002/03	Jul-Sep	*	85	73	12	96	0	50	12	34	-11	635
	Oct-Dec	*	78	66	12	94	0	52	10	32	-16	619
	Jan-Mar	*	79	67	12	92	0	49	11	32	-13	606
	Apr-Jun	*	81	69	12	90	0	50	11	29	-9	597
	Total		323	275	48	372	0	201	44	127	-49	
2003/04	Jul-Sep	*	83	71	12	90	0	50	11	29	-7	590
	Oct-Dec	*	78	66	12	87	0	49	11	27	-9	581
	Jan-Mar	*	80	68	12	87	0	47	12	28	-7	574
	Apr-Jun	*	84	73	11	87	0	48	10	29	-3	571
	Total		325	278	47	351	0	194	44	113	-26	

\* Projected

Note: RALS are releasees-at-large with warrant issued (absconded from outpatient supervision).  
 Other outgo includes discharges and deaths.

**M. Addendum**

**Placement Needs of Male Felon Institution Population**

**Placement Needs of Male Felon Institution Population  
June 30, 1998 through June 30, 2008**

**Population Share By Level**

<u>June 30</u>	<u>Reception Center</u>	<u>Level I</u>	<u>Level II</u>	<u>Level III</u>	<u>Level IV</u>	<u>PHU</u>	<u>SHU</u>	<u>Total</u>	<u>Population</u>
<b>Actual</b>									
<b>1998</b>	14.5%	23.1%	21.2%	23.9%	15.6%	0.03%	1.7%	100%	144,805
<b>1999</b>	14.7%	23.9%	20.9%	23.1%	15.7%	0.02%	1.6%	100%	148,623
<b>2000</b>	14.4%	23.0%	21.7%	22.6%	16.6%	0.02%	1.7%	100%	148,754
<b>2001</b>	14.2%	22.5%	21.3%	22.8%	17.1%	0.02%	2.0%	100%	148,853
<b>2002</b>	14.1%	21.0%	21.8%	24.0%	17.1%	0.02%	2.0%	100%	146,455
<b>Projected - Spring 2002</b>									
<b>2002</b>	14.6%	21.0%	21.5%	23.4%	17.5%	0.02%	2.0%	100%	146,464
<b>2003</b>	14.5%	20.7%	21.3%	23.5%	17.9%	0.02%	2.0%	100%	146,032
<b>2004</b>	14.1%	20.6%	21.2%	23.7%	18.3%	0.02%	2.1%	100%	146,730
<b>2005</b>	13.8%	20.6%	21.3%	23.7%	18.4%	0.02%	2.1%	100%	148,731
<b>2006</b>	13.5%	20.8%	21.4%	23.8%	18.5%	0.02%	2.1%	100%	151,525
<b>2007</b>	13.1%	20.9%	21.5%	23.8%	18.5%	0.02%	2.1%	100%	154,786
<b>Projected - Fall 2002</b>									
<b>2003</b>	14.4%	20.9%	21.8%	23.7%	17.1%	0.02%	2.0%	100%	149,063
<b>2004</b>	13.9%	21.1%	21.9%	23.8%	17.3%	0.02%	2.0%	100%	149,606
<b>2005</b>	13.7%	21.1%	21.8%	23.9%	17.5%	0.02%	2.0%	100%	149,585
<b>2006</b>	13.5%	21.0%	21.7%	24.0%	17.7%	0.02%	2.0%	100%	149,379
<b>2007</b>	13.4%	20.9%	21.7%	24.0%	17.9%	0.02%	2.0%	100%	149,361
<b>2008</b>	13.4%	20.9%	21.6%	24.0%	18.0%	0.02%	2.1%	100%	149,899

The male felon institution population is projected by classification level based on placement needs, which consider both inmate classification score level and administrative determinants, such as institutional security and public safety. The above table shows this distribution by level as a share of the total male felon institution population. The first section shows the actual distribution from June 30, 1998 through June 30, 2002; the second section shows the projected distribution in the Spring 2002 Projections and the third section shows the projected distribution in the Fall 2002 Projections. For example, Reception Center (RC) population was 14.5 percent of the total population in 1998 and decreased to 14.1 percent in 2002. In the Spring 2002 Projection, the RC population was projected to be 14.6 percent of the population on June 30, 2002, 0.5 percent higher than the actual share, then decreases to 13.1 percent in 2007 due to declining admissions. In the Fall 2002 Projection, the RC population is projected to be 14.4 percent on June 30, 2003, due to the increased admissions and returns to custody from parole in the current fiscal year. It is then projected to decrease to 13.4 percent in 2008 due to declining admissions and a decrease in returns to custody from parole.